

BUILDING 4400 - SUITE 200 - SPEC LAB SUITE

~12,849 RSF

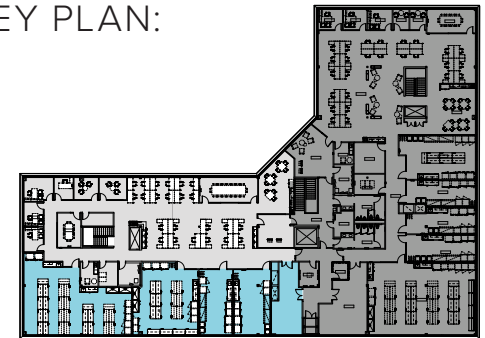


office lab spec lab

SITE PLAN:



KEY PLAN:



LAB PORTION

- Single Pass Air
- 24 Lab Benches
- (3) Lab Support Rooms
- (2) 6 ft Fume Hood
- (4) Combination Emergency Shower and Eyewash Stations
- 1 Warehouse/ 1 Equipment Room
- 1 Shipping and Receiving/ Storage Plug & Play / Benching

OFFICE PORTION

- 4 Private Offices
- 2 Huddle Rooms
- 1 Conference Room
- 16-person Board Room
- 1 Mother/Wellness Room

- 2 Electrical Rooms
- 1 IT/Server Room
- Break Room with Appliances
- Reception Area
- *Hypothetical furniture plan*

BEN PAUL | Vice Chairman | +1 650 401 2123 | ben.paul@cushwake.com | LIC #0121087

GARY BOITANO | Managing Director | +1 650 401 2122 | gary.boitano@cushwake.com | LIC #01902693

DAVID HIEBERT | Vice Chairman | +1 650 320 0250 | david.hiebert@cushwake.com | LIC #01189320