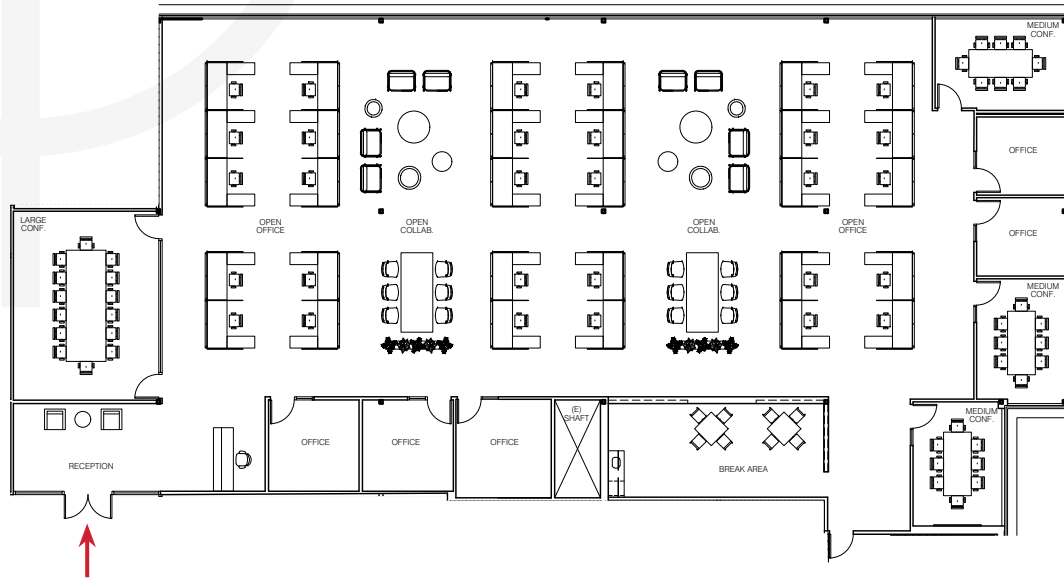


BUILDING 4300 - SUITE 200

~9,307 RSF



SUITE HIGHLIGHTS

5 Private Offices

2 Conference Rooms

Break Area

Collaboration Area

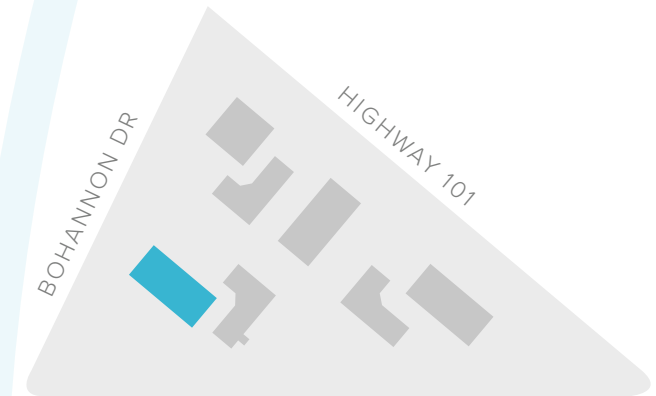
Print Area

Reception Area

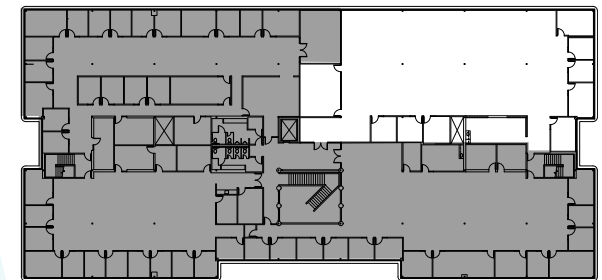
Large Open Office

TOTAL HEAD COUNT: 37

SITE PLAN:



KEY PLAN:



BEN PAUL | Vice Chairman | +1 650 401 2123 | ben.paul@cushwake.com | LIC #0121087

GARY BOITANO | Managing Director | +1 650 401 2122 | gary.boitano@cushwake.com | LIC #01902693

DAVID HIEBERT | Vice Chairman | +1 650 320 0250 | david.hiebert@cushwake.com | LIC #01189320