

**±1,207 to ±62,320 SF of
Office Space Available**



WWW.805VETERANS.COM

Only Office Building of its Kind in RWC

CONTACT US

Chris Blom | Executive Vice President | +1 650 480 2057 | chris.blom@jll.com | LIC #02031205
Ben Paul | Vice Chairman | +1 650 401 2123 | ben.paul@cushwake.com | LIC #01210872





WWW.805VETERANS.COM

PROPERTY HIGHLIGHTS

- Full Floors Available with Expansion Options
- Veterans Blvd Signage Available
- Directly Across from SMC Government Center, Courthouse & RWC Town Hall
- Short Walk to CalTrain, Restaurants & Coffee Shops
- Surrounded by Nearly 4 Acres of Landscaped Open Space and 100's of Free Ground-Level Parking Spaces
- Easy Access to Hwy 101 & 20 Minute Drive to SFO
- On-Site Shared Conference Room
- On-Site Management, Maintenance, Construction, Data Wiring & Janitorial
- Simple Lease Form
- M2M Tenancy Possible



BLOCKS FROM DOWNTOWN REDWOOD CITY



ABUNDANCE OF RESTAURANTS & AMENITIES



COURTHOUSE SQUARE IN DOWNTOWN REDWOOD CITY

CONTACT US

Chris Blom | Executive Vice President | +1 650 480 2057 | chris.blom@jll.com | LIC #02031205

Ben Paul | Vice Chairman | +1 650 401 2123 | ben.paul@cushwake.com | LIC #01210872





Click on Suite # to View Floor Plan

FIRST FLOOR / ±27,209 SF Available

SUITE #	SF	AVAILABILITY	VIRTUAL TOUR
100	±7,224	Now	-
101	±3,897	Now	-
102	±5,720	Now	-
103	±4,035	Now	-
105	±3,227	Now	-
109	±3,106	Now	-

SECOND FLOOR / ±5,559 SF Available

SUITE #	SF	AVAILABILITY	
202	±4,352	Now	-
230	±1,207	Now	360°

THIRD FLOOR / ± 29,552 SF Available

SUITE #	SF	AVAILABILITY	
300	±6,406	Now	360°
320	±5,934	Now	-
300 + 320	±12,340	Now	-
301	±1,703	Now	-
303	±2,473	Now	-
305	±3,290	Now	-
307	±7,785	Now	-
309	±1,961	Now	360°



CONTACT US

Chris Blom | Executive Vice President | +1 650 480 2057 | chris.blom@jll.com | LIC #02031205

Ben Paul | Vice Chairman | +1 650 401 2123 | ben.paul@cushwake.com | LIC #01210872



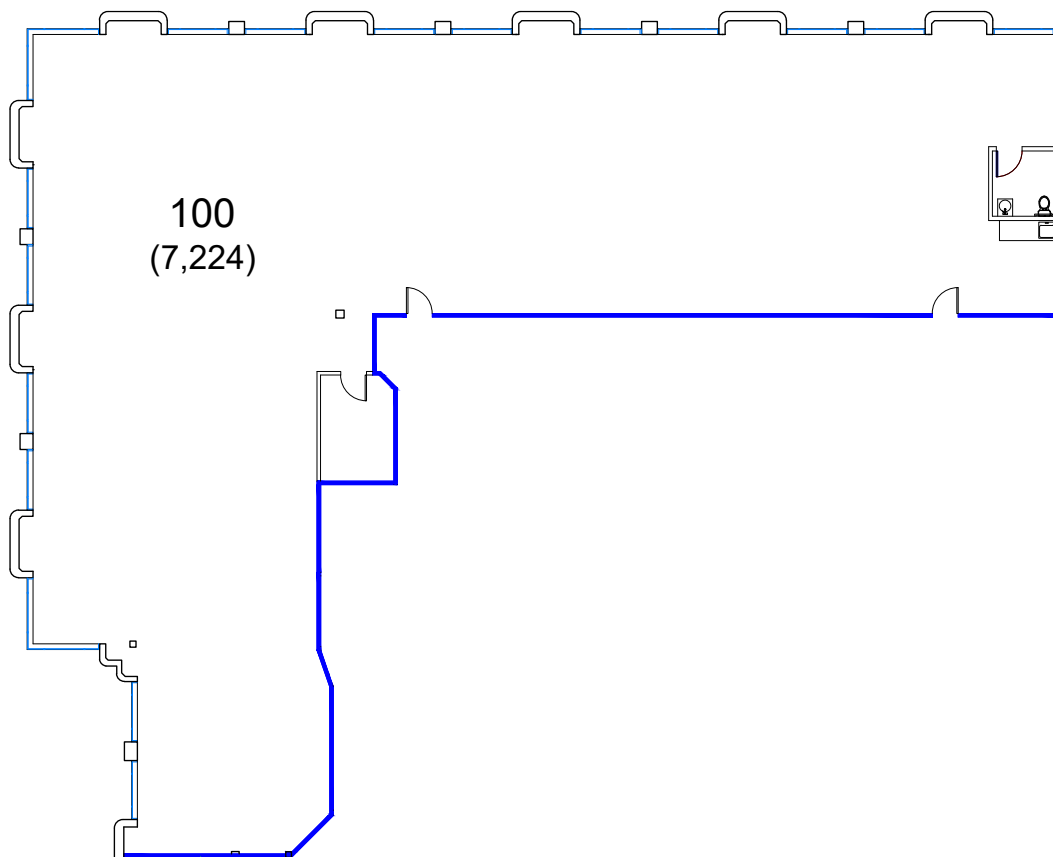
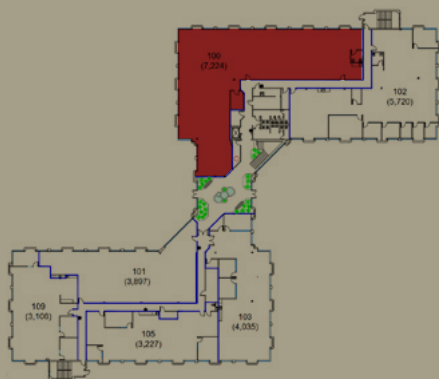


1st Floor

Suite 100 / $\pm 7,224$ SF

- Private Office
- Restroom
- Large Open Space
- Extensive In-Ground Plumbing
- Available Now

KEY PLAN



CONTACT US

Chris Blom | Executive Vice President | +1 650 480 2057 | chris.blom@jll.com | LIC #02031205
Ben Paul | Vice Chairman | +1 650 401 2123 | ben.paul@cushwake.com | LIC #01210872

[BACK TO AVAILABILITIES](#)



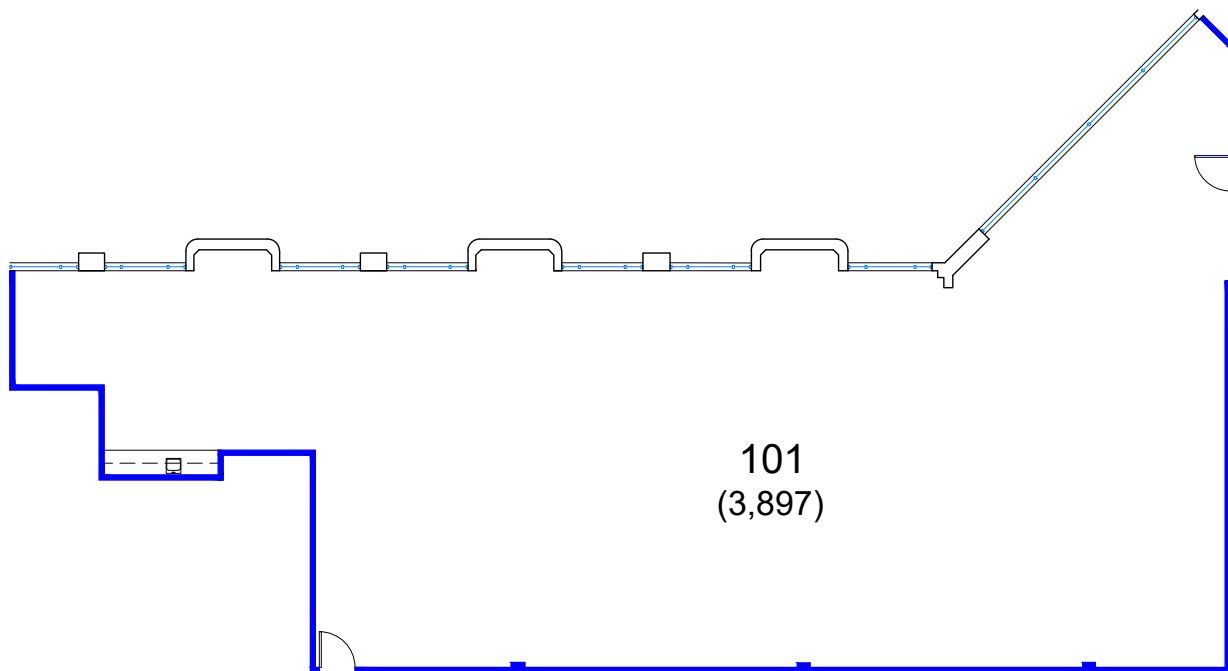
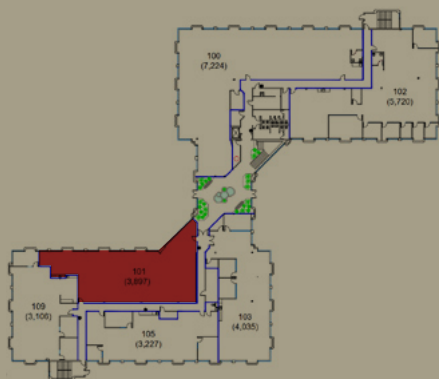


1st Floor

Suite 101 / \pm 3,897 SF

- Break Area
- Large Open Space
- Extensive In-Ground Plumbing
- Available Now

KEY PLAN



CONTACT US

Chris Blom | Executive Vice President | +1 650 480 2057 | chris.blom@jll.com | LIC #02031205
Ben Paul | Vice Chairman | +1 650 401 2123 | ben.paul@cushwake.com | LIC #01210872

[BACK TO AVAILABILITIES](#)



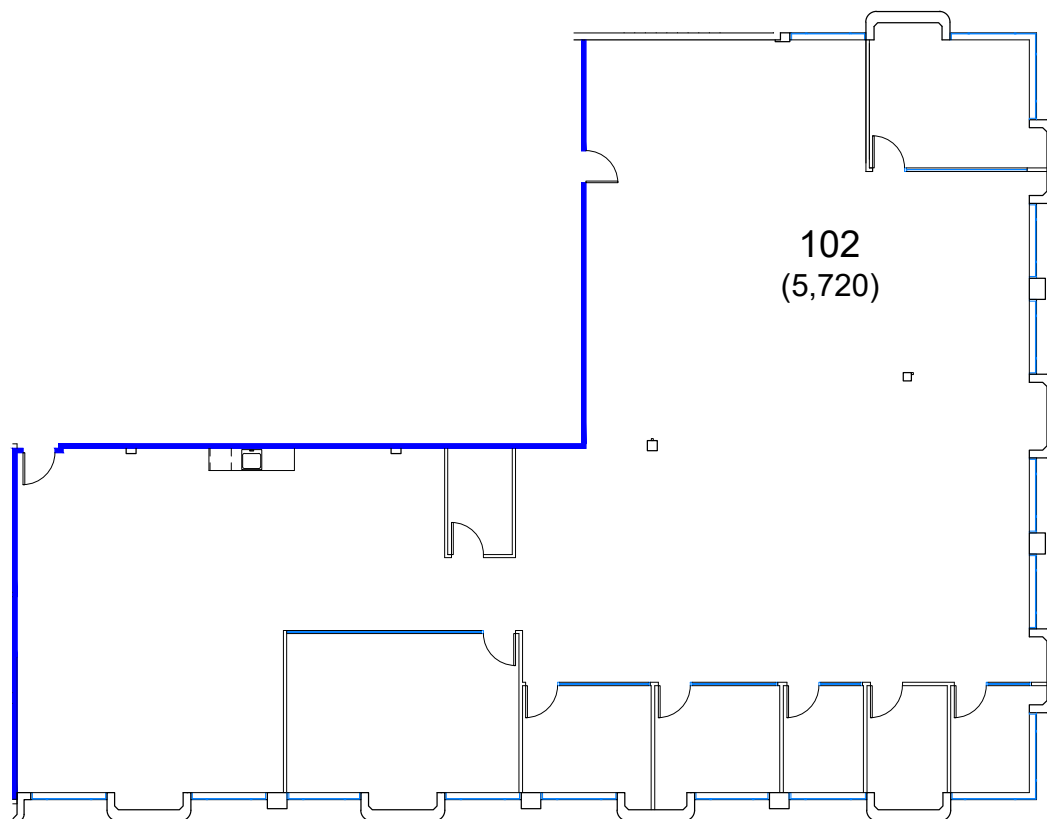
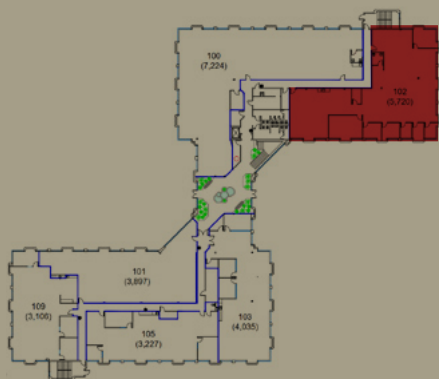


1st Floor

Suite 102 / ±5,720 SF

- Break Area
- Large Open Space
- Available Now

KEY PLAN



CONTACT US

Chris Blom | Executive Vice President | +1 650 480 2057 | chris.blom@jll.com | LIC #02031205
Ben Paul | Vice Chairman | +1 650 401 2123 | ben.paul@cushwake.com | LIC #01210872

[BACK TO AVAILABILITIES](#)



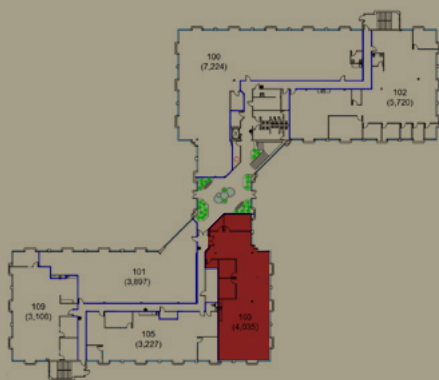


1st Floor

Suite 103 / ±4,035 SF

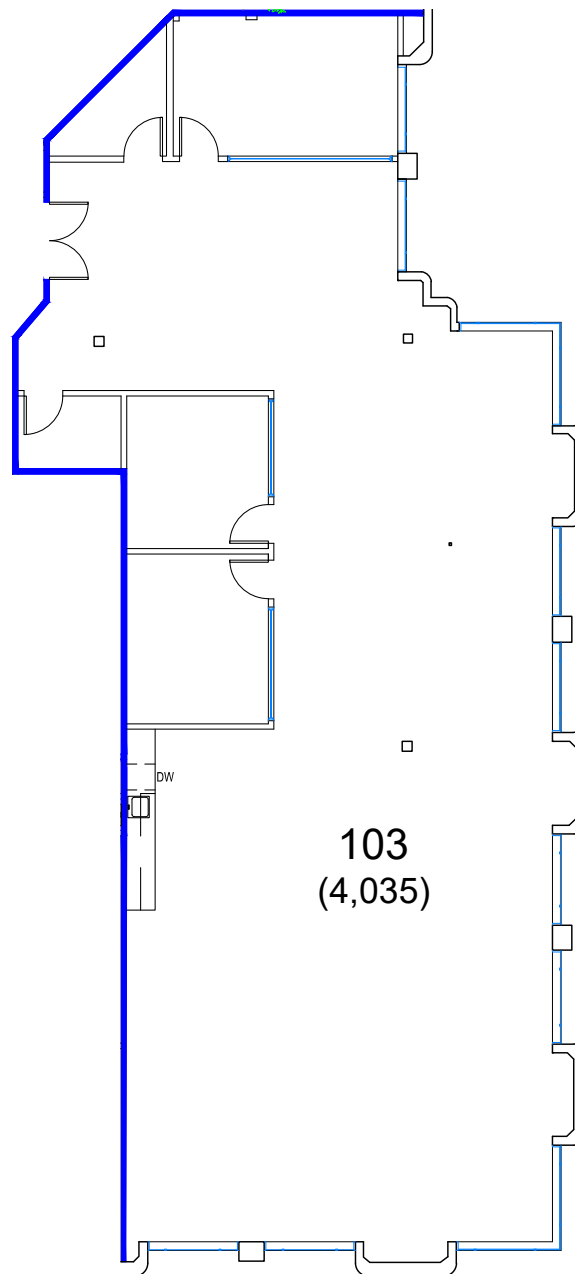
- 2 Private Offices
- Conference Room
- 2 Phone Rooms
- Break Area
- Large Open Space
- Available Now

KEY PLAN



CONTACT US

Chris Blom | Executive Vice President | +1 650 480 2057 | chris.blom@jll.com | LIC #02031205
Ben Paul | Vice Chairman | +1 650 401 2123 | ben.paul@cushwake.com | LIC #01210872



[BACK TO AVAILABILITIES](#)



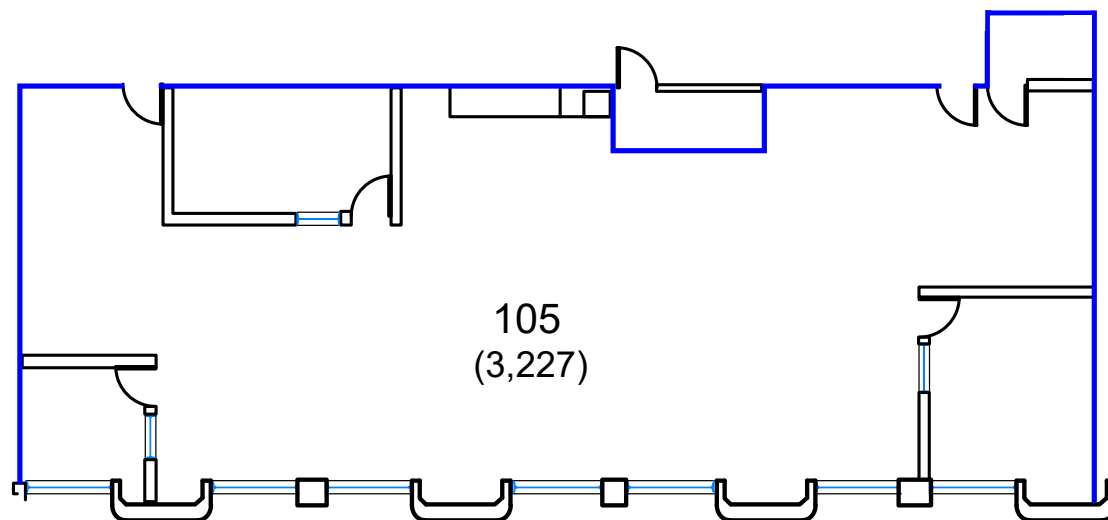
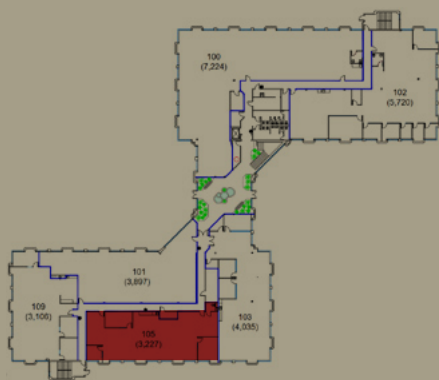


1st Floor

Suite 105 / \pm 3,227 SF

- 2 Conference Rooms
- 1 Private Office
- Storage
- Kitchen
- Fully Furnished
- Available Now

KEY PLAN



CONTACT US

Chris Blom | Executive Vice President | +1 650 480 2057 | chris.blom@jll.com | LIC #02031205
Ben Paul | Vice Chairman | +1 650 401 2123 | ben.paul@cushwake.com | LIC #01210872

[BACK TO AVAILABILITIES](#)



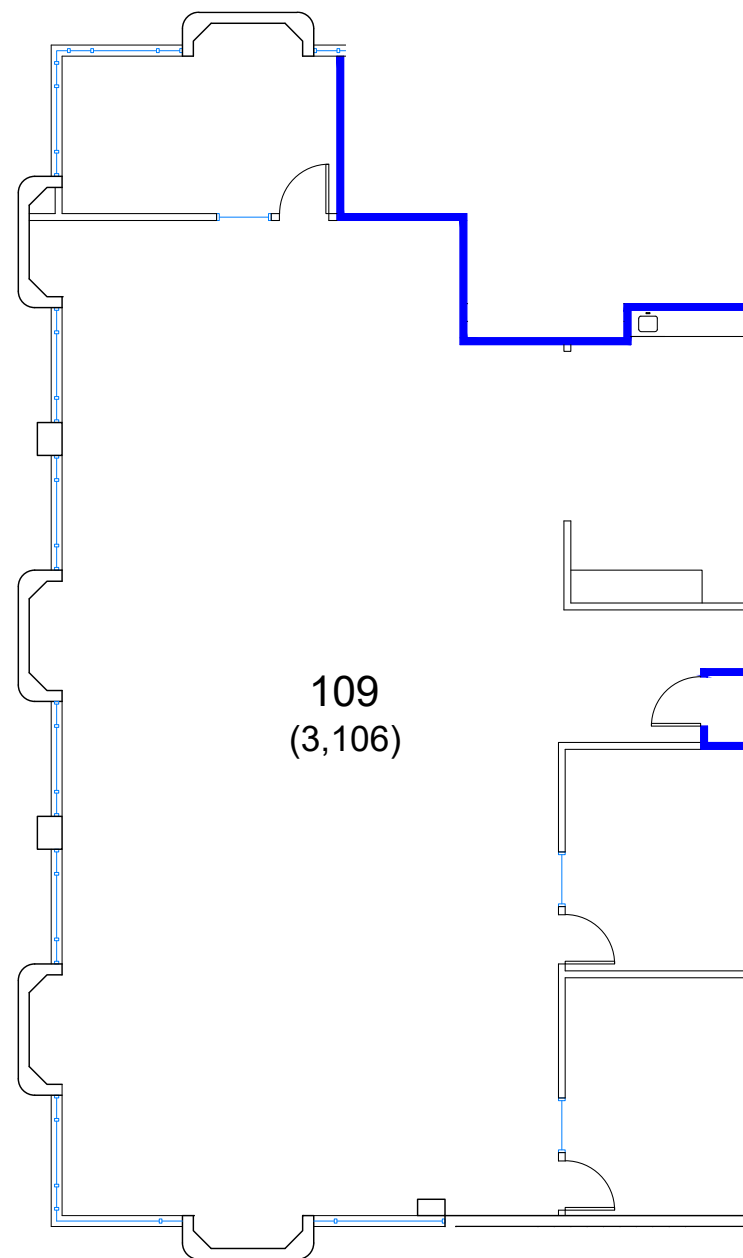
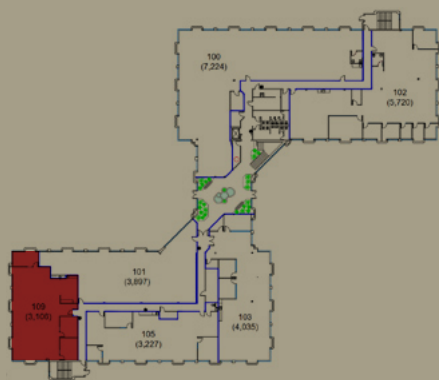


1st Floor

Suite 109 / \pm 3,106 SF

- 1 Conference Room
- 2 Private Offices
- Kitchenette

KEY PLAN



CONTACT US

Chris Blom | Executive Vice President | +1 650 480 2057 | chris.blom@jll.com | LIC #02031205
Ben Paul | Vice Chairman | +1 650 401 2123 | ben.paul@cushwake.com | LIC #01210872

[BACK TO AVAILABILITIES](#)



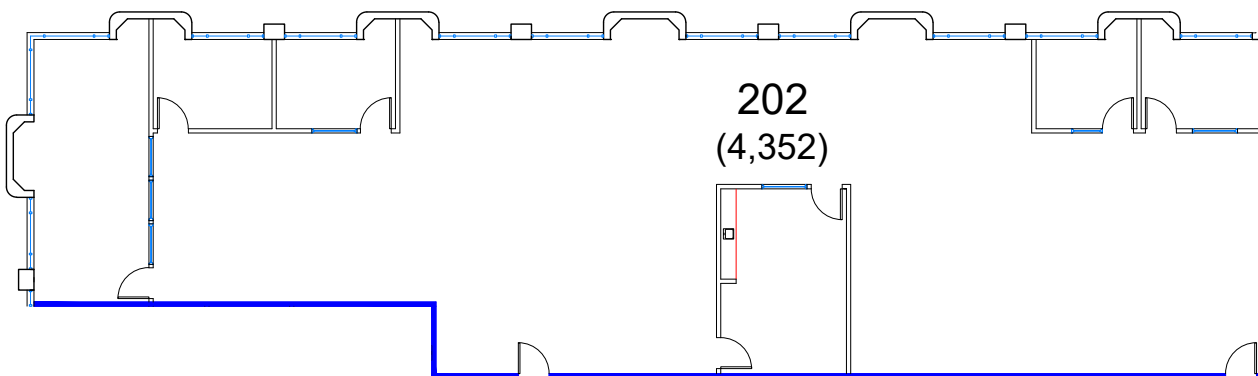
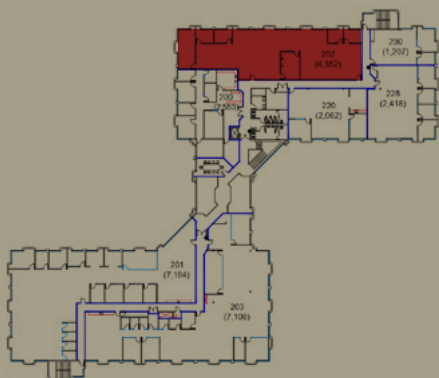


2nd Floor

Suite 202 / ±4,352 SF

- 4 Private Offices
- Conference Room
- Break Room
- Large Open Space
- Available Now

KEY PLAN



CONTACT US

Chris Blom | Executive Vice President | +1 650 480 2057 | chris.blom@jll.com | LIC #02031205
Ben Paul | Vice Chairman | +1 650 401 2123 | ben.paul@cushwake.com | LIC #01210872

[BACK TO AVAILABILITIES](#)



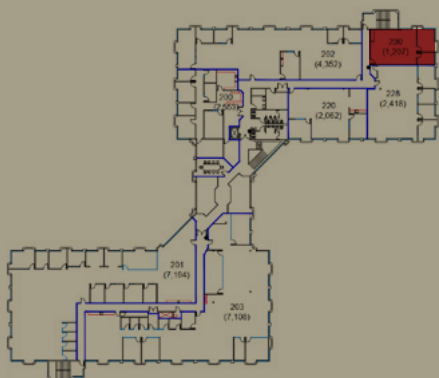


2nd Floor

Suite 230 / ±1,207 SF

- Private Office
- Conference Room
- Large Open Space
- Available Now

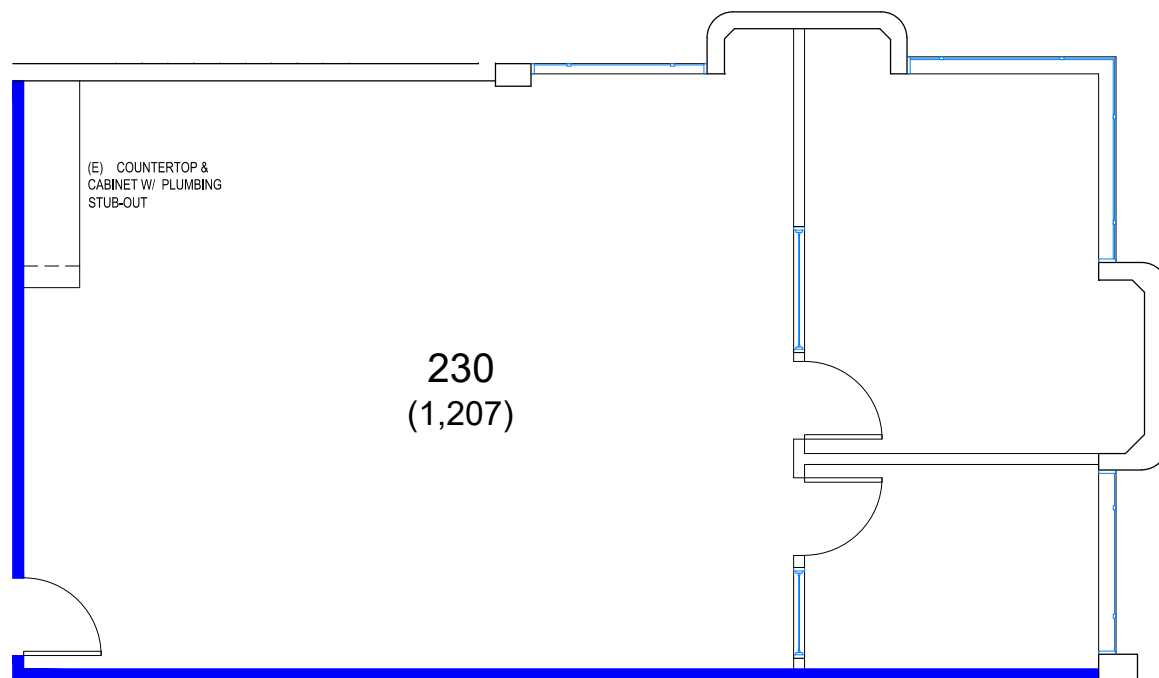
KEY PLAN



CONTACT US

Chris Blom | Executive Vice President | +1 650 480 2057 | chris.blom@jll.com | LIC #02031205
Ben Paul | Vice Chairman | +1 650 401 2123 | ben.paul@cushwake.com | LIC #01210872

 **360° VIEW VIRTUAL TOUR**



[BACK TO AVAILABILITIES](#)



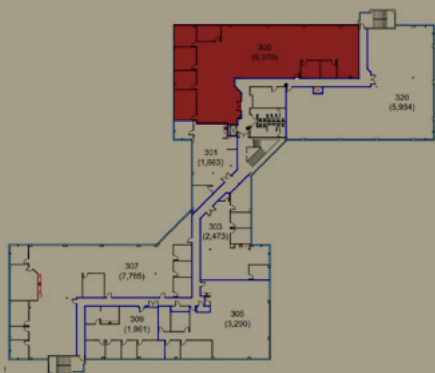


3rd Floor

Suite 300 / ±6,406 SF

- 6 Private Offices
- Conference Room
- Break Area
- Large Open Space
- Available Now

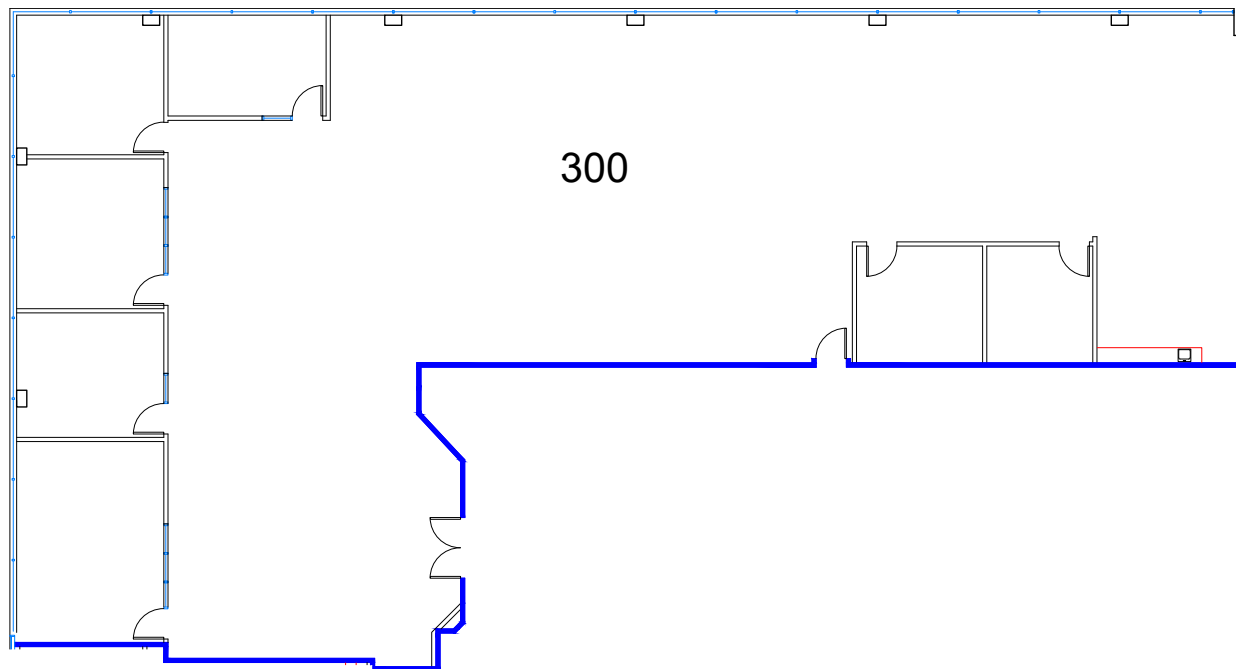
KEY PLAN



CONTACT US

Chris Blom | Executive Vice President | +1 650 480 2057 | chris.blom@jll.com | LIC #02031205
Ben Paul | Vice Chairman | +1 650 401 2123 | ben.paul@cushwake.com | LIC #01210872

360° VIEW VIRTUAL TOUR



[BACK TO AVAILABILITIES](#)



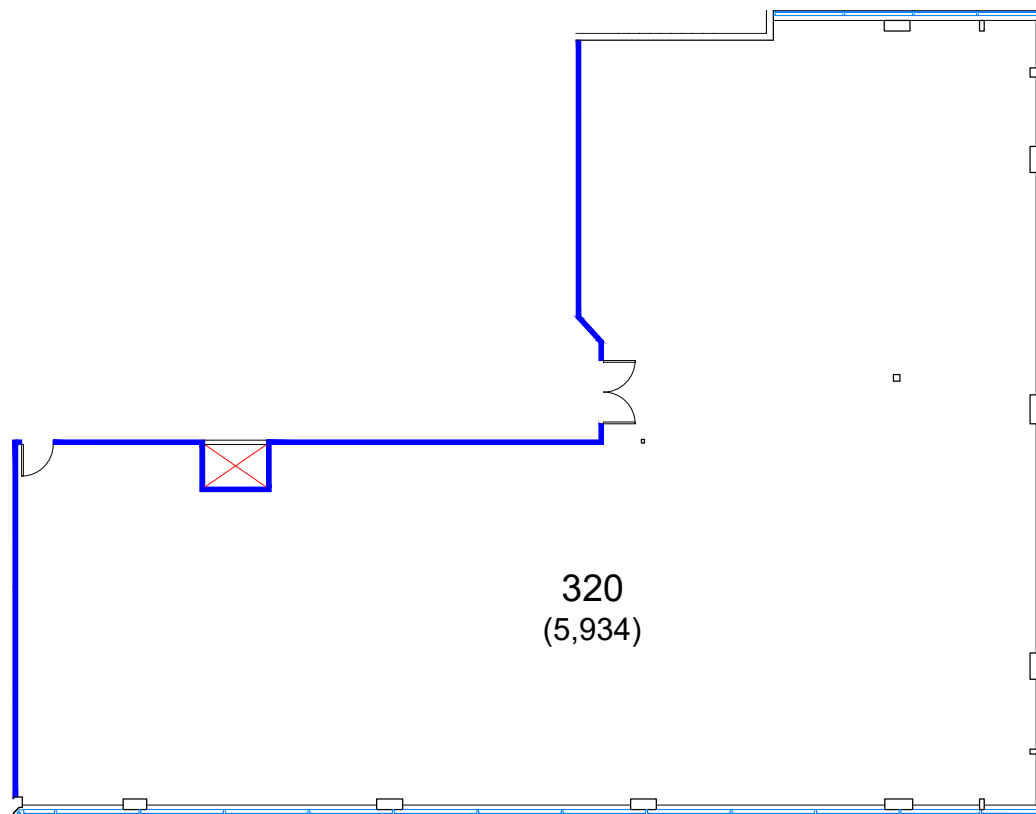
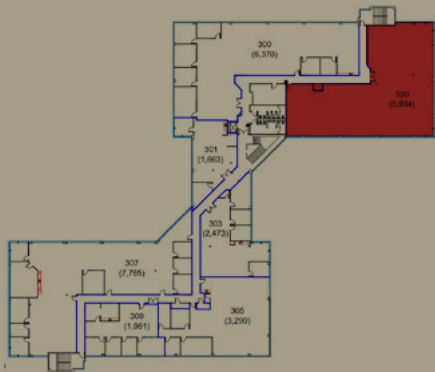


3rd Floor

Suite 320 / \pm 5,934 SF

- Large Open Space
- Available Now

KEY PLAN



CONTACT US

Chris Blom | Executive Vice President | +1 650 480 2057 | chris.blom@jll.com | LIC #02031205
Ben Paul | Vice Chairman | +1 650 401 2123 | ben.paul@cushwake.com | LIC #01210872

[BACK TO AVAILABILITIES](#)



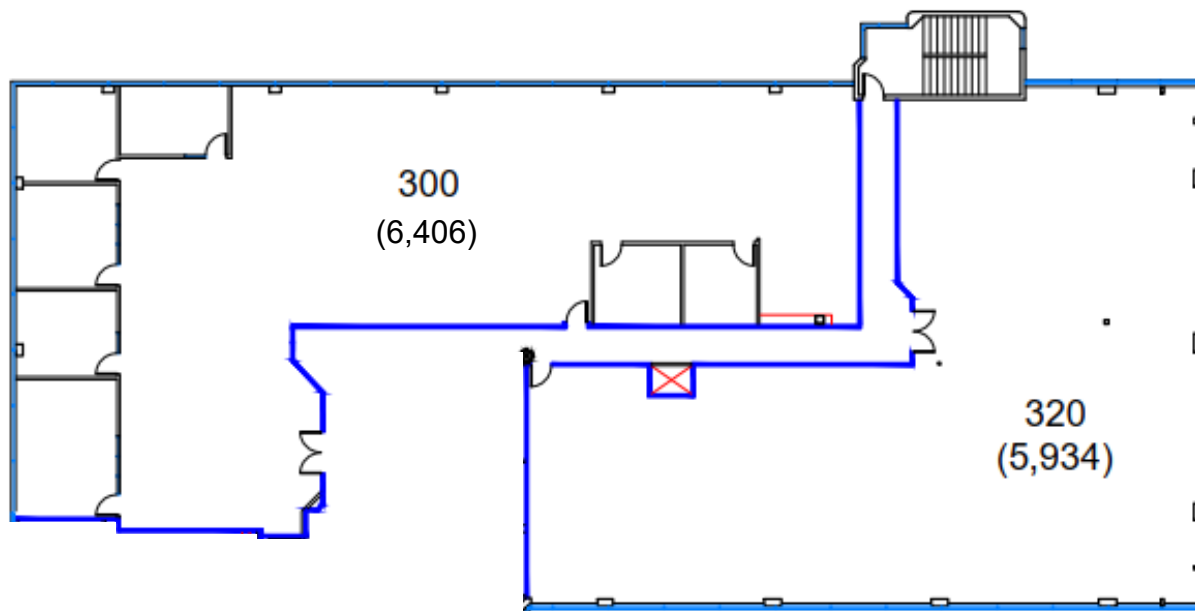
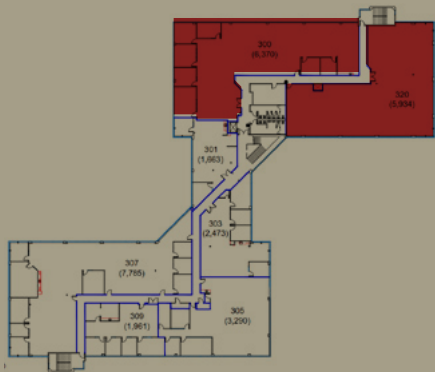


3rd Floor

Suite 300 + 320 / ±12,340 SF

- 6 Private Offices
- Conference Room
- Break Area
- Large Open Space
- Combined Entry
- Available Now

KEY PLAN



CONTACT US

Chris Blom | Executive Vice President | +1 650 480 2057 | chris.blom@jll.com | LIC #02031205
Ben Paul | Vice Chairman | +1 650 401 2123 | ben.paul@cushwake.com | LIC #01210872

[BACK TO AVAILABILITIES](#)



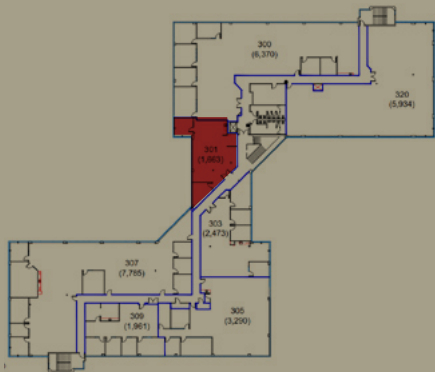


3rd Floor

Suite 301 / ±1,703 SF

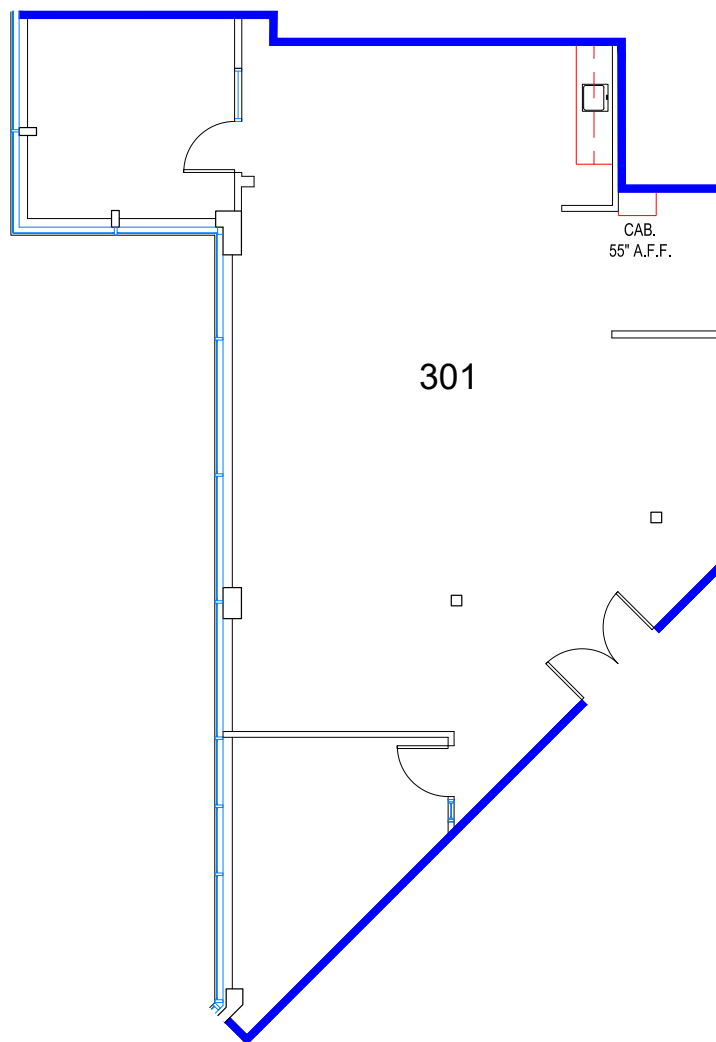
- 2 Private Offices
- Break Area
- Large Open Space
- Available Now

KEY PLAN



CONTACT US

Chris Blom | Executive Vice President | +1 650 480 2057 | chris.blom@jll.com | LIC #02031205
Ben Paul | Vice Chairman | +1 650 401 2123 | ben.paul@cushwake.com | LIC #01210872



[BACK TO AVAILABILITIES](#)



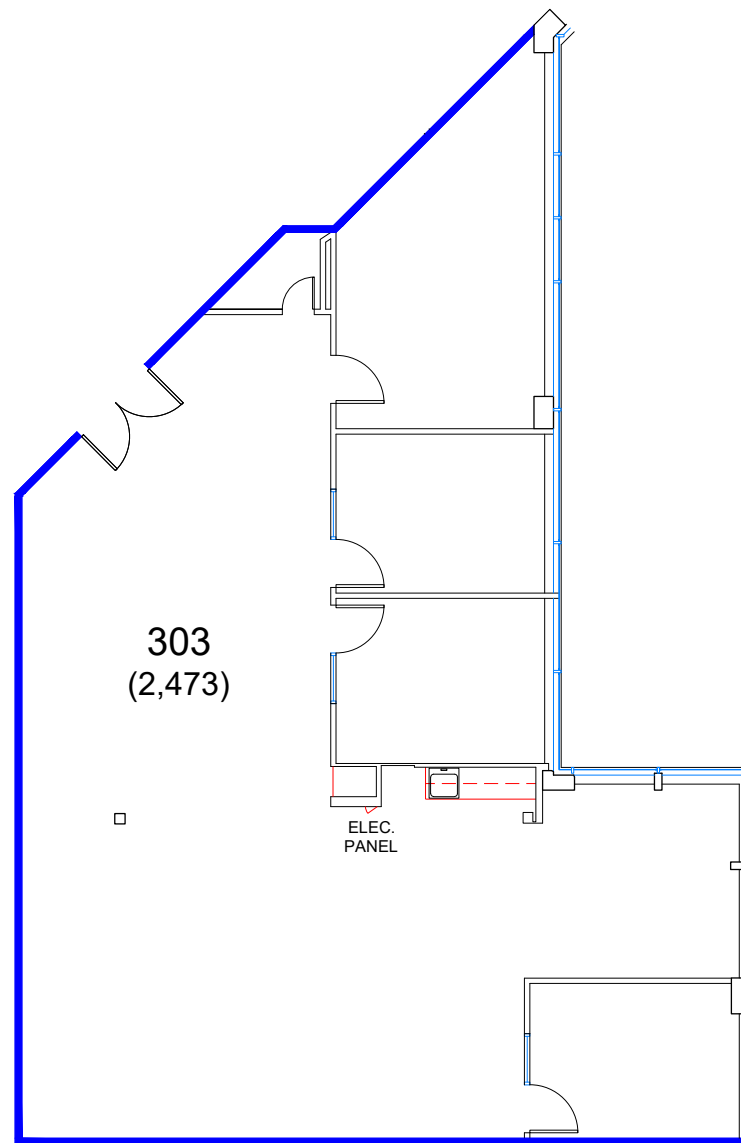
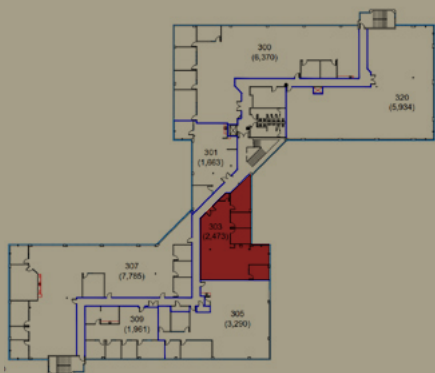


3rd Floor

Suite 303 / ±2,473 SF

- 3 Private Offices
- Conference Room
- Break Area
- Large Open Space
- Available Now

KEY PLAN



[BACK TO AVAILABILITIES](#)

CONTACT US

Chris Blom | Executive Vice President | +1 650 480 2057 | chris.blom@jll.com | LIC #02031205
Ben Paul | Vice Chairman | +1 650 401 2123 | ben.paul@cushwake.com | LIC #01210872



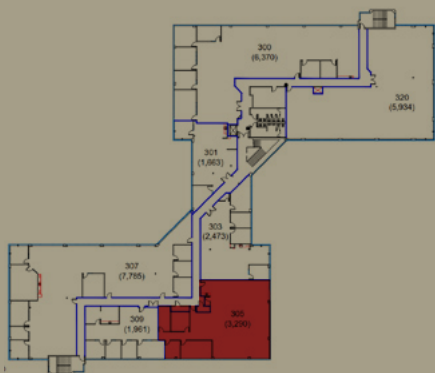


3rd Floor

Suite 305 / \pm 3,290 RSF

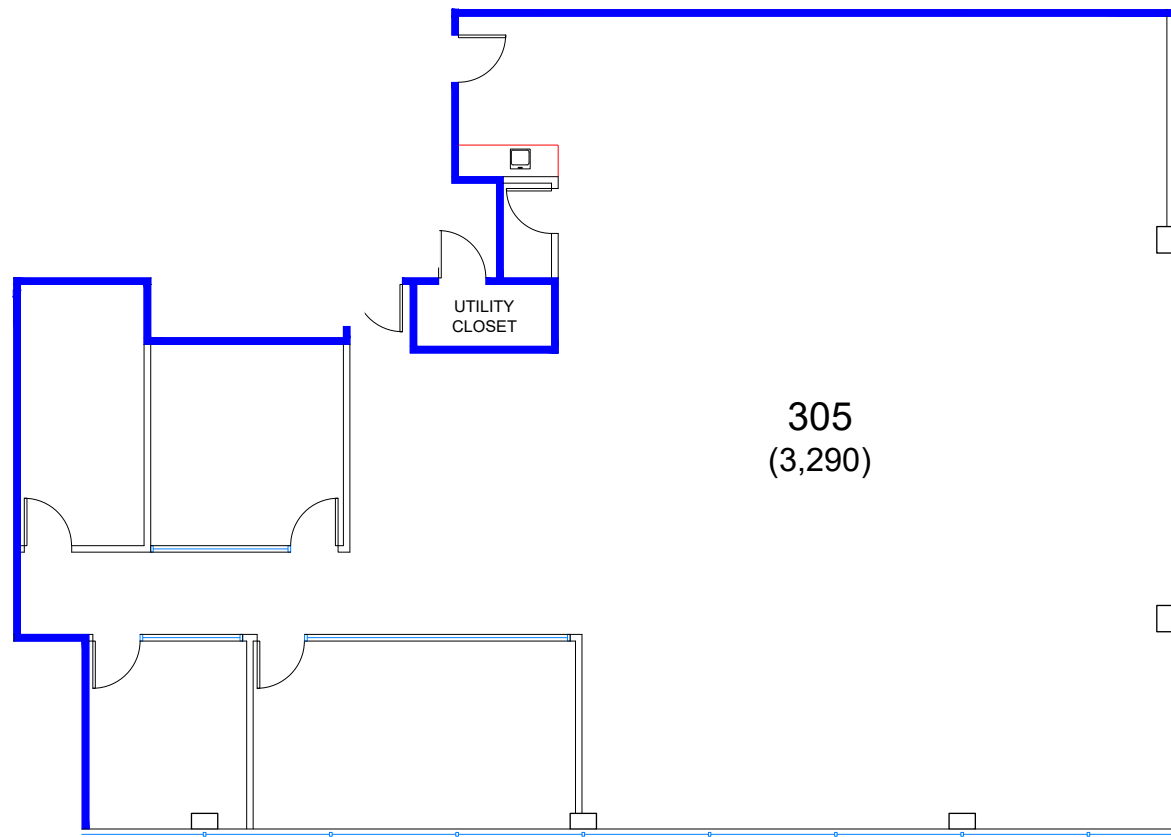
- 3 Private Offices
- Conference Room
- Break Area
- Large Open Space
- Available Now

KEY PLAN



CONTACT US

Chris Blom | Executive Vice President | +1 650 480 2057 | chris.blom@jll.com | LIC #02031205
Ben Paul | Vice Chairman | +1 650 401 2123 | ben.paul@cushwake.com | LIC #01210872



[BACK TO AVAILABILITIES](#)



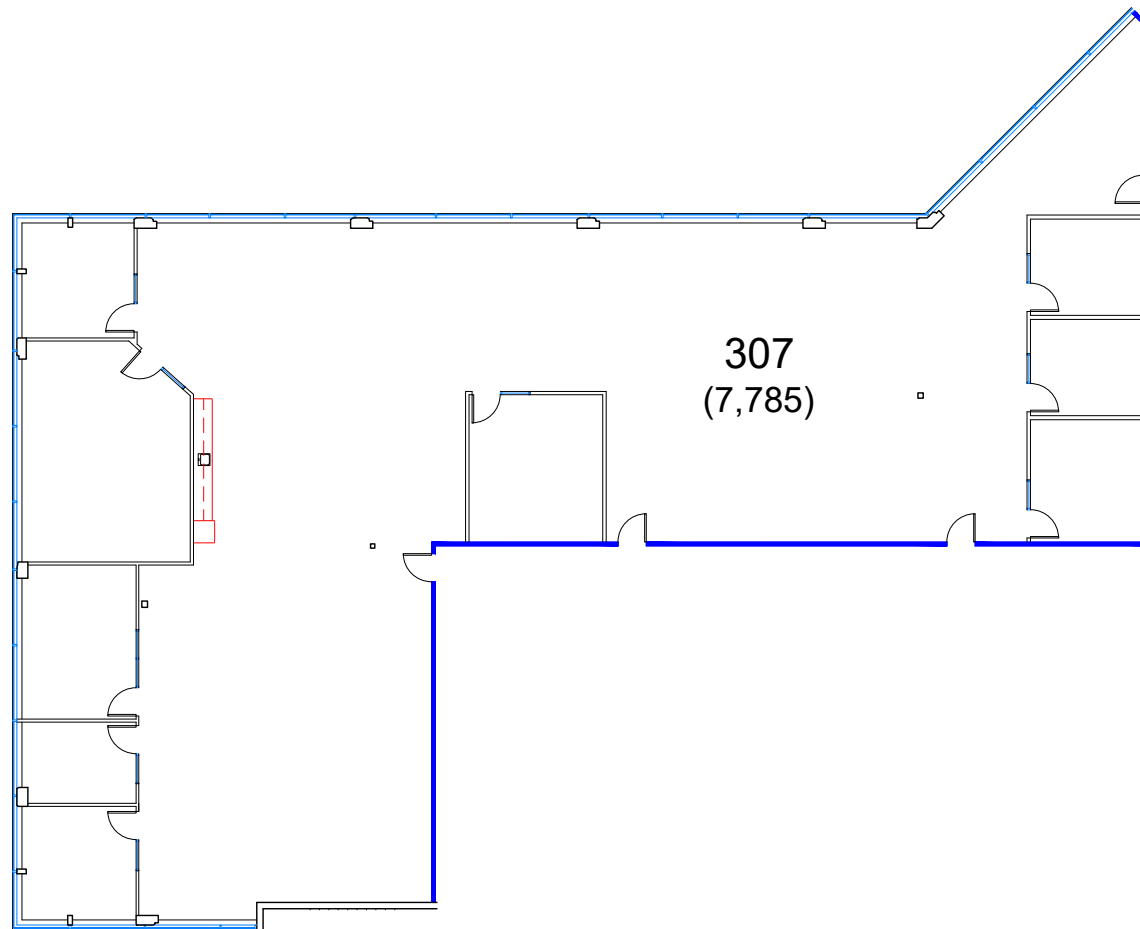
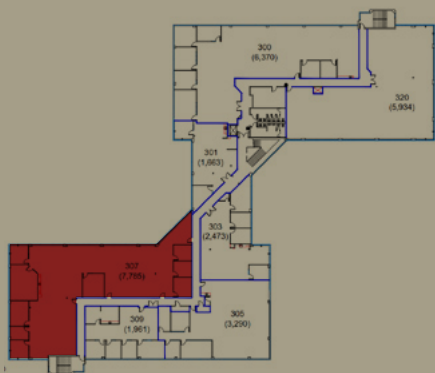


3rd Floor

Suite 307 / \pm 7,785 SF

- 7 Private Offices
- 2 Conference Rooms
- Break Area
- Large Open Space
- Available Now

KEY PLAN



CONTACT US

Chris Blom | Executive Vice President | +1 650 480 2057 | chris.blom@jll.com | LIC #02031205
Ben Paul | Vice Chairman | +1 650 401 2123 | ben.paul@cushwake.com | LIC #01210872

[BACK TO AVAILABILITIES](#)



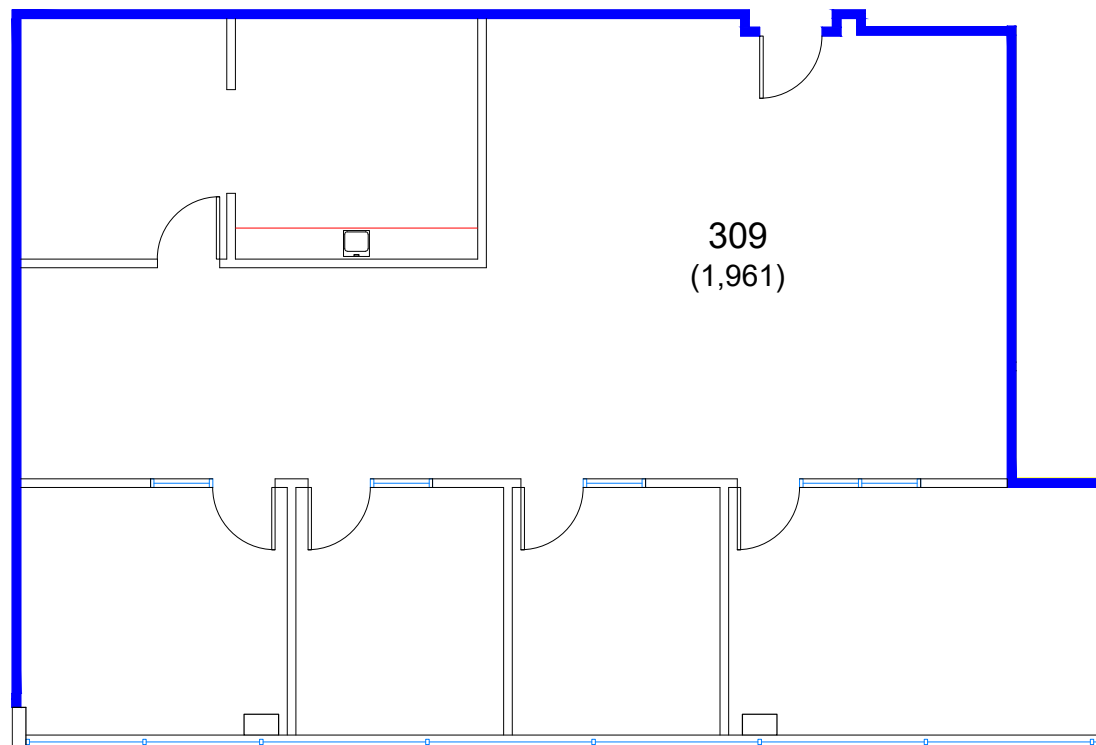
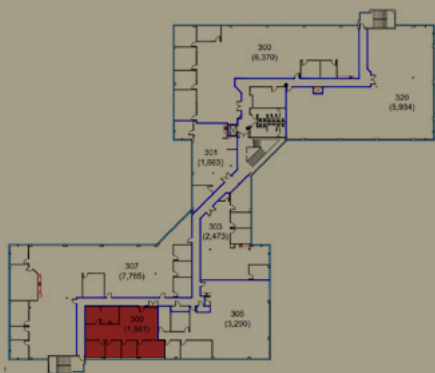


3rd Floor

Suite 309 / \pm 1,961 SF

- 3 Private Offices
- Conference Room
- Break Area
- Large Open Space
- Available Now

KEY PLAN



 **360° VIEW VIRTUAL TOUR**

CONTACT US

Chris Blom | Executive Vice President | +1 650 480 2057 | chris.blom@jll.com | LIC #02031205
Ben Paul | Vice Chairman | +1 650 401 2123 | ben.paul@cushwake.com | LIC #01210872

[BACK TO AVAILABILITIES](#)

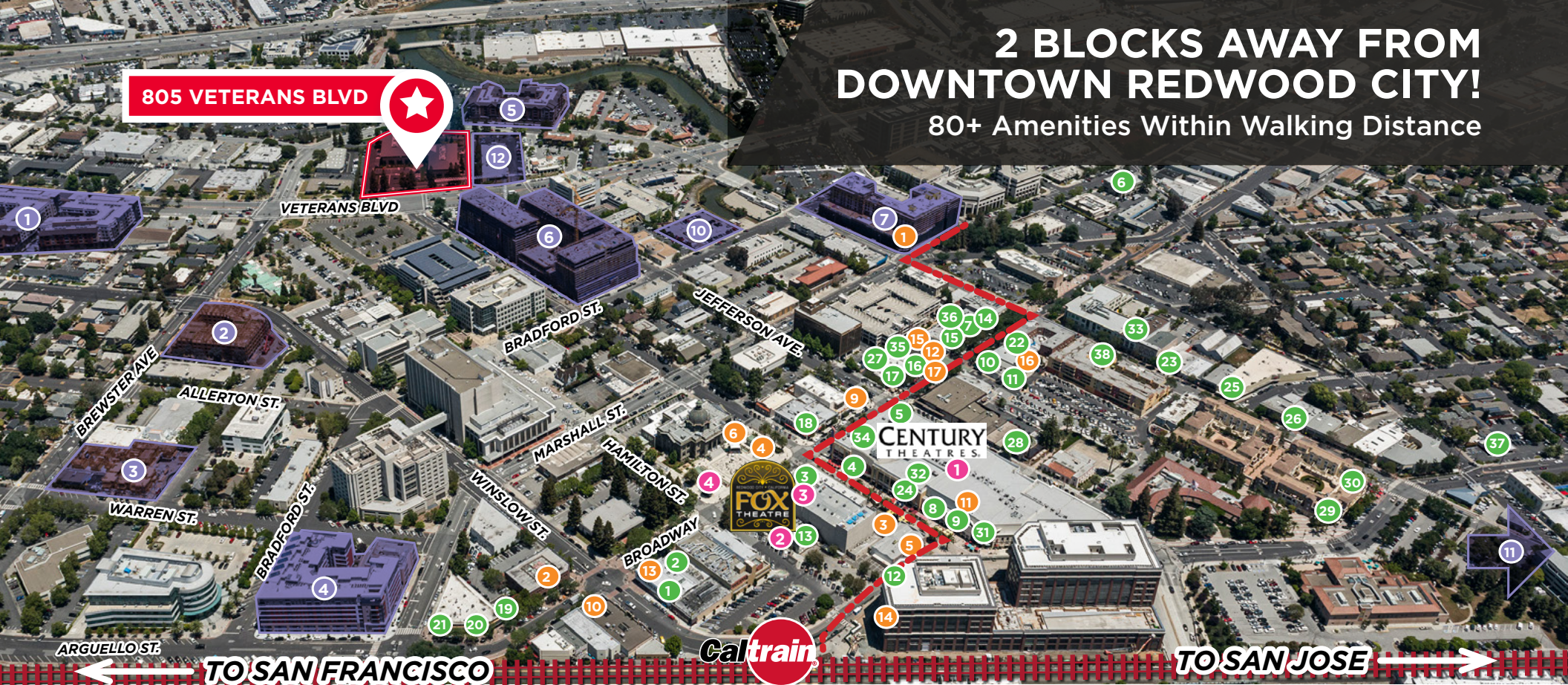


805 VETERANS BLVD



2 BLOCKS AWAY FROM DOWNTOWN REDWOOD CITY!

80+ Amenities Within Walking Distance



RESTAURANTS/FOOD

1 Broadway Masala	11 Rockn Wraps & Kabobs	21 Nikkos Mexican Pub	31 Timber and Salt
2 Bluefin Sushi	12 Old Port Lobster Shack	22 The Courthouse 2021	32 Chipotle
3 Quinto Sol	13 Go Fish Poke Bar	23 La Victoria Taqueria	33 Alhambra Irish House
4 Pizza My Heart	14 Vesta	24 West Park Farm and Sea	34 Five Guys
5 The Old Spaghetti Factory	15 Vino Santo Bistro	25 Angelicas	35 May's
6 La Viga Seafood & Cocina Mexicana	16 Yokohama	26 The Patty Shack	36 Nick The Greek
7 LV MAR	17 Margaritas	27 Talk of Broadway	37 Tacos El Grullense
8 Portabello Grill	18 Sakura Sushi	28 Pasha	38 Venga Empanadas
9 Arya Global Cuisine	19 The Sandwich Spot	29 Donato Enoteca	
10 Oyster Boy Seafood & Raw Bar	20 Orenchi Ramen	30 Milagros	

ENTERTAINMENT

1 Century Theatres (19 Screens)	3 Club Fox
2 Fox Theatre (2,000 Seat Capacity)	4 Courthouse Square (Countless Outdoor Events)

CLASS A RESIDENTIAL DEVELOPMENTS

1 64 Veterans Blvd.	264 Units	Completed 6/14
2 429 Fuller St.	133 Units	Completed 10/15
3 735 Brewster Ave.	18 Townhomes	Completed 10/15
4 201 Marshall St.	116 Units	Completed 6/14
5 333 Main St.	132 Units	Completed 3/14
6 525 Middlefield Rd.	471 Units	Completed 1/16
7 601 Main St.	196 Units	Completed 3/16
8 113 Monroe St.	305 Units	Completed 8/15
9 1548 Maple St.	131 Units	Deliver 2021
10 707 Bradford St.	117 Units	Deliver 2022
11 1409 El Camino	350 Units	Deliver 2020
12 849 Veterans Blvd.	90 Units	Completed 2019

COFFEE, DRINKS & DESSERTS

1 Coupa Cafe	10 Mademoiselle Colette
2 Red Giant Coffee	11 Cyclismo Cafe
3 Cafe La Tartine	12 Revere Coffee & Tea
4 Chatime	13 Teaspoon
5 Joe & The Juice	14 CRU
6 Froyola Yogurt	15 The Blacksmith
7 Starbucks Reserve	16 The Nighthawk
8 Peets Coffee	17 Bubble & Wrap
9 Philz Coffee	

CONTACT US

Chris Blom | Executive Vice President | +1 650 480 2057 | chris.blom@jll.com | LIC #02031205

Ben Paul | Vice Chairman | +1 650 401 2123 | ben.paul@cushwake.com | LIC #01210872



©2025 Cushman & Wakefield. All rights reserved. The information contained in this communication is strictly confidential. This information has been obtained from sources believed to be reliable but has not been verified. NO WARRANTY OR REPRESENTATION, EXPRESS OR IMPLIED, IS MADE AS TO THE CONDITION OF THE PROPERTY (OR PROPERTIES) REFERENCED HEREIN OR AS TO THE ACCURACY OR COMPLETENESS OF THE INFORMATION CONTAINED HEREIN, AND SAME IS SUBMITTED SUBJECT TO ERRORS, OMISSIONS, CHANGE OF PRICE, RENTAL OR OTHER CONDITIONS, WITHDRAWAL WITHOUT NOTICE, AND TO ANY SPECIAL LISTING CONDITIONS IMPOSED BY THE PROPERTY OWNER(S). ANY PROJECTIONS, OPINIONS OR ESTIMATES ARE SUBJECT TO UNCERTAINTY AND DO NOT SIGNIFY CURRENT OR FUTURE PROPERTY PERFORMANCE. COE-PM-West-08.25.2025