



WWW.SANMATEOGATEWAY.COM

# AVAILABLE SUITES

## 1800 GATEWAY DRIVE

**Suite 160** ±4,550

Hypothetical Headcount ±20

Private Offices 2

Conference Room 1

Kitchen 1

Server Room 1

Large Open Office Space 1

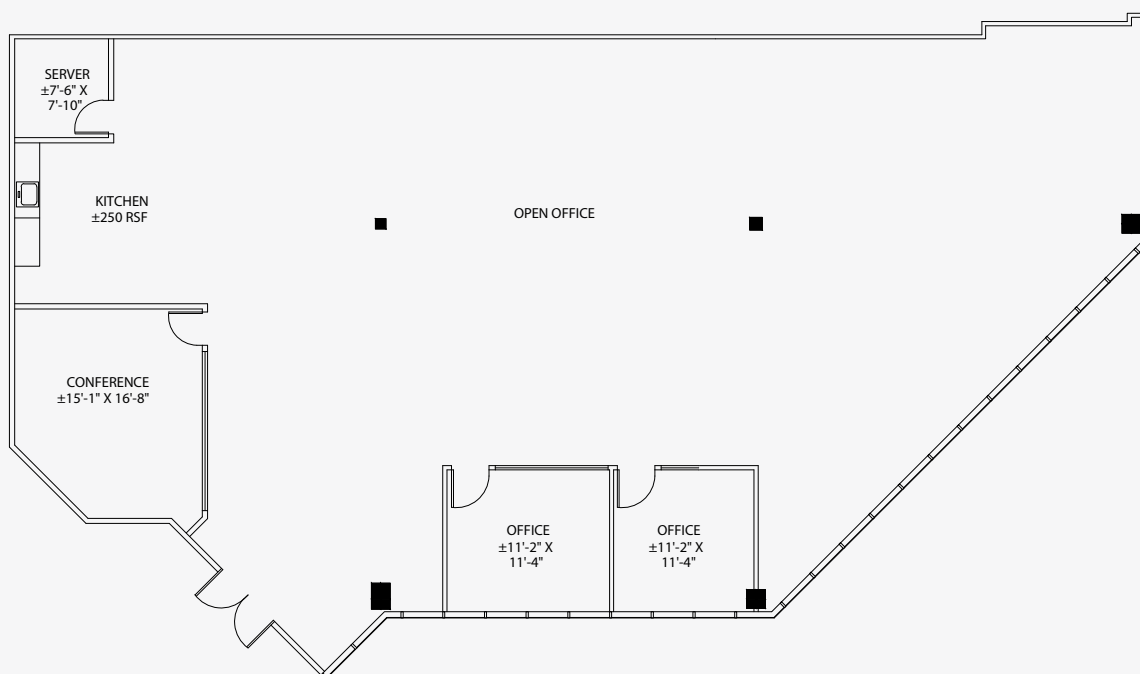
Polished Concrete Floors

*\*Available 2/1/22*

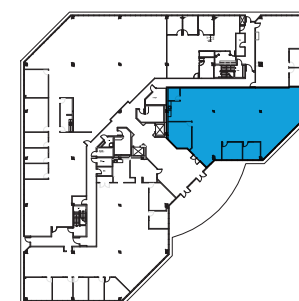
*\*Can be combined with Suite 150 for up to 6,519 SF*

[CLICK HERE FOR VIRTUAL TOUR](#)

**SPEC WORK COMPLETE**



## KEY PLAN



**Gary Boitano**  
Managing Director  
+1 650 401 2122  
gary.boitano@cushwake.com

**Clarke Funkhouser**  
Senior Managing Director  
+1 650 619 5579  
clarke.funkhouser@jll.com

 CUSHMAN & WAKEFIELD

 JLL