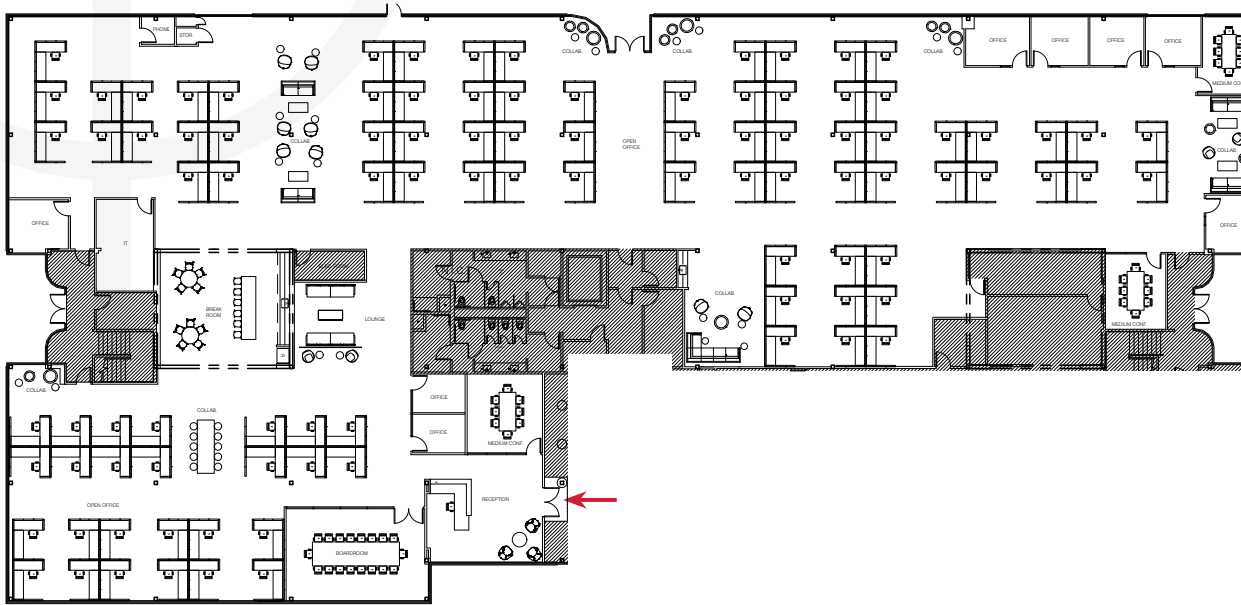


BUILDING 4300 - SUITE 110

~24,130 RSF



SUITE HIGHLIGHTS

8 Private Offices

3 Conference Rooms

Board Room

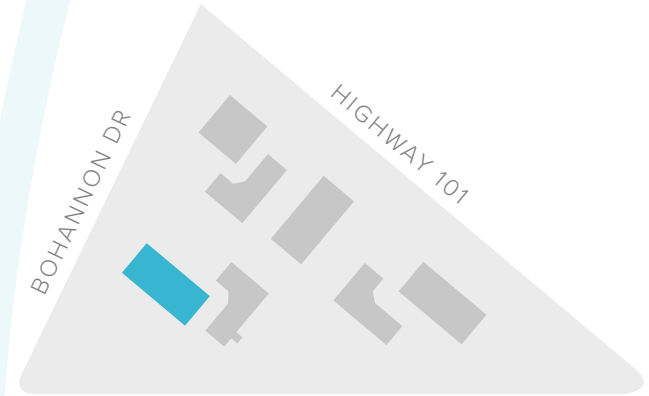
Storage Room

IT/Server Room

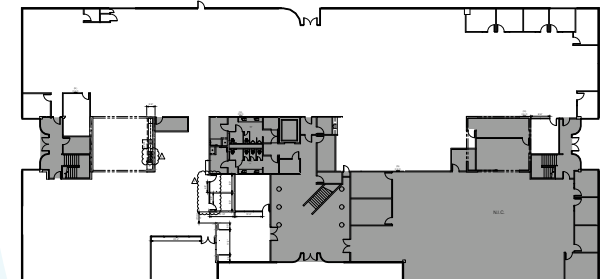
Break Room

TOTAL HEAD COUNT: 104

SITE PLAN:



KEY PLAN:



BEN PAUL | Vice Chairman | +1 650 401 2123 | ben.paul@cushwake.com | LIC #0121087

GARY BOITANO | Managing Director | +1 650 401 2122 | gary.boitano@cushwake.com | LIC #01902693

DAVID HIEBERT | Vice Chairman | +1 650 320 0250 | david.hiebert@cushwake.com | LIC #01189320