

Wonderful logistics center™

5104 EXPRESS AVENUE, SHAFTER, CA 93263

FOR LEASE / ±1,088,047 Sq. Ft.

NOW COMPLETE



For more information, please contact:

Phil Lombardo

+1 909 942 4678

phil.lombardo@cushwake.com

Lic. #00892477

Andrew Starnes

+1 909 942 4667

andrew.starnes@cushwake.com

Lic. #01799801

Cruise Adams

+1 909-942 4641

cruise.adams@cushwake.com

Lic. #02075368



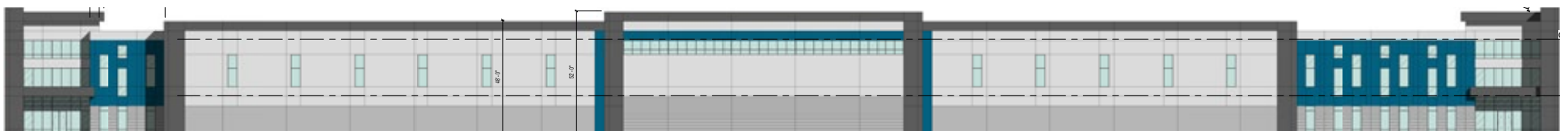
**CUSHMAN &
WAKEFIELD**

Wonderful real estate
DEVELOPMENT™

Building Specifications

Location:	<ul style="list-style-type: none"> Shafter / Bakersfield, CA 	Loading Doors:	<ul style="list-style-type: none"> 216 Dock High Doors (86 Doors w/ 40k lb Levelers) 3 (12'w x 15'h) Grade Level Doors
Address:	<ul style="list-style-type: none"> 5104 Express Avenue, Shafter, CA 93263 	Total Parking:	<ul style="list-style-type: none"> 495 Auto Stalls 935 Trailer Stalls
Building Size:	<ul style="list-style-type: none"> ±1,088,047 Sq. Ft. 	Fire Suppression:	<ul style="list-style-type: none"> ESFR
Site:	<ul style="list-style-type: none"> ±74.10 Acres Net 	Truck Court:	<ul style="list-style-type: none"> 321' on each side and 552' rear court; 7" Thick 3,500 PSI Concrete 100% Secure Truck Yards with 3 Gated Entrances
Construction:	<ul style="list-style-type: none"> Concrete Tilt-up 	Floors:	<ul style="list-style-type: none"> 7" Thick, 4,000 PSI; Flatness/Levelness - OAFF- 50 / OAFL-35 MLFF-35 / MLFL-25
Office:	<ul style="list-style-type: none"> 6,200 Sq. Ft. Spec Office 	Warehouse Lighting:	<ul style="list-style-type: none"> To Suit
Clear Height:	<ul style="list-style-type: none"> 40' Clear to Underside of Joists/Girders 37'-4" Clear in Loading Bays 	Electric:	<ul style="list-style-type: none"> Guaranteed In-place 4,000 amp UGPS/4,000 amp main service panel Expandable to 8,000 amps Guaranteed
Column Spacing:	<ul style="list-style-type: none"> 60' x 56' Loading Bays 60' x 56' Interior Bays 	Jurisdiction	<ul style="list-style-type: none"> Kern County, City of Shafter

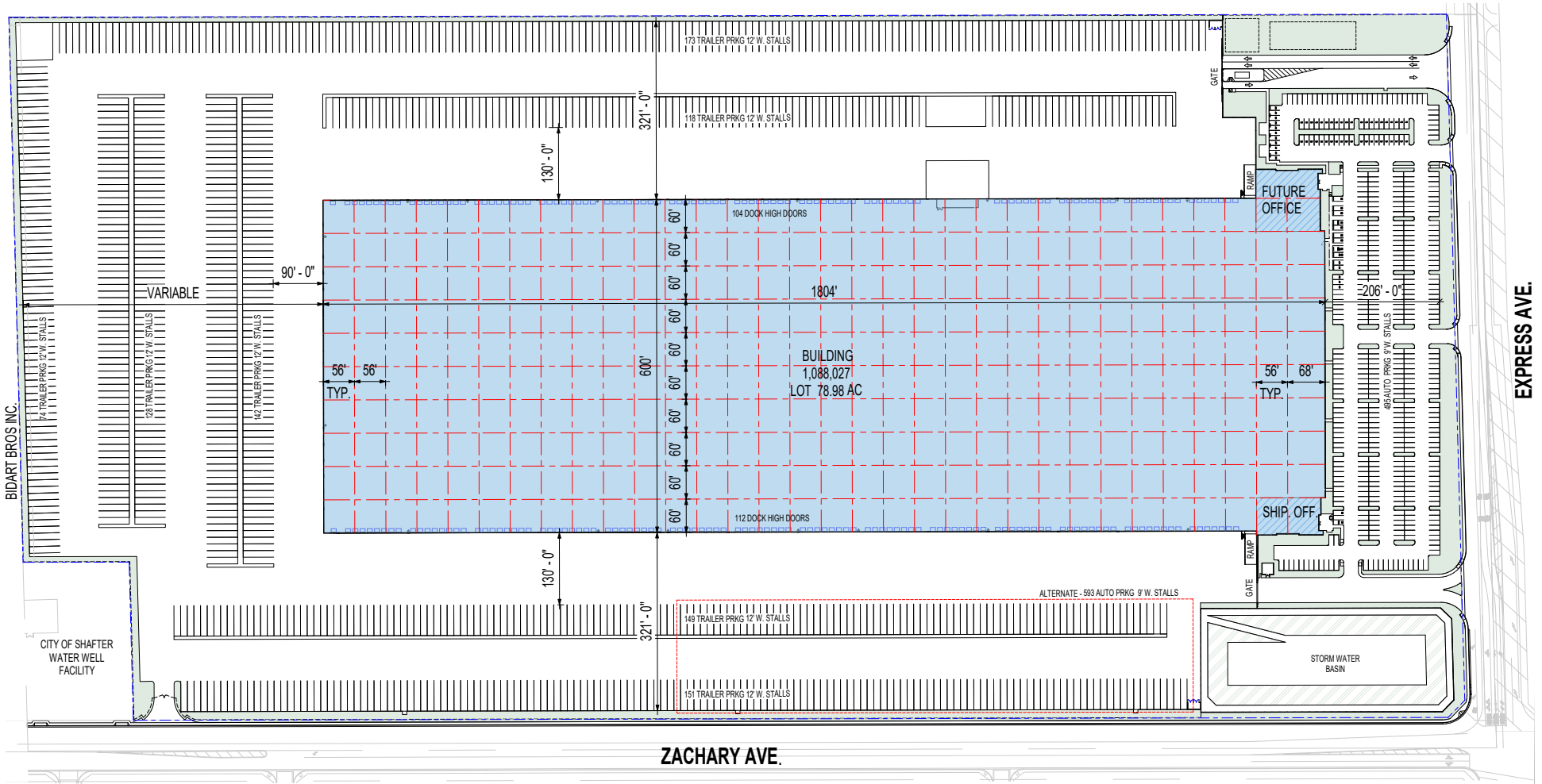
Elevation



Wonderful logistics center™

5104 EXPRESS AVENUE, SHAFTER, CA 93263

**FOR LEASE / ±1,088,047 SQ. FT.
NOW COMPLETE**

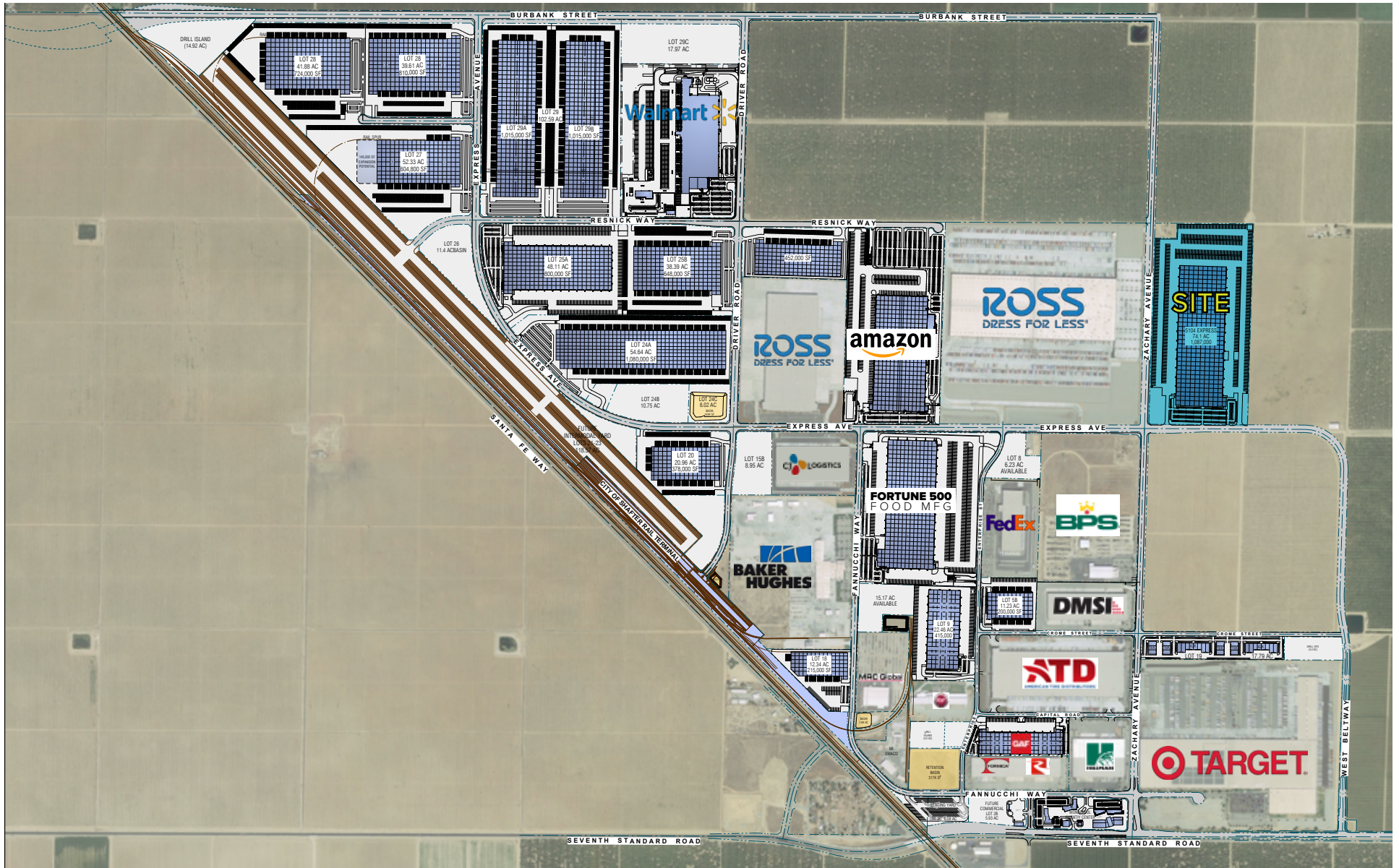


Wonderful logistics center™

5104 EXPRESS AVENUE, SHAFTER, CA 93263

FOR LEASE / ±1,088,047 SQ. FT.
NOW COMPLETE

Location





Transportation

Less than 1-day truck service to >60MM customers, 7 states and 3 major ports. 2-day truck service to 11 states.



About the County

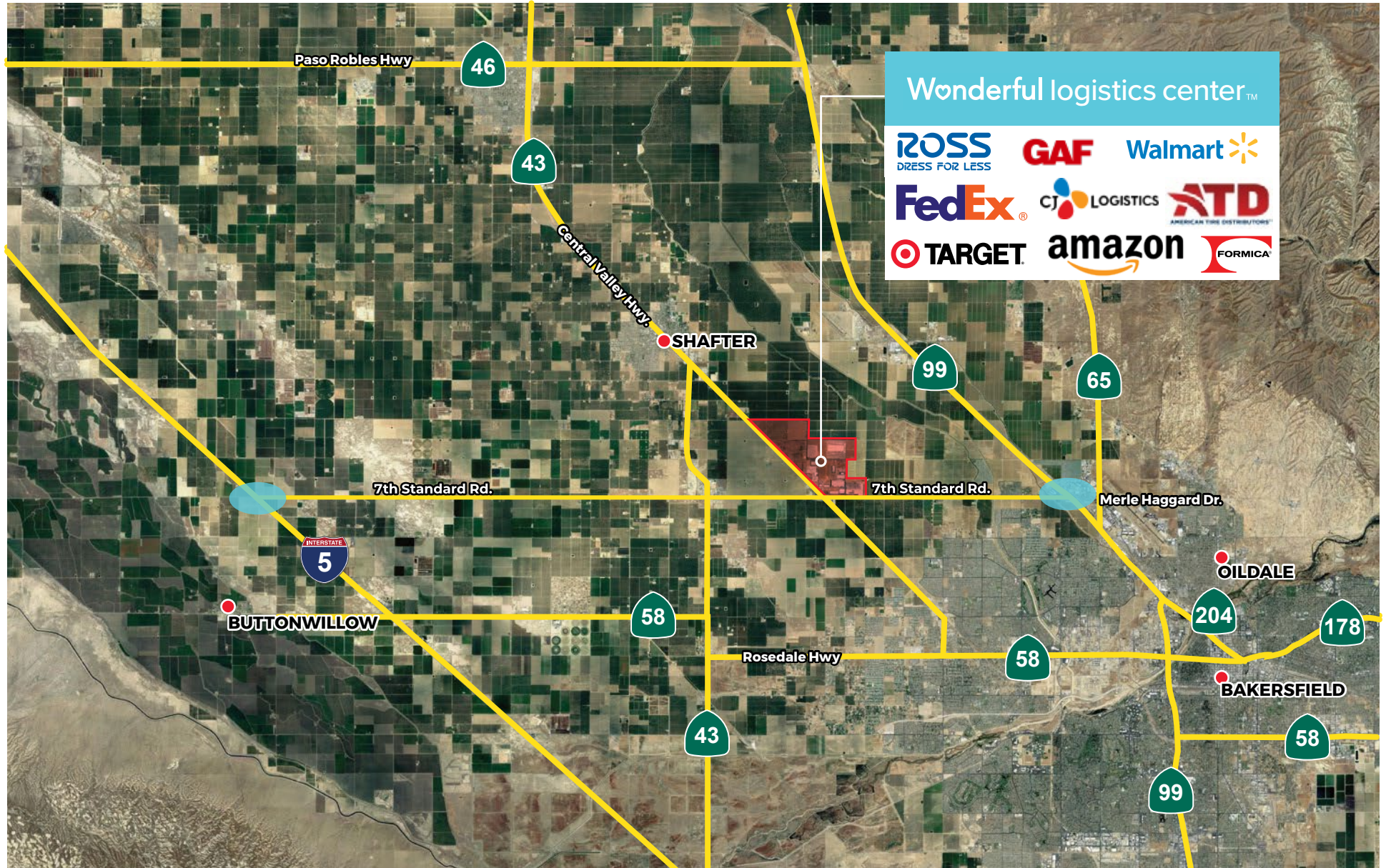
Kern County's transportation, logistics and advanced manufacturing industry has grown significantly in the past decade, thanks to companies like **Frito-Lay, Amazon, Target, Ross, American Tire Distributors, IKEA** and **Famous Footwear**. The industry employs over 14,000 people in key segments of distribution across 50 different distribution centers. Kern County's location provides for an easy, one-day turnaround trip to California's largest population concentrations, which include San Diego, Los Angeles, Sacramento and the Bay Area, as well as Las Vegas.

Wonderful logistics center™

5104 EXPRESS AVENUE, SHAFTER, CA 93263

FOR LEASE / ±1,088,047 SQ. FT.
NOW COMPLETE

Local Highways



Wonderful logistics center™

5104 EXPRESS AVENUE, SHAFTER, CA 93263

FOR LEASE / ±1,088,047 Sq. Ft.
NOW COMPLETE

For more information, please contact:

Phil Lombardo

+1 909 942 4678

phil.lombardo@cushwake.com

Lic. #00892477

Andrew Starnes

+1 909 942 4667

andrew.starnes@cushwake.com

Lic. #01799801

Cruise Adams

+1 909-942 4641

cruise.adams@cushwake.com

Lic. #02075368

Cushman & Wakefield of California | 901 Via Piemonte, Suite 200 | Ontario, CA 91764 | cushmanwakefield.com



**CUSHMAN &
WAKEFIELD**

Wonderful real estate
DEVELOPMENT™