



±33,480 SF to ±184,140 SF
Delivered & Move In Ready



1120 WOODS CHAPEL ROAD | DUNCAN, SC

BRIAN YOUNG, CCIM, SIOR
Senior Director
+1 864 370 8087
brian.j.young@cushwake.com

ELLIOTT FAYSSOUX, SIOR
Senior Director
+1 864 370 8190
elliott.fayssoux@cushwake.com

KACIE JACKSON, SIOR
Senior Director
+1 864 370 8193
kacie.jackson@cushwake.com





WOODS CHAPEL CROSSING

±33,480 SF to ±184,140 SF
Delivered & Move In Ready



[Click for Video](#)

GENERAL

- ±33,480 SF to ±184,140 SF
- ±1,500 SF of Spec Office
- Dimensions are 310' x 594'
- Column Spacing is 54' x 50'
- 60' Speed Bay
- 25 FC LED Lighting to be installed
- Path and Wireway Installed for EV Chargers
- Potential for 44 Trailer Spots
- 144 Auto Parks
- 2 Drive Ins
- 33 Dock Doors
- 155' Truck Court

FIRE PROTECTION

- ESFR Sprinkler System

ELECTRICAL

- 3,000amp Power Available

ROOFING

- 60 Mil TPO membrane

FLOOR

- 6" Reinforced Floor
- 10 mil Poly Vapor Barrier

BRIAN YOUNG, CCIM, SIOR
Senior Director
+1 864 370 8087
brian.j.young@cushwake.com

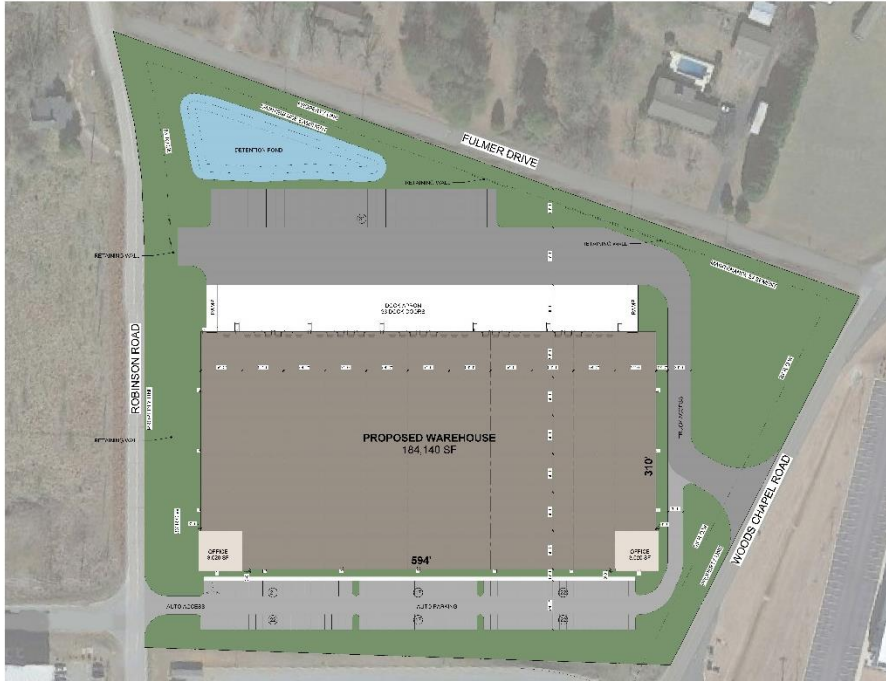
ELLIOTT FAYSSOUX, SIOR
Senior Director
+1 864 370 8190
elliott.fayssoux@cushwake.com

KACIE JACKSON, SIOR
Senior Director
+1 864 370 8193
kacie.jackson@cushwake.com

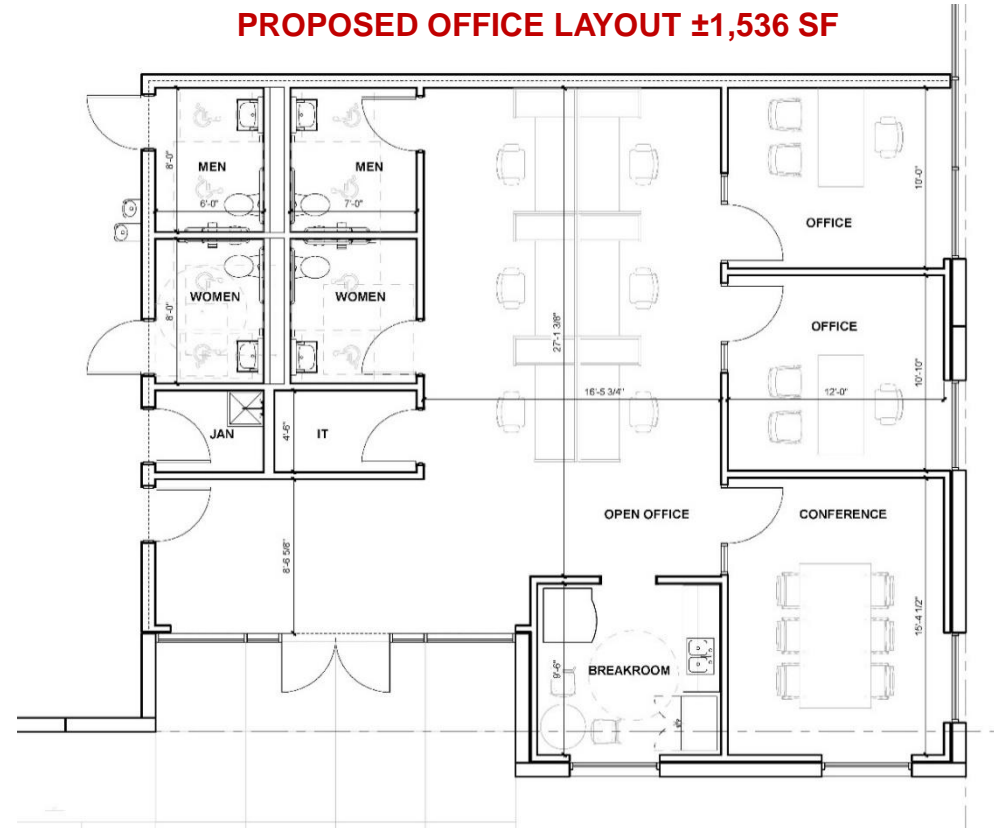




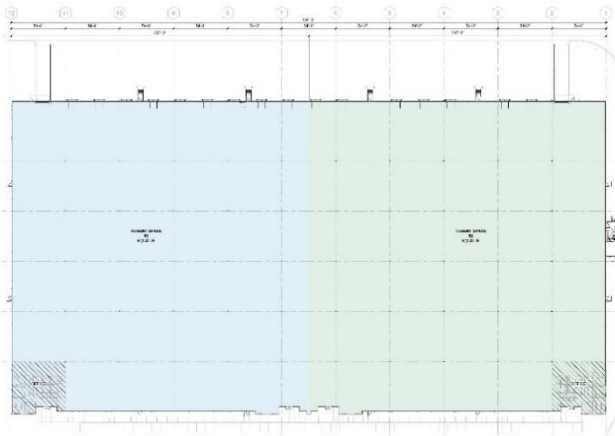
SITE PLAN



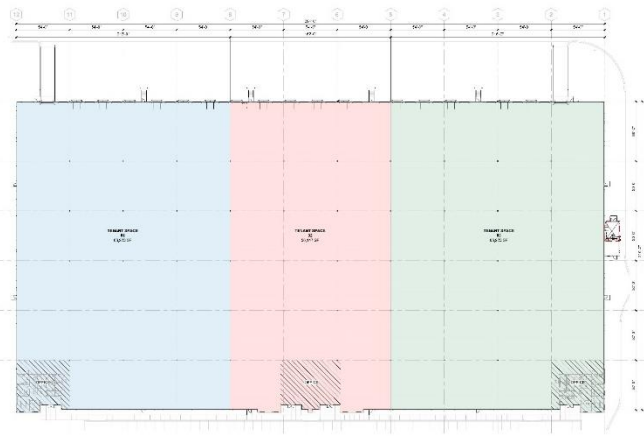
PROPOSED OFFICE LAYOUT ±1,536 SF



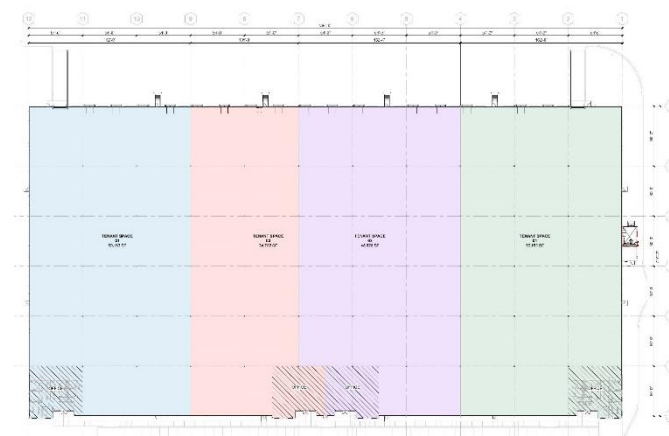
OPTION 1



OPTION 2



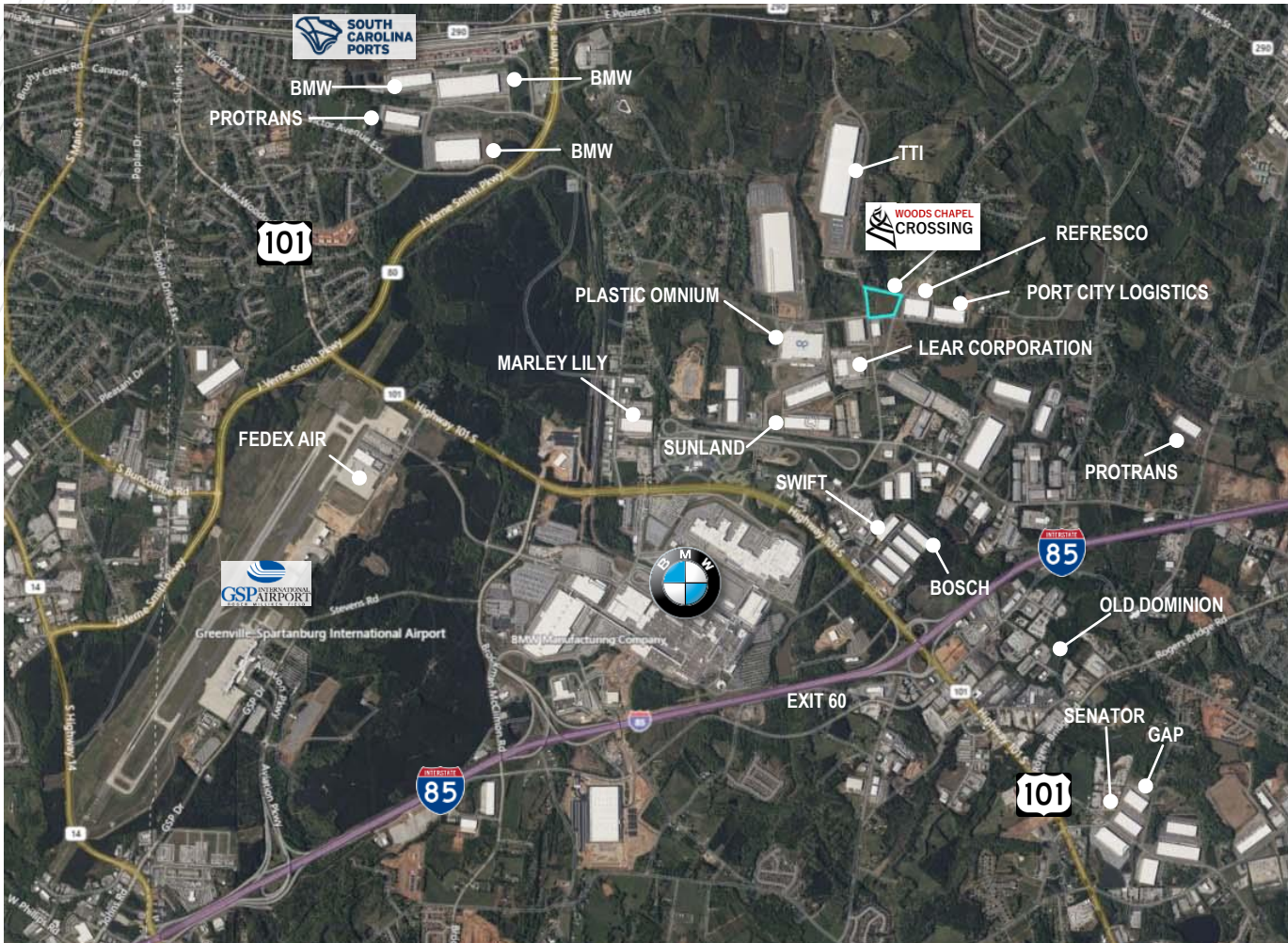
OPTION 3





WOODS CHAPEL CROSSING

±33,800 SF to ±184,140 SF
DELIVERING JULY 2024



1 Mile



4.6 Miles



Greer Inland Port
3 Miles



1.5 Miles



11.4 Miles



0.7 Miles

BRIAN YOUNG, CCIM, SIOR
Senior Director
+1 864 370 8087
brian.j.young@cushwake.com

ELLIOTT FAYSSOUX, SIOR
Senior Director
+1 864 370 8190
elliott.fayssoux@cushwake.com

KACIE JACKSON, SIOR
Senior Director
+1 864 370 8193
kacie.jackson@cushwake.com

