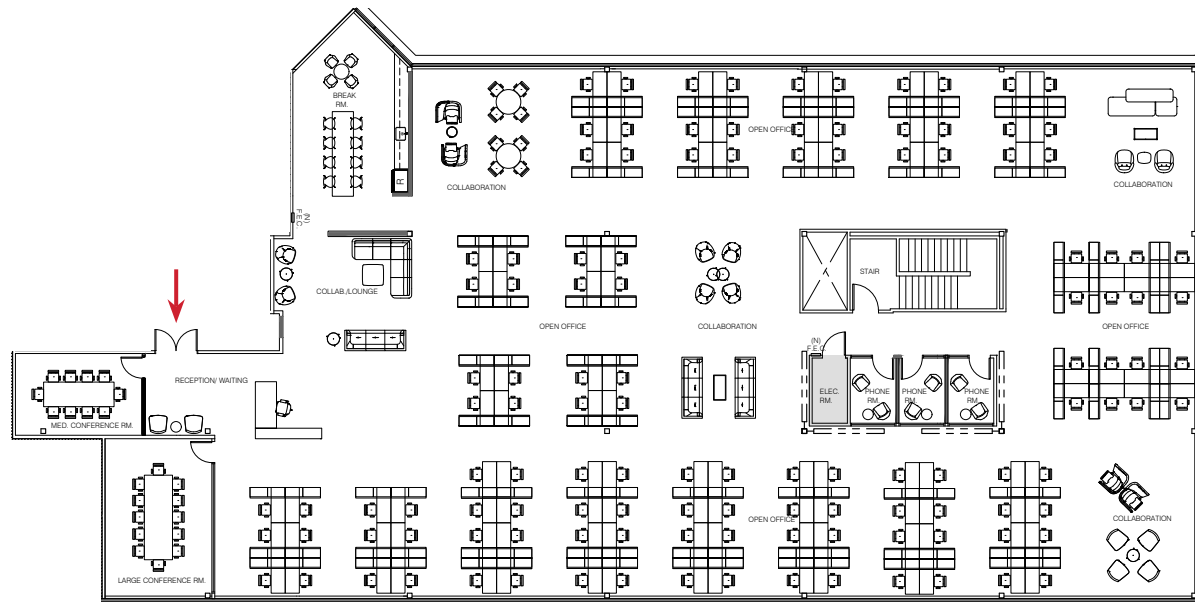


# BUILDING 4200 - SUITE 200

~13,322 RSF

\*HYPOTHETICAL FURNITURE PLAN



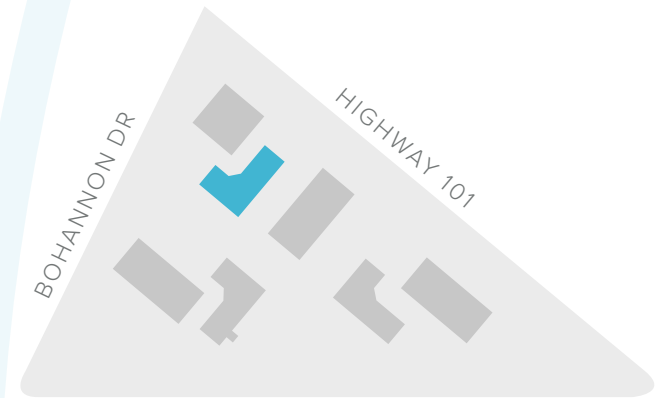
## SUITE HIGHLIGHTS

- 3 Phone rooms
- 2 Conference Rooms

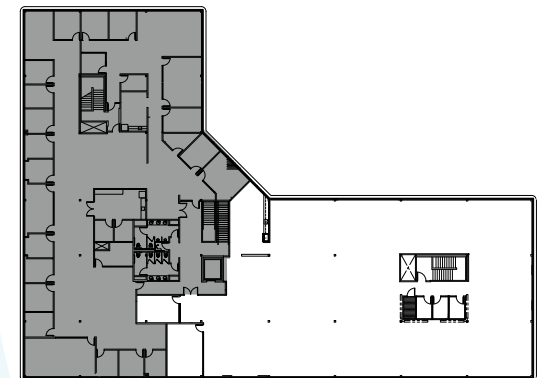
- Break Area
- Large Open Area

**TOTAL HEAD COUNT: 122**

## SITE PLAN:



## KEY PLAN:



**BEN PAUL** | Vice Chairman | +1 650 401 2123 | ben.paul@cushwake.com | LIC #0121087

**GARY BOITANO** | Managing Director | +1 650 401 2122 | gary.boitano@cushwake.com | LIC #01902693

**DAVID HIEBERT** | Vice Chairman | +1 650 320 0250 | david.hiebert@cushwake.com | LIC #01189320