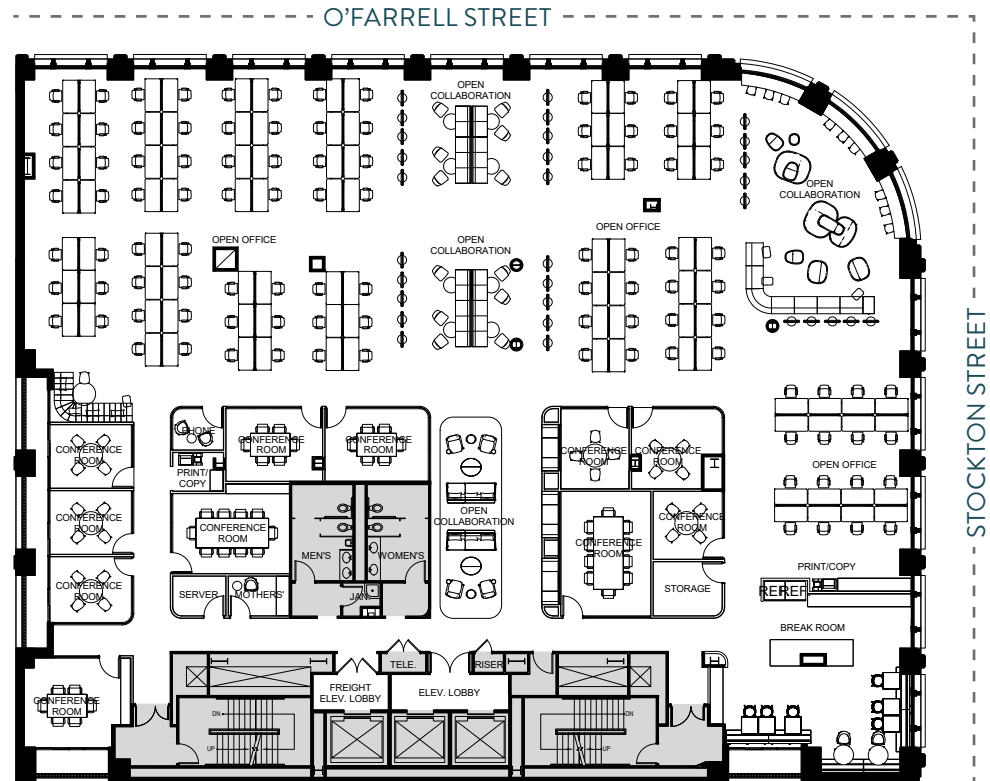


FLOOR HIGHLIGHTS

VIRTUAL RENDERING TOUR*

- + Currently in Shell Condition, Will Demise to suit Turnkey TIs
- + 12'6" Exposed Ceilings
- + Full HVAC



*HYPOTHETICAL PLAN

SAM WASSERSTEIN
Managing Director
415.773.3528
sam.wasserstein@cushwake.com
LIC #01798616

ELENA SACCONI
Associate
630.699.9687
elena.sacconi@cushwake.com
LIC #02151049