

BUILDING 4400 - SUITE 110 - SPEC LAB SUITE

~10,726 RSF

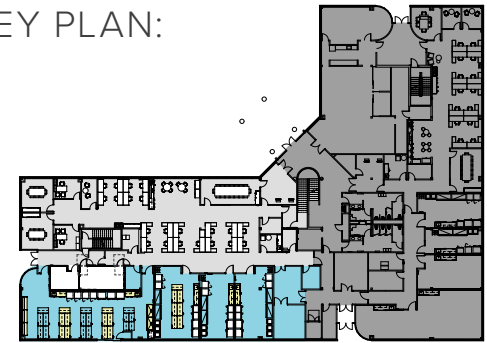


office
 lab
 spec lab
 common area

SITE PLAN:



KEY PLAN:



LAB PORTION

- 17 Lab Benches
- (4) Lab Support Rooms
- (2) 6 ft Fume Hood Plug and Play / Benching
- (4) Combination Emergency Shower and Eyewash Stations
- Dedicated Shipping and receiving area
- Single Pass Air

OFFICE PORTION

- 2 Private Offices
- 1 Huddle Room
- 2 Conference Rooms
- 16-Person Board Room
- 1 Mother/Wellness Room
- 1 Storage Room
- 1 IT/Server Room
- Break Room with Appliances
- Copy Area
- Reception Area

**Hypothetical furniture plan*

BEN PAUL | Vice Chairman | +1 650 401 2123 | ben.paul@cushwake.com | LIC #0121087

GARY BOITANO | Managing Director | +1 650 401 2122 | gary.boitano@cushwake.com | LIC #01902693

DAVID HIEBERT | Vice Chairman | +1 650 320 0250 | david.hiebert@cushwake.com | LIC #01189320