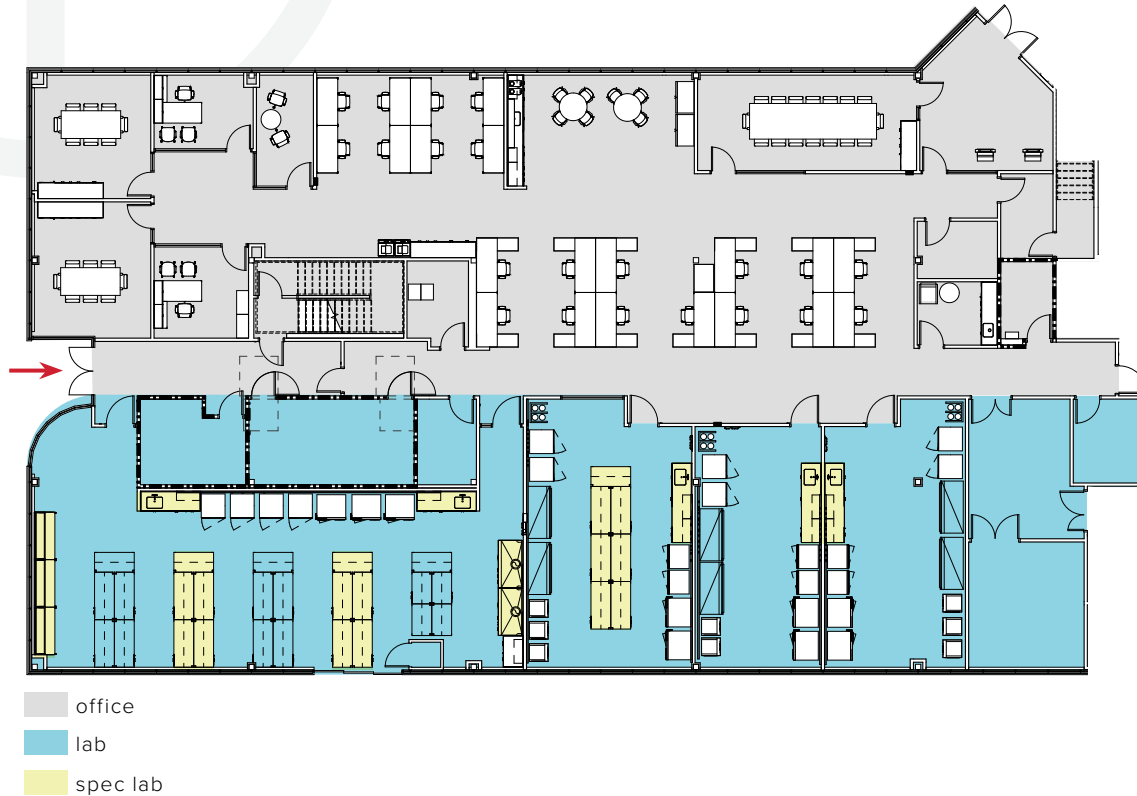


## BUILDING 4400 - SUITE 110 - SPEC LAB SUITE

~9,380 RSF

PLUG N' PLAY LAB SUITES



### LAB

17 Lab Benches

(4) Lab Support Rooms

(2) 6 ft Fume Hood

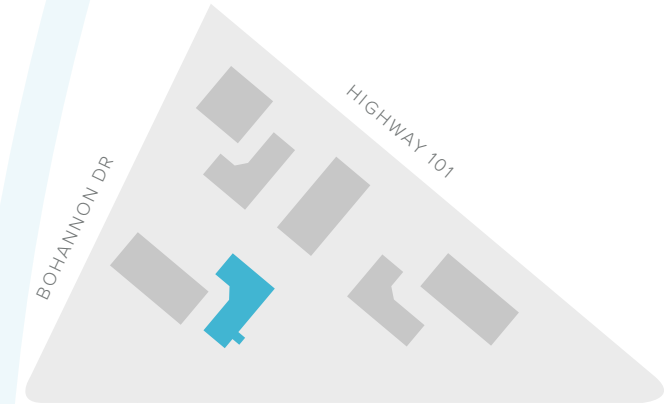
Plug and Play / Benching

(4) Combination Emergency Shower and Eyewash Stations

Dedicated Shipping and receiving area

Single Pass Air

### SITE PLAN:



### OFFICE

2 Private Offices

1 Huddle Room

2 Conference Rooms

16-Person Board room

1 Mother/Wellness Room

1 Storage Room

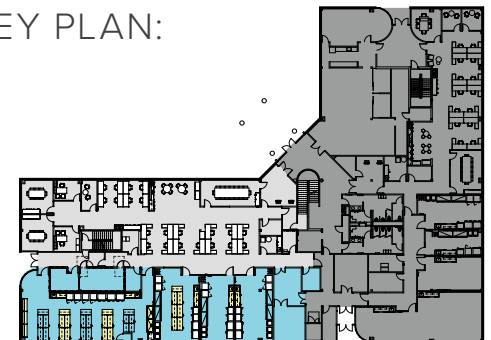
1 IT/Server Room

Break Room with Appliances

Copy Area

Reception Area

### KEY PLAN:



**BEN PAUL** | Vice Chairman | +1 650 401 2123 | ben.paul@cushwake.com | LIC #0121087

**GARY BOITANO** | Managing Director | +1 650 401 2122 | gary.boitano@cushwake.com | LIC #01902693

**DAVID HIEBERT** | Vice Chairman | +1 650 320 0250 | david.hiebert@cushwake.com | LIC #01189320