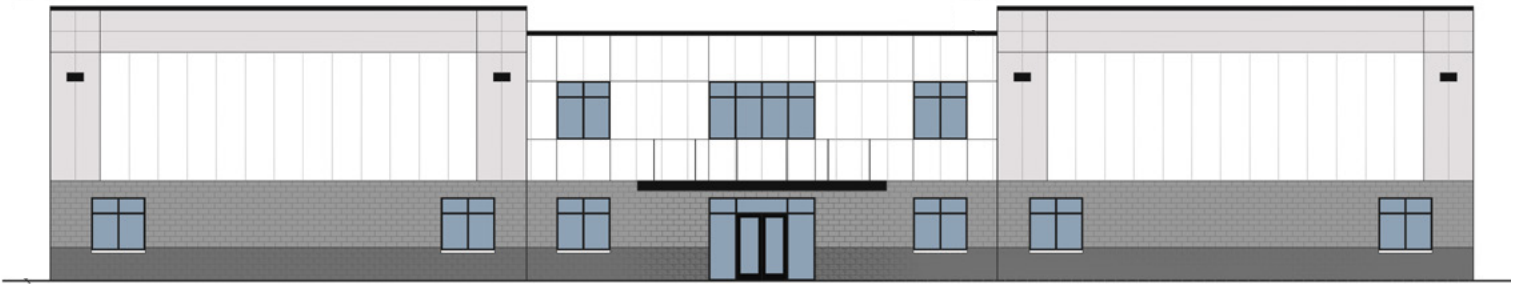


LOT C

±35,916 SF FOR LEASE



PARK HIGHLIGHTS

- ZONED CORPORATE CAMPUS PUD
- 30,021 CARS PER DAY ON STATE ROAD 37
- 13 MINUTES TO I-465



AVAILABLE
±35,916 SF



SITE AREA
±2.68 ACRES

VIEW WEBSITE

washingtonbp.com



AVAILABLE
OCTOBER 2025

RYAN E. BAKER, SIOR, CCIM

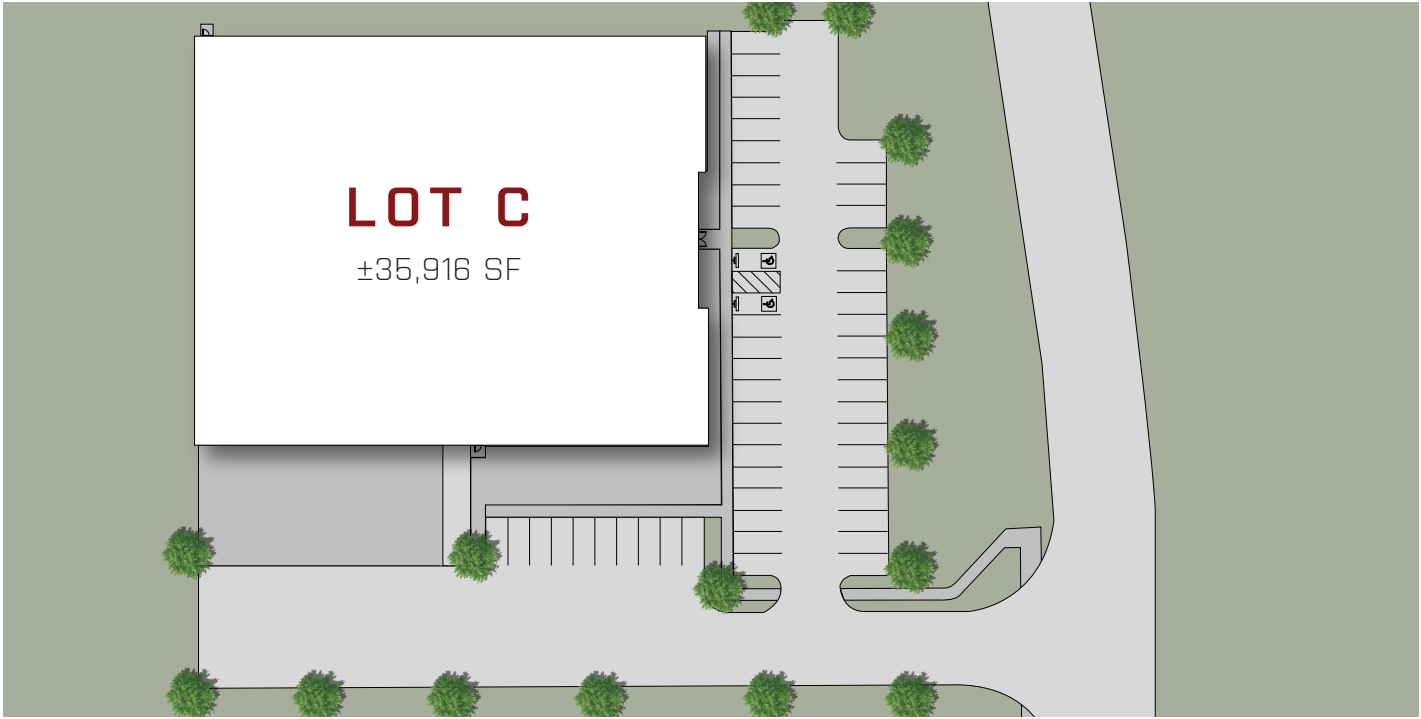
Cushman & Wakefield
+1 317 352 5428
ryan.baker@cushwake.com

GLENN J. BILL

eXp Realty - Commercial
+1 317 590 7757
glenn.bill@exprealty.com

PATCH

 **CUSHMAN & WAKEFIELD**



LOT C
±35,916 SF

BUILDING SPECS



AVAILABLE
OCTOBER 2025



LOADING
3 (9' X 10') DOCKS



DRIVE IN
1 (12' X 14')



CLEAR HEIGHT
±24'



POWER
800 AMPS AT
120/208 VOLTS



SITE AREA
±2.68 ACRES



CAR PARKING
±50



ZONING
CORPORATE CAMPUS PUD



TRUCK COURT
120' BY 100'



DIMENSIONS
212' X 170'



SPRINKLER
ESFR



FLOOR
4,000 PSI 6"
UNREINFORCED



ROOF
STANDING SEAM METAL
ROOF

