

1528 S. EL CAMINO REAL

SAN MATEO, CA



±1,135 - ±1,136 SF
OFFICE SPACES

Chris Blom
Director
+1 650 931 2210
chris.blom@cushwake.com
LIC #02031205

1350 Bayshore Hwy., Suite 900
Burlingame, CA
main +1 650 347 3700
fax +1 650 347 4307
cushmanwakefield.com

Cushman & Wakefield Copyright 2021. No warranty or representation, express or implied, is made to the accuracy or completeness of the information contained herein, and same is submitted subject to errors, omissions, change of price, rental or other conditions, withdrawal without notice, and to any special listing conditions imposed by the property owner(s). As applicable, we make no representation as to the condition of the property (or properties) in question.

1528 S. EL CAMINO REAL

SAN MATEO, CA

AVAILABLE

SUITE #	SF	NOTES
103	±1,136 RSF	Private Office, Conference Room, Kitchenette Available 8/1/25
301	±1,135 RSF	Private Office, Full Kitchen Private Bathroom & Private Deck

PROPERTY HIGHLIGHTS

- Recently Upgraded Common Areas
- Rooftop Deck
- Structured Covered Parking
- Operable Windows
- Easy Access to Hwy 101 & 280
- 0.4 Miles to Caltrain
- Proximate to DT San Mateo Amenities
- Live/Work Possible On-site
- On-site Storage Available for Lease

Chris Blom

Director

+1 650 931 2210

chris.blom@cushwake.com

LIC #02031205



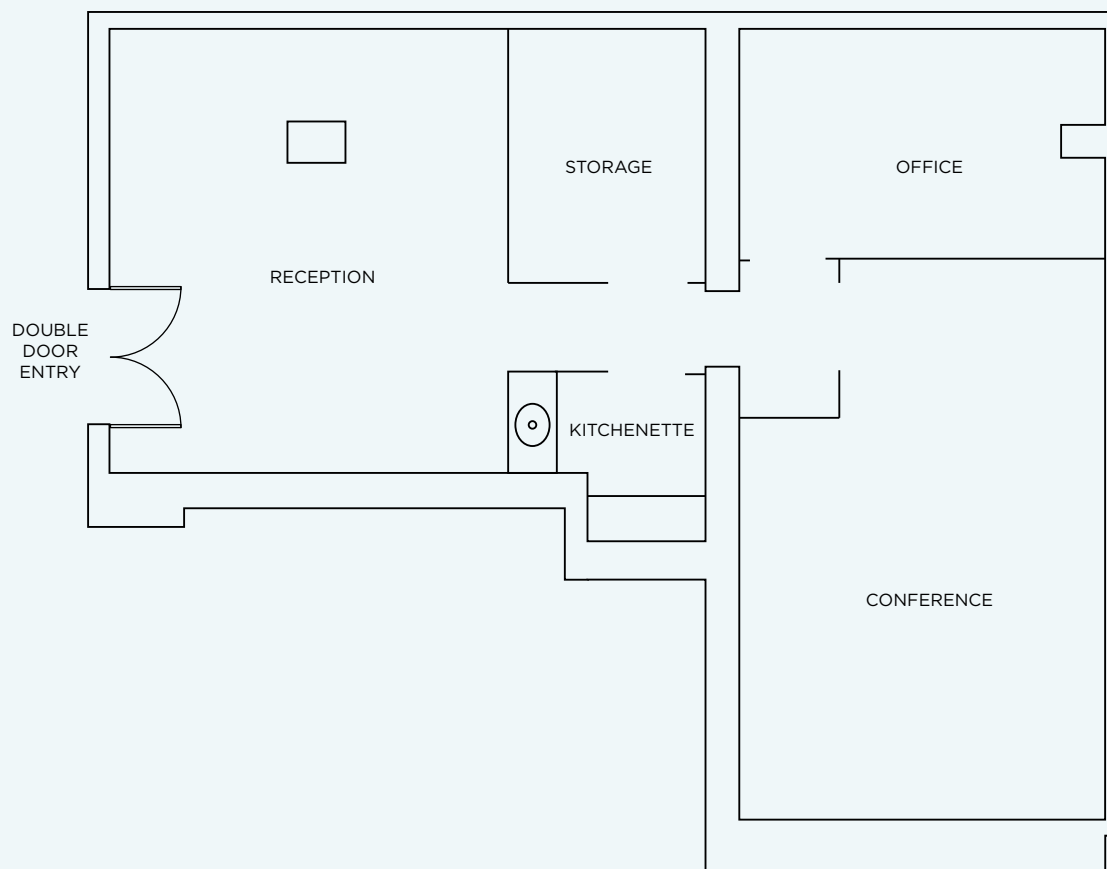
1528 S. EL CAMINO REAL

SAN MATEO, CA



SUITE 103 | ±1,136 SF

- 1 Private Office
- 1 Conference Room
- Kitchenette
- Available 8/1/25



Chris Blom

Director
+1 650 931 2210
chris.blom@cushwake.com
LIC #02031205

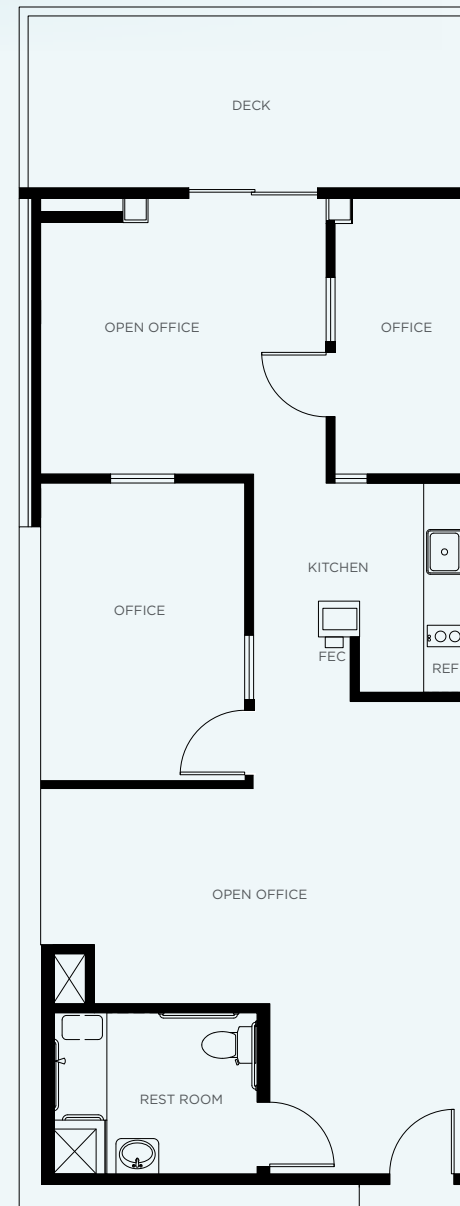
1528 S. EL CAMINO REAL

SAN MATEO, CA



SUITE 301 | ±1,135 SF

- Available 8/1/25
- Live/Work Opportunity
- 2 Private Offices
- Kitchen
- Private Bathroom
- Private Deck



Chris Blom

Director
+1 650 931 2210
chris.blom@cushwake.com
LIC #02031205

1528 S. EL CAMINO REAL

SAN MATEO, CA

RESTAURANTS

- 1 All Spice
- 2 Jack's Restaurant & Bar
- 3 El Sinaloense
- 4 McDonald's
- 5 Starbucks
- 6 Santa Ramen
- 7 Heidi's Pies

SERVICES

- 1 Safeway
- 2 CVS
- 3 Nijiya Market

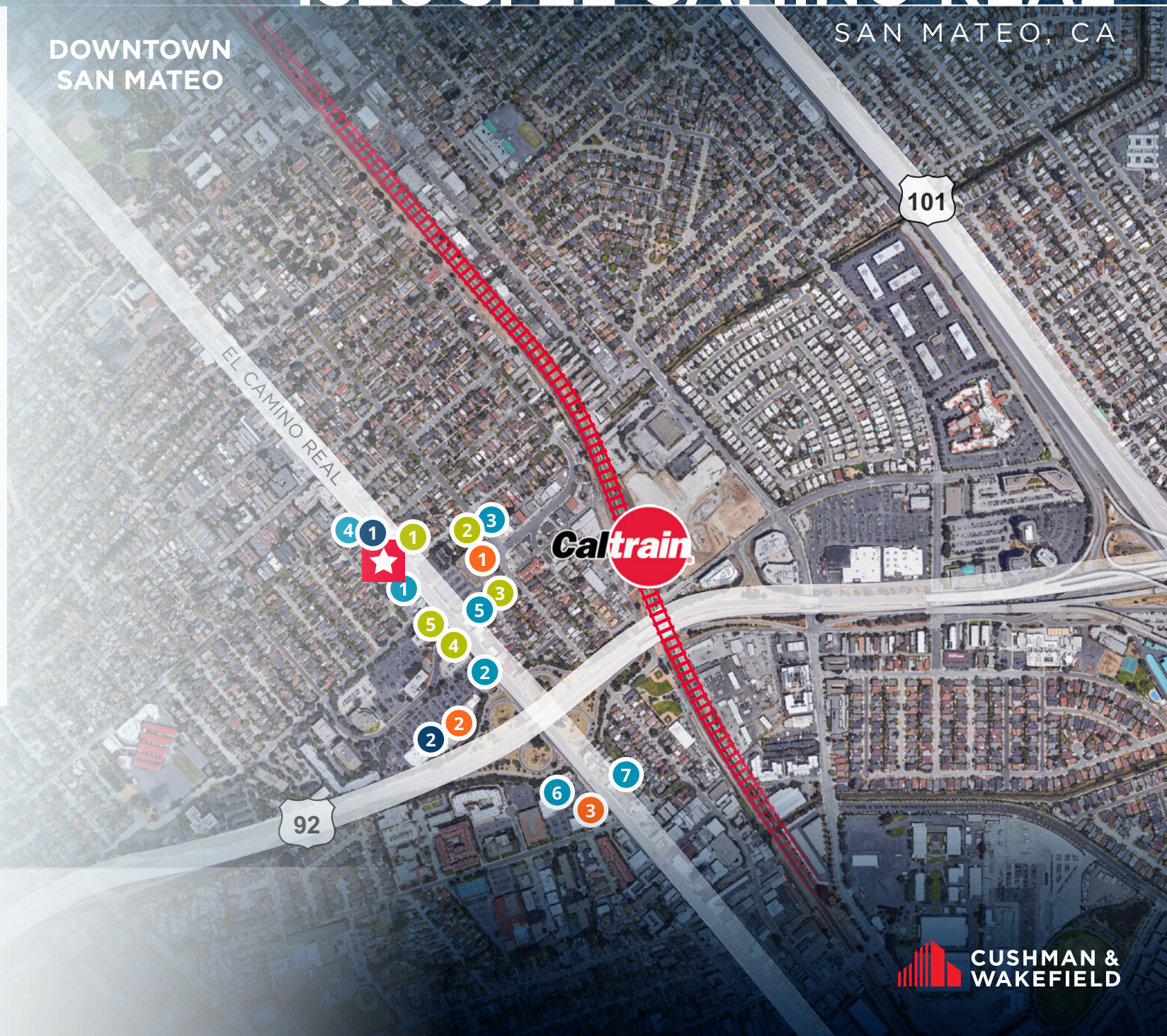
FITNESS

- 1 Bikram Hot Yoga
- 2 24 Hour Fitness

BANKS

- 1 San Mateo Credit Union
- 2 California Bank & trust
- 3 Wells Fargo
- 4 Chase
- 5 California Bank & Trust

DOWNTOWN
SAN MATEO



Chris Blom

Director

+1 650 931 2210

chris.blom@cushwake.com

LIC #02031205

