

# 111 ANZA BLVD.

BURLINGAME, CA 94010

**AVAILABLE**  
CLASS A OFFICE SPACE  
±1,295 – ±7,125 RSF



HOME

HIGHLIGHTS

AVAILABLE

LOCATION

CONTACT US

For more information, please contact:

**Clarke Funkhouser**  
Senior Managing Director  
+1 650 619 5579  
[clarke.funkhouser@jll.com](mailto:clarke.funkhouser@jll.com)  
LIC #01252763

**Chris Blom**  
Director  
+1 650 931 2210  
[chris.blom@cushwake.com](mailto:chris.blom@cushwake.com)  
LIC #02031205

 **CUSHMAN & WAKEFIELD**  
[cushmanwakefield.com](https://cushmanwakefield.com)

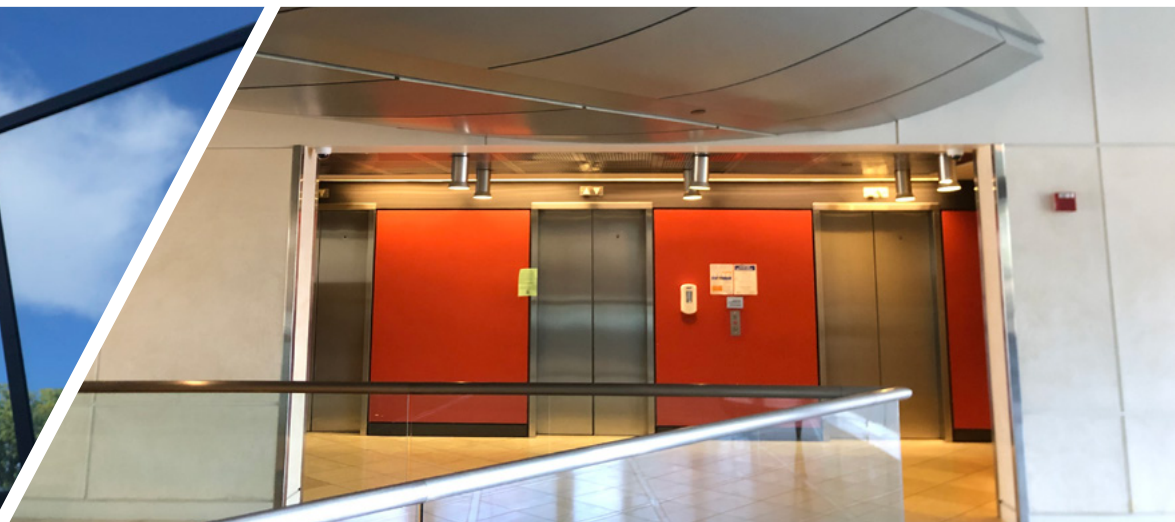
©2025 Cushman & Wakefield. All rights reserved. The information contained in this communication is strictly confidential. This information has been obtained from sources believed to be reliable but has not been verified. NO WARRANTY OR REPRESENTATION, EXPRESS OR IMPLIED, IS MADE AS TO THE CONDITION OF THE PROPERTY (OR PROPERTIES) REFERENCED HEREIN OR AS TO THE ACCURACY OR COMPLETENESS OF THE INFORMATION CONTAINED HEREIN, AND SAME IS SUBMITTED SUBJECT TO ERRORS, OMISSIONS, CHANGE OF PRICE, RENTAL OR OTHER CONDITIONS, WITHDRAWAL WITHOUT NOTICE, AND TO ANY SPECIAL LISTING CONDITIONS IMPOSED BY THE PROPERTY OWNER(S). ANY PROJECTIONS, OPINIONS OR ESTIMATES ARE SUBJECT TO UNCERTAINTY AND DO NOT SIGNIFY CURRENT OR FUTURE PROPERTY PERFORMANCE. COE-PM-West-06.20.2025

# 111 Anza Blvd. Burlingame, California

[HOME](#)[HIGHLIGHTS](#)[AVAILABLE](#)[LOCATION](#)[CONTACT US](#)

## PROPERTY HIGHLIGHTS

- Class A Building
- Remodeled Lobby & Corridors
- Workout Room & Showers
- Gigi's Café Onsite -Included in Yelp's Top 100 Places to Eat
- Peninsula's First Solar Office Building
- Covered Parking
- Available Now
- Call to Tour



For more information, please contact:

**Clarke Funkhouser**  
**Senior Managing Director**  
**+1 650 619 5579**  
**clarke.funkhouser@jll.com**  
LIC #01252763

**Chris Blom**  
**Director**  
**+1 650 931 2210**  
**chris.blom@cushwake.com**  
LIC #02031205

 **CUSHMAN & WAKEFIELD**  
cushmanwakefield.com




©2025 Cushman & Wakefield. All rights reserved. The information contained in this communication is strictly confidential. This information has been obtained from sources believed to be reliable but has not been verified. NO WARRANTY OR REPRESENTATION, EXPRESS OR IMPLIED, IS MADE AS TO THE CONDITION OF THE PROPERTY (OR PROPERTIES) REFERENCED HEREIN OR AS TO THE ACCURACY OR COMPLETENESS OF THE INFORMATION CONTAINED HEREIN, AND SAME IS SUBMITTED SUBJECT TO ERRORS, OMISSIONS, CHANGE OF PRICE, RENTAL OR OTHER CONDITIONS, WITHDRAWAL WITHOUT NOTICE, AND TO ANY SPECIAL LISTING CONDITIONS IMPOSED BY THE PROPERTY OWNER(S). ANY PROJECTIONS, OPINIONS OR ESTIMATES ARE SUBJECT TO UNCERTAINTY AND DO NOT SIGNIFY CURRENT OR FUTURE PROPERTY PERFORMANCE. COE-PM-West-06.20.2025

# 111 Anza Blvd. Burlingame, California

[HOME](#)[HIGHLIGHTS](#)[AVAILABLE](#)[LOCATION](#)[CONTACT US](#)

## AVAILABLE SUITES

Click Suite Number to View Floor Plan

Suite #	RSF	Available Date	Virtual Tour
<a href="#">202</a>	±1,805	Available Now	
<a href="#">304</a>	±2,176	Available Now	
<a href="#">320</a>	±2,098	Available Now	-
<a href="#">334</a>	±2,611	Available Now	-
<a href="#">336</a>	±1,578	Available Now	-
<a href="#">350</a>	±4,882	Available Now <i>*Can be divided to ±1,715 RSF &amp; ±3,162 RSF</i>	-
<a href="#">406</a> <a href="#">407</a>	±1,744 ±1,930	Available Now <i>*Can be combined for ±3,674 RSF and/or combined with Suite 411 for ±7,125 RSF</i>	Suite 407 
<a href="#">411</a>	±3,451	Available Now <i>*Can Be Combined with Suite 406 &amp; Suite 407 for ±7,125 RSF or Divided to ±1,295 RSF</i>	-



For more information, please contact:

**Clarke Funkhouser**  
Senior Managing Director  
+1 650 619 5579  
[clarke.funkhouser@jll.com](mailto:clarke.funkhouser@jll.com)  
LIC #01252763

**Chris Blom**  
Director  
+1 650 931 2210  
[chris.blom@cushwake.com](mailto:chris.blom@cushwake.com)  
LIC #02031205



[cushmanwakefield.com](https://cushmanwakefield.com)

©2025 Cushman & Wakefield. All rights reserved. The information contained in this communication is strictly confidential. This information has been obtained from sources believed to be reliable but has not been verified. NO WARRANTY OR REPRESENTATION, EXPRESS OR IMPLIED, IS MADE AS TO THE CONDITION OF THE PROPERTY (OR PROPERTIES) REFERENCED HEREIN OR AS TO THE ACCURACY OR COMPLETENESS OF THE INFORMATION CONTAINED HEREIN, AND SAME IS SUBMITTED SUBJECT TO ERRORS, OMISSIONS, CHANGE OF PRICE, RENTAL OR OTHER CONDITIONS, WITHDRAWAL WITHOUT NOTICE, AND TO ANY SPECIAL LISTING CONDITIONS IMPOSED BY THE PROPERTY OWNER(S). ANY PROJECTIONS, OPINIONS OR ESTIMATES ARE SUBJECT TO UNCERTAINTY AND DO NOT SIGNIFY CURRENT OR FUTURE PROPERTY PERFORMANCE. COE-PM-West-06.20.2025

# 111 Anza Blvd. Burlingame, California

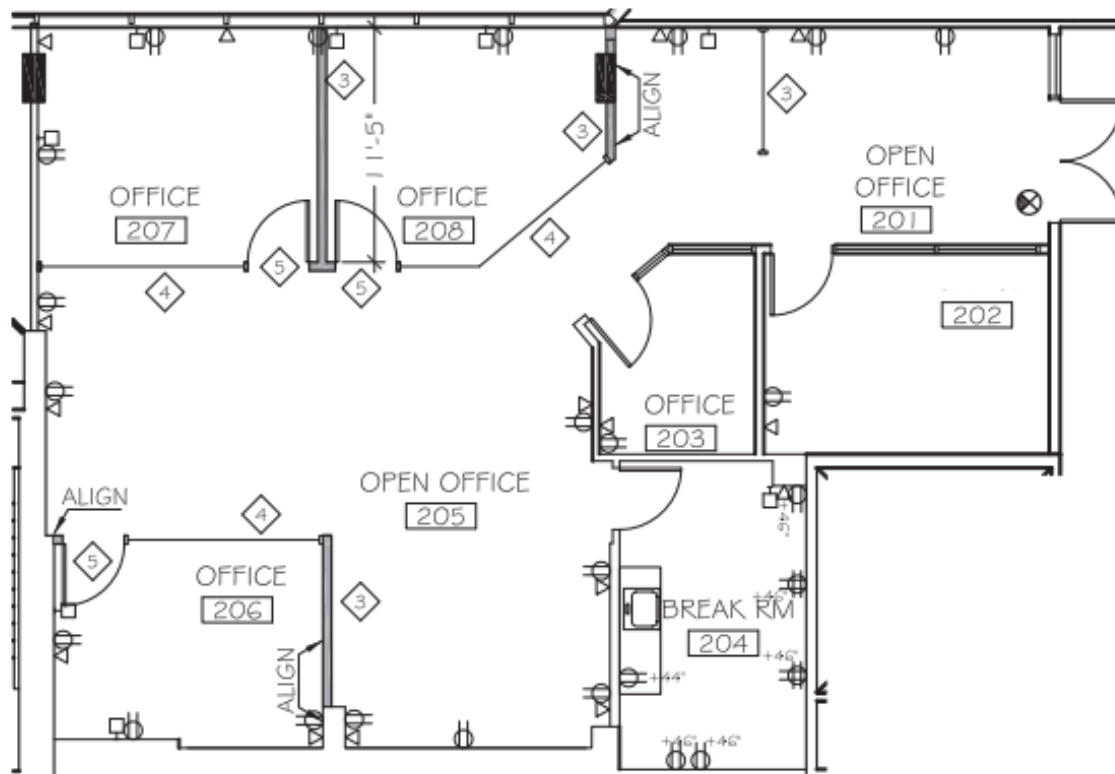
[HOME](#)[HIGHLIGHTS](#)[AVAILABLE](#)[LOCATION](#)[CONTACT US](#)

## AVAILABLE

**Suite 202 | ±1,805 RSF**

**Available Now**

- Market Ready Suite



For more information, please contact:

**Clarke Funkhouser**  
Senior Managing Director  
+1 650 619 5579  
[clarke.funkhouser@jll.com](mailto:clarke.funkhouser@jll.com)  
LIC #01252763

**Chris Blom**  
Director  
+1 650 931 2210  
[chris.blom@cushwake.com](mailto:chris.blom@cushwake.com)  
LIC #02031205



[cushmanwakefield.com](https://cushmanwakefield.com)

©2025 Cushman & Wakefield. All rights reserved. The information contained in this communication is strictly confidential. This information has been obtained from sources believed to be reliable but has not been verified. NO WARRANTY OR REPRESENTATION, EXPRESS OR IMPLIED, IS MADE AS TO THE CONDITION OF THE PROPERTY (OR PROPERTIES) REFERENCED HEREIN OR AS TO THE ACCURACY OR COMPLETENESS OF THE INFORMATION CONTAINED HEREIN, AND SAME IS SUBMITTED SUBJECT TO ERRORS, OMISSIONS, CHANGE OF PRICE, RENTAL OR OTHER CONDITIONS, WITHDRAWAL WITHOUT NOTICE, AND TO ANY SPECIAL LISTING CONDITIONS IMPOSED BY THE PROPERTY OWNER(S). ANY PROJECTIONS, OPINIONS OR ESTIMATES ARE SUBJECT TO UNCERTAINTY AND DO NOT SIGNIFY CURRENT OR FUTURE PROPERTY PERFORMANCE. COE-PM-West-06.20.2025

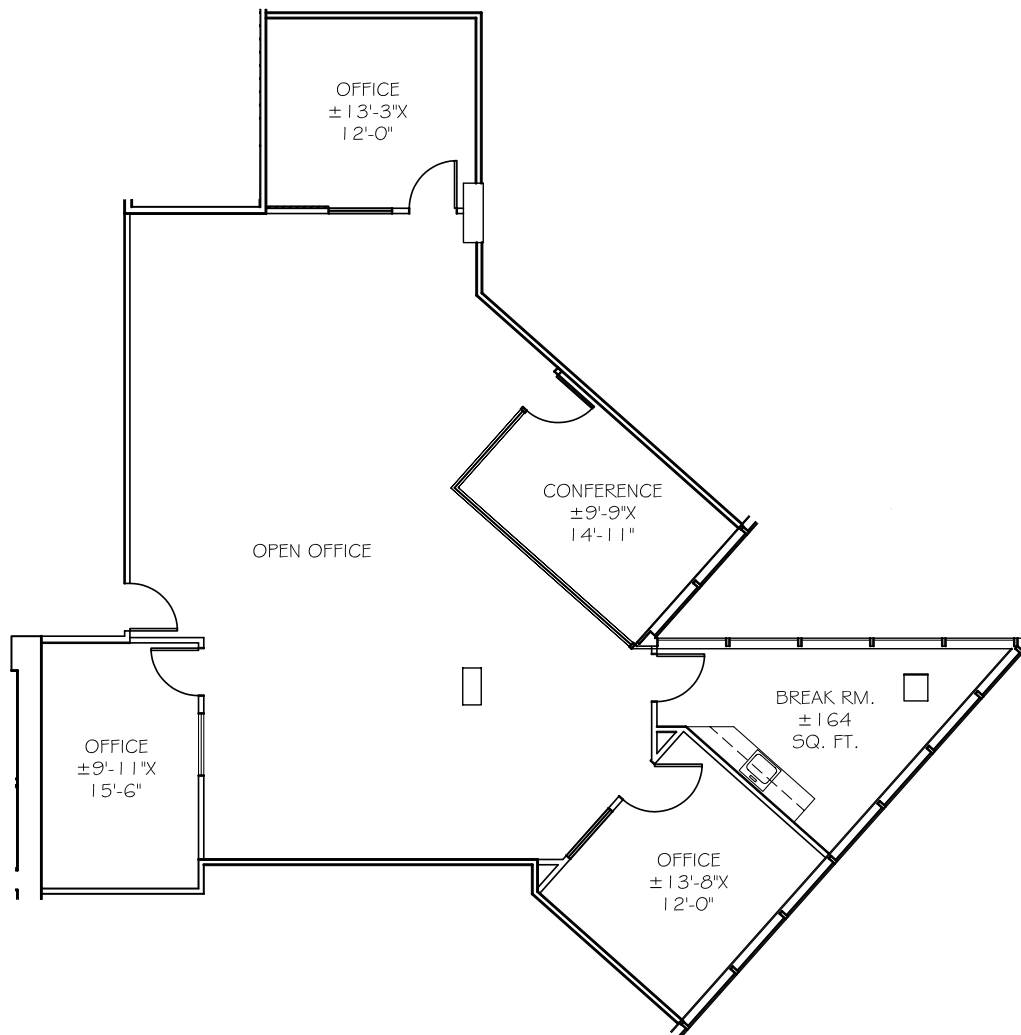
# 111 Anza Blvd. Burlingame, California

[HOME](#)[HIGHLIGHTS](#)[AVAILABLE](#)[LOCATION](#)[CONTACT US](#)

## AVAILABLE

**Suite 304 | ±2,176 RSF**

**Available Now**



For more information, please contact:

**Clarke Funkhouser**  
Senior Managing Director  
+1 650 619 5579  
[clarke.funkhouser@jll.com](mailto:clarke.funkhouser@jll.com)  
LIC #01252763

**Chris Blom**  
Director  
+1 650 931 2210  
[chris.blom@cushwake.com](mailto:chris.blom@cushwake.com)  
LIC #02031205



[cushmanwakefield.com](https://cushmanwakefield.com)

©2025 Cushman & Wakefield. All rights reserved. The information contained in this communication is strictly confidential. This information has been obtained from sources believed to be reliable but has not been verified. NO WARRANTY OR REPRESENTATION, EXPRESS OR IMPLIED, IS MADE AS TO THE CONDITION OF THE PROPERTY (OR PROPERTIES) REFERENCED HEREIN OR AS TO THE ACCURACY OR COMPLETENESS OF THE INFORMATION CONTAINED HEREIN, AND SAME IS SUBMITTED SUBJECT TO ERRORS, OMISSIONS, CHANGE OF PRICE, RENTAL OR OTHER CONDITIONS, WITHDRAWAL WITHOUT NOTICE, AND TO ANY SPECIAL LISTING CONDITIONS IMPOSED BY THE PROPERTY OWNER(S). ANY PROJECTIONS, OPINIONS OR ESTIMATES ARE SUBJECT TO UNCERTAINTY AND DO NOT SIGNIFY CURRENT OR FUTURE PROPERTY PERFORMANCE. COE-PM-West-06.20.2025

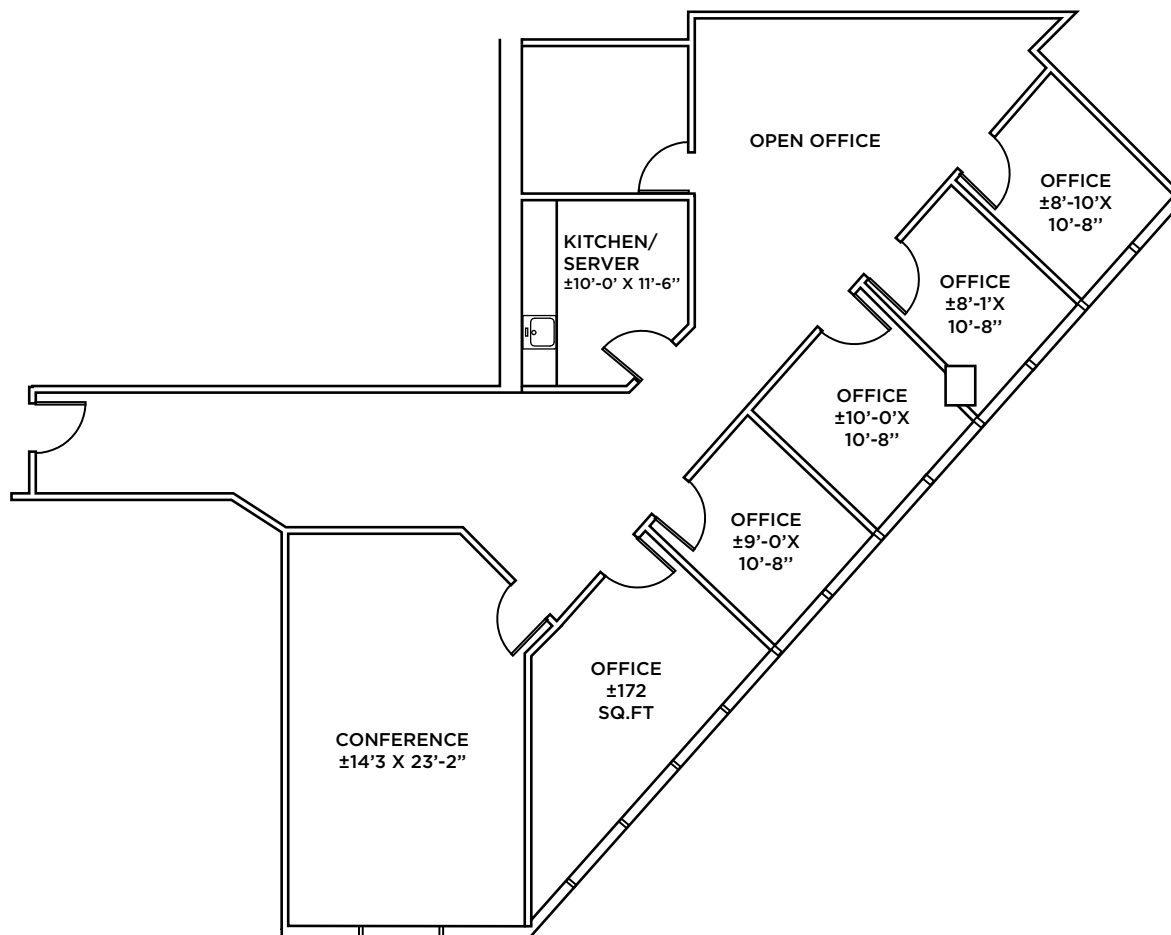
# 111 Anza Blvd. Burlingame, California

[HOME](#)[HIGHLIGHTS](#)[AVAILABLE](#)[LOCATION](#)[CONTACT US](#)

## AVAILABLE

**Suite 320 | ±2,098 RSF**

**Available Now**



For more information, please contact:

**Clarke Funkhouser**  
**Senior Managing Director**  
**+1 650 619 5579**  
**clarke.funkhouser@jll.com**  
LIC #01252763

**Chris Blom**  
**Director**  
**+1 650 931 2210**  
**chris.blom@cushwake.com**  
LIC #02031205



**cushmanwakefield.com**

©2025 Cushman & Wakefield. All rights reserved. The information contained in this communication is strictly confidential. This information has been obtained from sources believed to be reliable but has not been verified. NO WARRANTY OR REPRESENTATION, EXPRESS OR IMPLIED, IS MADE AS TO THE CONDITION OF THE PROPERTY (OR PROPERTIES) REFERENCED HEREIN OR AS TO THE ACCURACY OR COMPLETENESS OF THE INFORMATION CONTAINED HEREIN, AND SAME IS SUBMITTED SUBJECT TO ERRORS, OMISSIONS, CHANGE OF PRICE, RENTAL OR OTHER CONDITIONS, WITHDRAWAL WITHOUT NOTICE, AND TO ANY SPECIAL LISTING CONDITIONS IMPOSED BY THE PROPERTY OWNER(S). ANY PROJECTIONS, OPINIONS OR ESTIMATES ARE SUBJECT TO UNCERTAINTY AND DO NOT SIGNIFY CURRENT OR FUTURE PROPERTY PERFORMANCE. COE-PM-West-06.20.2025

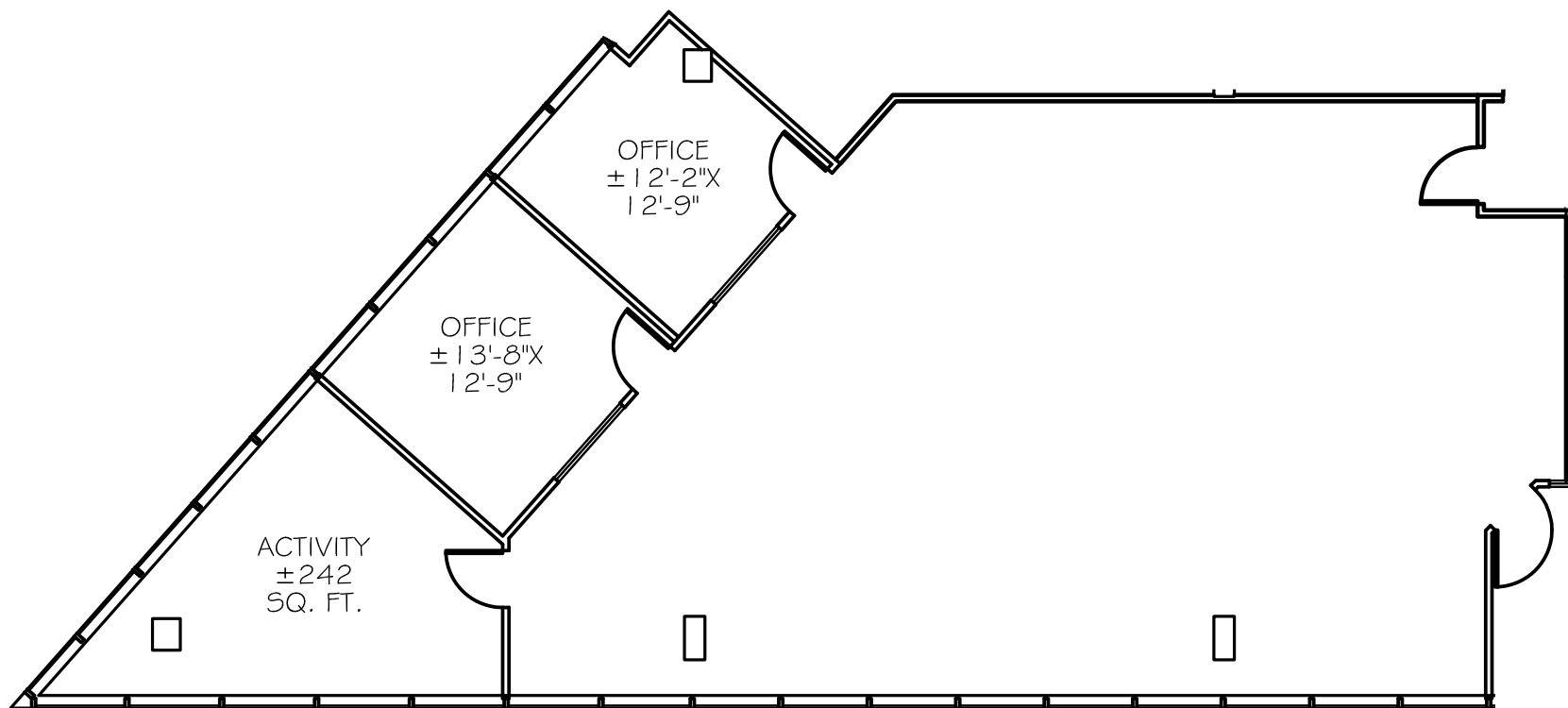
# 111 Anza Blvd. Burlingame, California

[HOME](#)[HIGHLIGHTS](#)[AVAILABLE](#)[LOCATION](#)[CONTACT US](#)

## AVAILABLE

**Suite 334 | ±2,611 RSF**

**Available Now**



For more information, please contact:

**Clarke Funkhouser**  
Senior Managing Director  
+1 650 619 5579  
[clarke.funkhouser@jll.com](mailto:clarke.funkhouser@jll.com)  
LIC #01252763

**Chris Blom**  
Director  
+1 650 931 2210  
[chris.blom@cushwake.com](mailto:chris.blom@cushwake.com)  
LIC #02031205



[cushmanwakefield.com](http://cushmanwakefield.com)

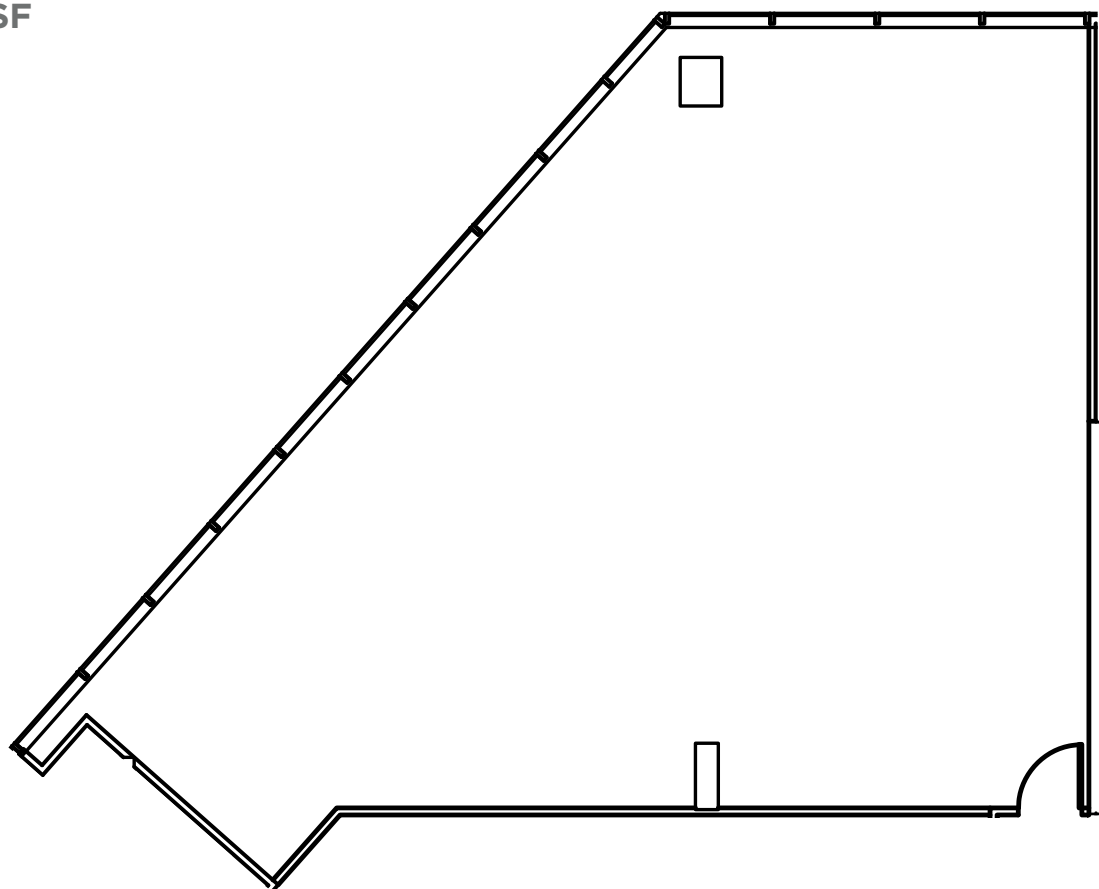
# 111 Anza Blvd. Burlingame, California

[HOME](#)[HIGHLIGHTS](#)[AVAILABLE](#)[LOCATION](#)[CONTACT US](#)

## AVAILABLE

**Suite 336 | ±1,578 RSF**

**Available Now**



For more information, please contact:

**Clarke Funkhouser**  
Senior Managing Director  
+1 650 619 5579  
[clarke.funkhouser@jll.com](mailto:clarke.funkhouser@jll.com)  
LIC #01252763

**Chris Blom**  
Director  
+1 650 931 2210  
[chris.blom@cushwake.com](mailto:chris.blom@cushwake.com)  
LIC #02031205



[cushmanwakefield.com](https://cushmanwakefield.com)

©2025 Cushman & Wakefield. All rights reserved. The information contained in this communication is strictly confidential. This information has been obtained from sources believed to be reliable but has not been verified. NO WARRANTY OR REPRESENTATION, EXPRESS OR IMPLIED, IS MADE AS TO THE CONDITION OF THE PROPERTY (OR PROPERTIES) REFERENCED HEREIN OR AS TO THE ACCURACY OR COMPLETENESS OF THE INFORMATION CONTAINED HEREIN, AND SAME IS SUBMITTED SUBJECT TO ERRORS, OMISSIONS, CHANGE OF PRICE, RENTAL OR OTHER CONDITIONS, WITHDRAWAL WITHOUT NOTICE, AND TO ANY SPECIAL LISTING CONDITIONS IMPOSED BY THE PROPERTY OWNER(S). ANY PROJECTIONS, OPINIONS OR ESTIMATES ARE SUBJECT TO UNCERTAINTY AND DO NOT SIGNIFY CURRENT OR FUTURE PROPERTY PERFORMANCE. COE-PM-West-06.20.2025

# 111 Anza Blvd. Burlingame, California

[HOME](#)[HIGHLIGHTS](#)[AVAILABLE](#)[LOCATION](#)[CONTACT US](#)

## AVAILABLE

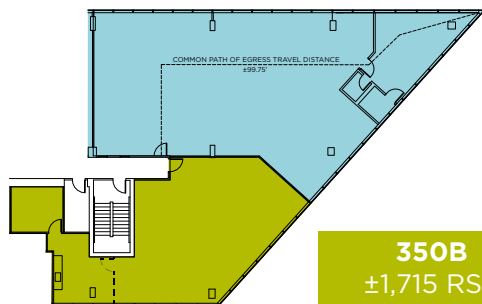
**Suite 350 | ±4,882 RSF**

**Available Now**

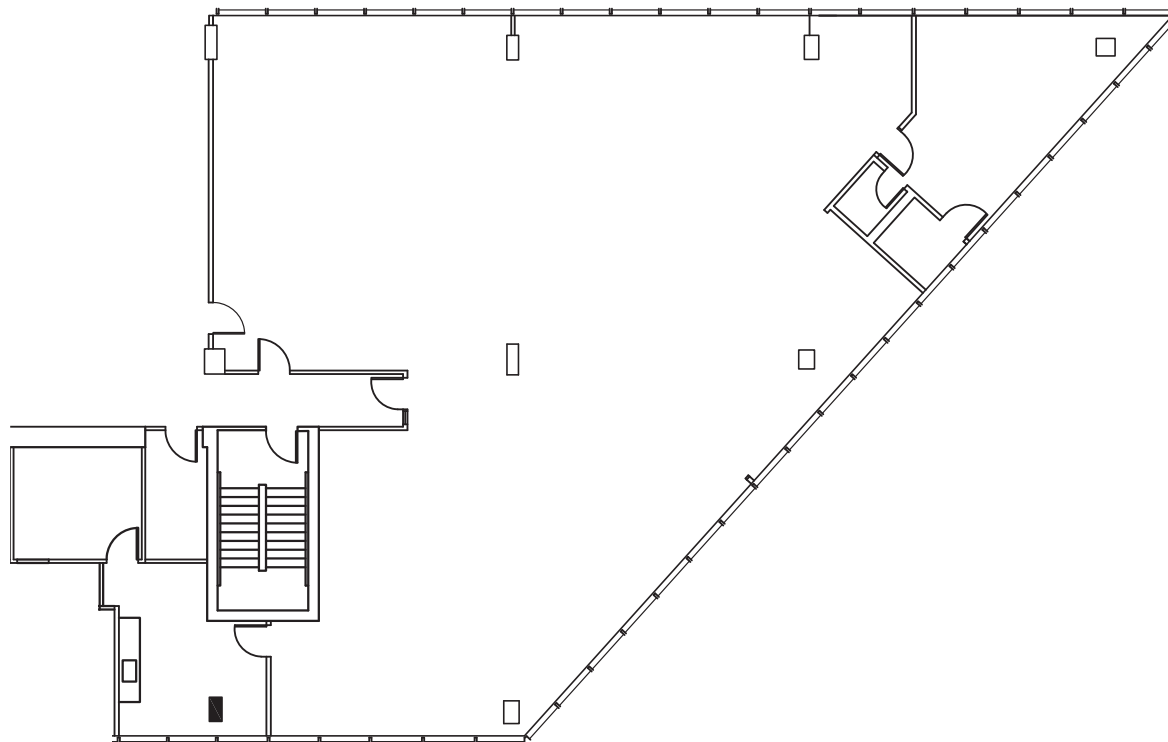
*\*Can be divided per plan below*

**\*Suite 350A & 350B Divided**

**350A**  
±3,162 RSF



**350B**  
±1,715 RSF



For more information, please contact:

**Clarke Funkhouser**  
Senior Managing Director  
+1 650 619 5579  
[clarke.funkhouser@jll.com](mailto:clarke.funkhouser@jll.com)  
LIC #01252763

**Chris Blom**  
Director  
+1 650 931 2210  
[chris.blom@cushwake.com](mailto:chris.blom@cushwake.com)  
LIC #02031205



[cushmanwakefield.com](https://cushmanwakefield.com)

©2025 Cushman & Wakefield. All rights reserved. The information contained in this communication is strictly confidential. This information has been obtained from sources believed to be reliable but has not been verified. NO WARRANTY OR REPRESENTATION, EXPRESS OR IMPLIED, IS MADE AS TO THE CONDITION OF THE PROPERTY (OR PROPERTIES) REFERENCED HEREIN OR AS TO THE ACCURACY OR COMPLETENESS OF THE INFORMATION CONTAINED HEREIN, AND SAME IS SUBMITTED SUBJECT TO ERRORS, OMISSIONS, CHANGE OF PRICE, RENTAL OR OTHER CONDITIONS, WITHDRAWAL WITHOUT NOTICE, AND TO ANY SPECIAL LISTING CONDITIONS IMPOSED BY THE PROPERTY OWNER(S). ANY PROJECTIONS, OPINIONS OR ESTIMATES ARE SUBJECT TO UNCERTAINTY AND DO NOT SIGNIFY CURRENT OR FUTURE PROPERTY PERFORMANCE. COE-PM-West-06.20.2025

# 111 Anza Blvd. Burlingame, California

[HOME](#)[HIGHLIGHTS](#)[AVAILABLE](#)[LOCATION](#)[CONTACT US](#)

## AVAILABLE

**Suite 406 | ±1,744 RSF**  
**Suite 407 | ±1,930 RSF**

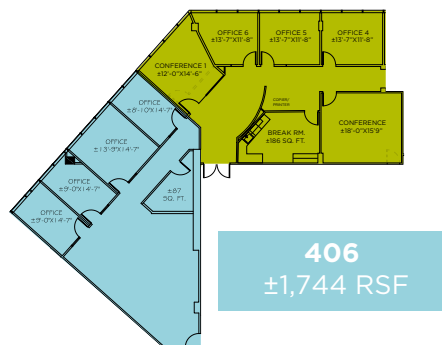
**Available Now**

*\*Can be combined for ±3,674 RSF*

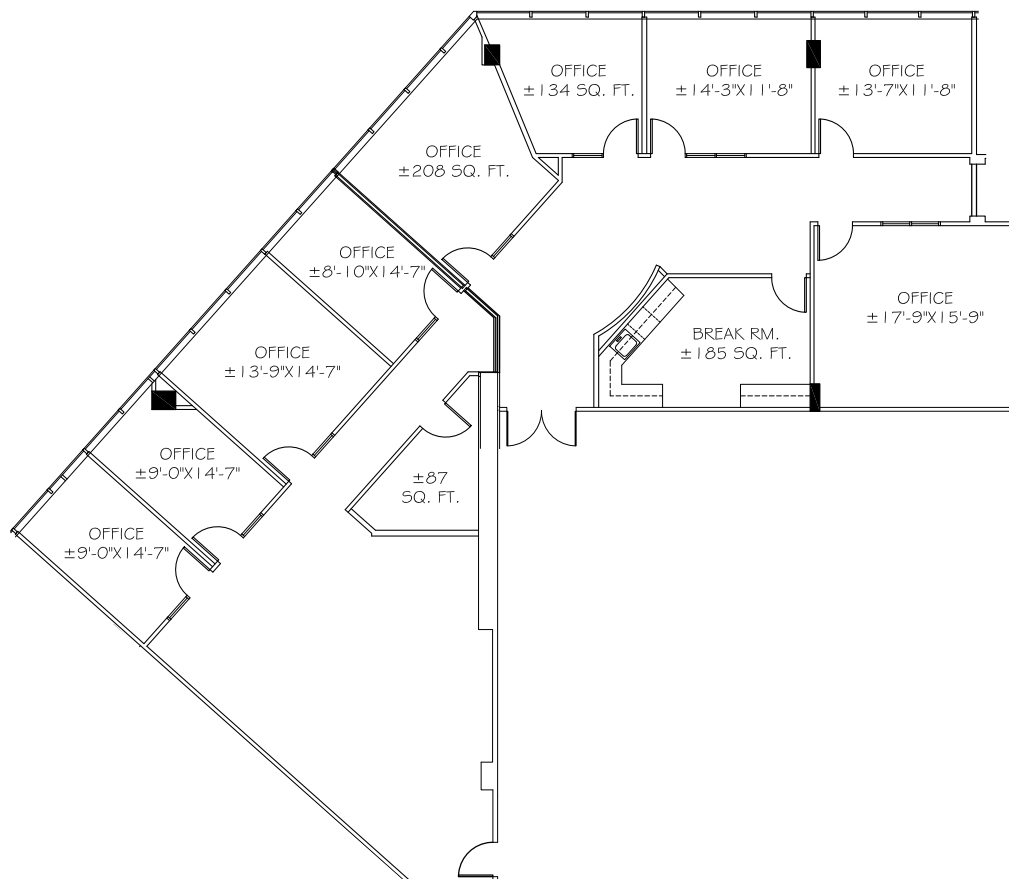
*\*Can be combined with Suite 411 for ±7,125 RSF*

### Suite 406 & 407 Combined

**407**  
±1,930 RSF



**406**  
±1,744 RSF



For more information, please contact:

**Clarke Funkhouser**  
Senior Managing Director  
+1 650 619 5579  
clarke.funkhouser@jll.com  
LIC #01252763

**Chris Blom**  
Director  
+1 650 931 2210  
chris.blom@cushwake.com  
LIC #02031205



cushmanwakefield.com

# 111 Anza Blvd. Burlingame, California

[HOME](#)[HIGHLIGHTS](#)[AVAILABLE](#)[LOCATION](#)[CONTACT US](#)

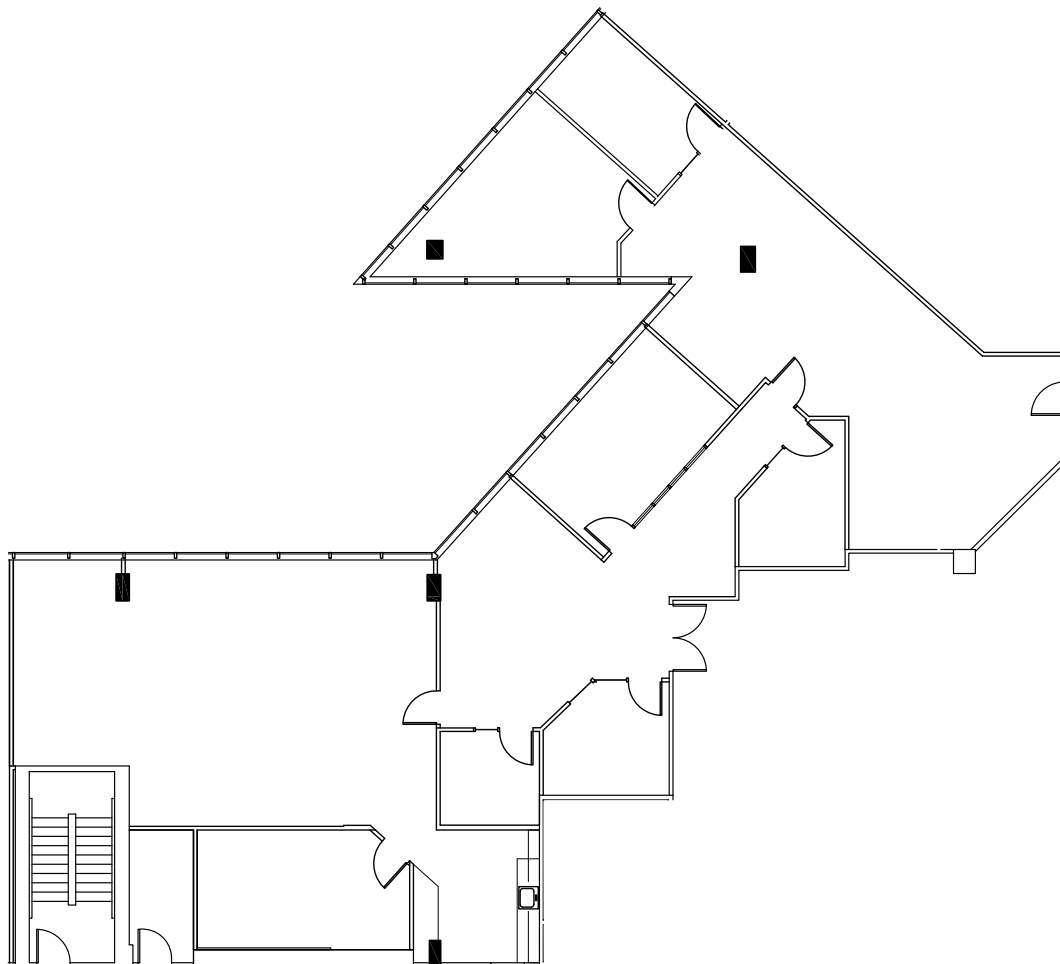
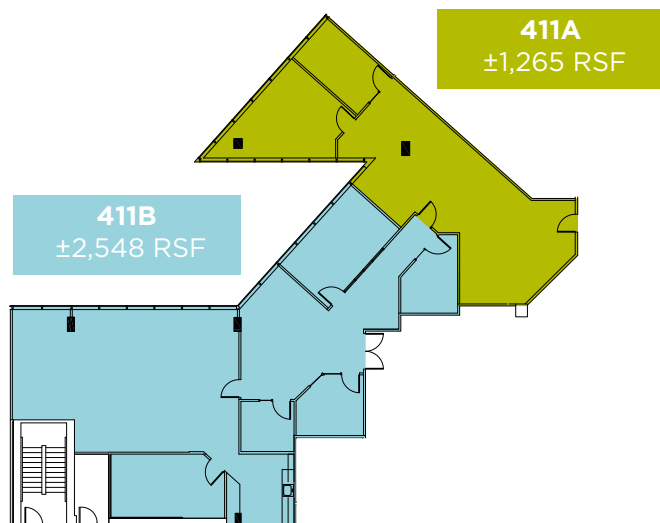
## AVAILABLE

**Suite 411 | ±3,451 RSF**

**Available Now**

*\*Can be combined with Suite 406 & Suite 407 for ±7,125 SF*

**Suite 411A & 411B Divided**



For more information, please contact:

**Clarke Funkhouser**  
Senior Managing Director  
+1 650 619 5579  
[clarke.funkhouser@jll.com](mailto:clarke.funkhouser@jll.com)  
LIC #01252763

**Chris Blom**  
Director  
+1 650 931 2210  
[chris.blom@cushwake.com](mailto:chris.blom@cushwake.com)  
LIC #02031205



[cushmanwakefield.com](http://cushmanwakefield.com)

©2025 Cushman & Wakefield. All rights reserved. The information contained in this communication is strictly confidential. This information has been obtained from sources believed to be reliable but has not been verified. NO WARRANTY OR REPRESENTATION, EXPRESS OR IMPLIED, IS MADE AS TO THE CONDITION OF THE PROPERTY (OR PROPERTIES) REFERENCED HEREIN OR AS TO THE ACCURACY OR COMPLETENESS OF THE INFORMATION CONTAINED HEREIN, AND SAME IS SUBMITTED SUBJECT TO ERRORS, OMISSIONS, CHANGE OF PRICE, RENTAL OR OTHER CONDITIONS, WITHDRAWAL WITHOUT NOTICE, AND TO ANY SPECIAL LISTING CONDITIONS IMPOSED BY THE PROPERTY OWNER(S). ANY PROJECTIONS, OPINIONS OR ESTIMATES ARE SUBJECT TO UNCERTAINTY AND DO NOT SIGNIFY CURRENT OR FUTURE PROPERTY PERFORMANCE. COE-PM-West-06.20.2025

# 111 Anza Blvd. Burlingame, California

[HOME](#)[HIGHLIGHTS](#)[AVAILABLE](#)[LOCATION](#)[CONTACT US](#)

## LEGEND

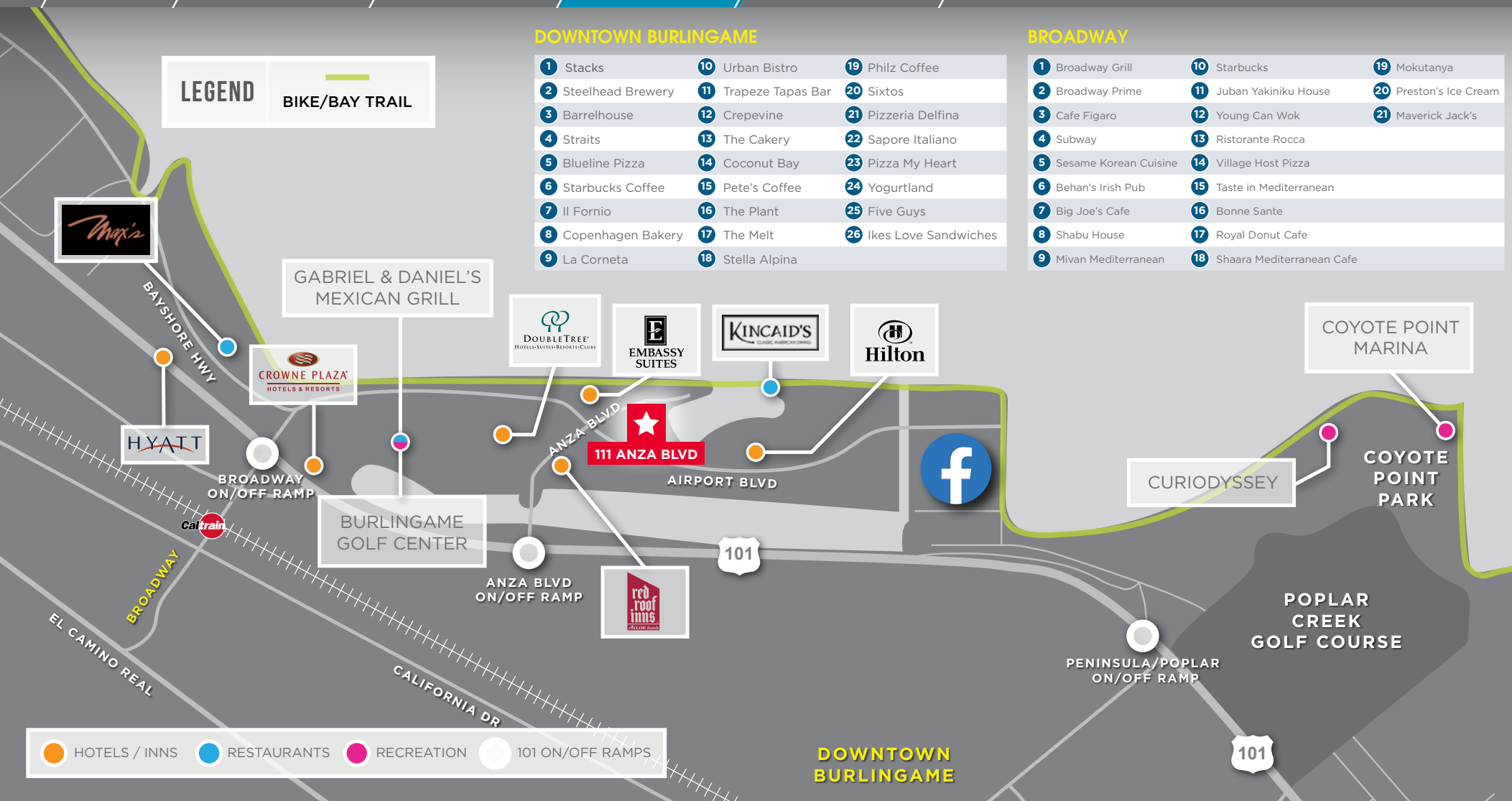
BIKE/BAY TRAIL

### DOWNTOWN BURLINGAME

- |                     |                      |                         |
|---------------------|----------------------|-------------------------|
| 1 Stacks            | 10 Urban Bistro      | 19 Philz Coffee         |
| 2 Steelhead Brewery | 11 Trapeze Tapas Bar | 20 Sixtos               |
| 3 Barrelhouse       | 12 Crepevine         | 21 Pizzeria Delfina     |
| 4 Straits           | 13 The Cakery        | 22 Sapore Italiano      |
| 5 Blueline Pizza    | 14 Coconut Bay       | 23 Pizza My Heart       |
| 6 Starbucks Coffee  | 15 Pete's Coffee     | 24 Yogurtland           |
| 7 Il Forno          | 16 The Plant         | 25 Five Guys            |
| 8 Copenhagen Bakery | 17 The Melt          | 26 Ikes Love Sandwiches |
| 9 La Corneta        | 18 Stella Alpina     |                         |

### BROADWAY

- |                         |                              |                        |
|-------------------------|------------------------------|------------------------|
| 1 Broadway Grill        | 10 Starbucks                 | 19 Mokutanya           |
| 2 Broadway Prime        | 11 Juban Yakiniku House      | 20 Preston's Ice Cream |
| 3 Cafe Figaro           | 12 Young Can Wok             | 21 Maverick Jack's     |
| 4 Subway                | 13 Ristorante Rocca          |                        |
| 5 Sesame Korean Cuisine | 14 Village Host Pizza        |                        |
| 6 Behan's Irish Pub     | 15 Taste in Mediterranean    |                        |
| 7 Big Joe's Cafe        | 16 Bonne Sante               |                        |
| 8 Shabu House           | 17 Royal Donut Cafe          |                        |
| 9 Mivan Mediterranean   | 18 Shaara Mediterranean Cafe |                        |



For more information, please contact:

**Clarke Funkhouser**  
Senior Managing Director  
+1 650 619 5579  
clarke.funkhouser@jll.com  
LIC #01252763

**Chris Blom**  
Director  
+1 650 931 2210  
chris.blom@cushwake.com  
LIC #02031205

**CUSHMAN & WAKEFIELD**  
cushmanwakefield.com

©2025 Cushman & Wakefield. All rights reserved. The information contained in this communication is strictly confidential. This information has been obtained from sources believed to be reliable but has not been verified. NO WARRANTY OR REPRESENTATION, EXPRESS OR IMPLIED, IS MADE AS TO THE CONDITION OF THE PROPERTY (OR PROPERTIES) REFERENCED HEREIN OR AS TO THE ACCURACY OR COMPLETENESS OF THE INFORMATION CONTAINED HEREIN, AND SAME IS SUBMITTED SUBJECT TO ERRORS, OMISSIONS, CHANGE OF PRICE, RENTAL OR OTHER CONDITIONS, WITHDRAWAL WITHOUT NOTICE, AND TO ANY SPECIAL LISTING CONDITIONS IMPOSED BY THE PROPERTY OWNER(S). ANY PROJECTIONS, OPINIONS OR ESTIMATES ARE SUBJECT TO UNCERTAINTY AND DO NOT SIGNIFY CURRENT OR FUTURE PROPERTY PERFORMANCE. COE-PM-West-06.20.2025

# 111 Anza Blvd. Burlingame, California

[HOME](#)[HIGHLIGHTS](#)[AVAILABLE](#)[LOCATION](#)[CONTACT US](#)

## CONTACT US

**Clarke Funkhouser**  
**Senior Managing Director**  
**+1 650 619 5579**  
**[clarke.funkhouser@jll.com](mailto:clarke.funkhouser@jll.com)**  
LIC #01252763

**Chris Blom**  
**Director**  
**+1 650 931 2210**  
**[chris.blom@cushwake.com](mailto:chris.blom@cushwake.com)**  
LIC #02031205

## About Cushman & Wakefield

Cushman & Wakefield is a global leader in commercial real estate services, helping clients transform the way people work, shop, and live. The firm's 43,000 employees in more than 60 countries provide deep local and global insights that create significant value for occupiers and investors around the world. Cushman & Wakefield is among the largest commercial real estate services firms with revenues of \$5 billion across core services of agency leasing, asset services, capital markets, facility services (branded C&W Services), global occupier services, investment management (branded DTZ Investors), project & development services, tenant representation and valuation & advisory. To learn more, visit [www.cushmanwakefield.com](http://www.cushmanwakefield.com) or follow @CushWake on Twitter.



For more information, please contact:

**Clarke Funkhouser**  
**Senior Managing Director**  
**+1 650 619 5579**  
**[clarke.funkhouser@jll.com](mailto:clarke.funkhouser@jll.com)**  
LIC #01252763

**Chris Blom**  
**Director**  
**+1 650 931 2210**  
**[chris.blom@cushwake.com](mailto:chris.blom@cushwake.com)**  
LIC #02031205



[cushmanwakefield.com](http://cushmanwakefield.com)

©2025 Cushman & Wakefield. All rights reserved. The information contained in this communication is strictly confidential. This information has been obtained from sources believed to be reliable but has not been verified. NO WARRANTY OR REPRESENTATION, EXPRESS OR IMPLIED, IS MADE AS TO THE CONDITION OF THE PROPERTY (OR PROPERTIES) REFERENCED HEREIN OR AS TO THE ACCURACY OR COMPLETENESS OF THE INFORMATION CONTAINED HEREIN, AND SAME IS SUBMITTED SUBJECT TO ERRORS, OMISSIONS, CHANGE OF PRICE, RENTAL OR OTHER CONDITIONS, WITHDRAWAL WITHOUT NOTICE, AND TO ANY SPECIAL LISTING CONDITIONS IMPOSED BY THE PROPERTY OWNER(S). ANY PROJECTIONS, OPINIONS OR ESTIMATES ARE SUBJECT TO UNCERTAINTY AND DO NOT SIGNIFY CURRENT OR FUTURE PROPERTY PERFORMANCE. COE-PM-West-06.20.2025