

AGGIE
SQUARE

Level Five

±33,233 RSF

OFFICE/LAB SPACE AVAILABLE



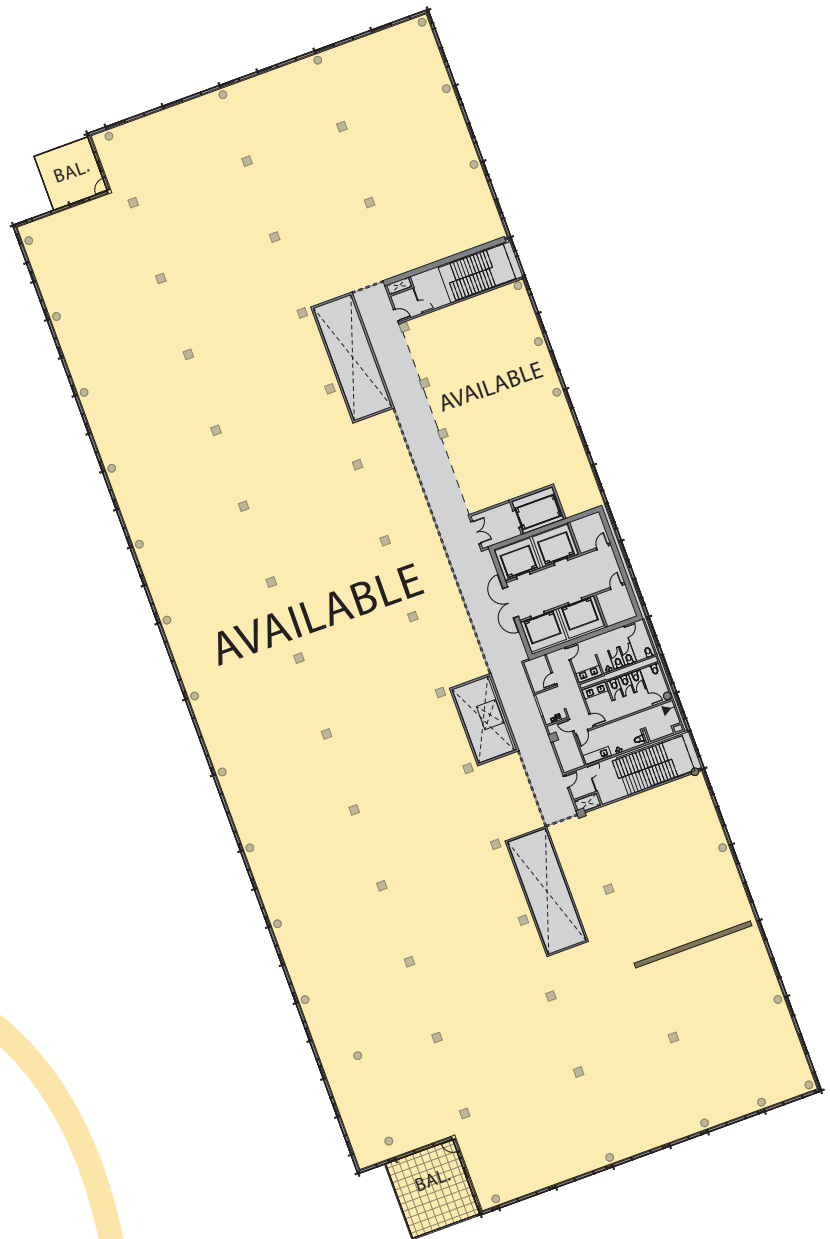
Retail



Common Space



Available Space



For more information, please contact:

Ron Thomas

Executive Managing Director

+1 916 288 4801

ron.thomas@cushwake.com

LIC #01193241

Kris Kalmbach

Managing Director

+1 916 288 4421

kris.kalmbach@cushwake.com

LIC #01436668

Bruce Hohenhaus

Executive Director

+ 916 288 4804

bruce.hohenhaus@cushwake.com

LIC #00677545



WEXFORD
SCIENCE+TECHNOLOGY