

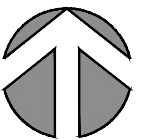
Area Analysis performed in accordance with ANSI/BOMA Z65.1 - 2017 Method A Standard.

Project: C21-882

Date	Action
8/16/2021	Final Site Measurement
C21-882	

**Client:**  
Stetz Commercial Properties

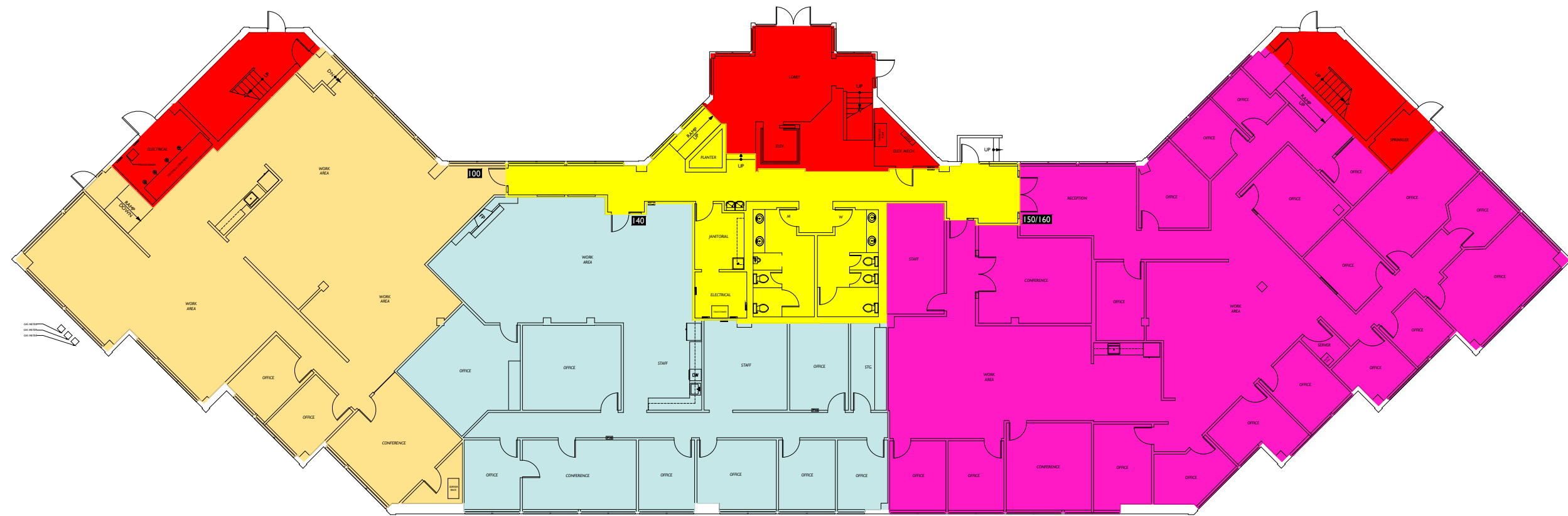
**Site:**  
Commercial  
371 NE Gilman Boulevard  
Issaquah, WA 98027



Lease Plan



Floor



Floor Summary	SQ. FT.
Total Rentable Area	14,554.02
Total Occupant Area	12,607.98
Load Factor	1.154350

Floor Service Area	1,404.80
Building Service Area	1,379.72
Total Vertical	0

Suite #	Occupant Area	Rentable Area
Suite 100	3,367.11	3,886.82
Suite 140	3,396.96	3,921.28
Suite 150/160	5,843.91	6,745.92



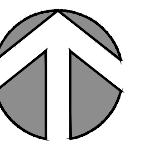
Area Analysis performed in accordance with ANSI/BOMA Z65.1 - 2017 Method A Standard.

Project: C21-882

Date	Action
8/16/2021	Final Site Measurement
C21-882	

**Client:**  
Stetz Commercial Properties

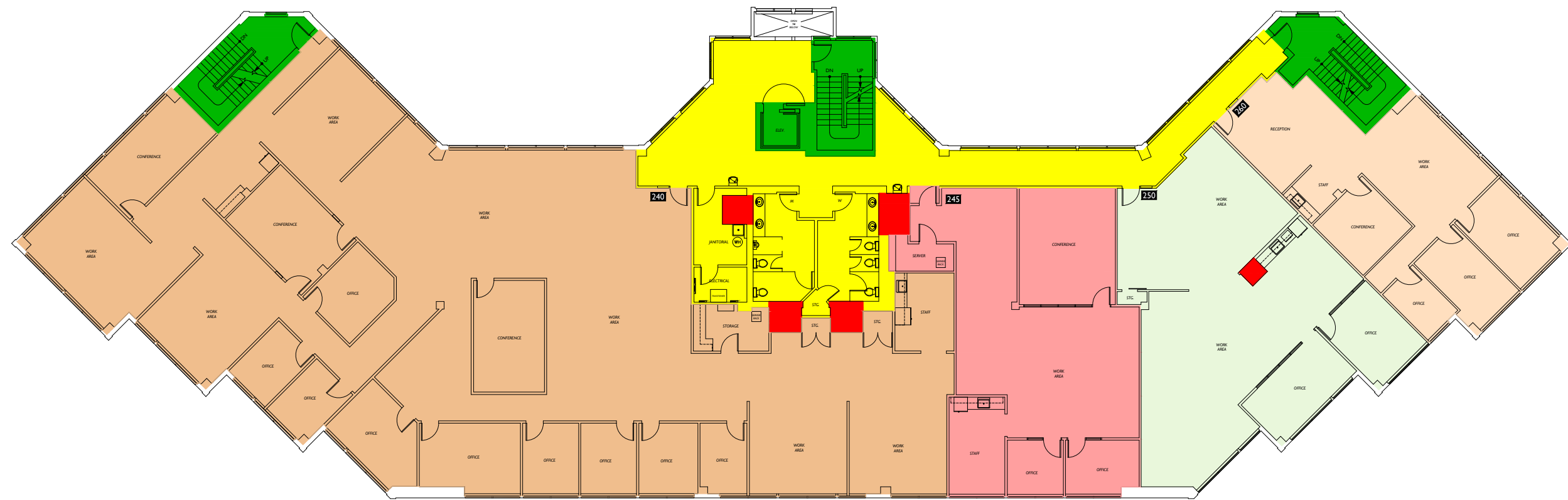
**Site:**  
Commercial  
371 NE Gilman Boulevard  
Issaquah, WA 98027



Lease Plan

2

Floor



Floor Summary	SQ. FT.
Total Rentable Area	14,961.11
Total Occupant Area	12,555.36
Load Factor	1.191611

Floor Service Area	1,849.37
Building Service Area	138.98
Total Vertical	816.46

Suite #	Occupant Area	Rentable Area
Suite 240	7,442.84	8,868.97
Suite 245	1,779.87	2,120.91
Suite 250	1,919.88	2,287.75
Suite 260	1,412.77	1,683.47



