



STANFORD PLACE III

a heightened

WORKPLACE

EXPERIENCE

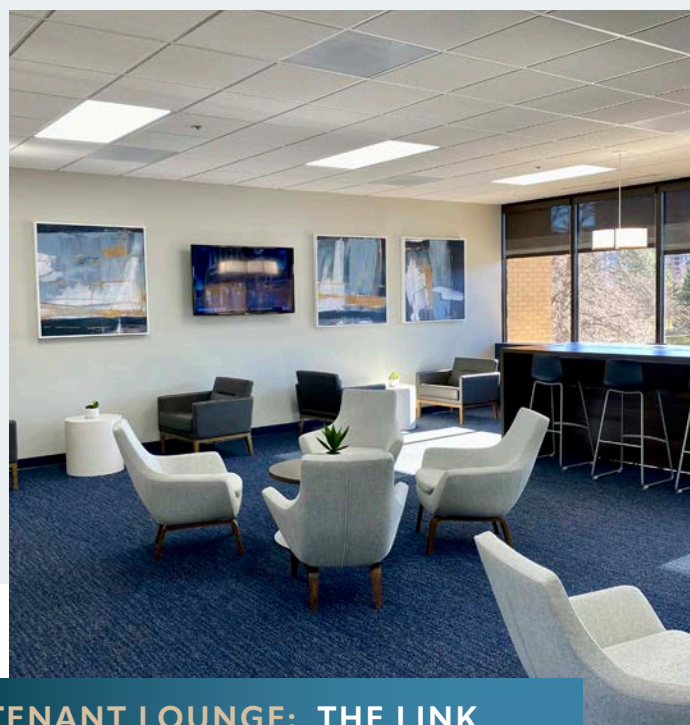
4582 S. ULSTER STREET, DENVER, CO 80237



THE POWER OF PLACE

Discover modern, efficient workspace and sought-after onsite amenities, all in a location that makes commuting easier. It's all at Stanford Place III, conveniently situated in the north Denver Tech Center and surrounded by walkable dining, services, hotels, and recreation.

SPEC SUITES AVAILABLE IN ALL SIZES



TENANT LOUNGE: THE LINK



ABUNDANT COVERED PARKING

UP TO: 5:100 RATIO



STANFORD PLACE III



Efficient 21K SF floor plates



Newly renovated tenant lounge



Spectacular 360 degree views



Conference center w/ capacity for up to 100



Expanded onsite fitness center now complete



Complimentary snacks & water in lobby niche



Secure, onsite bike storage



Convenient onsite café



Outdoor patio



Collaboration areas



FULLY UPGRADED FITNESS CENTER



ONSITE WITH SHOWERS & LOCKERS

The new fitness center has doubled in size and provides private showers and lockers exclusively for tenants of Stanford Place III



ONSITE CAFE

**CONFERENCE CENTER
WITH CAPACITY UP TO 100**



QUARTERLY SOCIAL EVENTS

WEEKLY YOGA FOR TENANTS



SECURE ONSITE

BIKE STORAGE & LOCKERS



UPGRADED & ELEGANT LOBBY

FIND YOUR

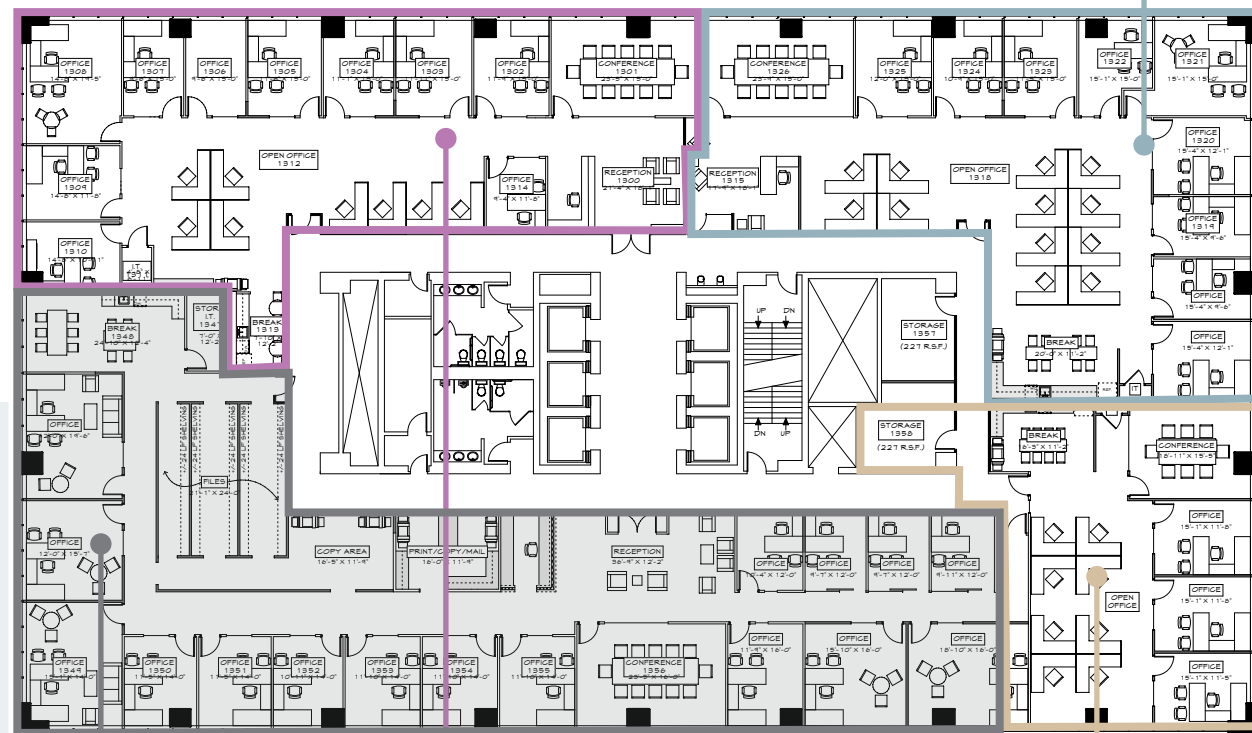
SUITE SPOT



From move-in ready spec suites to customizable full floors, you'll find space at Stanford Place III to fit your team's unique ways of working together.

13TH FLOOR

±2,471 - ±5,191 RSF Spec Suites with Incredible Views



Suite 1310 | ±5,191 RSF

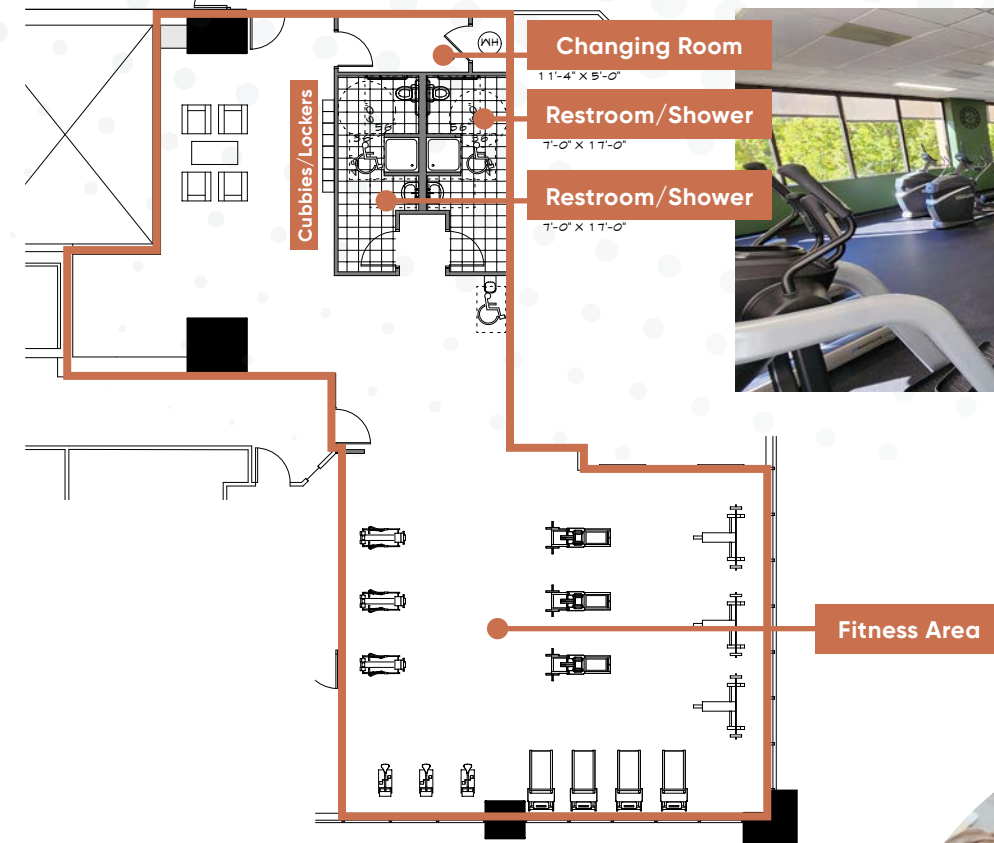
Suite 1350 | LEASED

Suite 1300 | ±5,166 RSF

Suite 1320 | ±2,471 RSF

FITNESS CENTER FLOOR PLAN

NOW COMPLETE

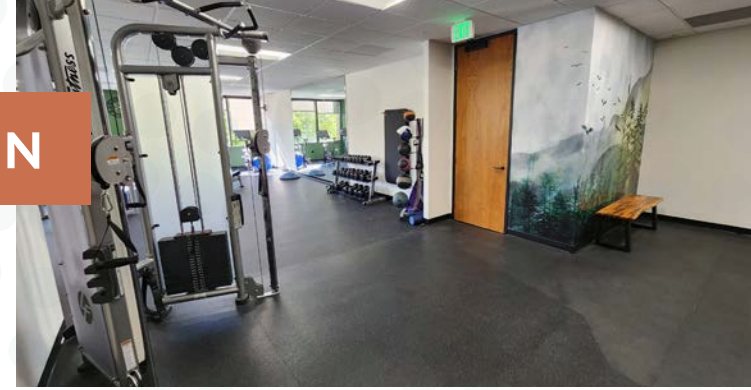


Changing Room
11'-4" X 5'-0"

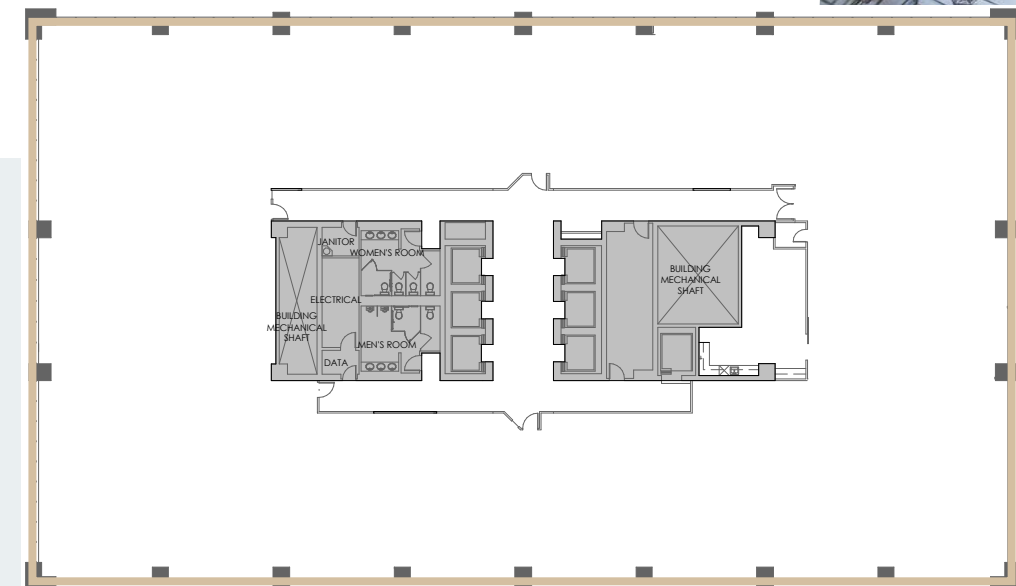
Restroom/Shower
7'-0" X 17'-0"

Restroom/Shower
7'-0" X 17'-0"

Fitness Area



TYPICAL FULL FLOOR | ±21,603 RSF





COMPLIMENTARY
WATER & SNACKS



UPDATED & MODERN
ELEVATOR CORRIDORS



MENASHE PROPERTIES

SP STANFORD PLACE III



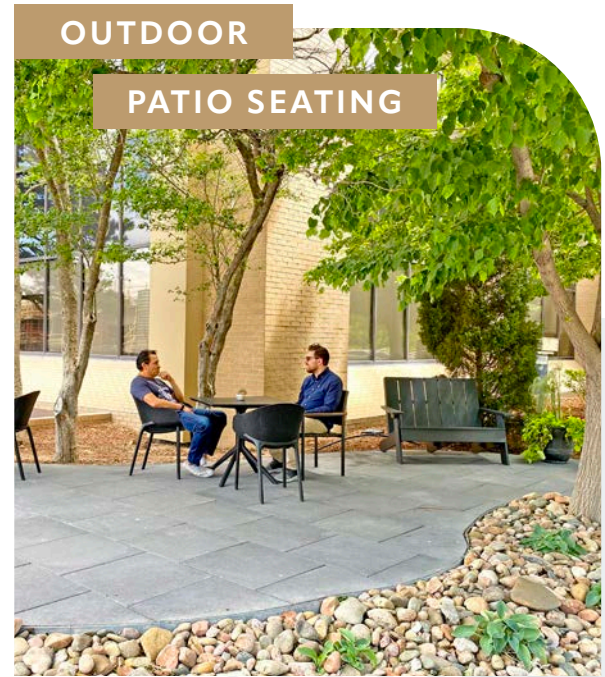
DEDICATED OWNERSHIP

Known as a responsive, trustworthy owner, Menashe Properties is investing significant resources to provide a top-notch tenant experience and value that's unmatched in the submarket.

Menashe Properties is a dedicated ownership team with over 40 years of experience in developing innovative properties that challenge traditional office spaces.



360 DEGREE VIEWS
OF THE ROCKY MOUNTAINS



OUTDOOR
PATIO SEATING



ABUNDANT COVERED PARKING

CONNECT WITH EASE

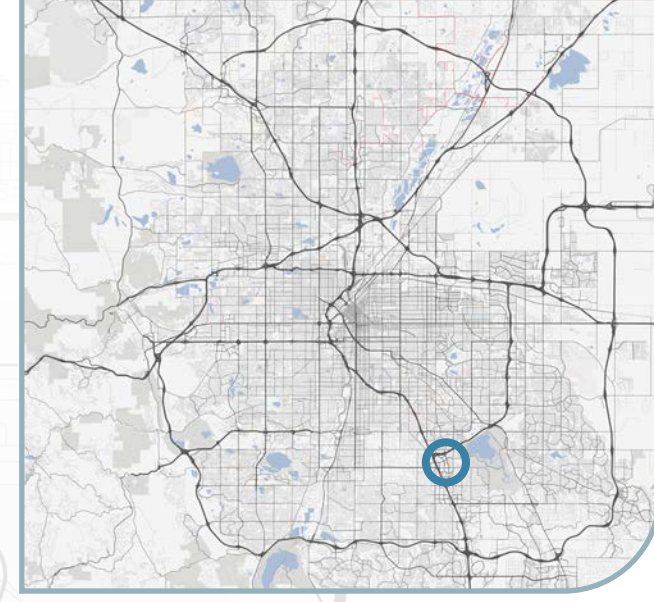
18 MINS
Downtown Denver

30 MINS
Denver Int'l Airport



WITHIN 1 MILE

9
FITNESS
OPTIONS



8 HOTELS

80+
RESTAURANTS



Stanford Place III is strategically situated at the intersection of I-25 and I-225, offering a prime central location in the DTC. From this advantageous position, you'll have easy access to everything the Denver Metro area has to offer, from the mountains to DIA to downtown. And within just a mile radius, you'll discover an array of amenities waiting to be explored.

NEARBY RETAIL CENTERS:

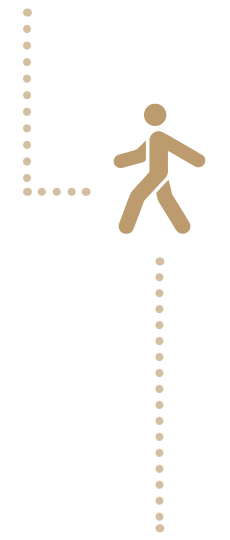
BELLEVUE PROMENADE

THE LANDMARK

bellevue
STATION



21
RETAILERS





STANFORD PLACE III

FOR MORE INFORMATION, PLEASE CONTACT:

DOUG WULF

Executive Managing Director
+1 303 312 4218
doug.wulf@cushwake.com

ANDREW MCCABE

Director
+1 303 312 4253
andrew.mccabe@cushwake.com

DAN MILLER

Managing Director
+1 303 312 4272
dan.miller@cushwake.com

STANFORDPLACEIII.COM

4582 S. Ulster Street, Denver, CO 80237



©2023 Cushman & Wakefield. All rights reserved. The information contained in this communication is strictly confidential. This information has been obtained from sources believed to be reliable but has not been verified. NO WARRANTY OR REPRESENTATION, EXPRESS OR IMPLIED, IS MADE AS TO THE CONDITION OF THE PROPERTY (OR PROPERTIES) REFERENCED HEREIN OR AS TO THE ACCURACY OR COMPLETENESS OF THE INFORMATION CONTAINED HEREIN, AND SAME IS SUBMITTED SUBJECT TO ERRORS, OMISSIONS, CHANGE OF PRICE, RENTAL OR OTHER CONDITIONS, WITHDRAWAL WITHOUT NOTICE, AND TO ANY SPECIAL LISTING CONDITIONS IMPOSED BY THE PROPERTY OWNER(S). ANY PROJECTIONS, OPINIONS OR ESTIMATES ARE SUBJECT TO UNCERTAINTY AND DO NOT SIGNIFY CURRENT OR FUTURE PROPERTY PERFORMANCE. COE-PM-WEST-12/07/23