

TRIANGLE

1550 Wewatta Street | Denver, Colorado

A LANDMARK
WORKPLACE

SEIZE THE — OPPORTUNITY

One of Denver's most recognizable, sustainable buildings can be your new setting for collaboration and growth. Offering open, creative office space, The Triangle Building sits at the heart of Denver's most desirable neighborhood, surrounded by acclaimed dining, retail, transit, cultural attractions, and sports and entertainment venues.

Located at the cross section of Wewatta Street and 16th Street Mall, the Triangle Building was built to reflect the thriving culture of lower downtown Denver.

TOTAL BUILDING ± 229,890 SF

NEW AMENITY PACKAGE COMING SOON

LEED PLATINUM CERTIFIED
the highest level of certification available

PET FRIENDLY

ON-SITE, SECURE PARKING

STEPS FROM UNION STATION



MAXIMIZE PRODUCTIVITY — PRIORITIZE WELLNESS

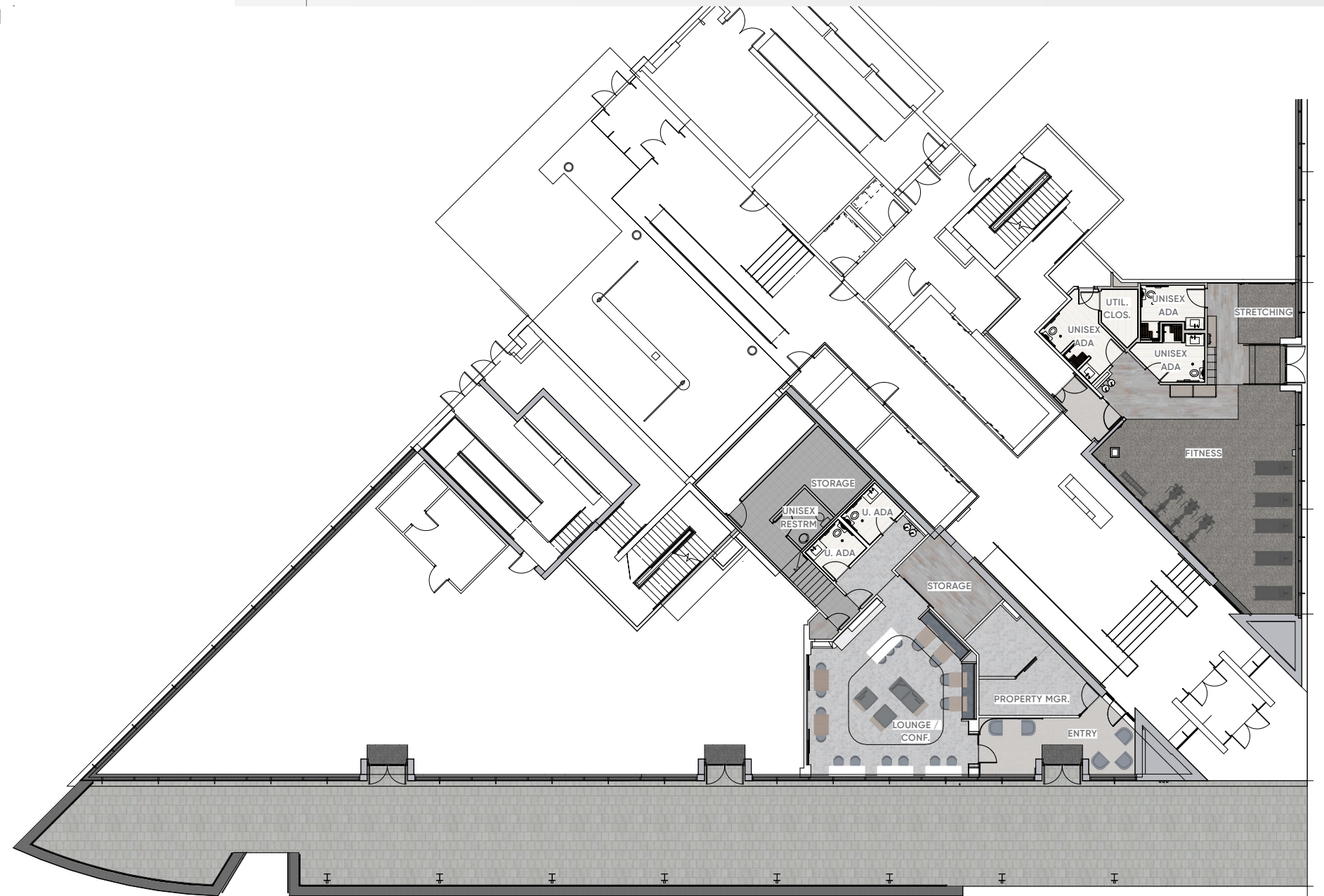
The Triangle Building's new amenity package is designed to elevate the experience of tenants and guests, featuring a state-of-the-art conference center and fitness facility. The conference center will be equipped with modern technology, making it ideal for team meetings, seminars, and collaborative sessions in a sleek, comfortable setting and the fully equipped fitness center will offer a dedicated space for relaxation and wellness, help tenants balance productivity with personal well-being.



- DELIVERING IN Q2 OF 2025
- FLEXIBLE CONFERENCE SPACE WITH MULTIPLE CONFIGURATION OPTIONS
- SEATING FOR UP TO 49
- TOP TIER FITNESS EQUIPMENT
- UNISEX RESTROOMS AND INFRARED SAUNA



TAKE A TOUR





TRIANGLE

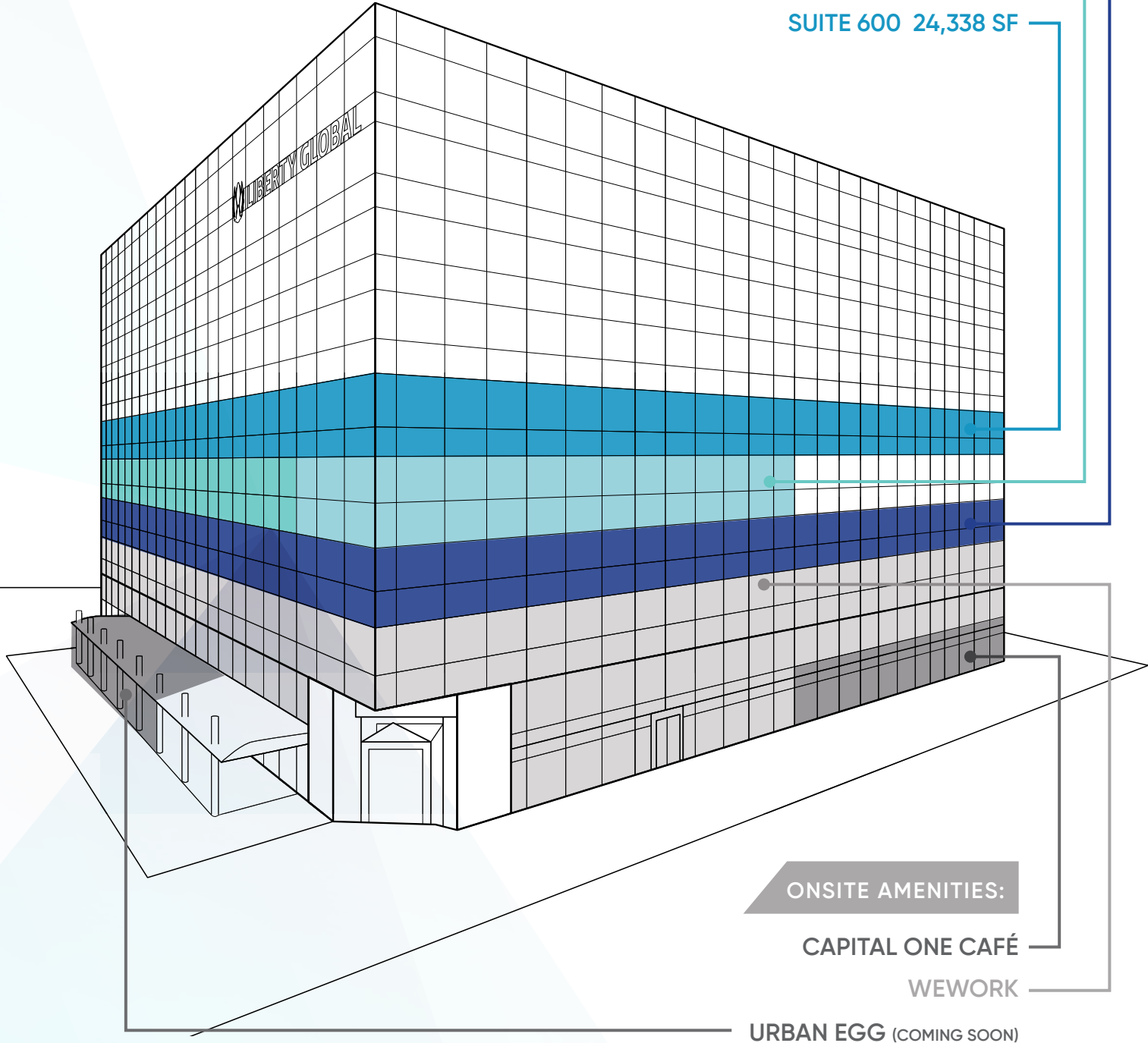


START HERE — GROW HERE

SUITE 400 24,338 SF

SUITE 500 14,692 SF

SUITE 600 24,338 SF

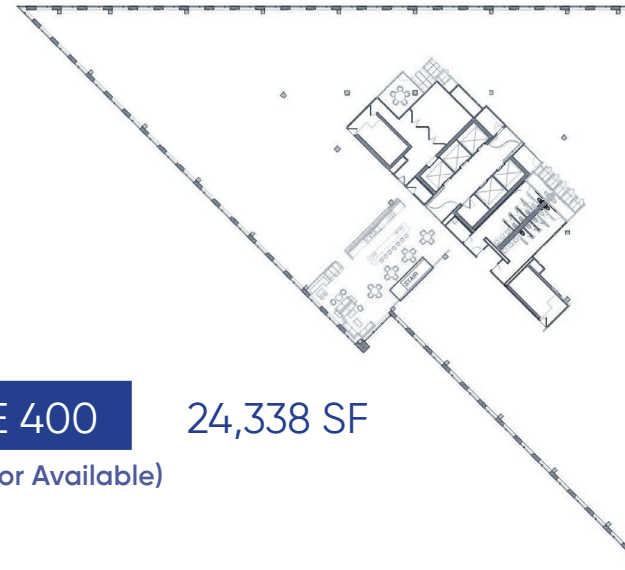


ONSITE AMENITIES:

CAPITAL ONE CAFÉ

WEWORK

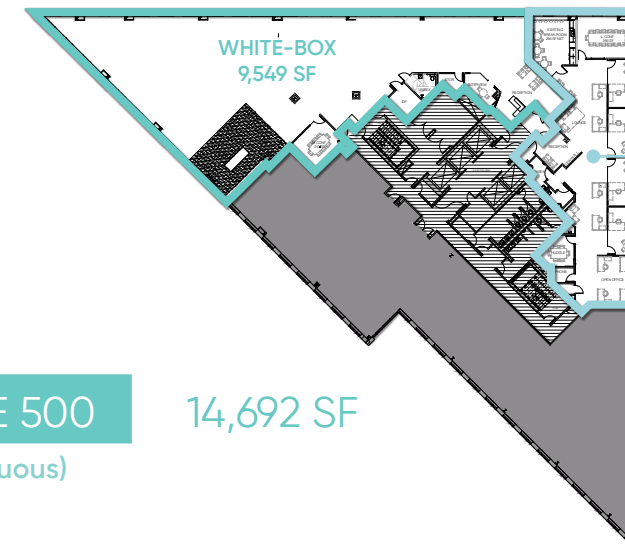
URBAN EGG (COMING SOON)



SUITE 400

24,338 SF

(Full Floor Available)



SUITE 500

14,692 SF

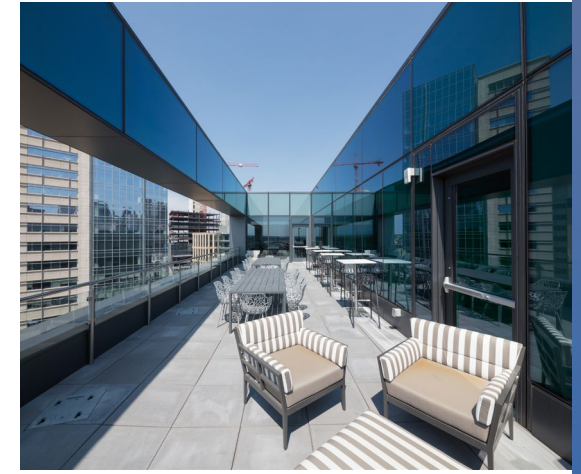
(Contiguous)



SUITE 600

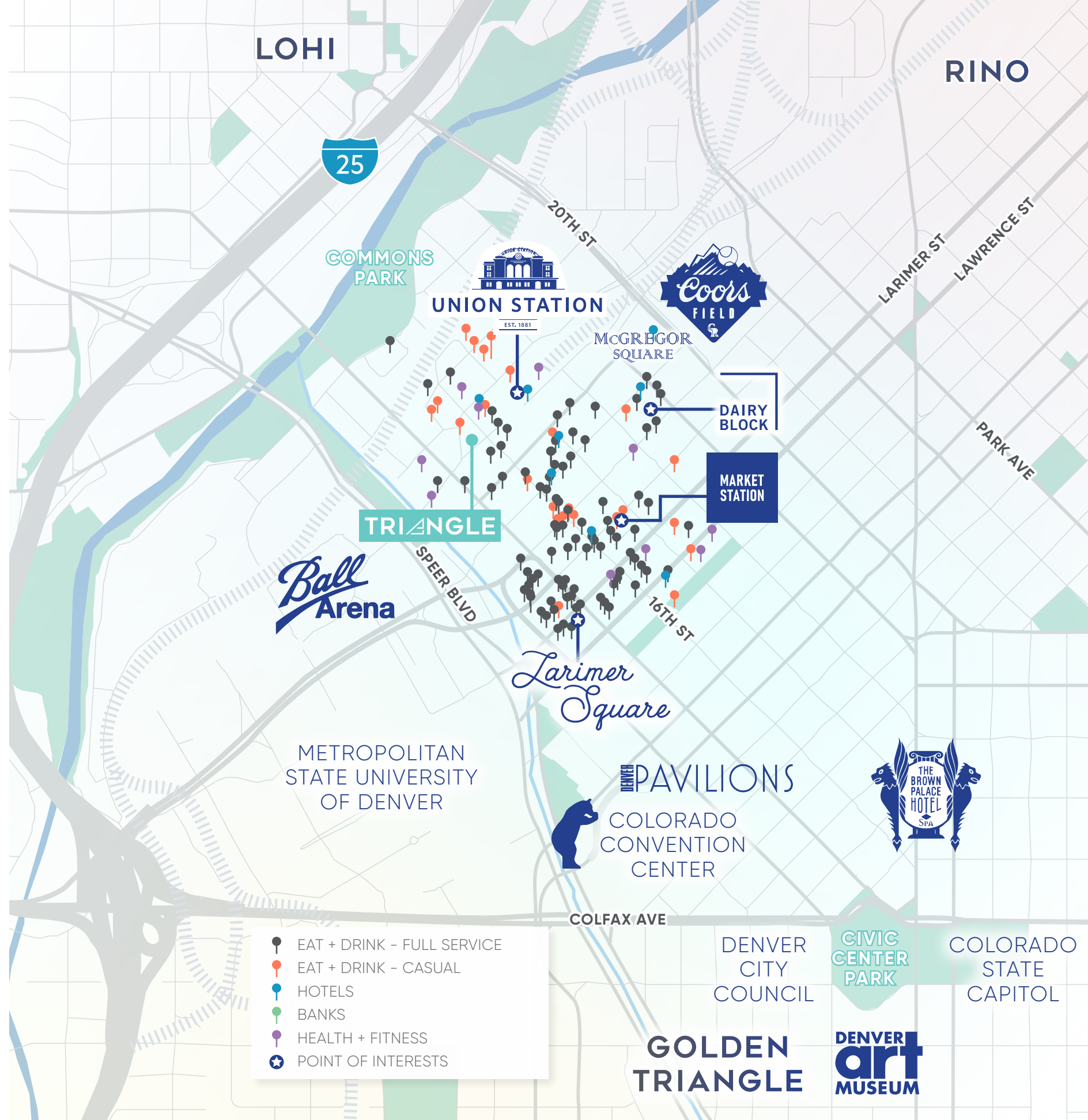
24,338 SF

(Full Floor Available)



EVERYTHING YOU NEED — MORE OF WHAT YOU WANT

This unbeatable location offers excellent walkability and easy access, no matter how you commute. And since work is just one stop in your busy day, The Triangle Building's lifestyle-centric location puts you close to restaurants, sporting events, trails, museums, and more. Connectivity to nearby neighborhoods is also a breeze, with a 16th Street Mall shuttle stop directly in front of the building and light rail and express bus service available at Union Station across the street.



TRIANGLE

1550 Wewatta Street | Denver, Colorado

FOR MORE INFORMATION, PLEASE CONTACT:

TODD WHEELER

Vice Chairman

+1 303 813 6441

todd.wheeler@cushwake.com

MICHAEL COPPOLA

Director

+1 303 312 4212

michael.coppola@cushwake.com

