

448 N LASALLE DR, CHICAGO, IL

448

NORTH
LASALLE DR



**CUSHMAN &
WAKEFIELD**



National
REAL ESTATE ADVISORS

BOUTIQUE ELEGANCE

IN RIVER NORTH

448 N LaSalle presents a premier, boutique opportunity with a stunning class-A building, in the heart of Chicago's prominent River North district.

This 174,599-square foot, newly constructed building comes well-equipped with a modern layout and a curated offering of amenities that include an expansive rooftop terrace, tenant lounge, fitness center and more.

448 NORTH LASALLE DRIVE CHICAGO, IL 60654

2ND FLOOR
13,971 RSF

FLOORS 4-7
15,307 RSF

3RD FLOOR
14,235 RSF

FLOORS 9-12
15,360 RSF

13TH FLOOR
Penthouse
Amenities

*Occupied
Floors 8 - 10*



A WELL-CURATED EXPERIENCE

Elegantly designed to offer a high-end boutique experience, 448 N LaSalle features an array of distinctly curated spaces that enhance productivity, collaboration and create a sense of community.

EXPANSIVE ROOFTOP TERRACE

TENANT LOUNGE

FITNESS CENTER WITH LOCKER ROOM & TOWEL SERVICE

DEDICATED BIKE ROOM

DESTINATION ELEVATORS

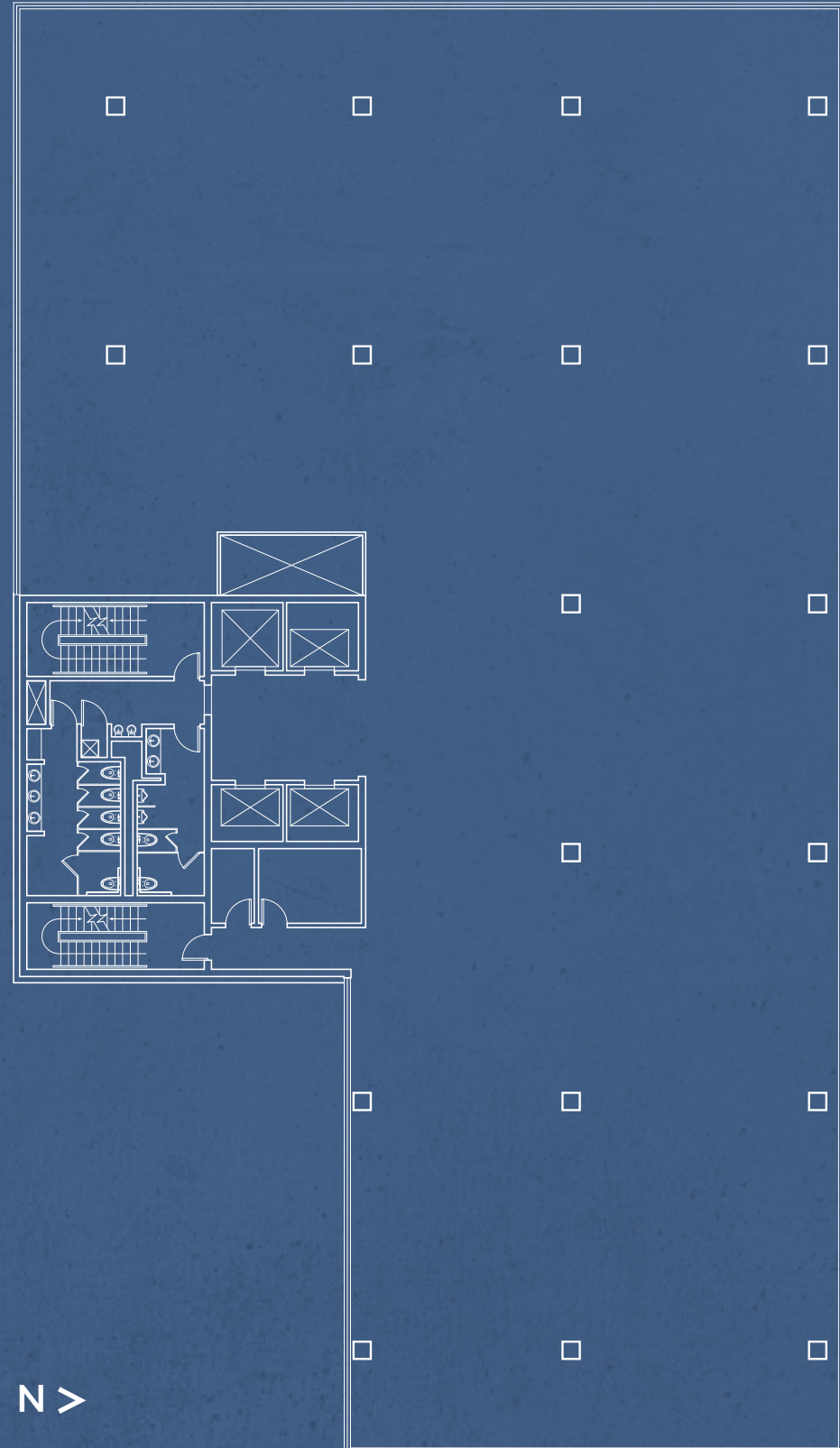
TOUCHLESS TURNSTILE ACCESS

FITWEL CERTIFIED

PENTHOUSE AMENITIES

TYPICAL FLOOR PLAN

15,378 RSF



EXPLORE WORLD-CLASS DESTINATIONS

Chicago's renowned River North district is home to many of the city's world-class dining, retail and entertainment experiences, which all sit just steps away from 448 N LaSalle to offer endless options for client lunches, happy hours and after-hours events.

**WITHIN
LESS THAN
A HALF MILE
RADIUS**

53
RETAIL
LOCATIONS

29
HOTEL
OPTIONS

182
DINING
SPOTS

STREAMLINE YOUR COMMUTE

Whether commuting by train, bus, bike, boat or foot, 448 N LaSalle's River North address is centrally located just minutes from all major modes of transit, including the Chicago water taxi, to offer seamless connectivity to all from all corners of Chicago.



WALK SCORE: 98



TRANSIT SCORE: 100



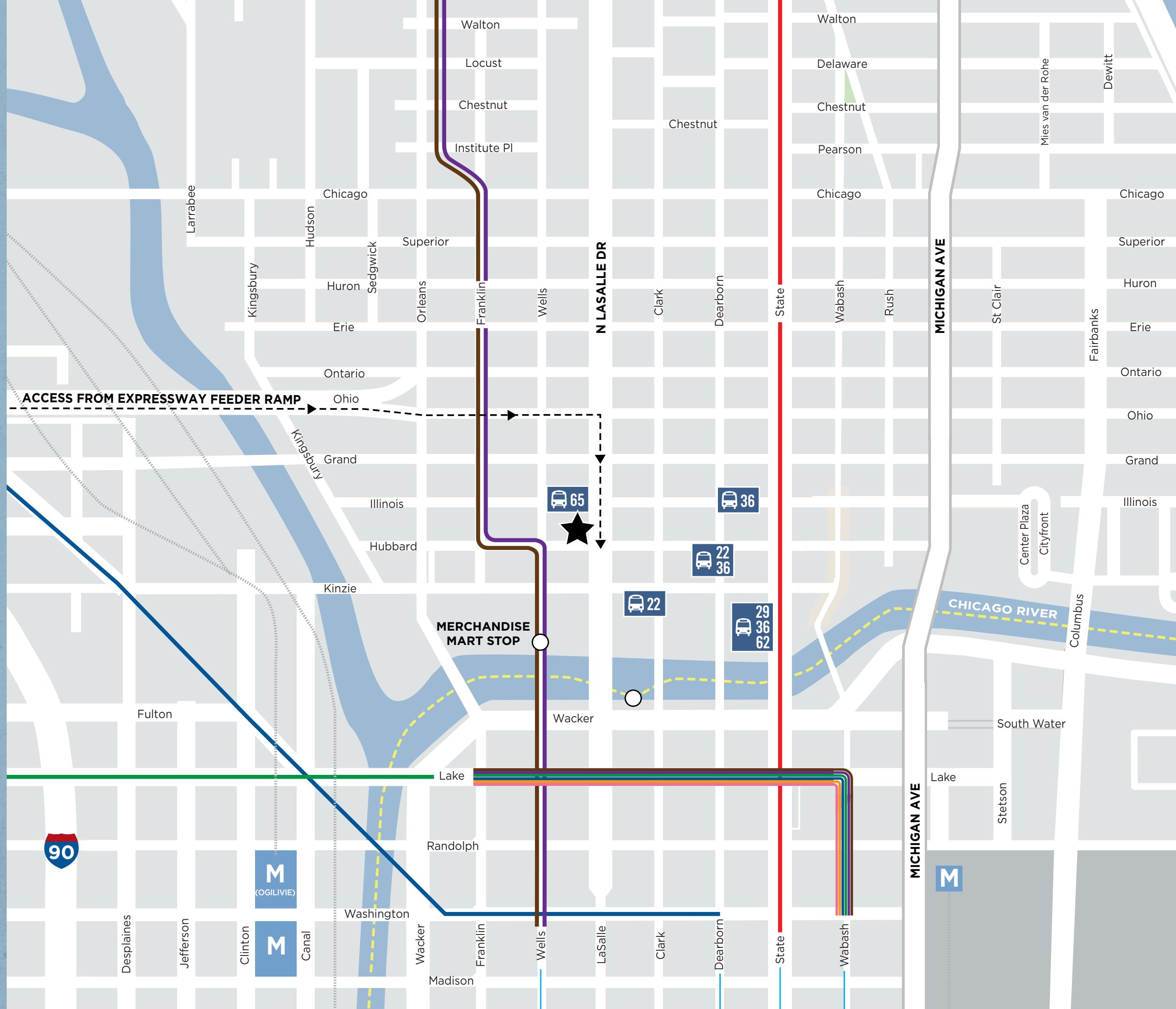
BIKE SCORE: 84

- RED LINE CTA
- BLUE LINE CTA
- BROWN/PURPLE LINE CTA
- GREEN/ORANGE LINE CTA
- - - WATER TAXI



BUS STOPS

65	2 minute walk
36	3 minute walk
22	3 minute walk
22/36	3 minute walk
29/36/62	7 minute walk



448

NORTH
LASALLE DR

FOR LEASING INFORMATION, CONTACT:

CHRIS CASSATA
+1 312 470 2300
Chris.Cassata@cushwake.com

PAIGE KRUEGER
+1 949 554 9643
Paige.Krueger@cushwake.com

