


901 BATTERY

SHORENSTEIN

CUSHMAN & WAKEFIELD

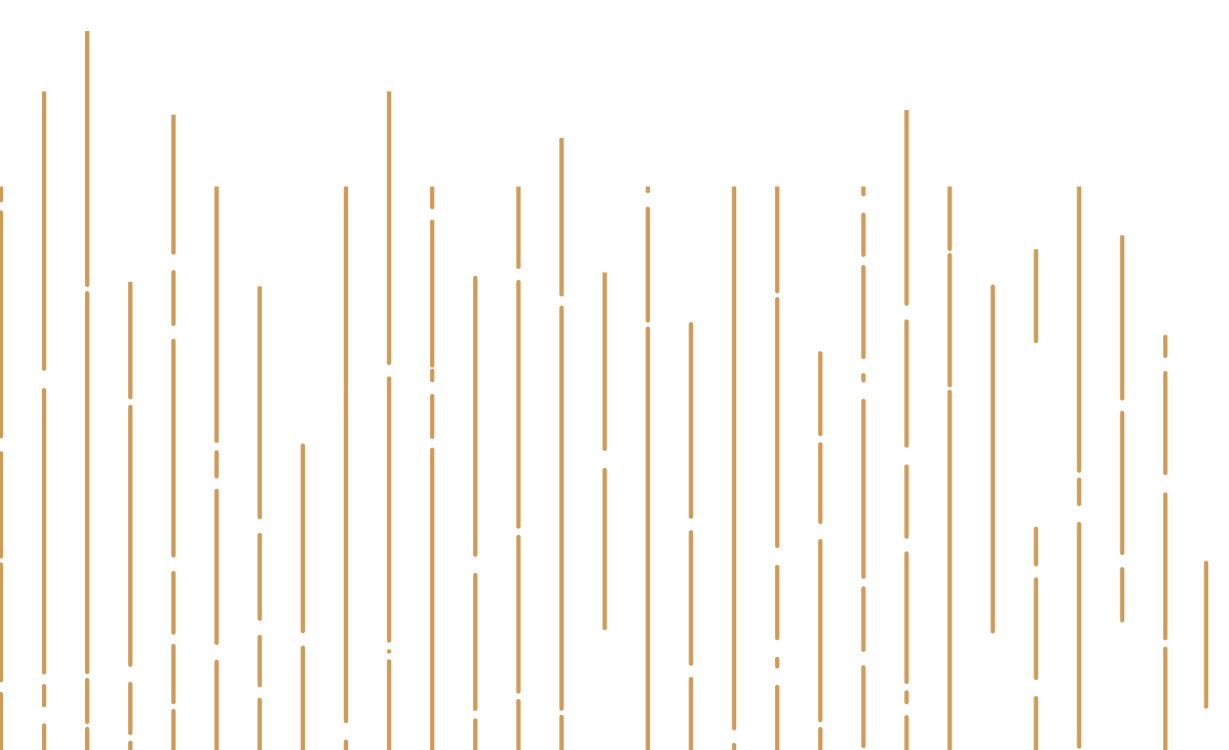


Built in the 1920s as a cigar factory, this historic building has been re-imagined for the modern era. Thoughtfully redesigned, it now blends industrial character with open, light-filled spaces that inspire creativity. 901 Battery is a place where history meets innovation — ready for the next generation of San Francisco's boldest ideas.

Experience
901 BATTERY

Elevated for the Modern Workplace

901 Battery has been re-imagined for the way innovators work today. The 2014 renovation revitalized the interiors, creating expansive, light-filled floor plates with soaring high ceilings. A sleek, modern lobby, flexible gathering spaces, and a central open kitchen foster collaboration and connection.



1923

Year of Construction

2014

Year of Renovation

91,112

Total Square Feet

4

Total Stories

~20,000 SF

Floor Plates

13'8" – 15'10"

Ceiling Heights

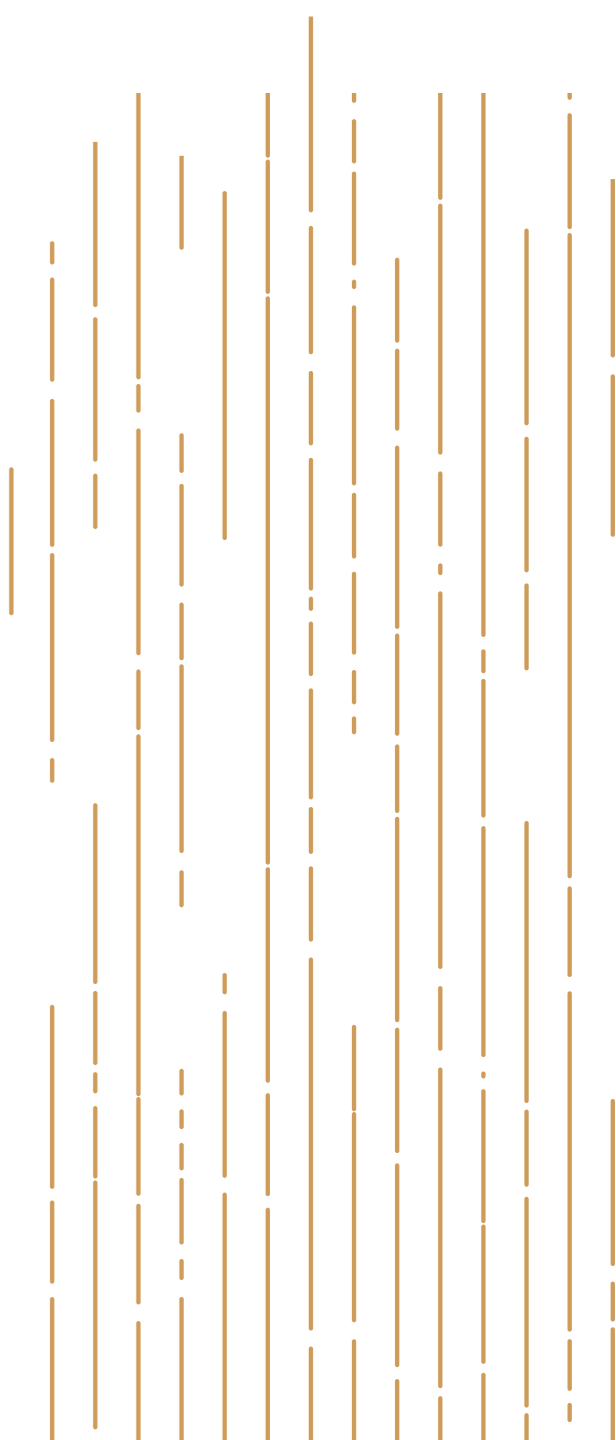
Gold LEED Certification



Designed with Collaboration & Wellness in Mind

901 Battery offers an inspiring workplace that supports innovation and well-being. From its sustainable practices to thoughtfully designed shared spaces, every detail enhances productivity and wellness.

- LEED Gold Certification
- Certified Green Business
- Open floor plates allows for ample natural light
- Multi-use space for collaboration and events
- Unimpeded views of San Francisco Bay



Suite 200

20,396 SF

- High-ceiling creative build-to-suit opportunity
- Large operable windows
- Exposed concrete ceilings
- Full HVAC
- TI funds available for buildout

[VIEW VIRTUAL TOUR](#)

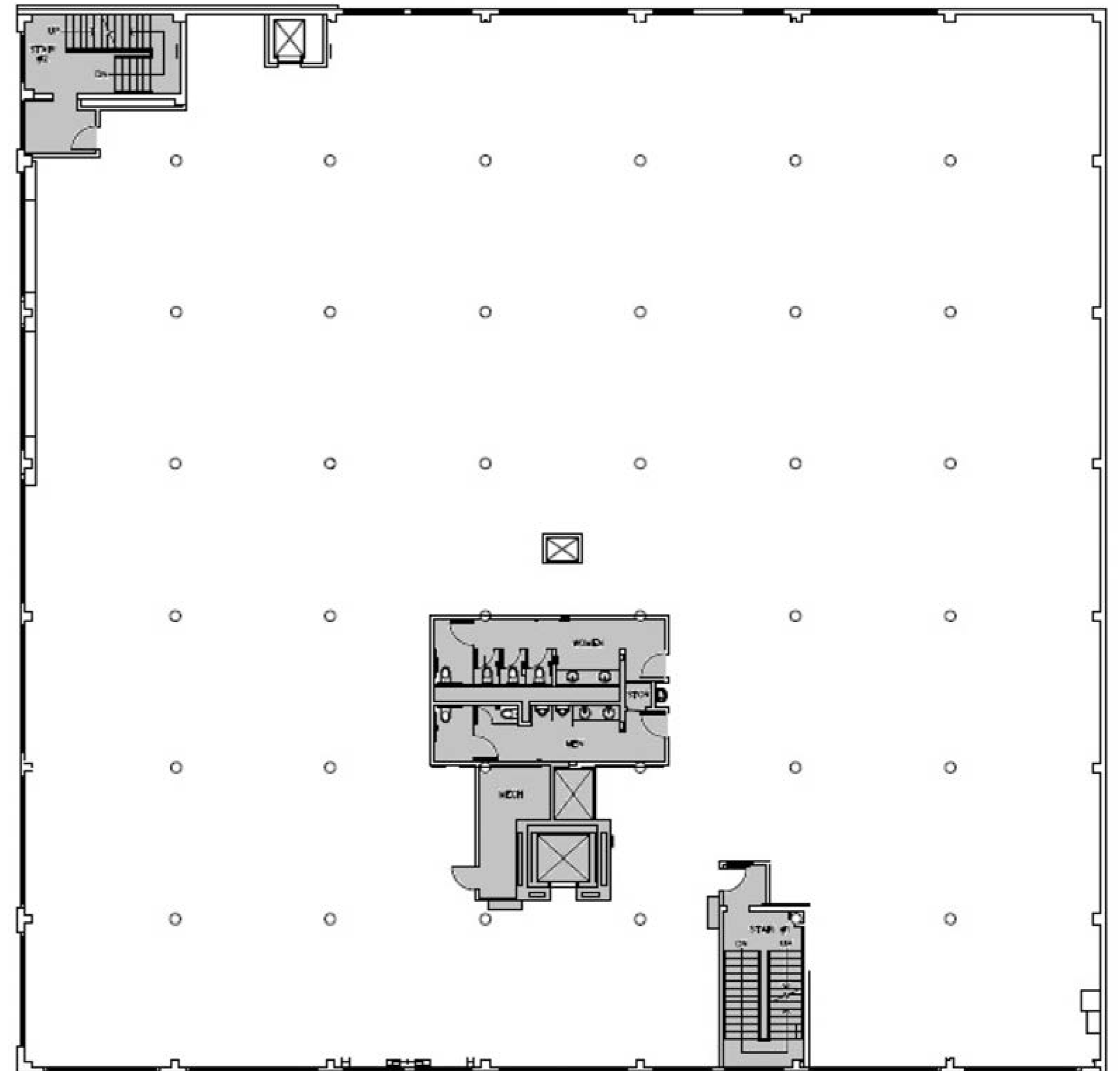
Brendon Kane

Managing Director
brendon.kane@cushwake.com
(415) 677-0466
Lic. #01884552

Sam Wasserstein

Managing Director
sam.wasserstein@cushwake.com
(415) 772-3528
Lic. #01798616

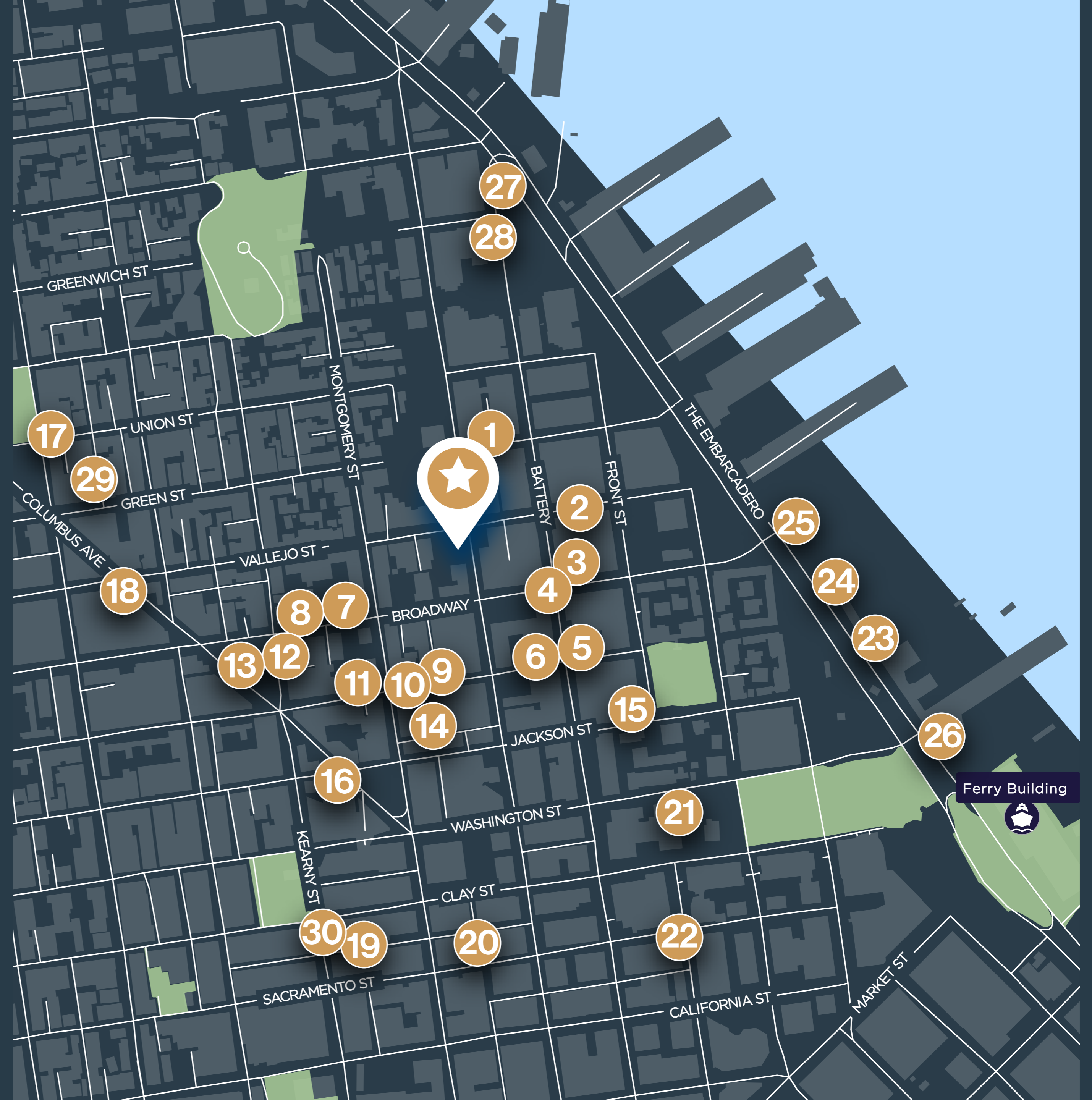
901 BATTERY



Where Work Meets Lifestyle

901 Battery places you in the heart of the Northern Waterfront, a vibrant neighborhood where history meets modern convenience. With distinct architecture, top-tier dining, and boutique retail at your doorstep, it's a place where work and culture come together effortlessly.

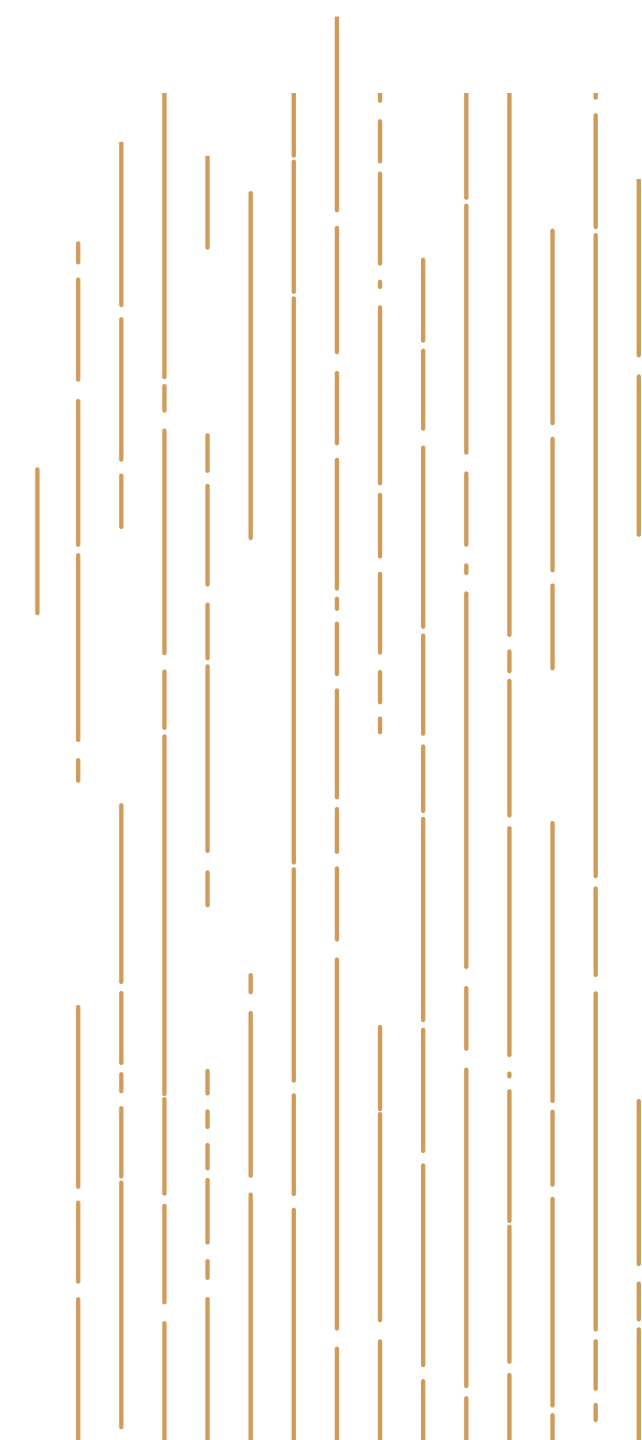
- | | |
|-----------------------------------|---------------------------------|
| 1. Indie Wine and Beer Bar | 16. Trestle Restaurant |
| 2. Grumpy's Restaurant & Pub | 17. Tony's Pizza Npoletana |
| 3. Subway | 18. Molinari Delicatessen |
| 4. Gambino's New York Subs | 19. Sisterita |
| 5. The Old Ship Saloon | 20. Wayfare Tavern |
| 6. Yo Yo's | 21. Bar Sprezzatura |
| 7. Fondue Chinoise | 22. Royal Exchange Restaurant |
| 8. SF Chickenbox | 23. Alora Coastal Mediterranean |
| 9. Quince | 24. Coqueta |
| 10. Cotogna | 25. The Waterfront Restaurant |
| 11. Blue Bottle Coffee | 26. Joyride Pizza |
| 12. Tommaso's Ristorante Italiano | 27. Fog City |
| 13. Tosca Cafe | 28. XICA |
| 14. Bix | 29. Sotto Mare |
| 15. Kokkari Estiatorio | 30. R&G Lounge |





A Commuter's Paradise

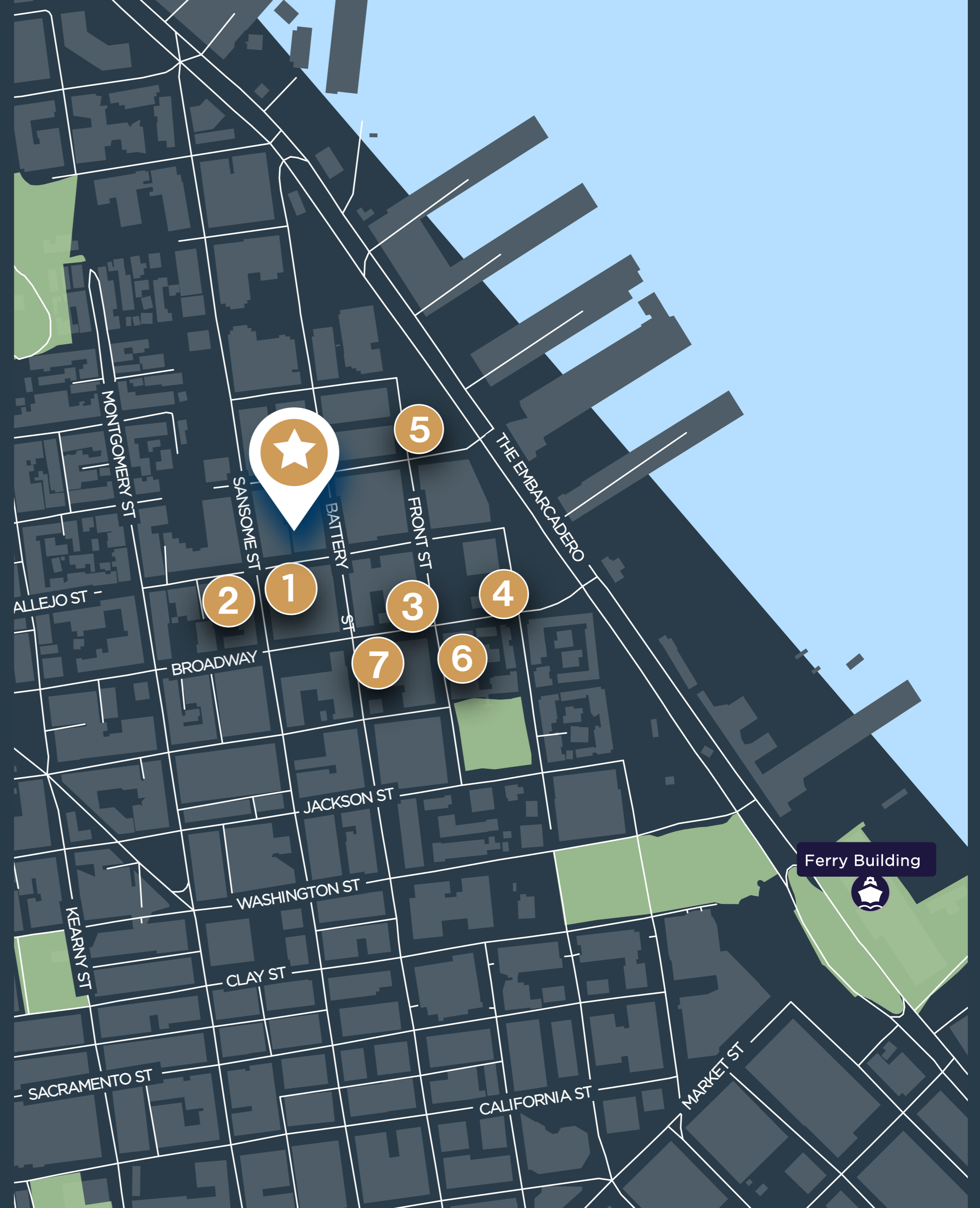
Located in San Francisco's Northern Waterfront and less than a block away from MUNI and Golden Gate Transit, 901 Battery offers convenient access to San Francisco's vast multi-modal transit system.



Parking Made Easy

With dedicated off-site parking options providing easy access to the building, your workday starts and ends with ease.

- 1. 901 Battery Parking • 998 Sansome St.
- 2. Ampco Parking System • 955 Sansome St.
- 3. Imperial Parking • 847 Front St.
- 4. West Coast Parking • 735 Davis St.
- 5. SP Plus Corporation • 1000 Front St.
- 6. Propark • 750 Front St.
- 7. ABM Parking Services • 750 Battery St.



901 BATTERY

Brendon Kane

Managing Director

brendon.kane@cushwake.com

(415) 677-0466

Lic. #01884552

Sam Wasserstein

Managing Director

sam.wasserstein@cushwake.com

(415) 772-3528

Lic. #01798616

