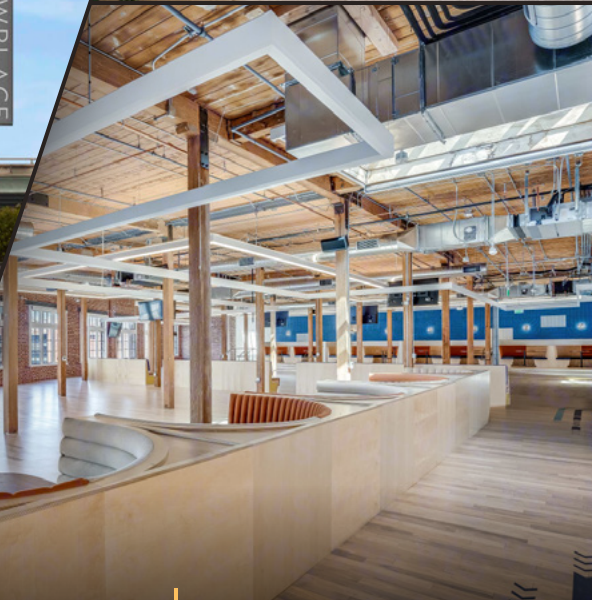


2 HENRY ADAMS



±227,380 SF - SAN FRANCISCO'S LARGEST BRICK & TIMBER OFFERING 167,380 SF R&D/LAB | 60,000 SF OFFICE

BUILDING TOUR



2HENRYADAMS.COM

**JD LUMPKIN**

+1 415 658 3648  
jd.lumpkin@cushwake.com  
Lic. 01215057

**MARC POPE**

+1 650 619 2981  
marc.pope@cushwake.com  
Lic. 01474483

**MARK ANDERSON**

+1 415 713 1014  
mark.anderson@cushwake.com  
Lic. 01325399





# BUILDING FEATURES



## CONSTRUCTION TYPE

Heavy Timber | Modern  
Seismic Reinforcement



## EXTERIOR BUILDING FACADE SIGNAGE AVAILABLE

Facing I-80 / Hwy 101,  
visible to over 200,000  
cars per day.



## BUILDING HOURS

Building Security &  
Tenant Access –  
24/7 HVAC – 8:00 AM  
to 5:00 PM



## CEILING HEIGHTS

12 to 16 feet



## PARKING

Secure Lot available  
across the street



## PARKLET



## NEW LOBBY



## PUBLIC TRANSPORTATION

0.7 Miles - San Francisco  
Caltrain Station

1 Mile - 9th @ Market  
Bart Station



## LOCATION

Located just off the  
HWY 80/101 and within  
walking distance of  
numerous restaurants/bars  
& retail

## SPACE HIGHLIGHTS

- Newly built high-end creative space
- Ready for occupancy
- 4,000 SF Roof deck with Penthouse
- Full kitchen and all-hands area
- Showers and lockers
- Interconnecting staircase
- En-suite bicycle parking
- Expansive windowline & numerous skylights



2 HENRY ADAMS

# STACKING PLAN



\*Ground floor space can be made available

□ - AVAILABLE LAB/OFFICE

■ - LAB/RETAIL

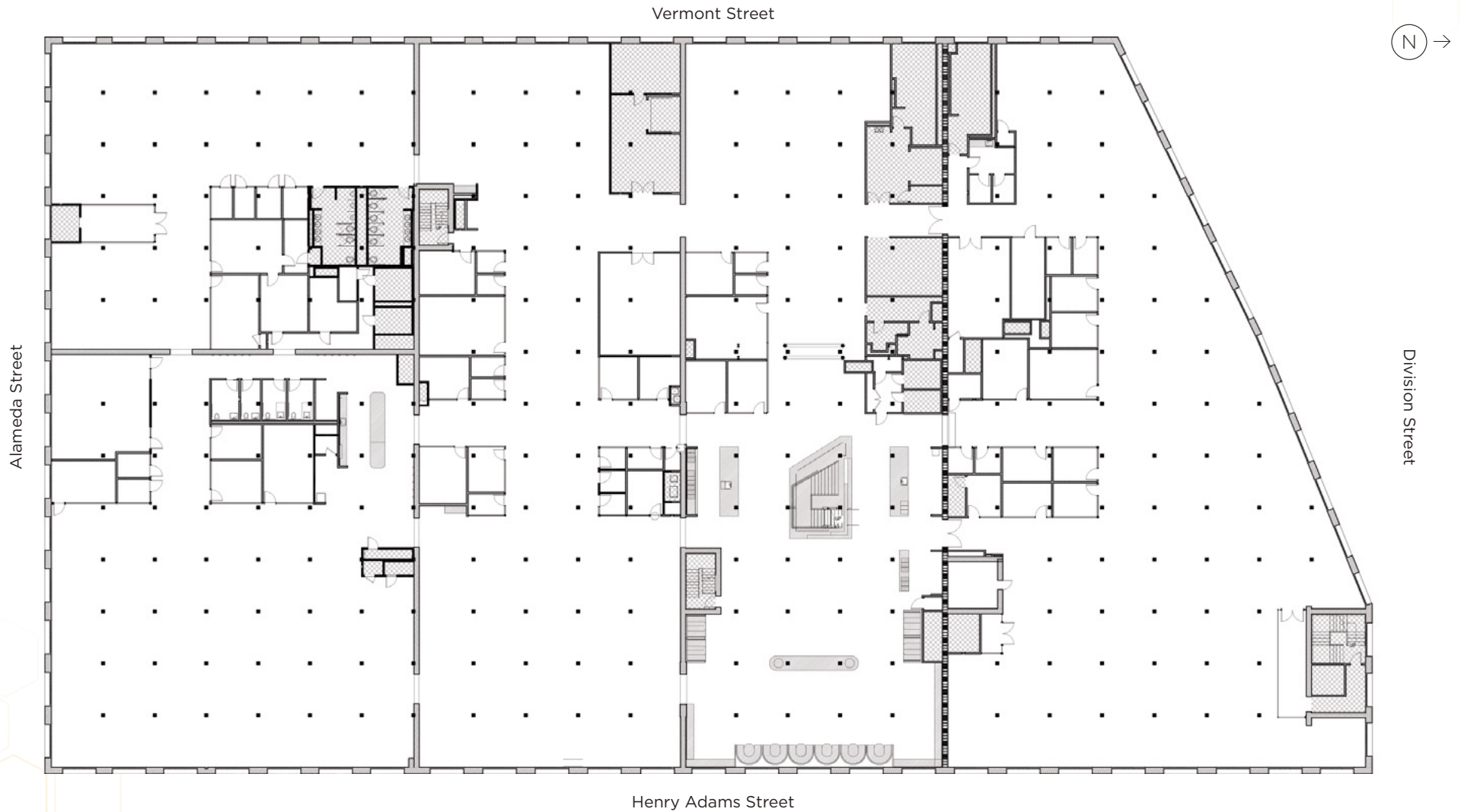
■ - LEASED

# 3<sup>rd</sup> FLOOR ±73,028 RSF AVAILABLE NOW



# 4<sup>TH</sup> FLOOR ±74,766 RSF AVAILABLE NOW

[CLICK HERE FOR  
360° VIRTUAL TOUR](#)

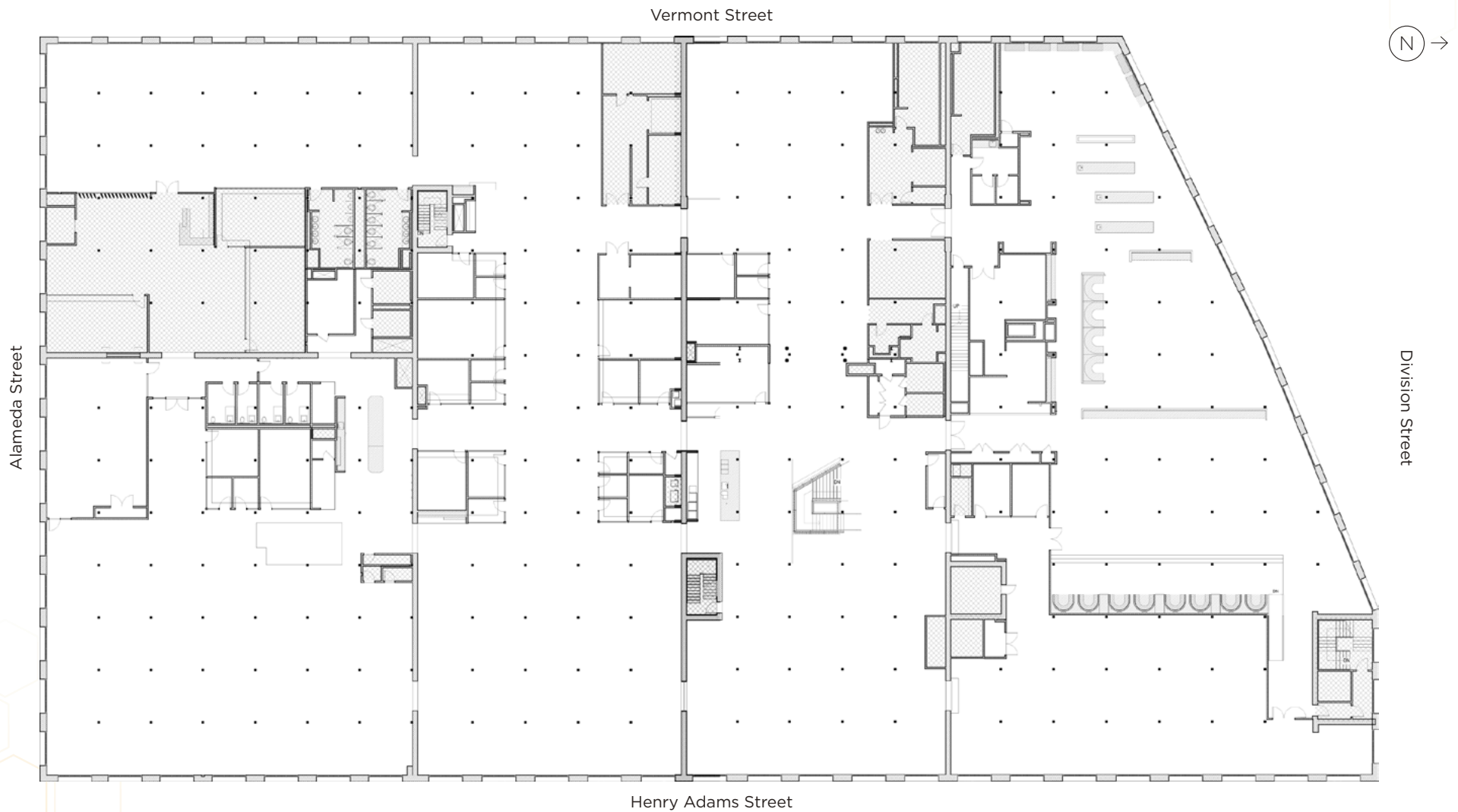


**Note:** Brand new interiors finished in 2020



# 5<sup>TH</sup> FLOOR ±74,060 RSF AVAILABLE NOW

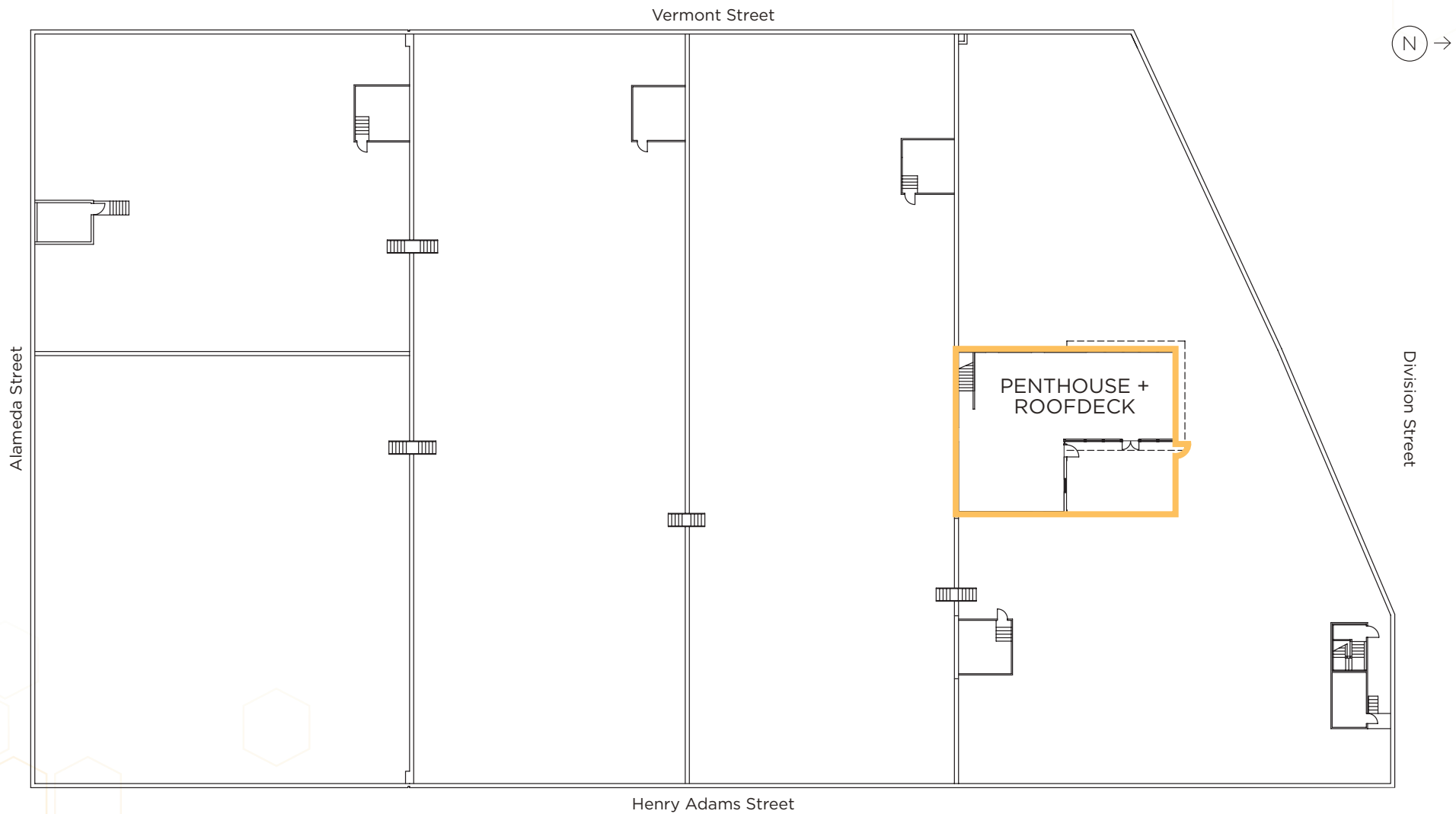
[CLICK HERE FOR  
360° VIRTUAL TOUR](#)



**Note:** Brand new interiors finished in 2020

# PENTHOUSE & ROOF DECK ±5,524 RSF AVAILABLE NOW\*

\*To be leased together with 5<sup>th</sup> Floor



# 60,000 SF OFFICE 167,380 SF R&D/LAB



5TH FLOOR - OPEN AREA/KITCHEN



5TH FLOOR - KITCHEN



5TH FLOOR - LAB/OFFICE



5TH FLOOR - OPEN AREA



PENTHOUSE & ROOF DECK\*

*\*To be leased together with 5<sup>th</sup> Floor*



# AMENITIES



## ARTS & ENTERTAINMENT

1. Chase Center
2. Bottom of the Hill

## BARS/LOUNGES

3. Hardwood Bar & Smokery
4. Mars Bar & Restaurant
5. Thee Parkside
6. Connecticut Yankee
7. il Pirata
8. Blooms Saloon

## CAFES

9. Philz Coffee
10. Starbucks
11. La Lucha Coffee Bar
12. Boba Guys Potrero

## HEALTH CLUBS/GYMS

13. DIAKADI
14. FITNESS SF - SoMa
15. Reasons Athletic Club
16. 24 Hour Fitness
17. Fitness Urbano

## RESTAURANTS

18. Niku Steakhouse
19. Dumpling Time
20. Saap Ver Thai Food
21. Omakase
22. Torraku Ramen
23. Mediterranean Aroma
24. Buenafe Taqueria
25. Wolfe's Lunch
26. Market Cocina
27. Oda Restaurant
28. Public Urban Taqueria
29. SF Kebab
30. Ganim's
31. Plow
32. Chez Maman East
33. The Willows
34. Rintaro



2 HENRY ADAMS





2 HENRY ADAMS

Outdoor plaza delivery Q1 2023

2HENRYADAMS.COM

**JD LUMPKIN**

+1 415 658 3648  
jd.lumpkin@cushwake.com  
Lic. 01215057

**MARC POPE**

+1 650 619 2981  
marc.pope@cushwake.com  
Lic. 01474483

**MARK ANDERSON**

+1 415 713 1014  
mark.anderson@cushwake.com  
Lic. 01325399



©2024 Cushman & Wakefield. All rights reserved. The information contained in this communication is strictly confidential. This information has been obtained from sources believed to be reliable but has not been verified. No warranty or representation, express or implied, is made as to the condition of the property (or properties) referenced herein or as to the accuracy or completeness of the information contained herein, and same is submitted subject to errors, omissions, change of price, rental or other conditions, withdrawal without notice, and to any special listing conditions imposed by the property owner(s). Any projections, opinions or estimates are subject to uncertainty and do not signify current or future property performance. coe-pm-west- 09/13/24