



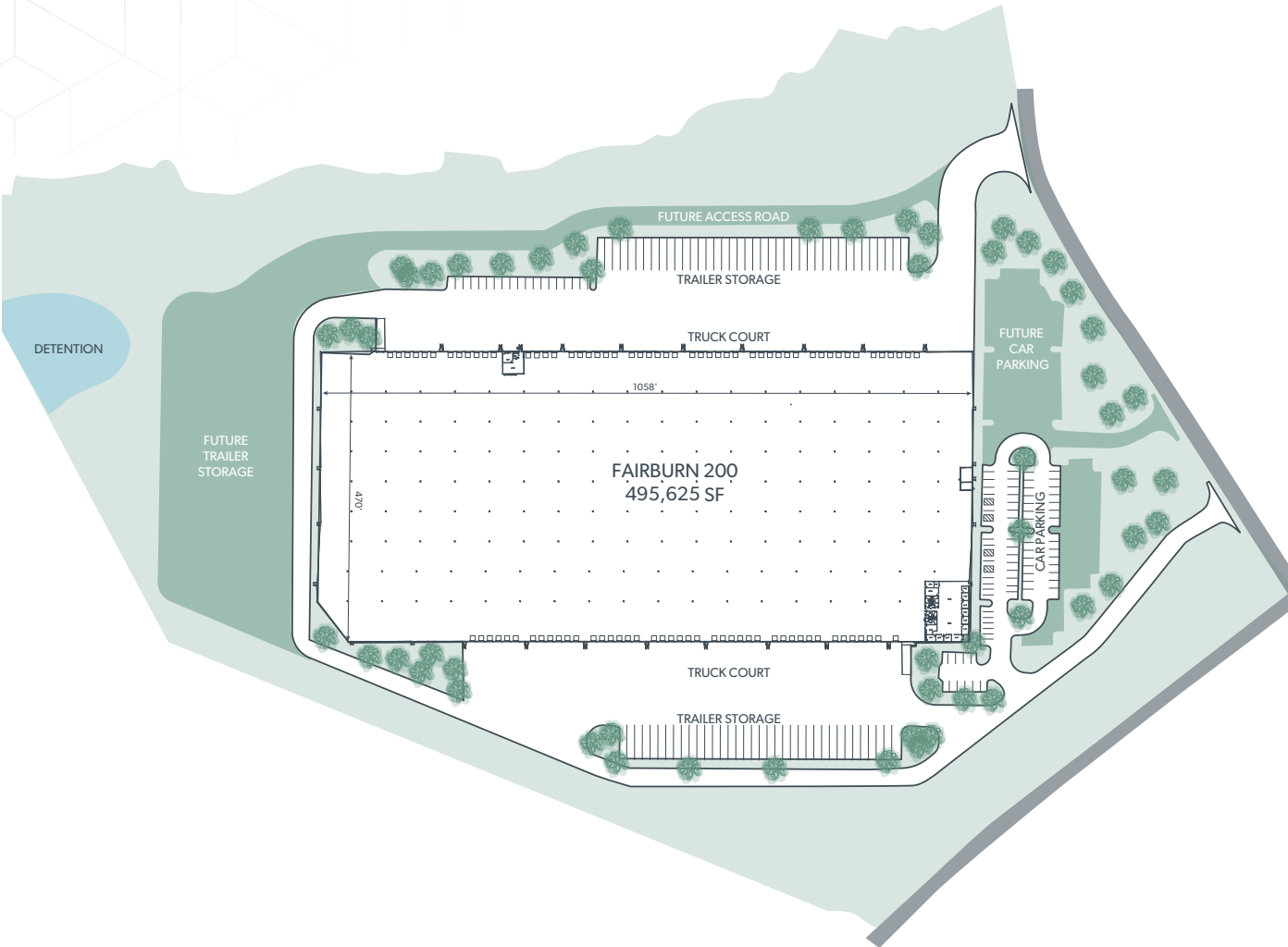
# 2000 LOGISTICS CENTER



**495,625 SF CLASS A INDUSTRIAL SPACE FOR LEASE**



# PROPERTY HIGHLIGHTS



Docks: 97 ext



Drive Ins: 2 tot./12' w x 14' h



Cross Docks: Yes



Levelers: 50



Construction: Steel



Truck Court: 190'



Clear Height: 36'



Columns: 56'w x 65'd



Floor Load / Thickness: 4,000 lbs/SF' | 7"



114 Auto Spaces (Expandable)



99 Trailer Storage Spots



Sprinklers: ESFR



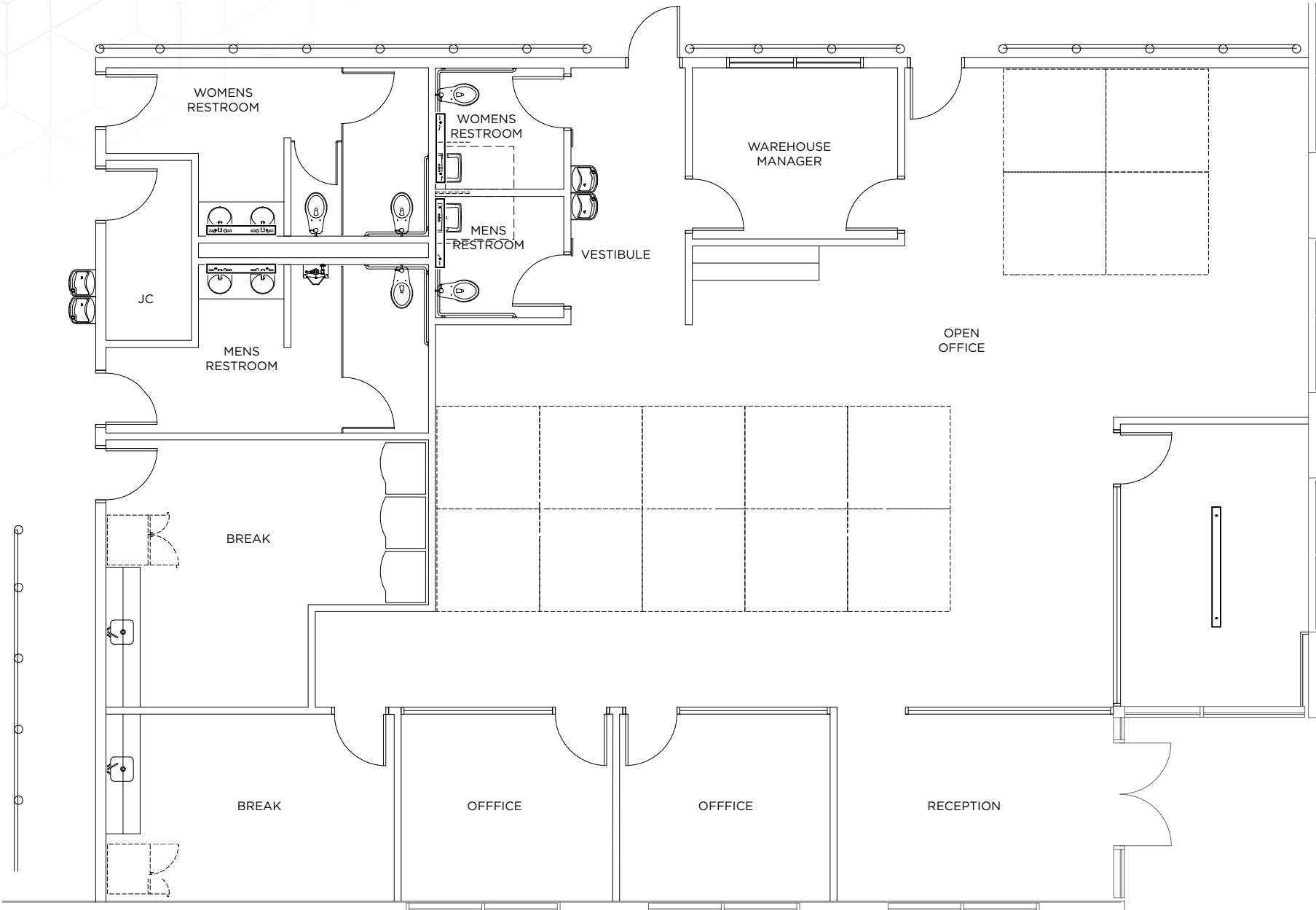
Power: 277/480v, 3-phase



Utilities: Heating - Gas

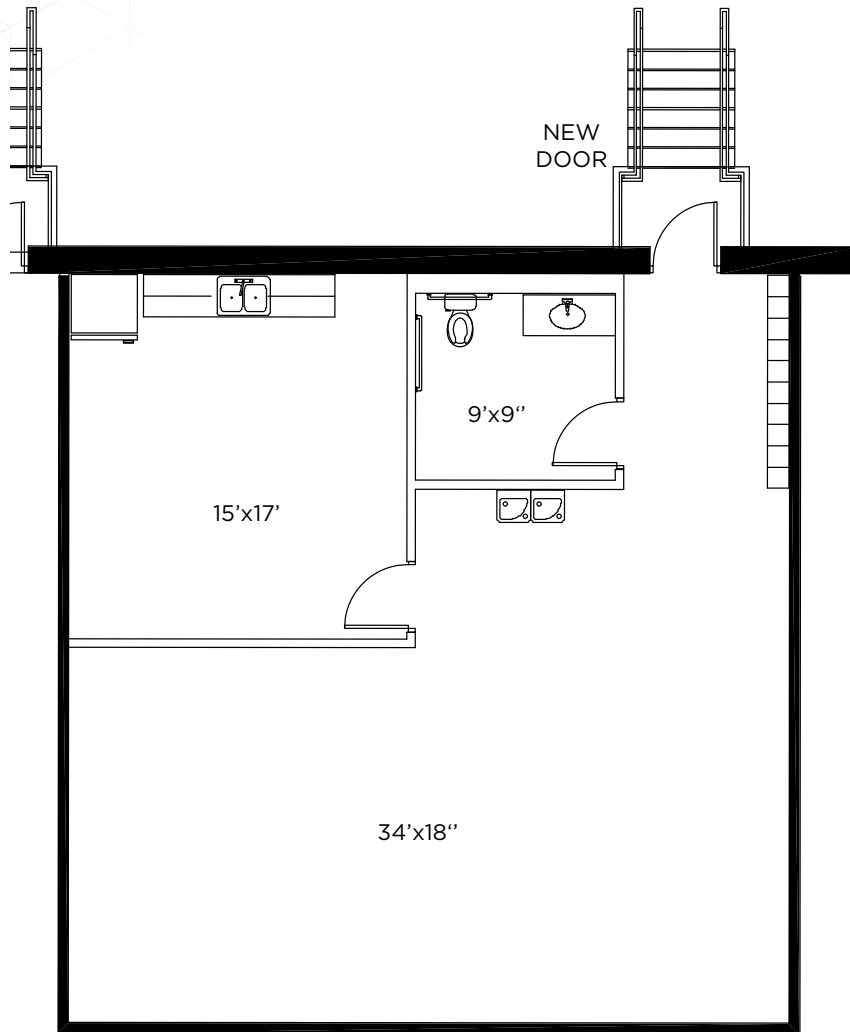
# EXISTING OFFICE PLAN

3,488 SF



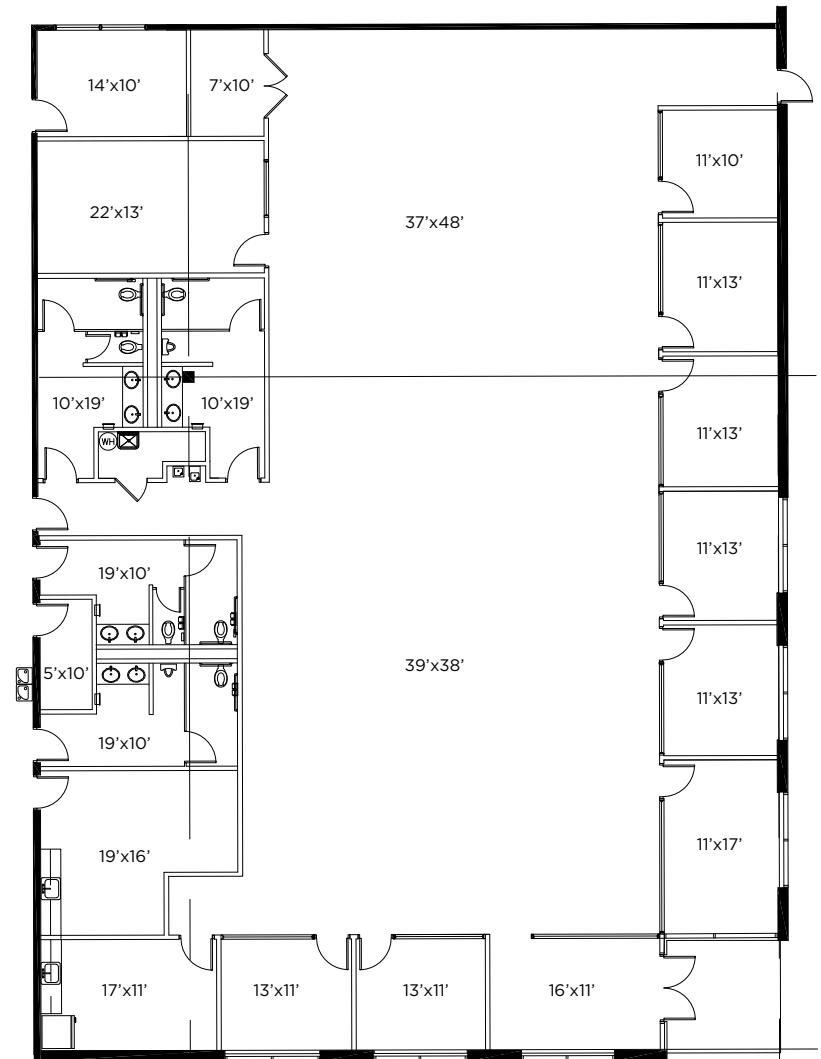
# PROPOSED EXPANDED OFFICE PLAN

## Proposed Trucker's Office



**TRUCKERS LOUNGE 1,197 SQ.FT.**

## Proposed Office Expansion



**6,693 SF**

# AERIAL

CLICK HERE FOR  
INTERACTIVE  
**360°**  
TOUR

99 TRAILER SPACES

48 DOCK DOORS  
(25 WITH LEVELERS)

49 DOCK DOORS  
(25 WITH LEVELERS)

190' TRUCK COURT

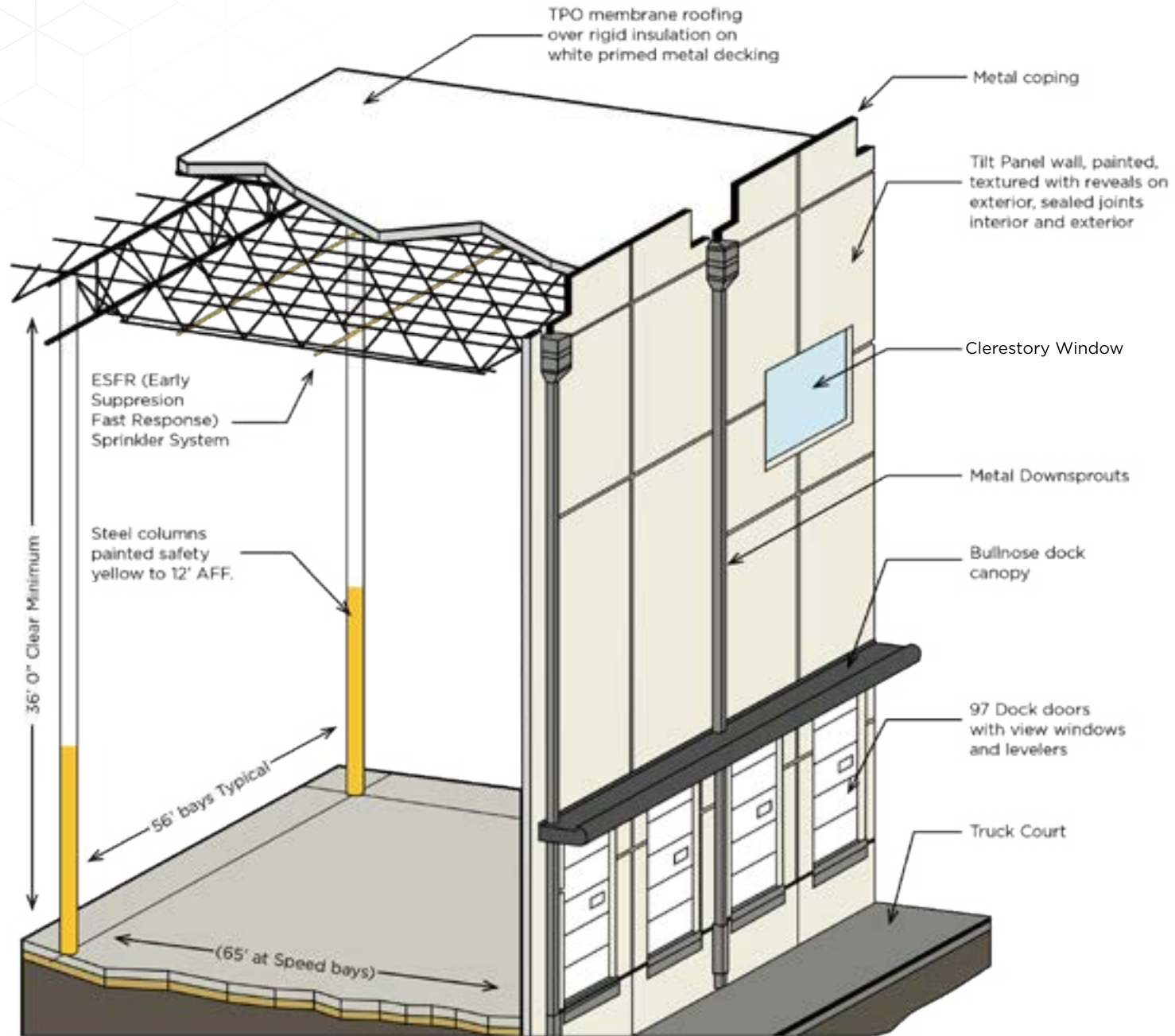
190' CONCRETE  
TRUCK COURT

3,488 SF OFFICE

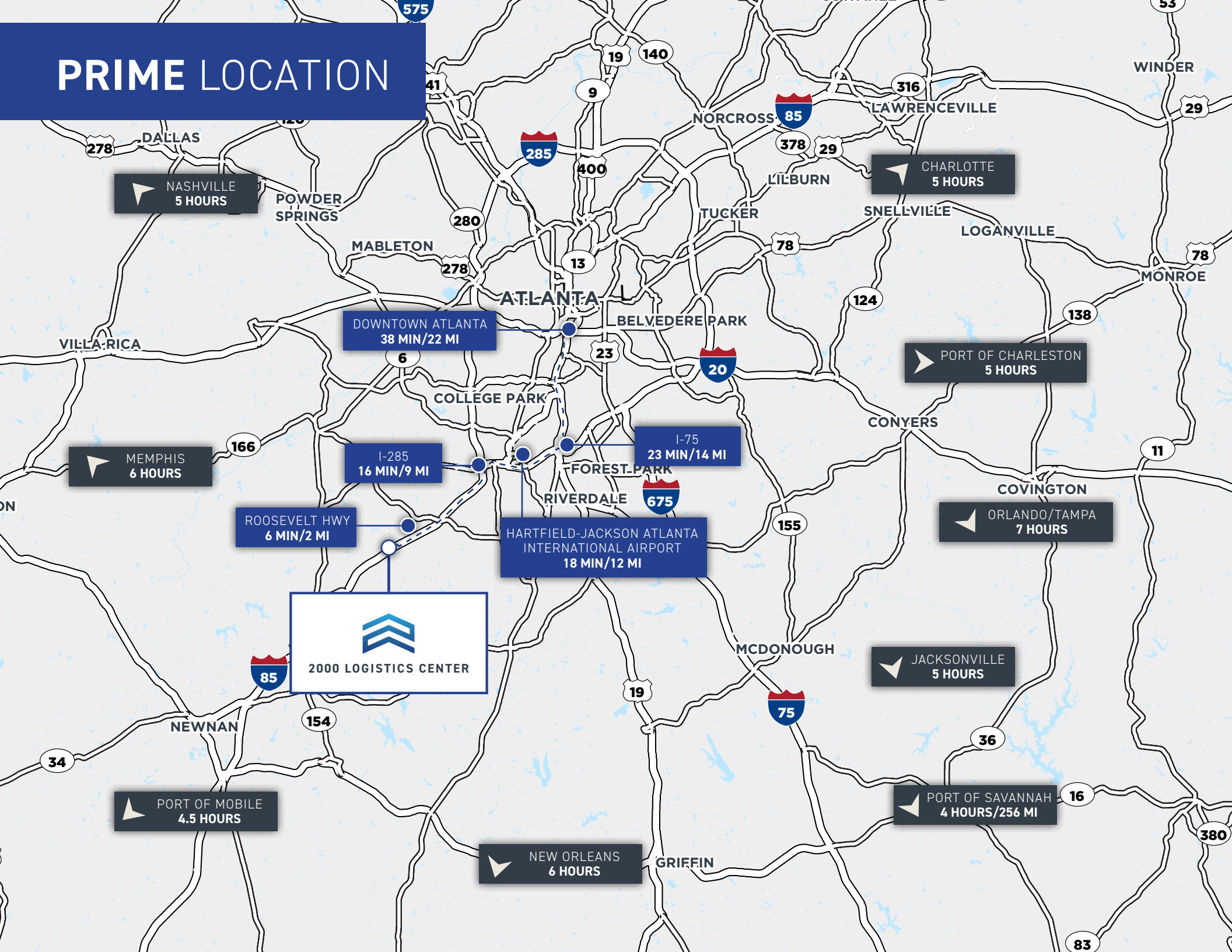
114 AUTO SPACES  
(EXPANDABLE)



# BUILDING CROSS SECTION



# PRIME LOCATION



**2000 LOGISTICS CENTER**

# STRONG LABOR FORCE

**134,524**

Warehouse Employees

**\$72,356**

Med HH Income

**5.2%**

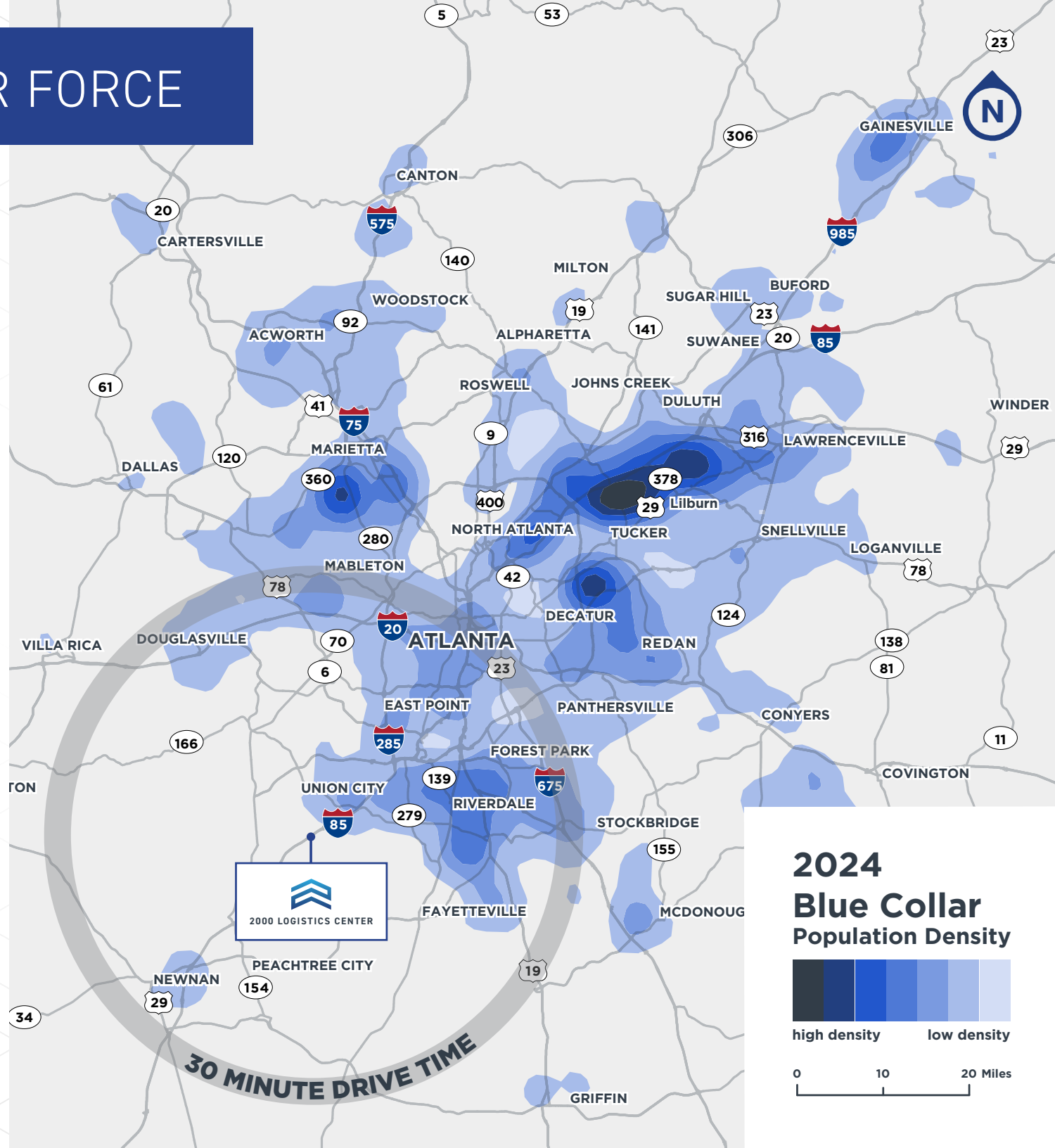
Unemployment Rate

**28.1%**

High School Educated

**45.7%**

College Educated





# A CLOSER LOOK

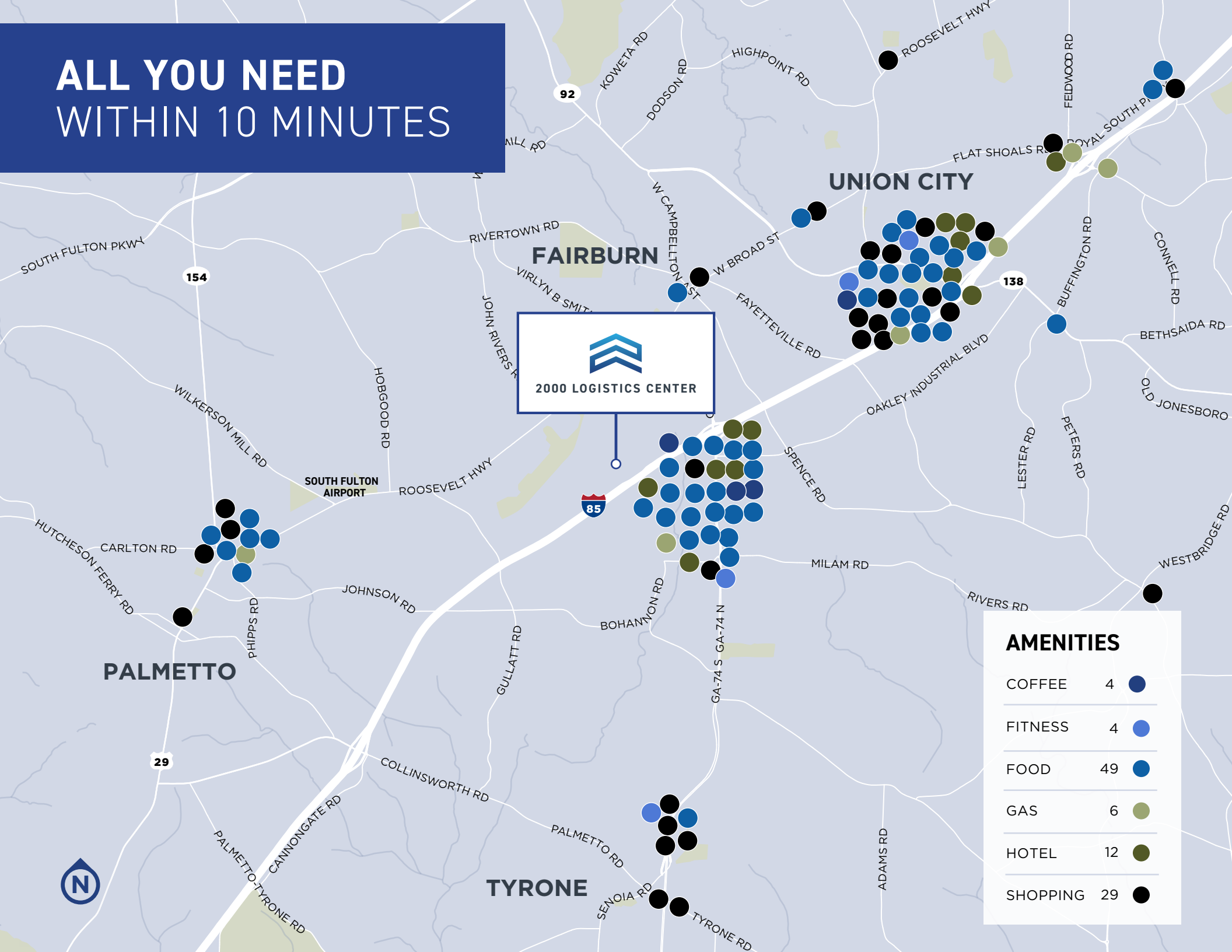


# ALL YOU NEED WITHIN 10 MINUTES



## AMENITIES

COFFEE	4	
FITNESS	4	
FOOD	49	
GAS	6	
HOTEL	12	
SHOPPING	29	





## 2000 LOGISTICS CENTER

**FOR MORE INFORMATION, PLEASE CONTACT:**

**LISA B. PITTMAN, SIOR**

Executive Director

+1 404 309 5309

[lisa.pittman@cushwake.com](mailto:lisa.pittman@cushwake.com)

**PAT MURPHY**

Managing Director

+1 770 853 8796

[pat.murphy@cushwake.com](mailto:pat.murphy@cushwake.com)

**ANDREW THURMAN**

Senior Associate

+1 404 682 3429

[andrew.thurman@cushwake.com](mailto:andrew.thurman@cushwake.com)

