

TRANS  
PACIFIC  
CENTRE

1000  
broadway

DOWNTOWN OAKLAND



**JOHN DOLBY**

Executive Director  
+1 510 267 6027  
[john.dolby@cushwake.com](mailto:john.dolby@cushwake.com)  
LIC #00870630

**RYAN DALTON**

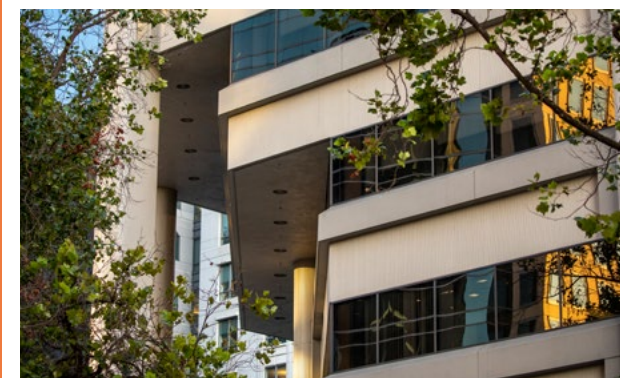
Director  
+1 510 891 5810  
[ryan.dalton@cushwake.com](mailto:ryan.dalton@cushwake.com)  
LIC #01809447







Located in the heart of Oakland's Downtown, Trans Pacific Centre 1000 Broadway is surrounded by the best accommodations, dining, and entertainment the city has to offer. The six story Class A building is a true-transit oriented property, steps from BART and offers abundant underground parking. The open functional floorplates provide spaces that work for one or work for many, offering tenants ultimate flexibility.



Energy Star Certified



**24** HOUR SECURITY

**140** RESTAURANTS  
within walking distance

**344,755** SQUARE FEET  
of flexible work space

**3**

**PUBLIC TRANSIT OPTIONS**  
BART, AC Transit, B Shuttle

**360**

**PARKING STALLS**  
on 2 underground  
parking levels





## MODERN CREATIVE SPACE IN OAKLAND'S MOST ACCESSIBLE LOCATION

- Across from 12th Street/Oakland City Center BART Station
- AC Transit Bus Stop on-site
- 1 Block from Free Broadway Shuttle stop
- Close Proximity to freeway 880, 580, and 980

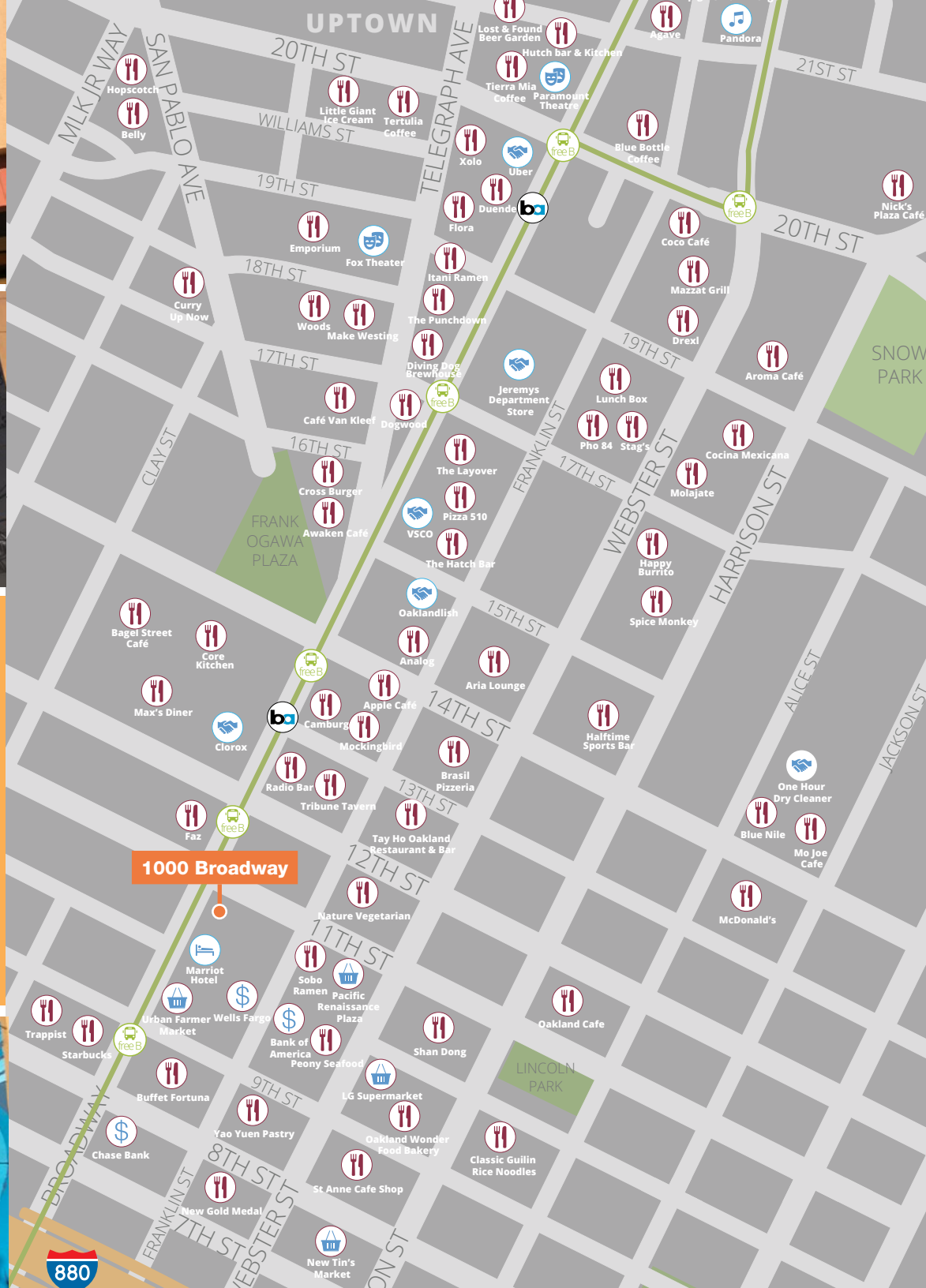




WITHIN BLOCKS OF  
1000 BROADWAY...

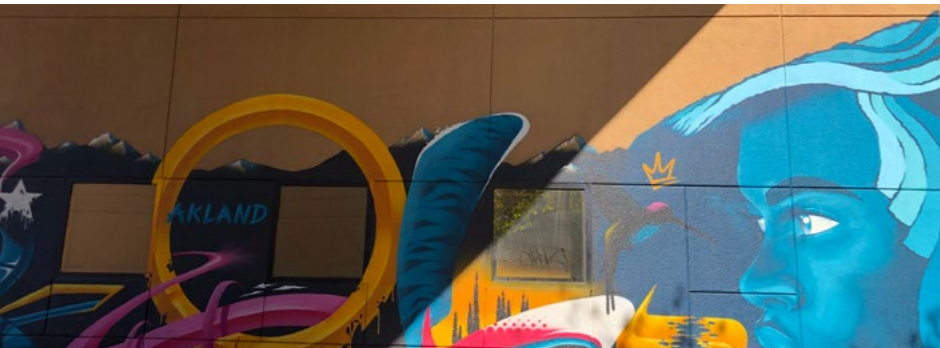






## ACCESS & AMENITIES

- Marriott City Center, Marriott Courtyard, and Hampton Inn are all within 1-2 blocks
- Amtrak is 10 blocks away
- Ferry is 8 blocks away
- Steps from numerous restaurants, coffee shops and bars





# AVAILABILITIES

FLOOR	SUITE	SIZE (Sq Ft)	AVAILABLE	COMMENTS
1	150	25,973	Now	Fantastic open space with 6 story high ceilings. Ground floor with lots of light.
1	160	2,031	Now	Restaurant space with existing type 1 hood, fire suppression system, grease trap.
2	200-I	822	Now	Small executive suite and one private office.
2	200-K	562	Now	2 private offices, shared conference room and kitchen.
2	230	12,601	Now	Nice open space with views overlooking both atriums. All new finishes. Move in ready.
2	270	627	Now	2 private offices, Broadway Street view.
2	288	577	Now	1 private office.
2	292	4,569	Now	Large focus rooms, 4 private offices, and kitchen.
2	295	12,001	Now	Exterior deck. 7 private offices. Breakroom. Large open area.
3	300	13,505	Now	22 private offices and very large boardroom.
3	310	9,286	Now	Exterior and atrium views, 8 private offices, breakroom, large conference room.
3	330	3,011	Now	Atrium views. Breakroom. Two offices and a conference room.
3	350	2,775	Now	4 private offices, breakroom, large open area with lots of glass.
3	355	1,154	Now	Small suite, 2 offices.
3	360	8,563	Now	Extensive exterior window line with San Francisco views, open areas with larger conference rooms.
3	398	5,832	Now	Exterior and atrium views, 5 large offices, large open area and conference room.
4	410	5,751	Now	Great glass exposure for natural light.
4	415	3,334	Now	Large open area, Kitchen, two private offices, server room and conference room, atrium views.
4	425	2,392	Now	3 private offices, open area, large conference room, breakroom, nice views.
4	430	3,448	Now	Atrium facing space. Double door entry off elevator bank. Open area.
4	450	20,352	Now	37 private offices, 3 conference rooms, divisible
4	475	3,255	Now	Large conference room, 4 private offices and breakroom.
5	500	64,859	Now	Full floor opportunity. Large floor plate features two interior atriums and two sets of restrooms. Floor plan is hypothetical.
6	600	30,772	Now	San Francisco Bay views.
6	640	5,434	Now	Large boardroom. Kitchen.
6	650	4,845	Now	Atrium facing unit. 10 private offices. 1 large conference room. Kitchen/breakroom. File/storage room.

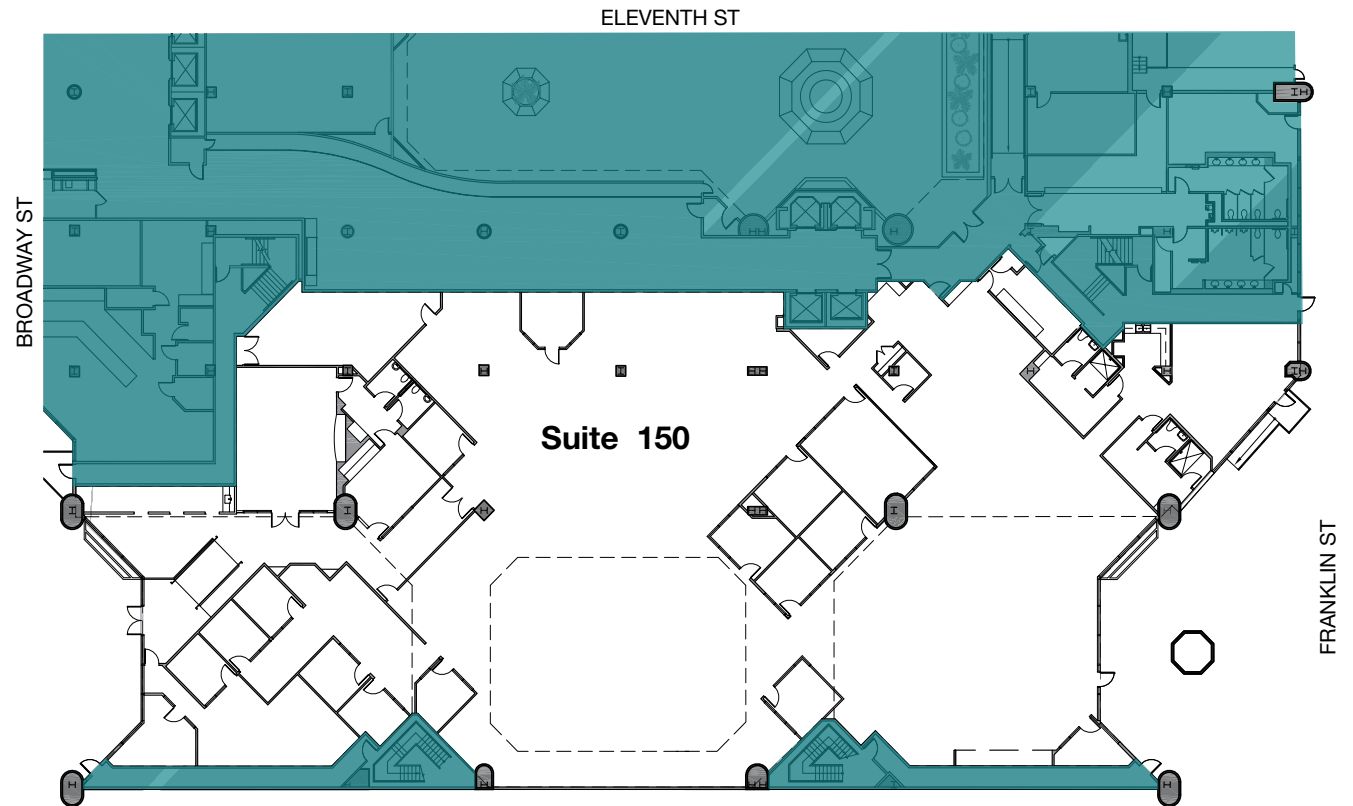




# FLOOR PLAN

## SUITE 150 | 25,973 RSF

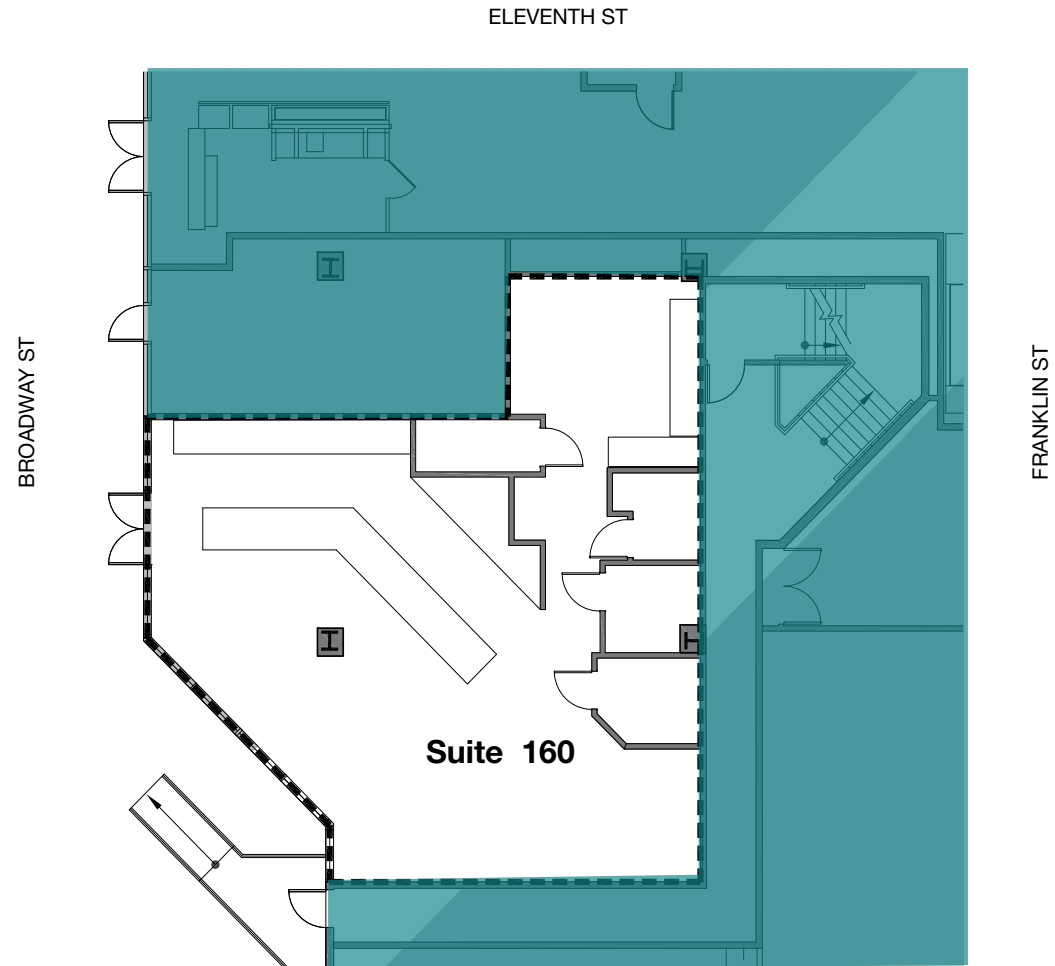
- Fantastic open space
- 6 Story high ceilings
- Ground floor with lots of light



# FLOOR PLAN

## SUITE 160 | 2,031 SF

- Restaurant Space
- Existing type 1 hood
- Fire suppression system
- Grease trap

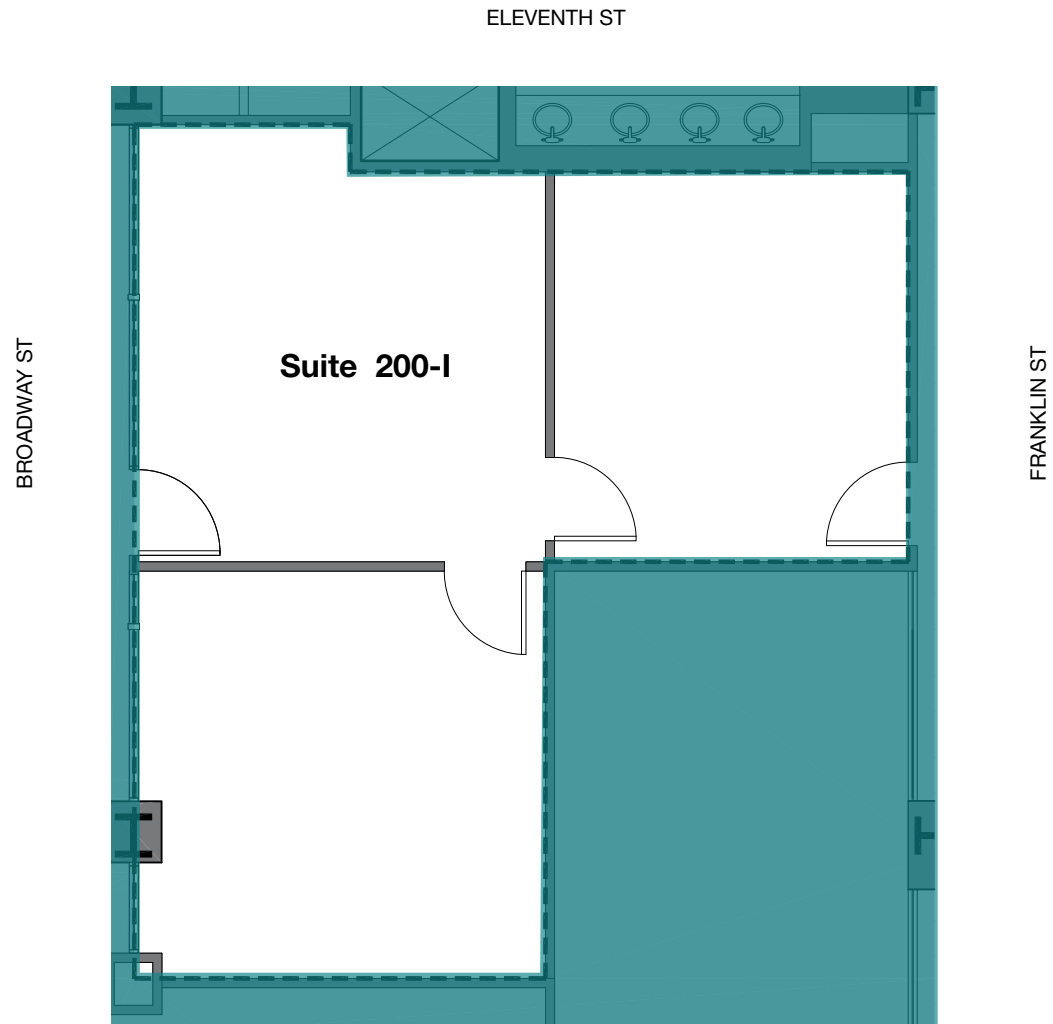




# FLOOR PLAN

## SUITE 200-I | 822 SF

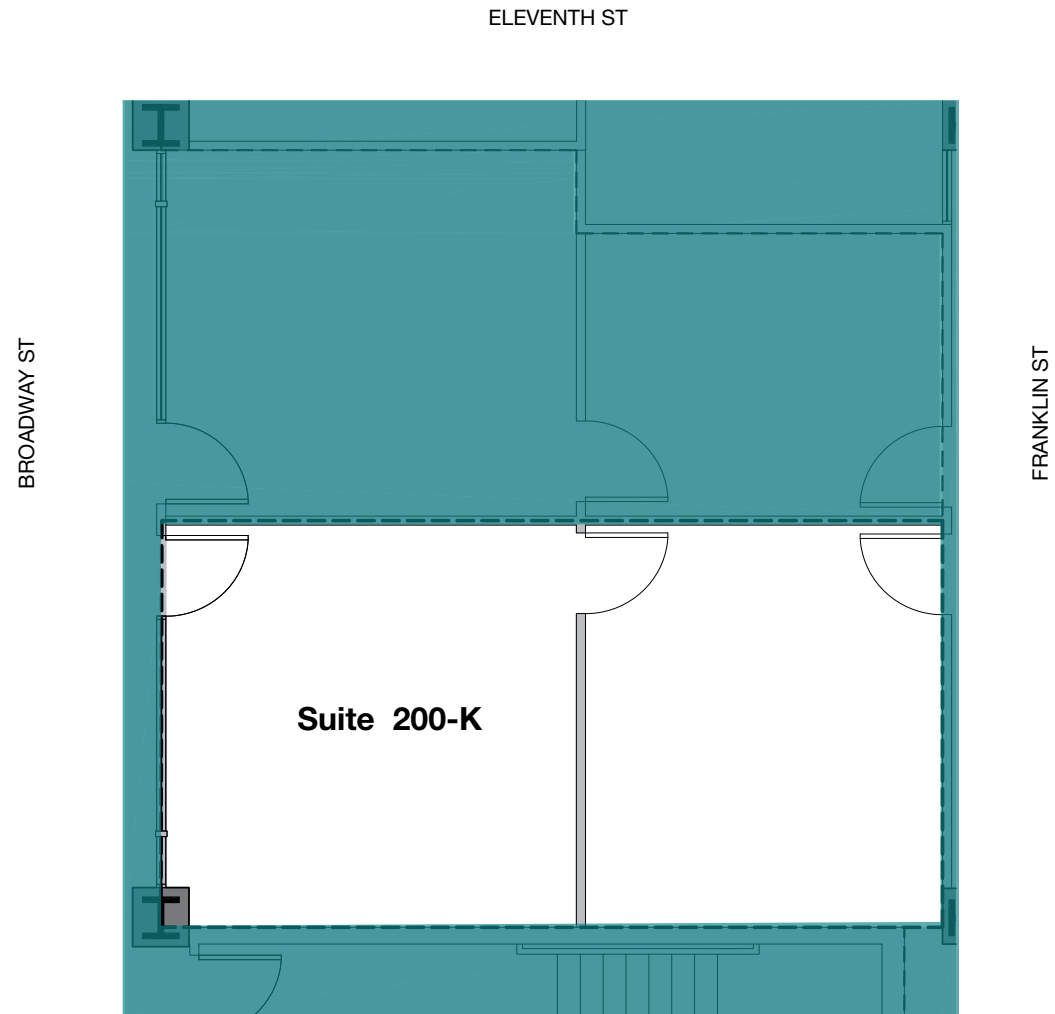
- Small executive suite
- One private office



# FLOOR PLAN

## SUITE 200-K | 562 SF

- 2 private offices
- Shared kitchen
- Shared conference rooms

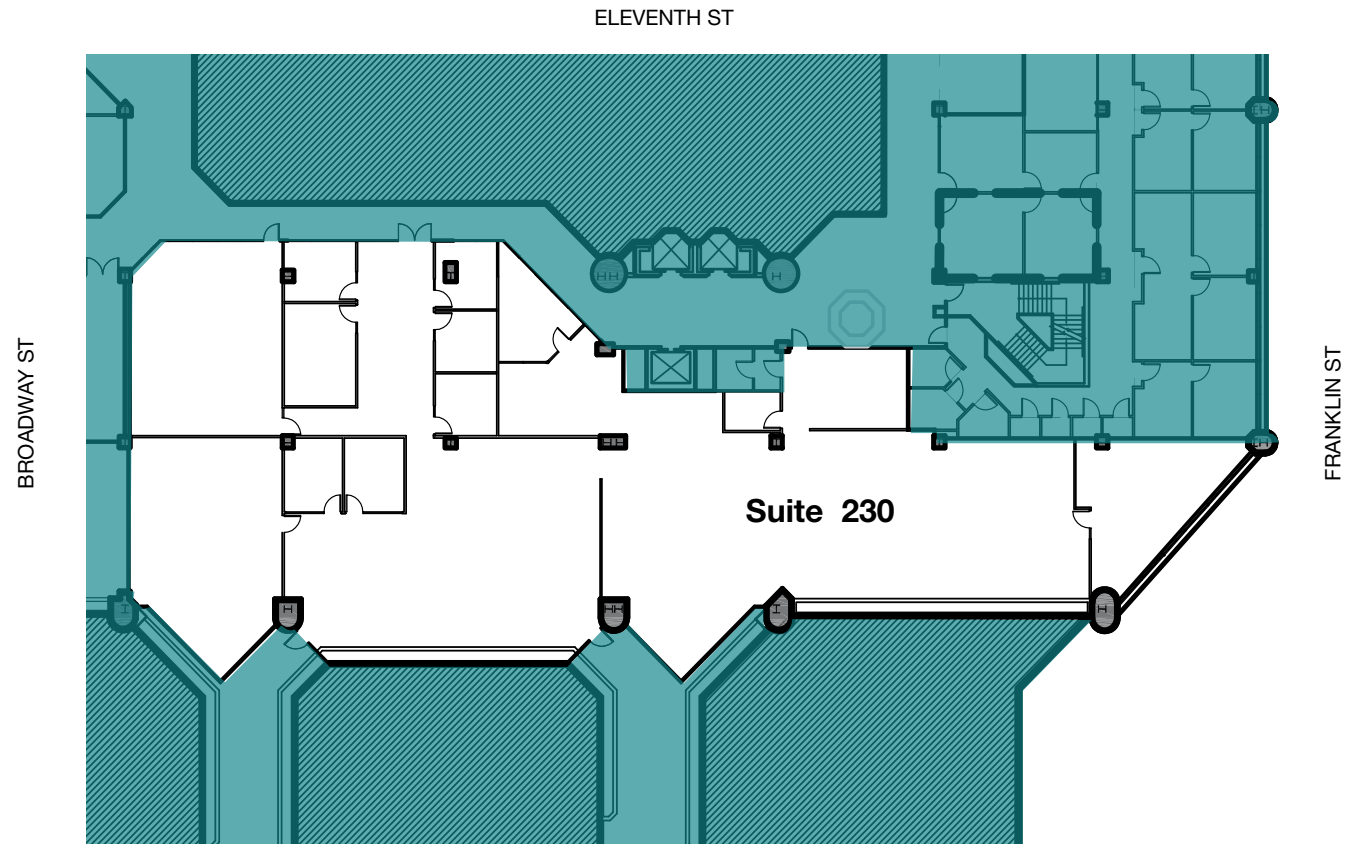




# FLOOR PLAN

## SUITE 230 | 12,601 SF

- Nice open space with views overlooking both atriums
- All new finishes
- Move in ready

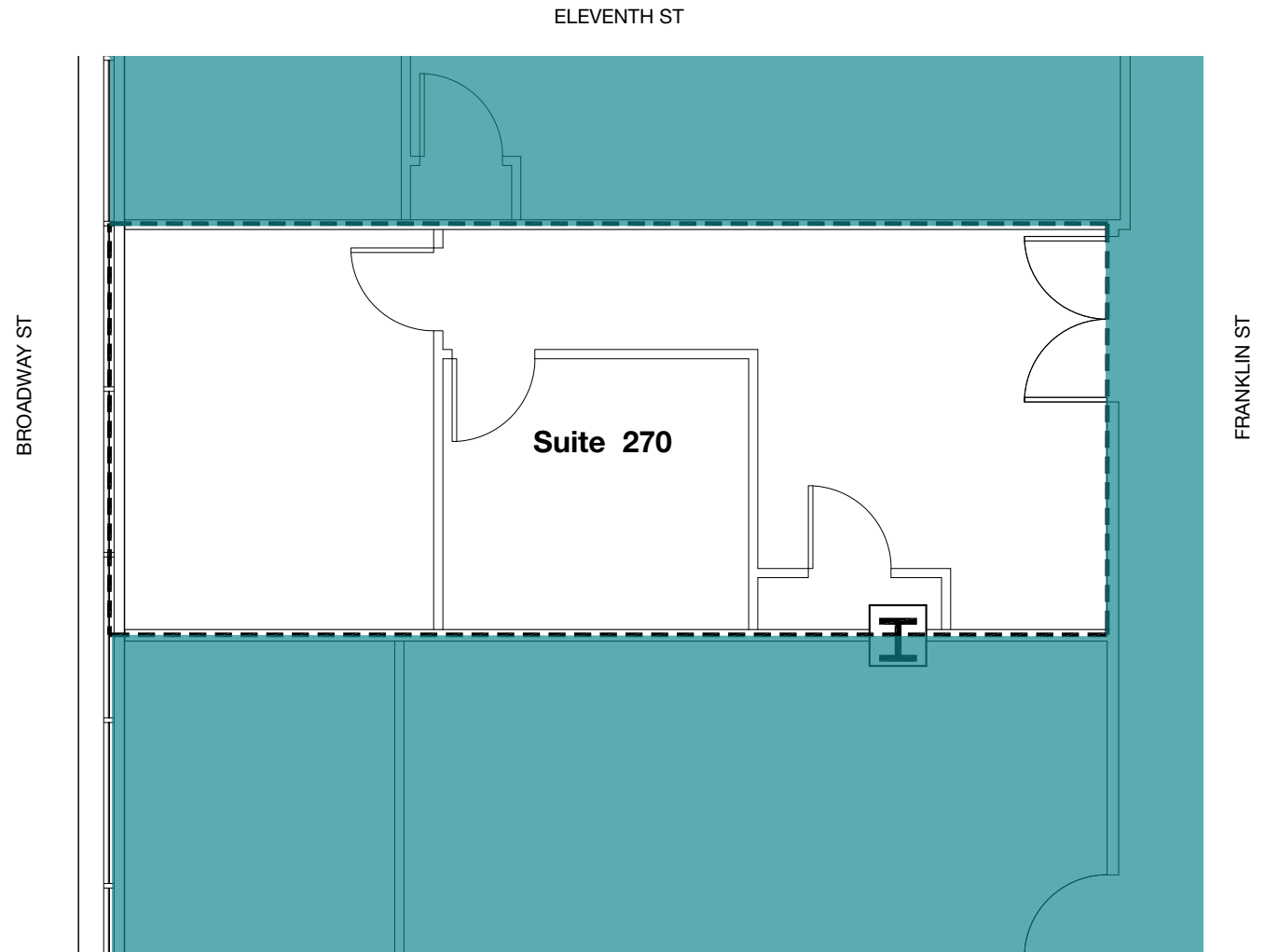




# FLOOR PLAN

## SUITE 270 | 627 SF

- Two private offices
- Broadway Street view

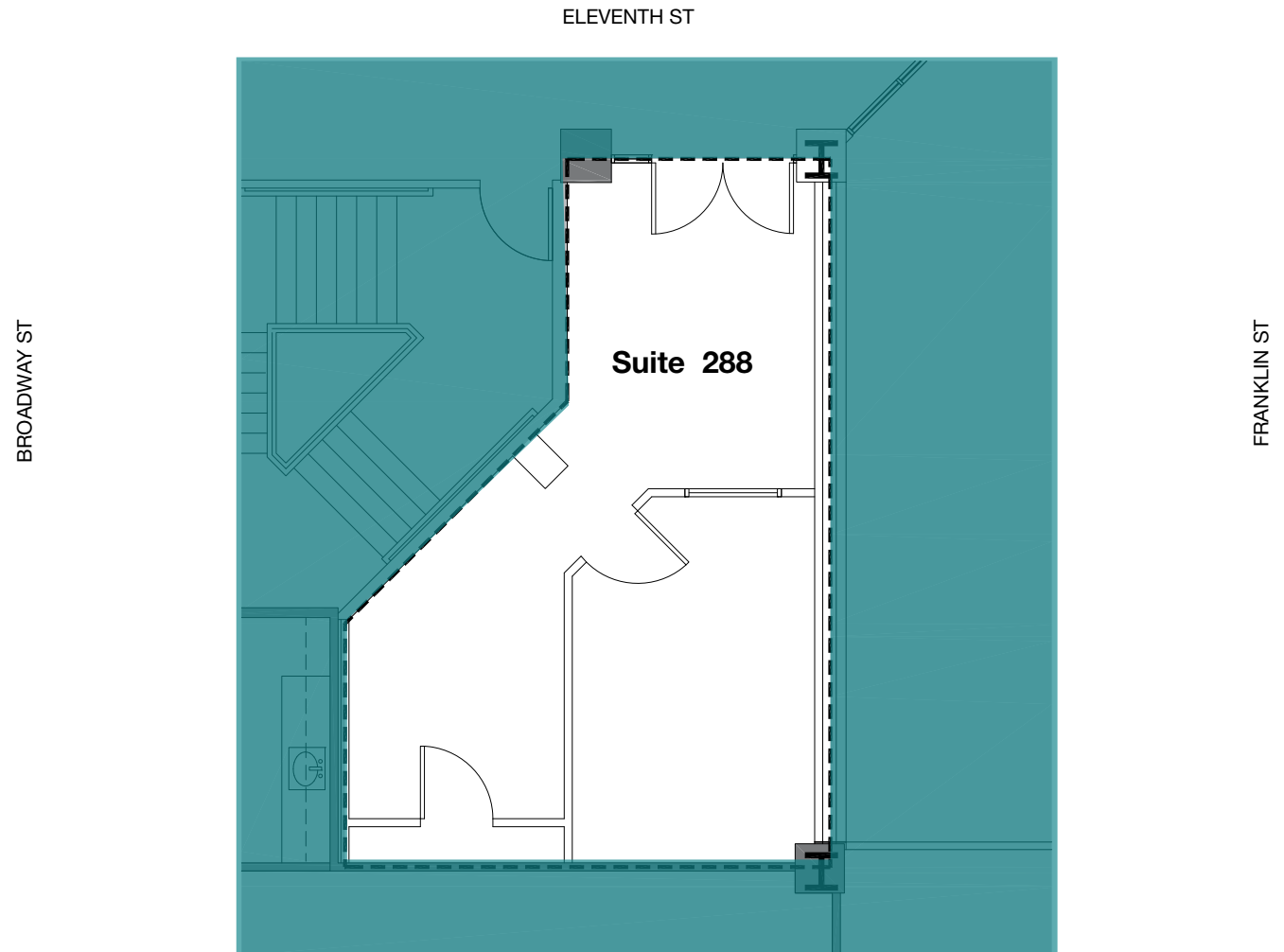




# FLOOR PLAN

## SUITE 288 | 577 SF

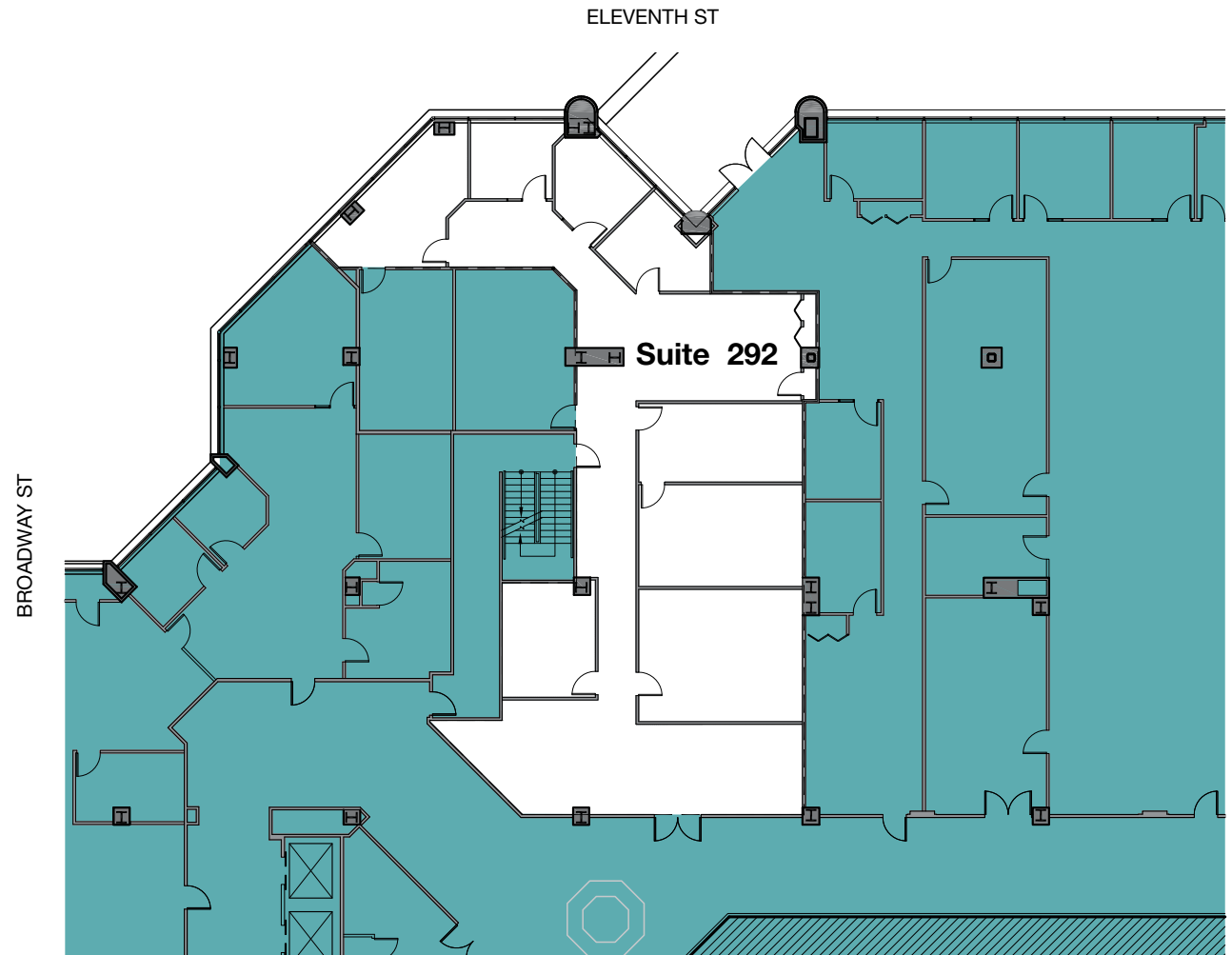
- One private office



# FLOOR PLAN

## SUITE 292 | 4,569 SF

- Large focus rooms
- 4 private offices
- Breakroom

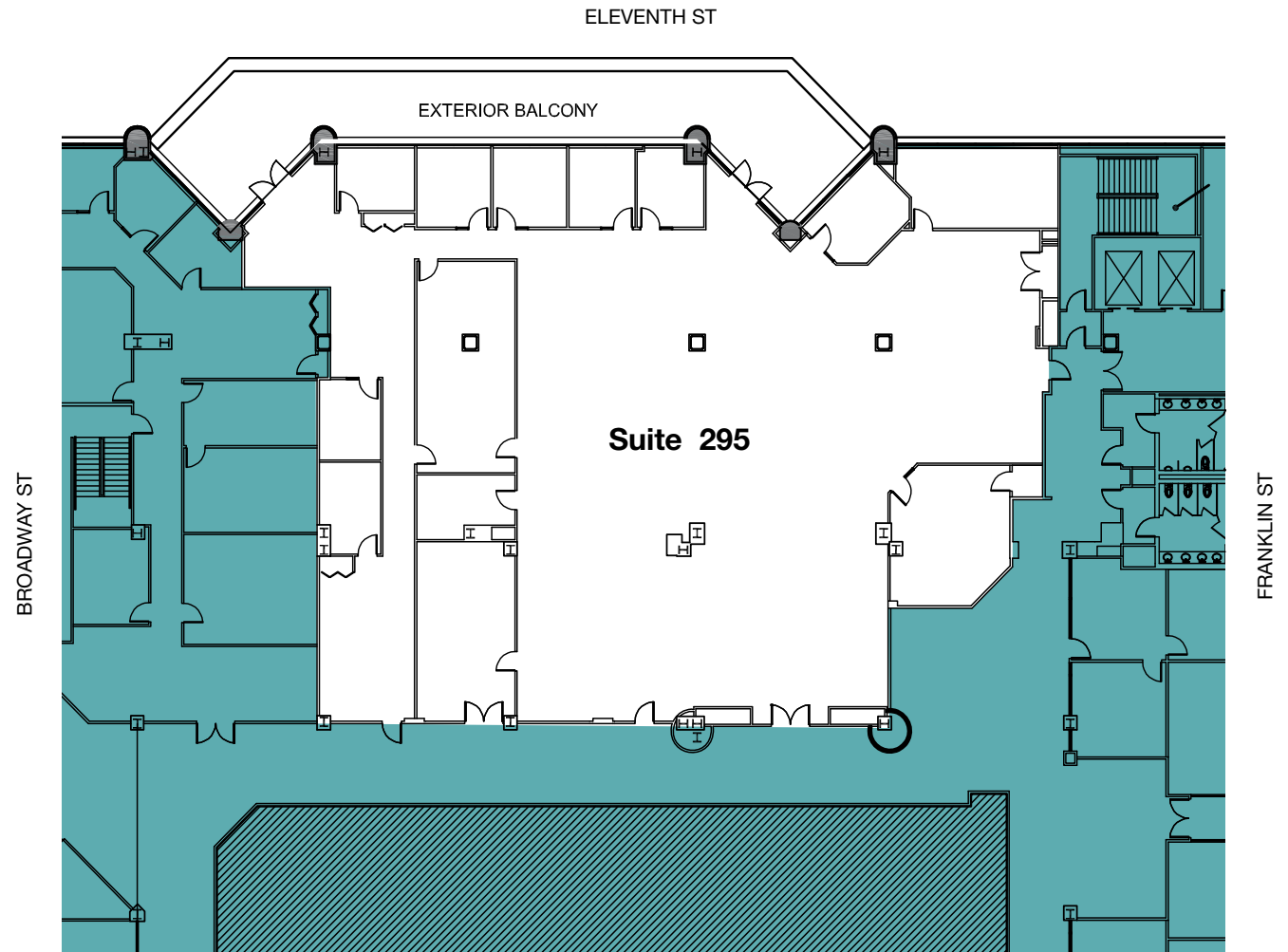




# FLOOR PLAN

## SUITE 295 | 12,001 SF

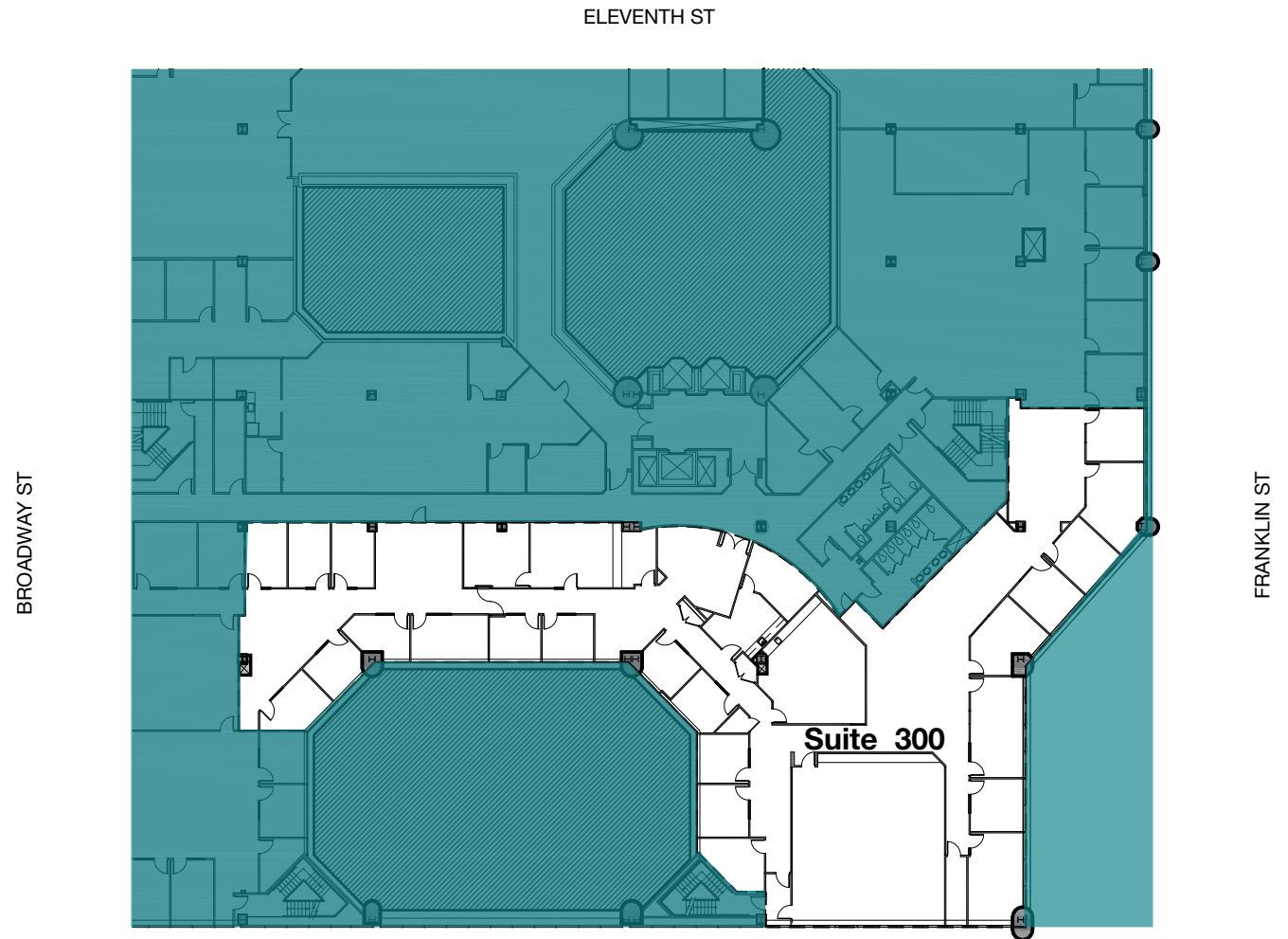
- Exterior deck
- 7 private offices
- Breakroom
- Large open area



# FLOOR PLAN

## SUITE 300 | 13,505 SF

- 22 private offices
- Very large boardroom

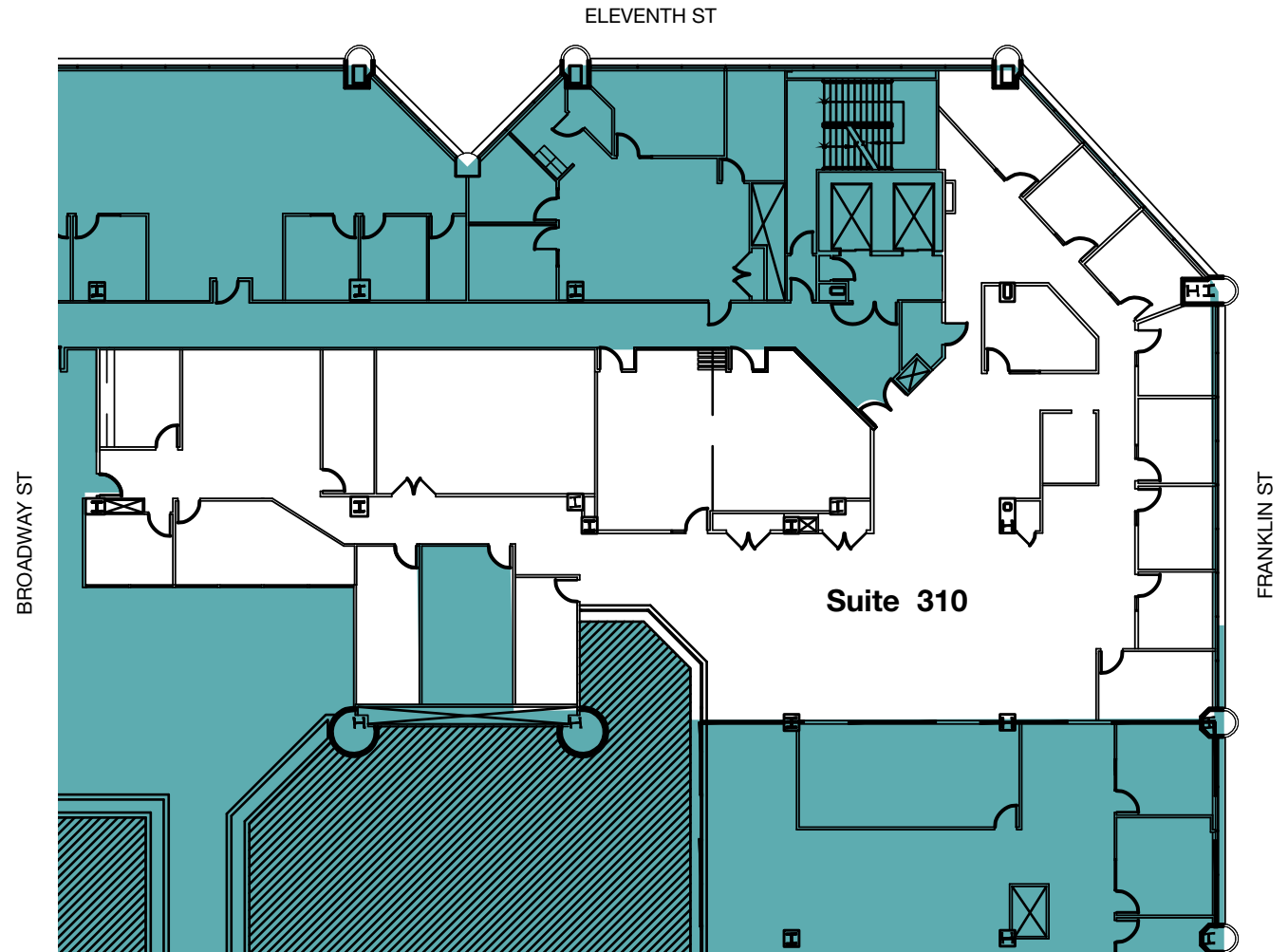




# FLOOR PLAN

## SUITE 310 | 9,286 SF

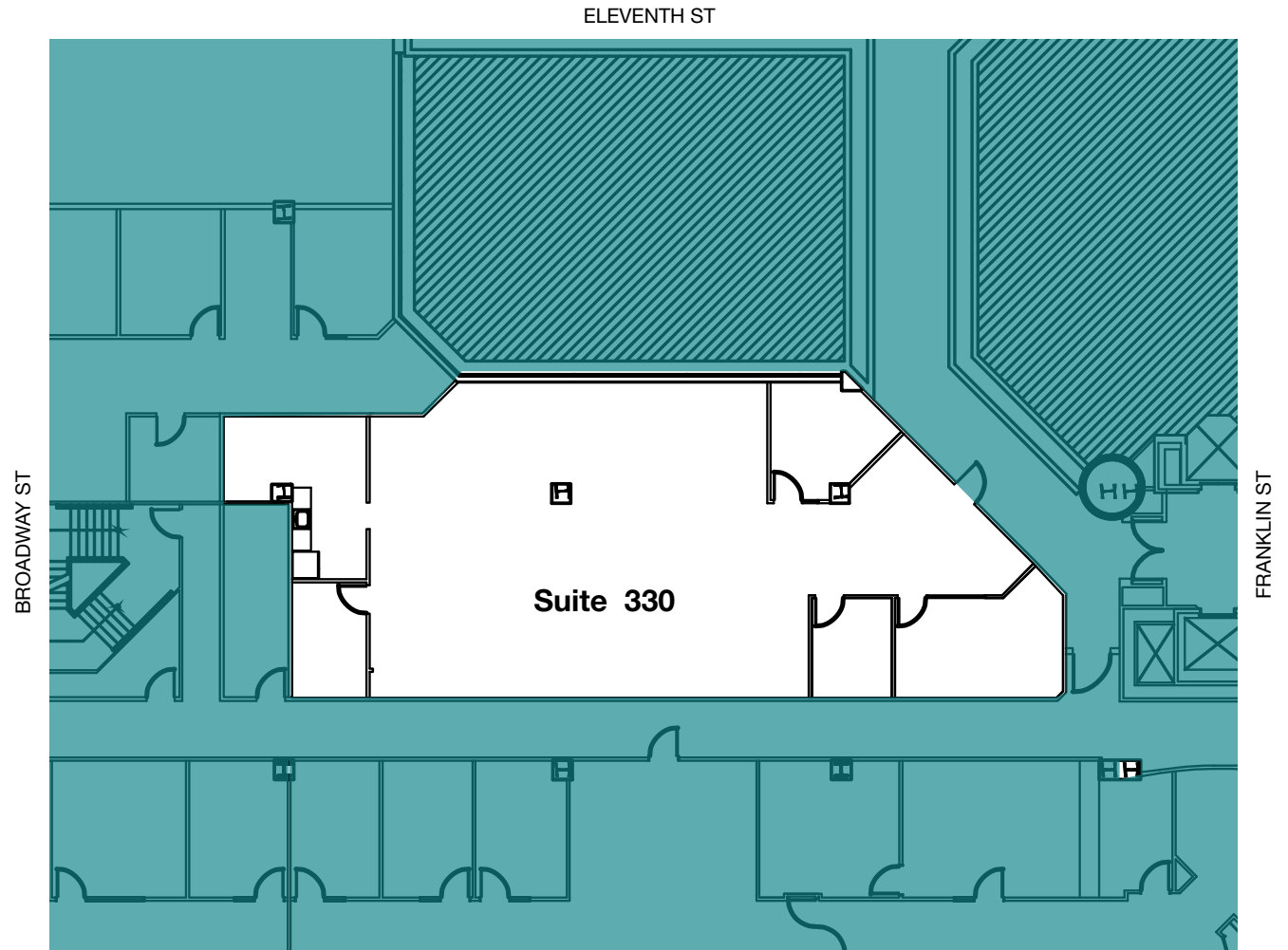
- Exterior and atrium views
- 8 private offices
- Breakroom
- Large conference room



# FLOOR PLAN

## SUITE 330 | 3,011 SF

- Atrium views
- Breakroom
- Two offices
- Conference room

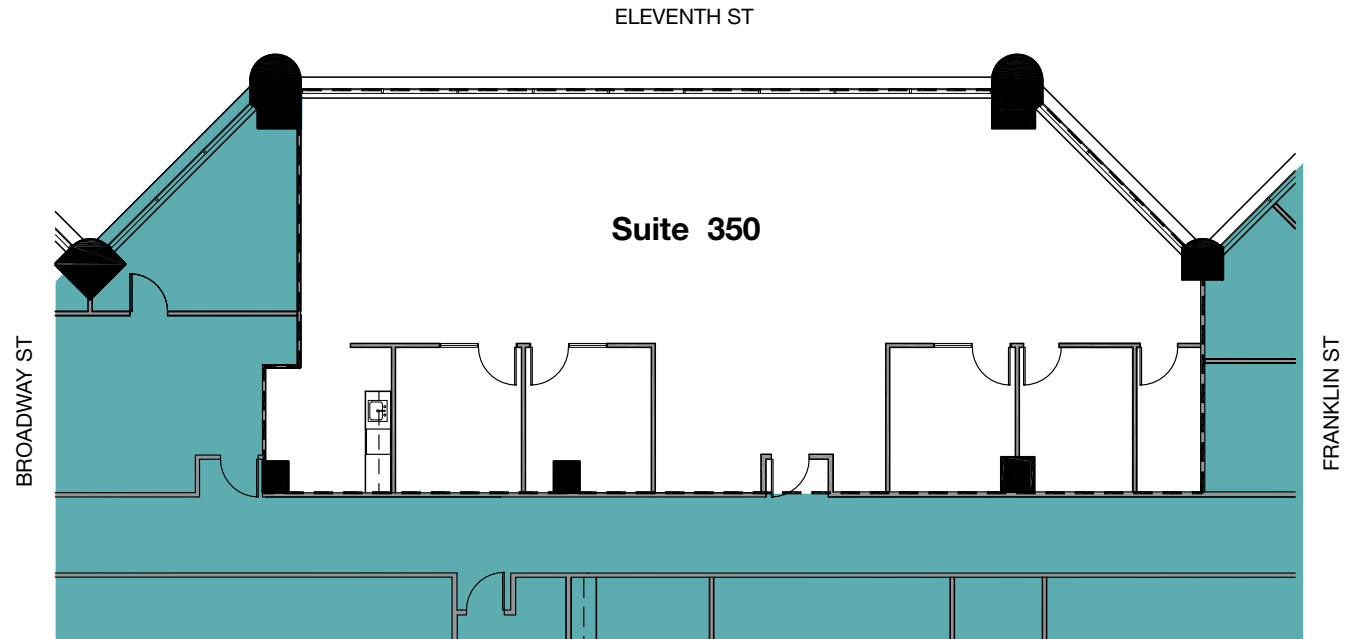




# FLOOR PLAN

## SUITE 350 | 2,775 SF

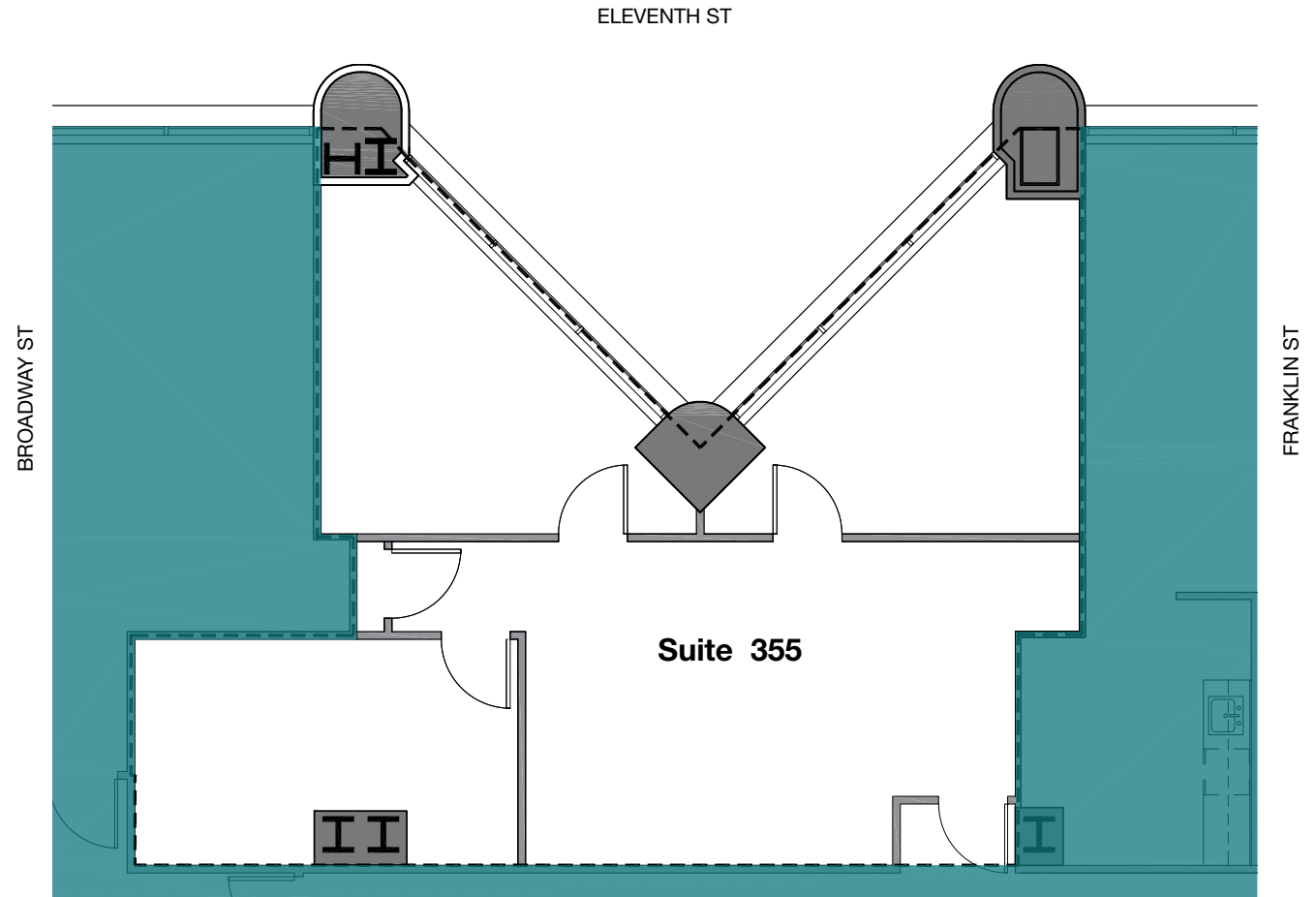
- 4 private offices
- Breakroom
- Large open area with lots of glass



# FLOOR PLAN

## SUITE 355 | 1,154 RSF

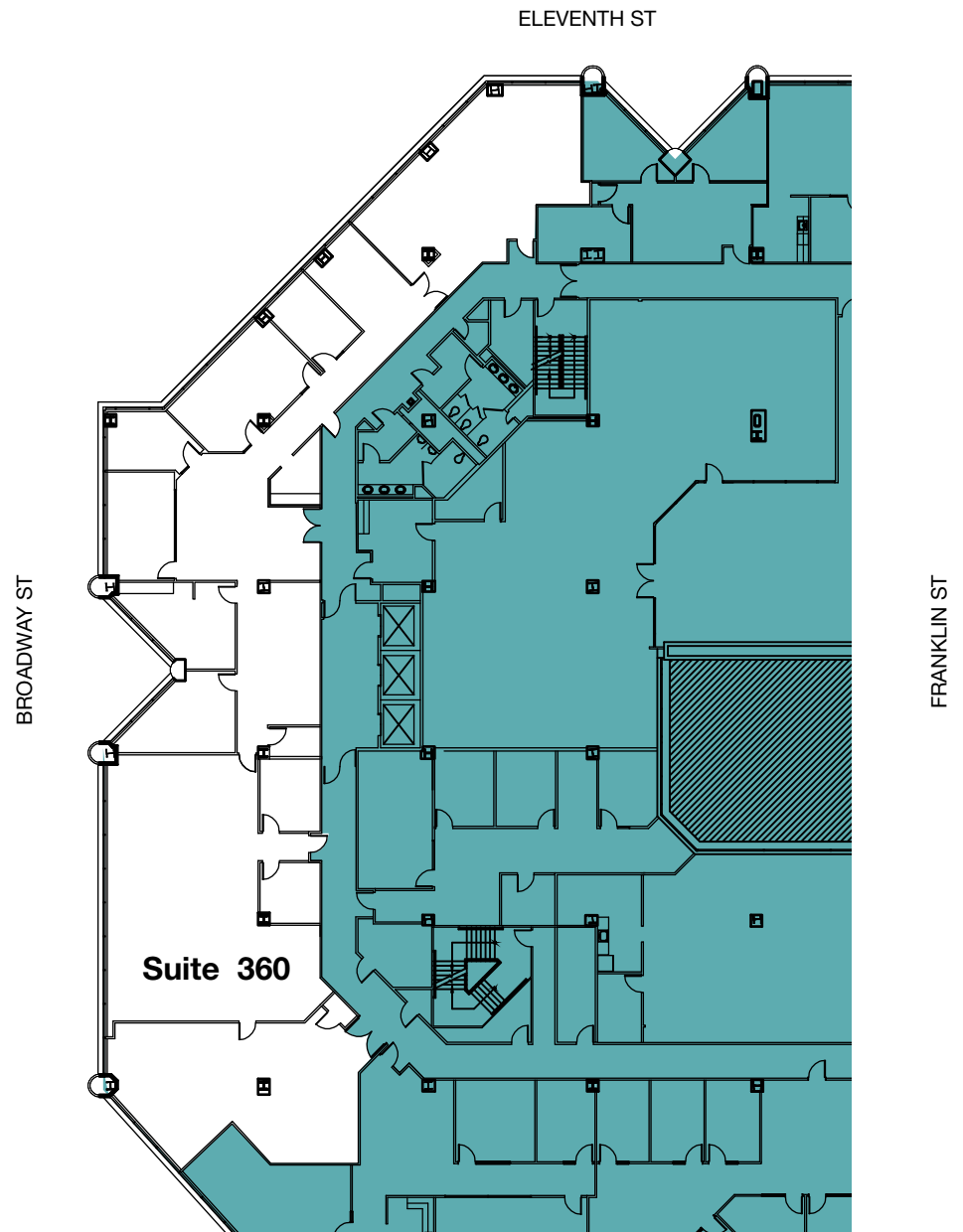
- Small suite
- 2 offices
- Breakroom



# FLOOR PLAN

## SUITE 360 | 8,563 SF

- Extensive exterior window line with San Francisco views
- Open areas with larger conference rooms

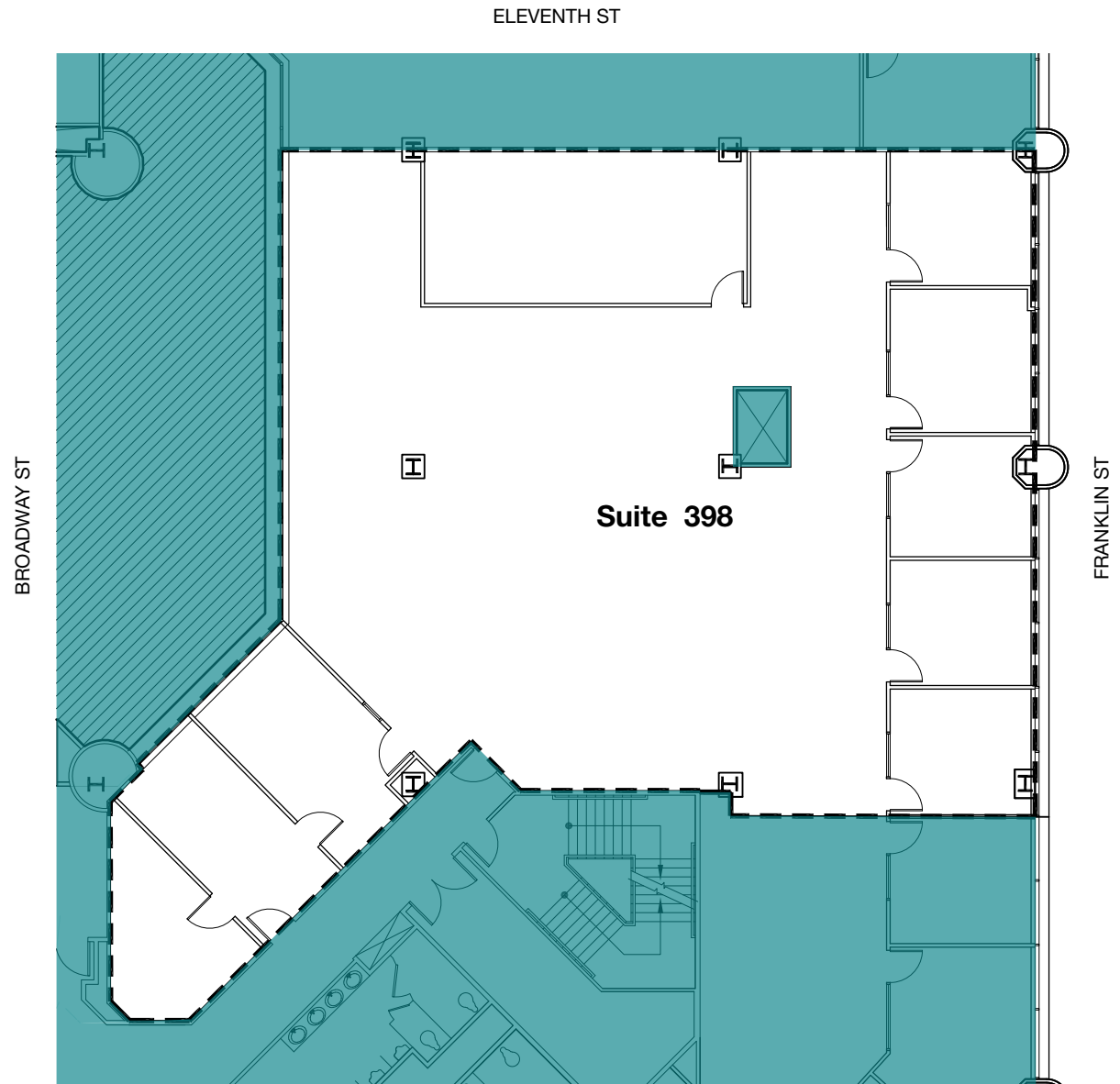




# FLOOR PLAN

## SUITE 398 | 5,832 SF

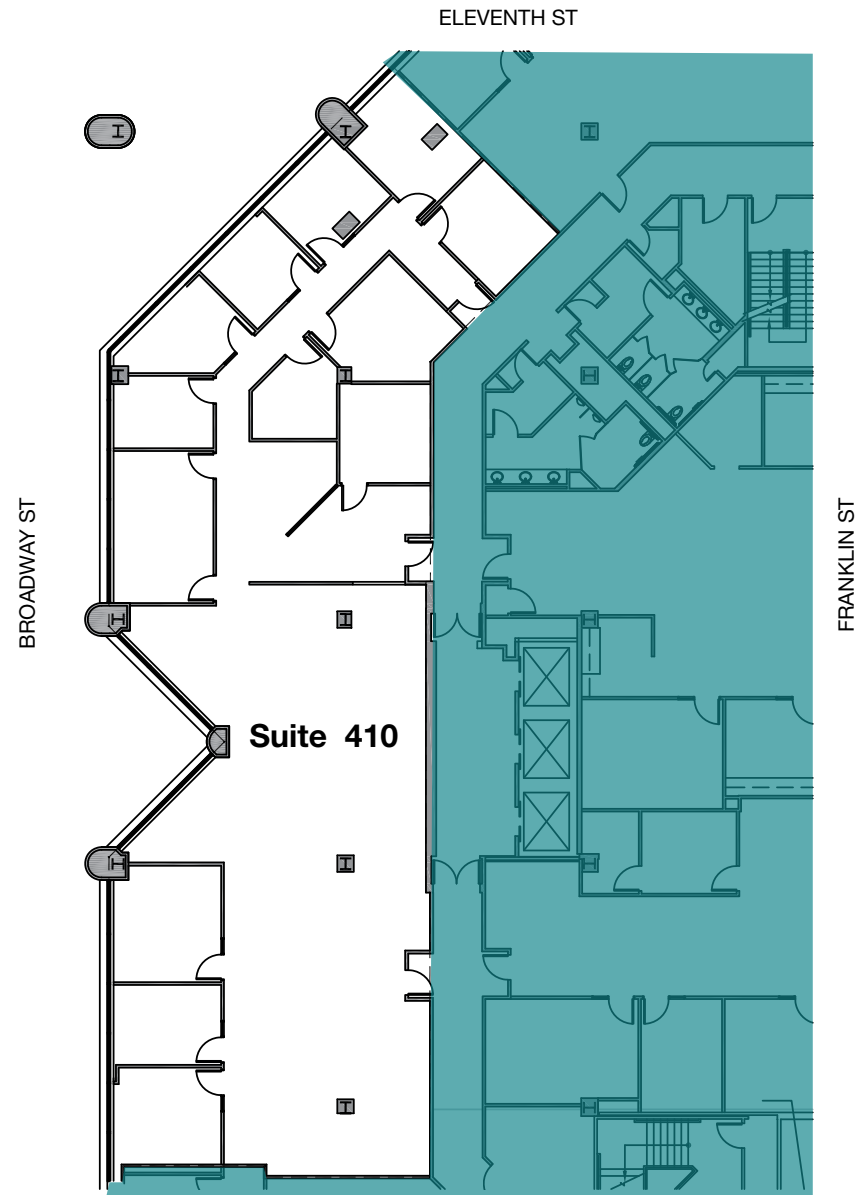
- Exterior and atrium views
- 5 large offices
- Large open area and conference room



# FLOOR PLAN

## SUITE 410 | 5,751 SF

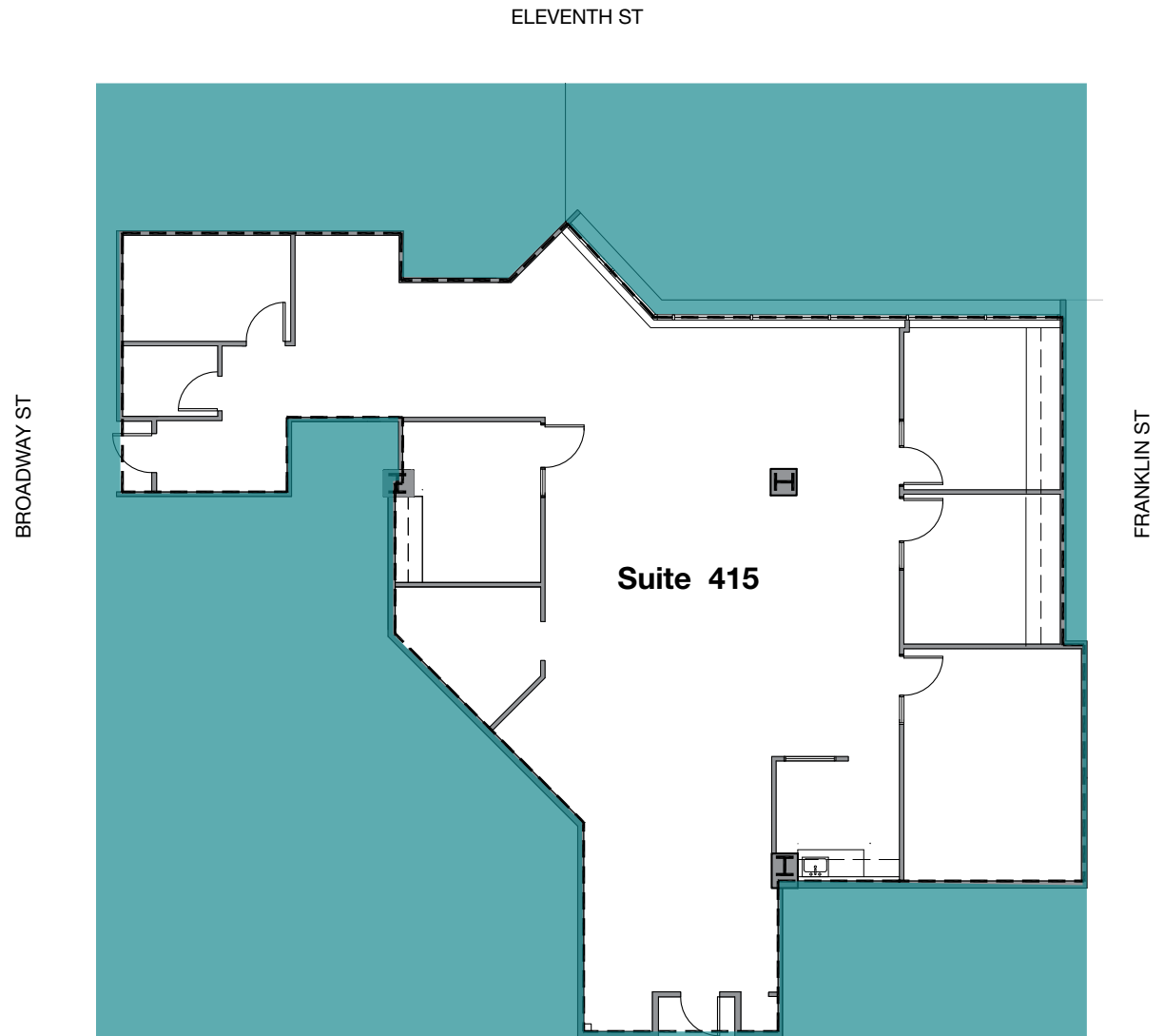
- Great glass exposure for natural light



# FLOOR PLAN

## SUITE 415 | 3,334 SF

- Large open area
- Kitchen
- Two private offices
- Server room
- Conference room
- Atrium views

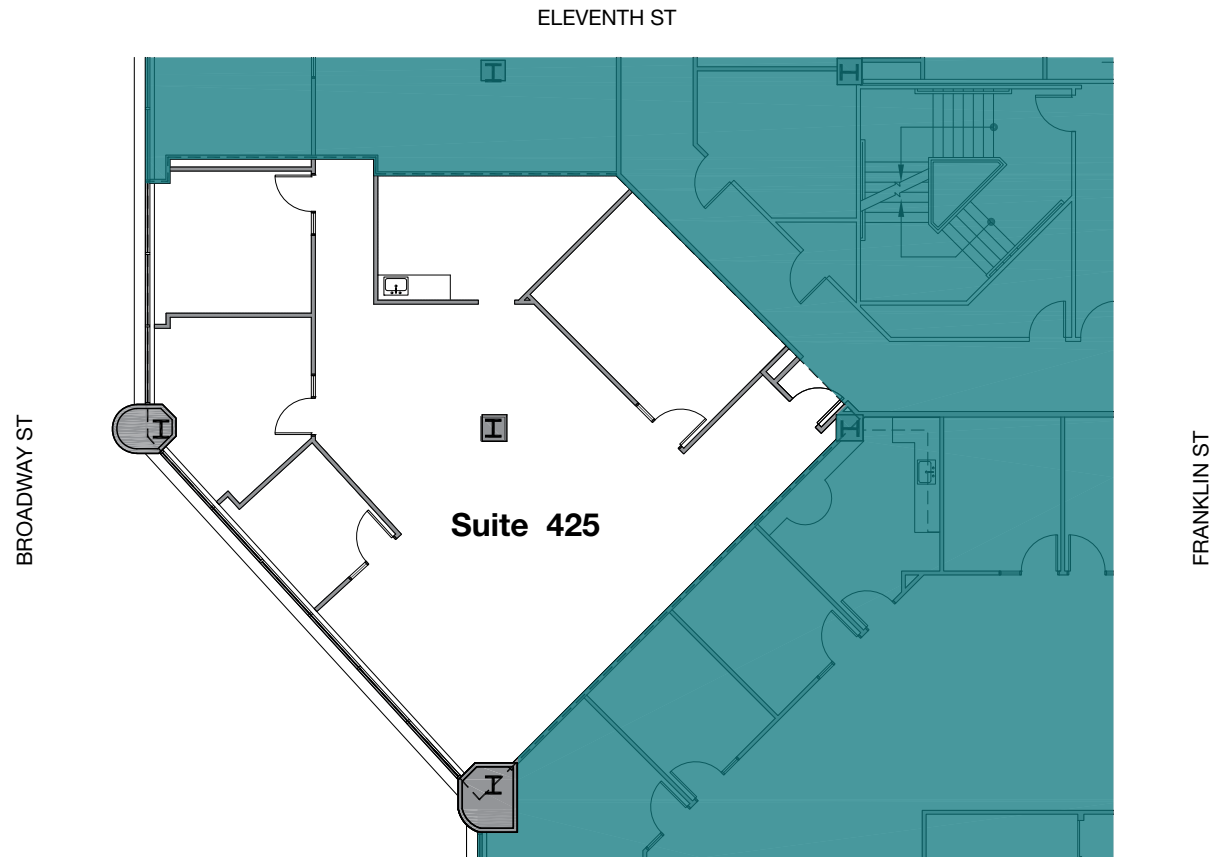




# FLOOR PLAN

## SUITE 425 | 2,392 RSF

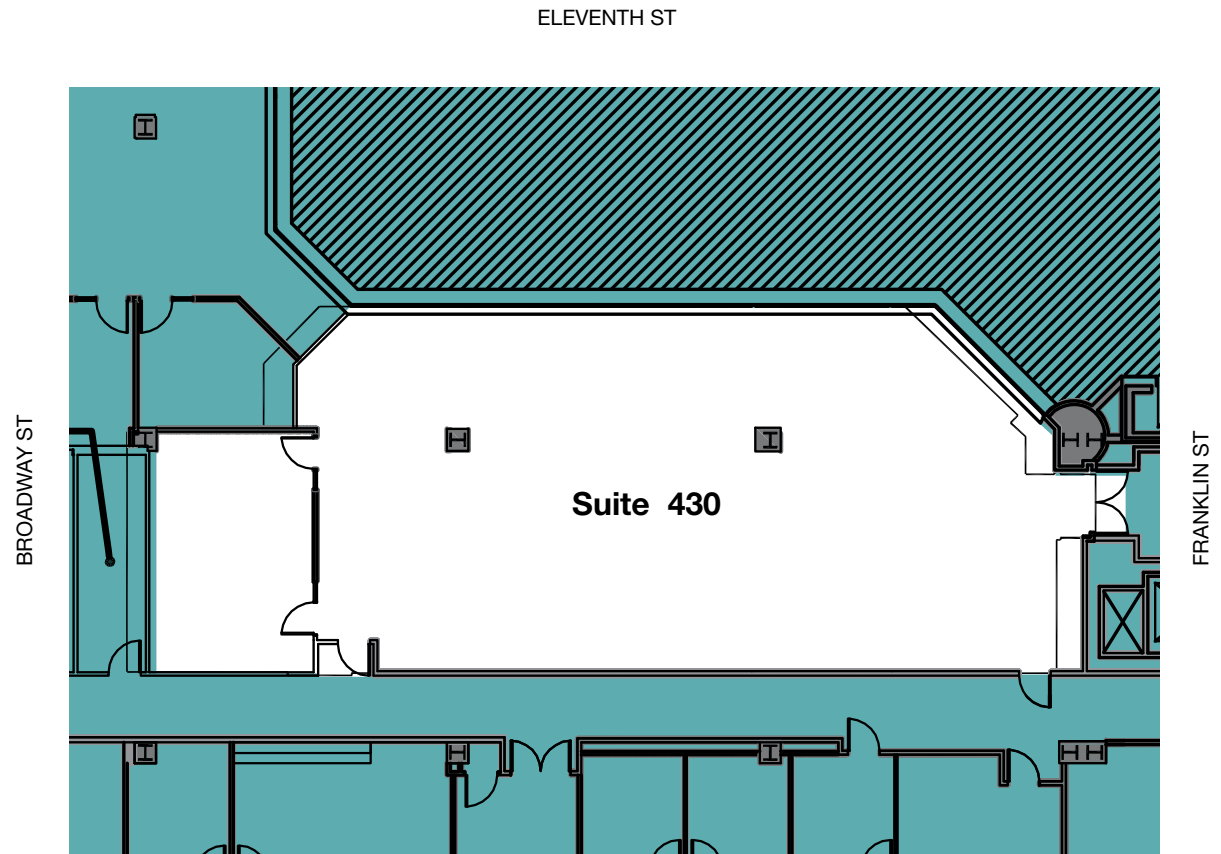
- 3 private offices
- Large conference room
- Breakroom
- Open area
- Nice view



# FLOOR PLAN

## SUITE 430 | 3,448 SF

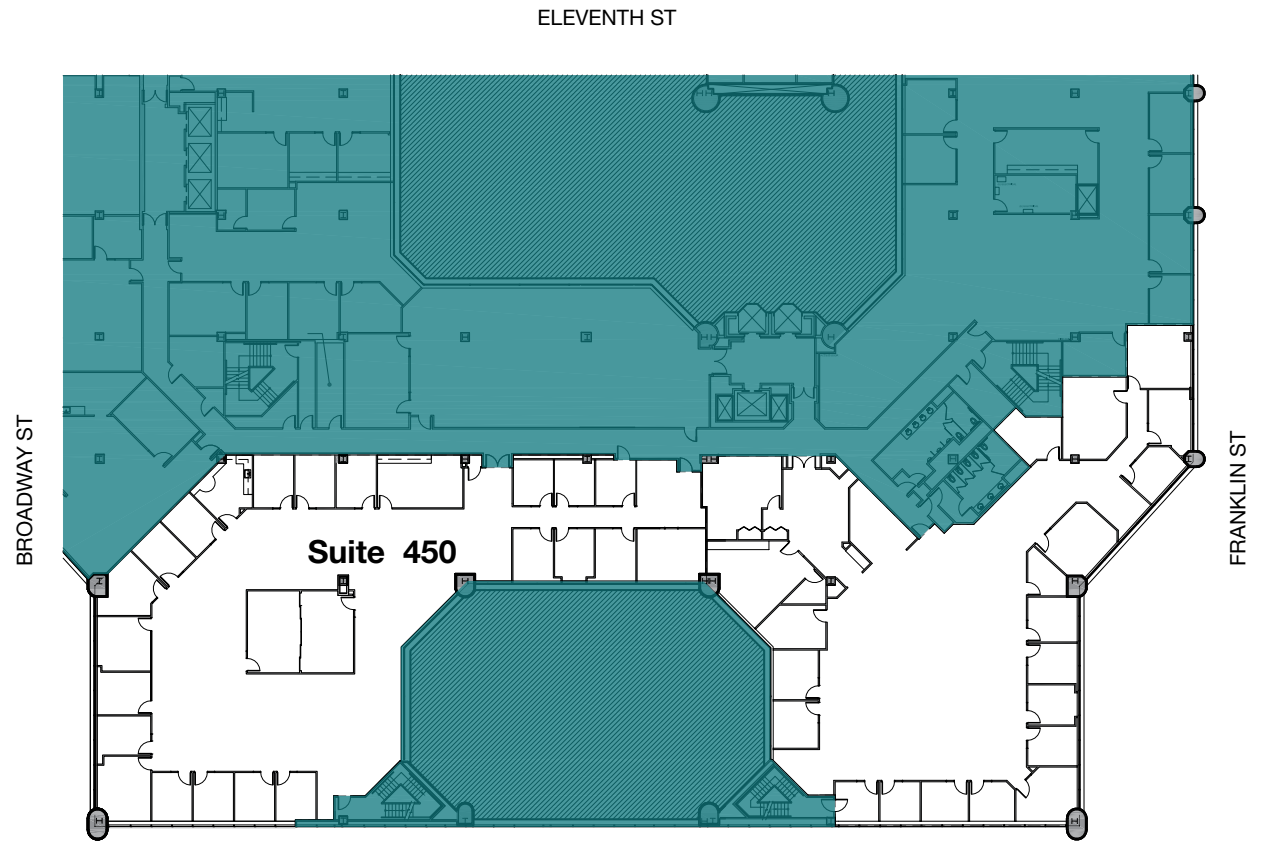
- Atrium facing space
- Double door entry off elevator bank
- Open area



# FLOOR PLAN

## SUITE 450 | 20,352 SF

- 37 Private offices
- 3 Conference rooms
- Divisible

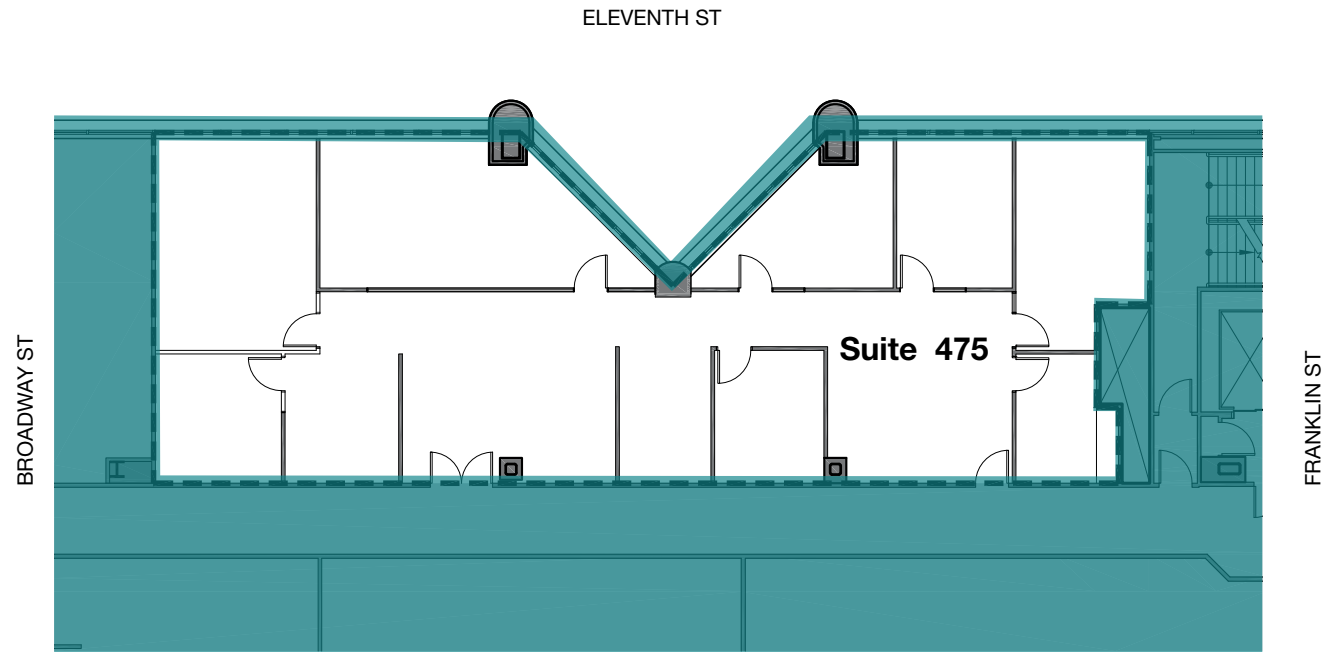




# FLOOR PLAN

## SUITE 475 | 3,255 SF

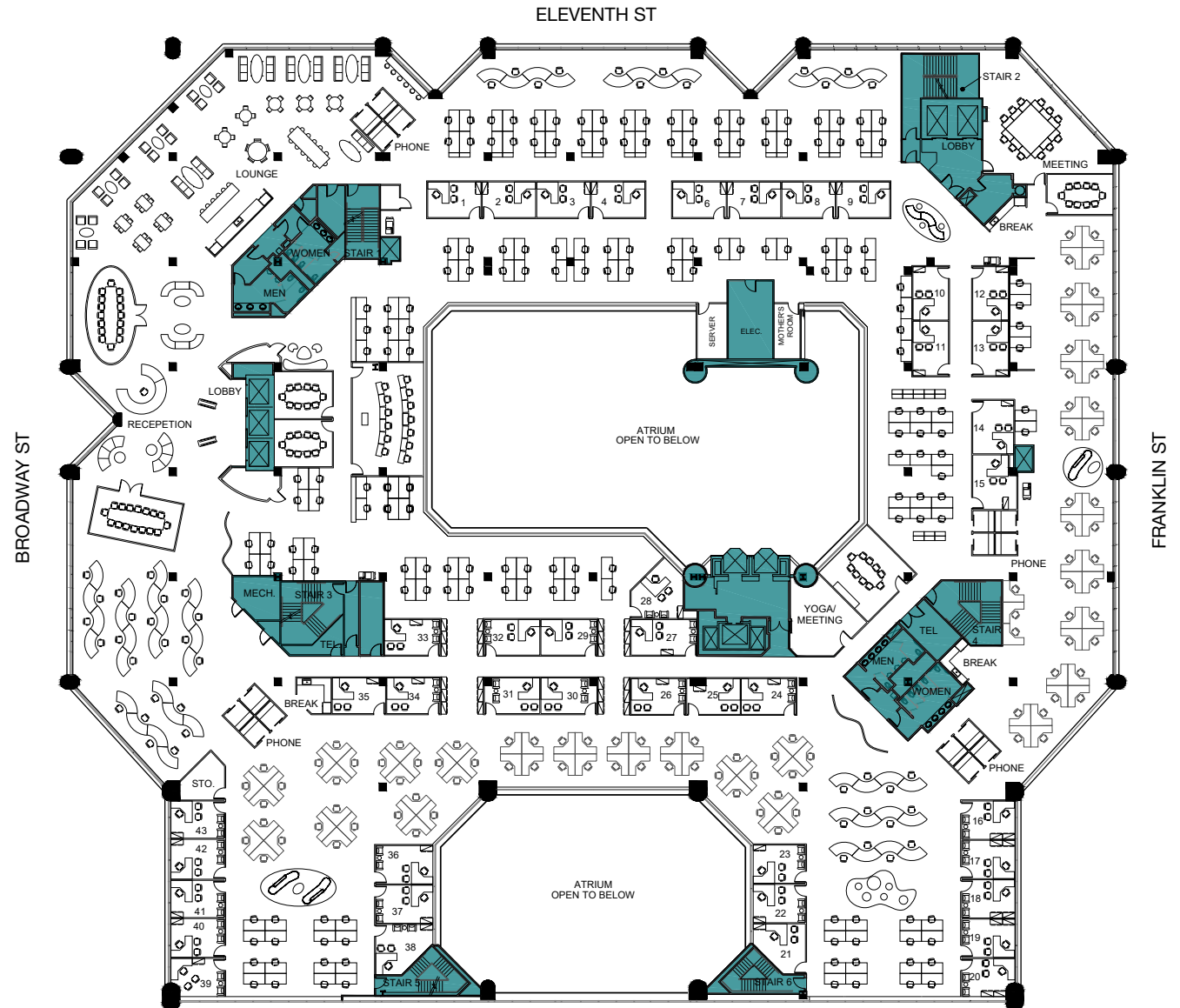
- 4 private offices
- Large conference room
- Breakroom



# CONCEPTUAL PLAN 1

## SUITE 500 | 64,859 SF

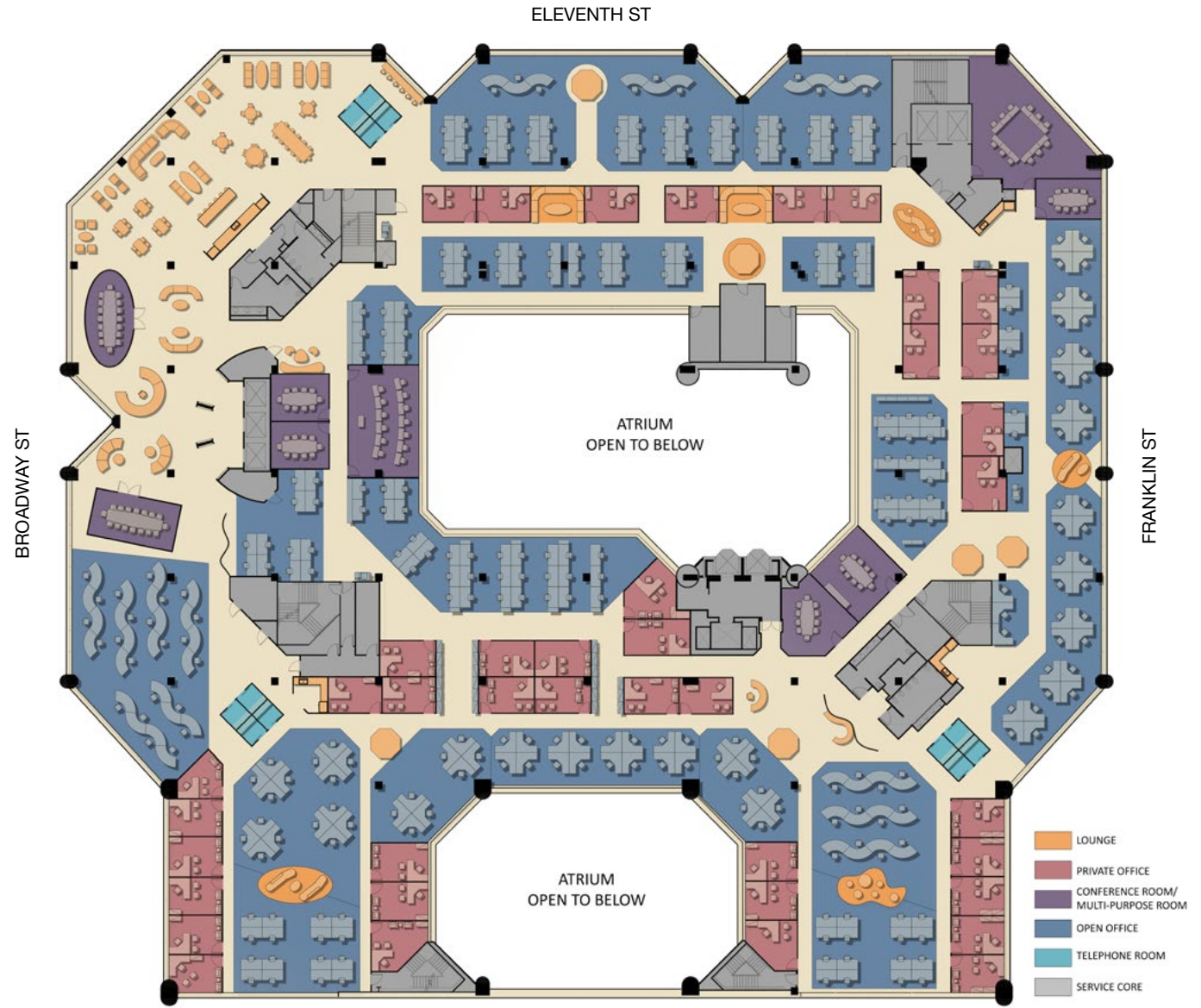
- Full floor opportunity
- San Francisco Bay views
- 13' 6" ceiling heights
- 2 interior atrium views
- 7 conference rooms
- 43 private offices
- 2 sets of restrooms
- 2 sets of elevator banks



# CONCEPTUAL PLAN 2

## SUITE 500 | 64,859 SF

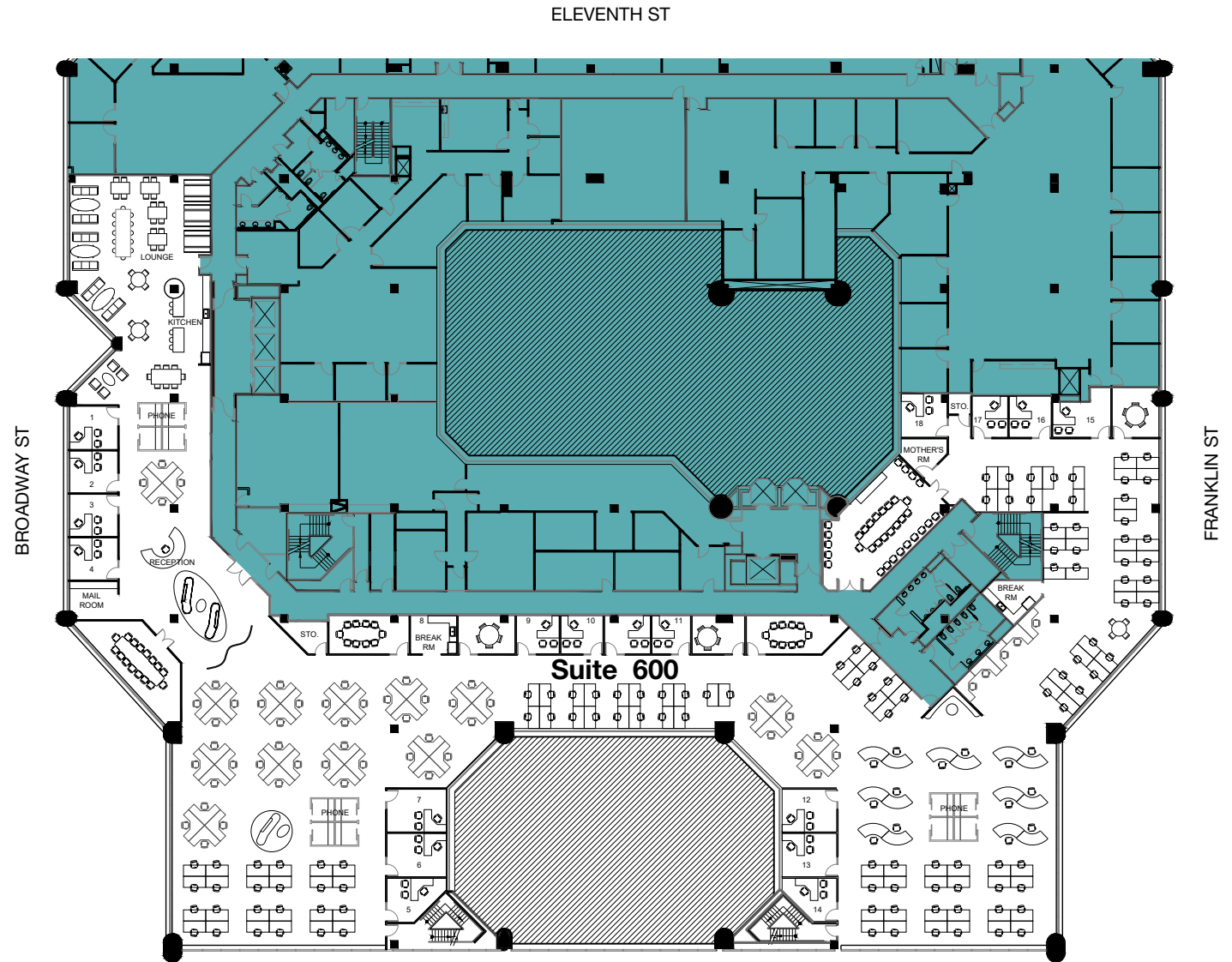
- Full floor opportunity
- San Francisco Bay views
- 13' 6" ceiling heights
- 2 interior atrium views
- 9 conference rooms
- 3 telephone rooms
- 40 private offices
- Open office and lounge space
- 2 sets of restrooms
- 2 sets of elevator banks



# CONCEPTUAL PLAN

## SUITE 600 | 30,772 SF

- San Francisco Bay views
- 13' 6" ceiling heights
- 7 conference rooms
- 18 private offices
- Kitchen
- 2 breakrooms
- 174 workstations
- Expansion opportunities

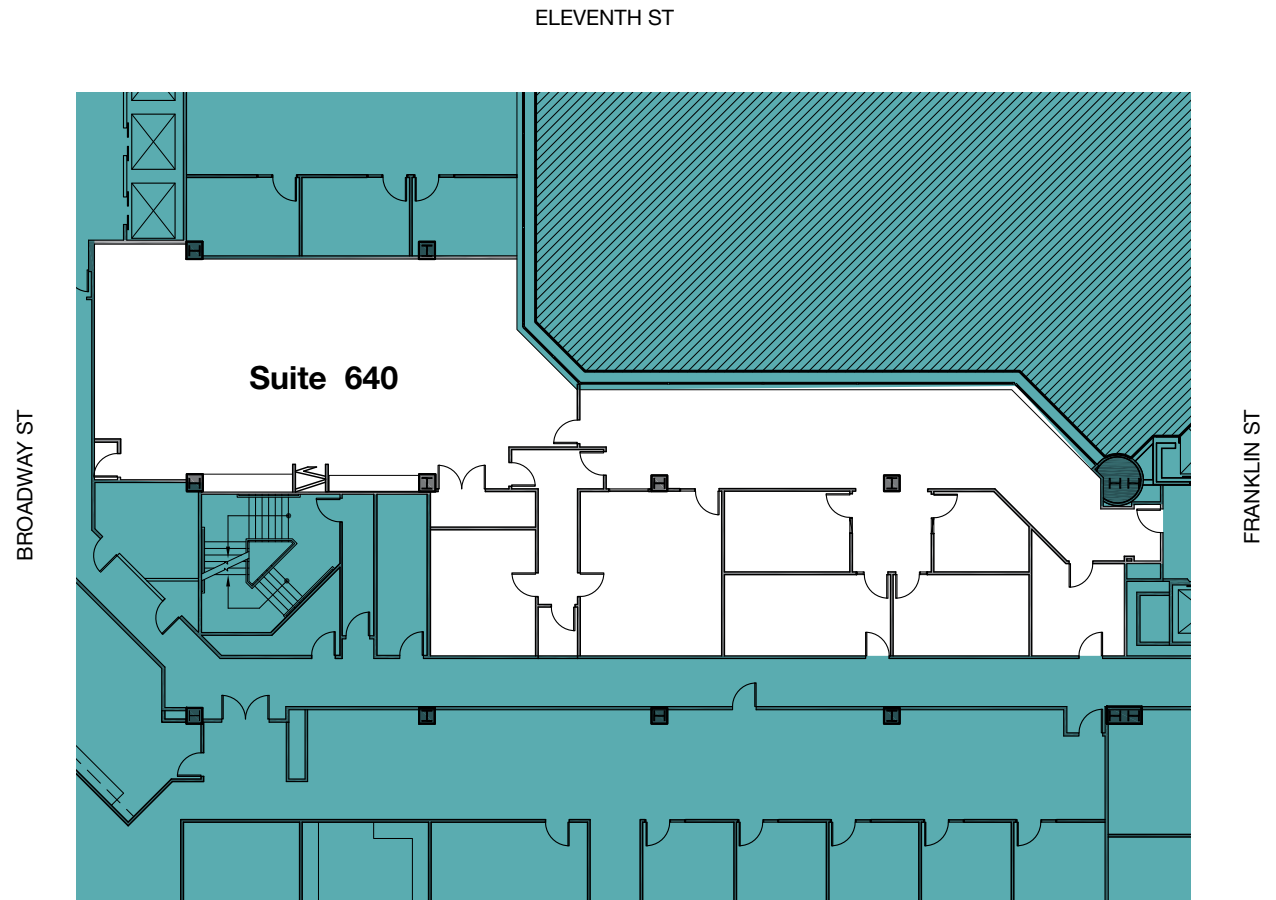




# FLOOR PLAN

## SUITE 640 | 5,434 SF

- Large boardroom
- Kitchen



# FLOOR PLAN

## SUITE 650 | 4,845 SF

- Atrium facing unit
- 10 private offices
- 1 large conference room
- Kitchen/breakroom
- File/storage room







**JOHN DOLBY**

Executive Director

+1 510 267 6027

[john.dolby@cushwake.com](mailto:john.dolby@cushwake.com)

LIC #00870630

**RYAN DALTON**

Director

+1 510 891 5810

[ryan.dalton@cushwake.com](mailto:ryan.dalton@cushwake.com)

LIC #01809447

