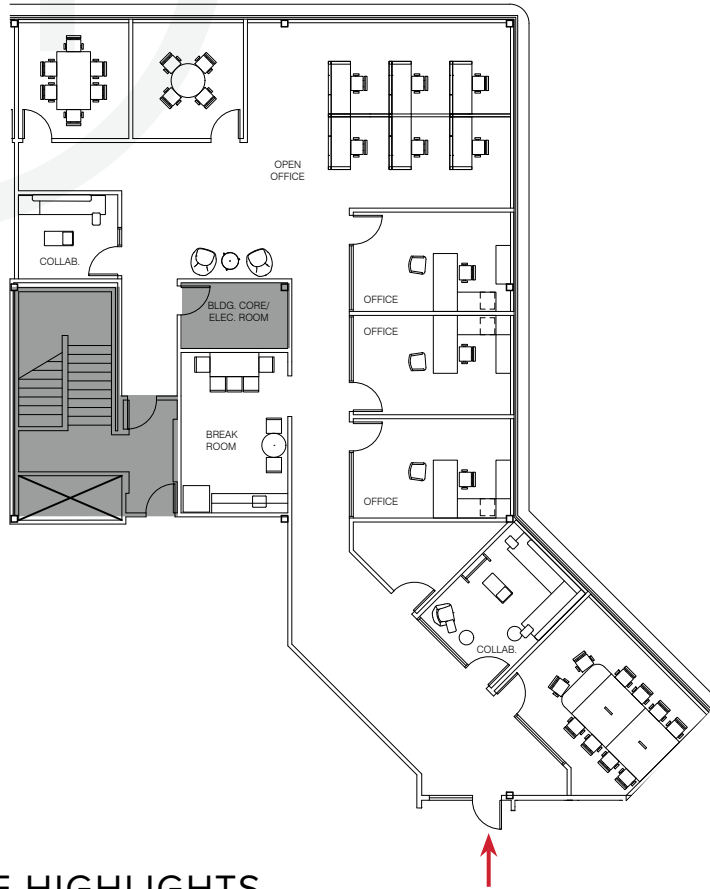


BUILDING 4200 - SUITE 280

~4,203 RSF

*HYPOTHETICAL FURNITURE PLAN



SUITE HIGHLIGHTS

7 Private Offices

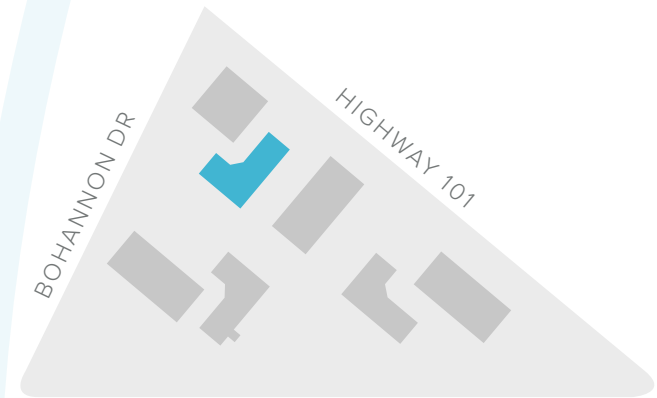
1 Conference Room

IT Server Closet

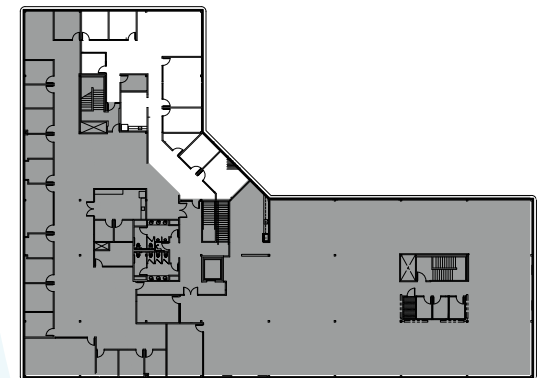
Break Room

TOTAL HEAD COUNT: 12

SITE PLAN:



KEY PLAN:



BEN PAUL | Vice Chairman | +1 650 401 2123 | ben.paul@cushwake.com | LIC #0121087

GARY BOITANO | Managing Director | +1 650 401 2122 | gary.boitano@cushwake.com | LIC #01902693

DAVID HIEBERT | Vice Chairman | +1 650 320 0250 | david.hiebert@cushwake.com | LIC #01189320