

# BUILDING 4400 - SUITE 250 - SPEC LAB SUITE

~14,080 RSF

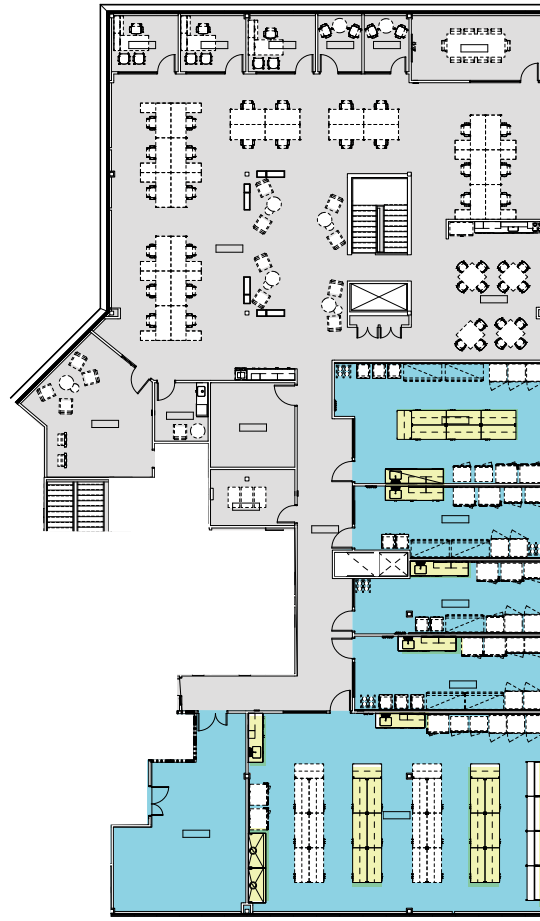
## LAB PORTION

- Single Pass Air
- 21 Lab Benches
- (4) Lab Support Rooms
- (2) 6 ft Fume Hood
- (5) Combination Emergency Shower and Eyewash Stations
- 1 Warehouse/1 Equipment Room
- Shipping and Receiving
- Plug & Play/Benching

## OFFICE PORTION

- 3 Private Offices
- 2 Huddle Rooms
- 1 Conference Room
- 3 Lounge Areas
- 1 Mother/Wellness Room
- 1 Electrical Room
- 1 IT/Server Room
- Break Room with Appliances
- Reception Area

*\*Hypothetical furniture plan*



office lab spec lab

## SITE PLAN:



## KEY PLAN:

