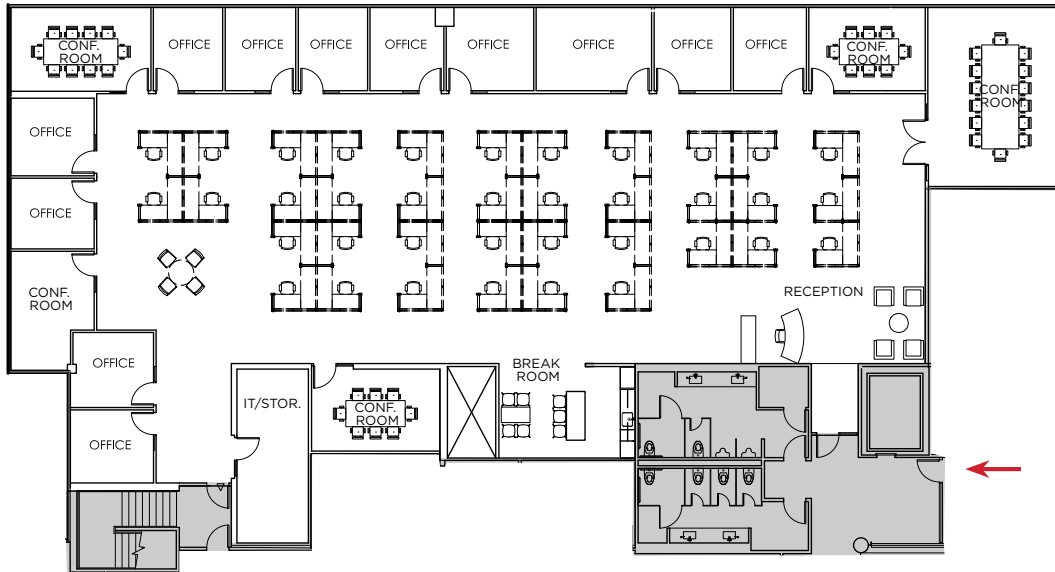


BUILDING 4300 - SUITE 230

~7,589 RSF

*HYPOTHETICAL FURNITURE PLAN



SUITE HIGHLIGHTS

12 Private Offices

4 Conference Rooms

2 Breakout Spaces

IT/STORAGE

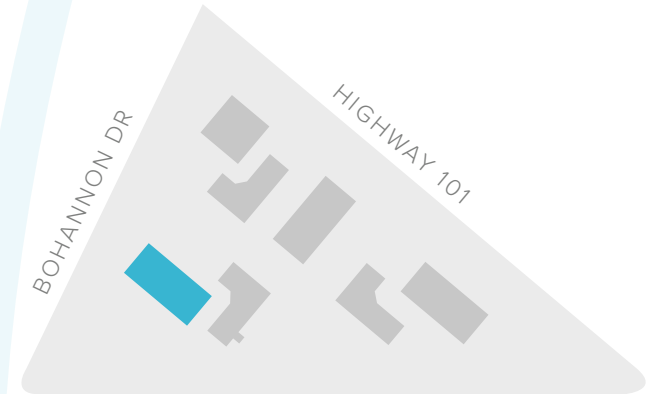
Break Room

Reception

37 Work Stations (6'x6')

TOTAL HEAD COUNT: 52

SITE PLAN:



KEY PLAN:



BEN PAUL | Vice Chairman | +1 650 401 2123 | ben.paul@cushwake.com | LIC #0121087

GARY BOITANO | Managing Director | +1 650 401 2122 | gary.boitano@cushwake.com | LIC #01902693

DAVID HIEBERT | Vice Chairman | +1 650 320 0250 | david.hiebert@cushwake.com | LIC #01189320