

METAFOR



3962 Ince Boulevard

MADE FOR MAKERS

Metafor is a creative powerhouse in Culver City's Hayden Tract community, spanning 9,658 square feet of high-end floor plans. This one-of-a-kind space combines industrial aesthetics with high-functioning design, featuring bowtruss ceilings, polished concrete floors, and glass offices that set the stage for innovation.

A dedicated infinity wall offers flexibility for any creative vision, while the private patio expands your floor plates into the outdoors for an inspiring workspace. Situated directly across from industry leaders like Amazon Studios and Sony Pictures Animation, Metafor places you in the center of Culver City's vibrant creative scene.



AVAILABLE NOW: 9,658 RSF

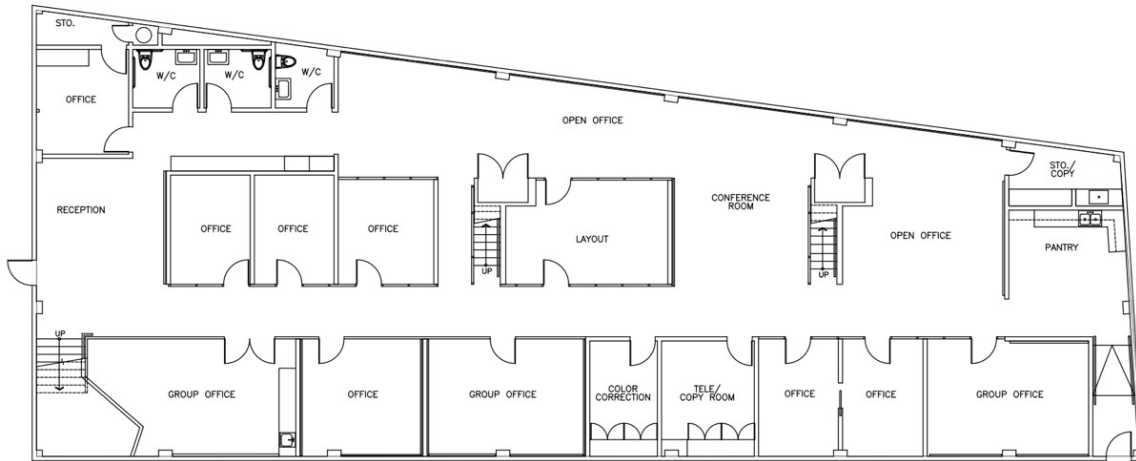


YOUR CREATIVE CANVAS

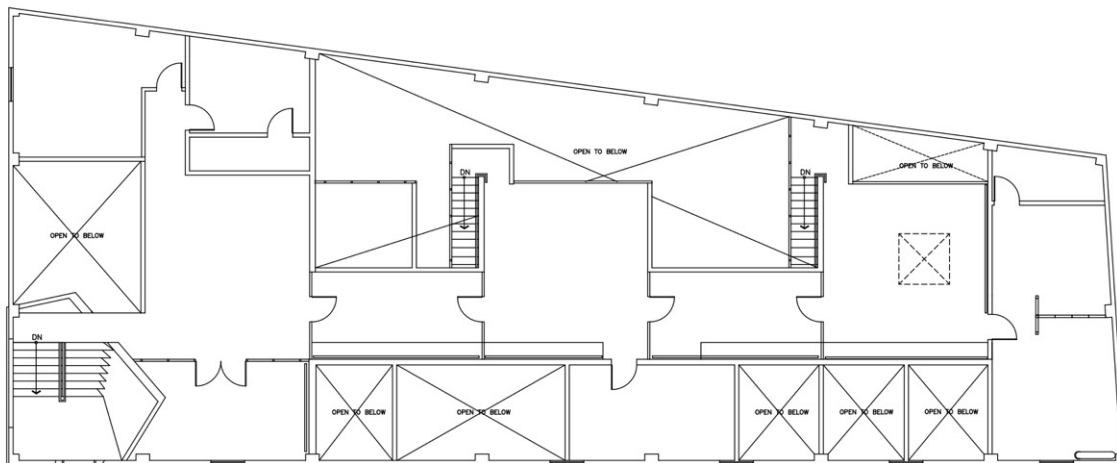
Metafor combines open floor plans, private offices, and modern conference rooms into a workspace designed to bring people together and bold visions to life.

AVAILABLE NOW: 9,658 SF

GROUND FLOOR



SECOND FLOOR



THE FOREFRONT OF LA'S CREATIVE SCENE

Metafor empowers you to thrive in the creative epicenter of Westside LA, surrounded by industry leaders like Amazon, UCLA, and Apple. This dynamic location offers a hub of inspiration, providing endless opportunities to connect and collaborate with top minds in tech, media, and entertainment.



BALLONA CREEK BIKE PATH

METRO EXPO LINE

PARKING RATIO: 3:1,000 RSF (W/VALET)

\$175 UNRESERVED

YOUR LINK TO THE CITY

With easy access to I-405 and I-10, Metafor puts you minutes from West Los Angeles, Santa Monica, and Century City, streamlining your daily commute. The nearby Ballona Creek Bike Path, a favorite among walkers, runners, and bikers, offers a scenic route straight to Santa Monica Bay, connecting you to the best of the Westside.



For More Information, Please Contact:

GABRIEL BROWN

+1 310 435 4344
gabe.brown@jll.com
CA Lic. 01441920

JOSH BERNSTEIN

+1 310 795 5947
josh.bernstein@cushwake.com
CA Lic. 01828093

ALEXA DELAHOKE

+1 626 340 5391
alexa.delahooke@cushwake.com
CA Lic. 02091695

©2025 Cushman & Wakefield. All rights reserved. The information contained in this communication is strictly confidential. This information has been obtained from sources believed to be reliable but has not been verified. NO WARRANTY OR REPRESENTATION, EXPRESS OR IMPLIED, IS MADE AS TO THE CONDITION OF THE PROPERTY (OR PROPERTIES) REFERENCED HEREIN OR AS TO THE ACCURACY OR COMPLETENESS OF THE INFORMATION CONTAINED HEREIN, AND SAME IS SUBMITTED SUBJECT TO ERRORS, OMISSIONS, CHANGE OF PRICE, RENTAL OR OTHER CONDITIONS, WITHDRAWAL WITHOUT NOTICE, AND TO ANY SPECIAL LISTING CONDITIONS IMPOSED BY THE PROPERTY OWNER(S). ANY PROJECTIONS, OPINIONS OR ESTIMATES ARE SUBJECT TO UNCERTAINTY AND DO NOT SIGNIFY CURRENT OR FUTURE PROPERTY PERFORMANCE. COE-PM-West-06.9.2025

