

MASIN BLOCK

— SEATTLE, WA —

220-240 Second Ave S

CURRENT AVAILABILITIES



 CUSHMAN &
WAKEFIELD

rubicon
point
partners

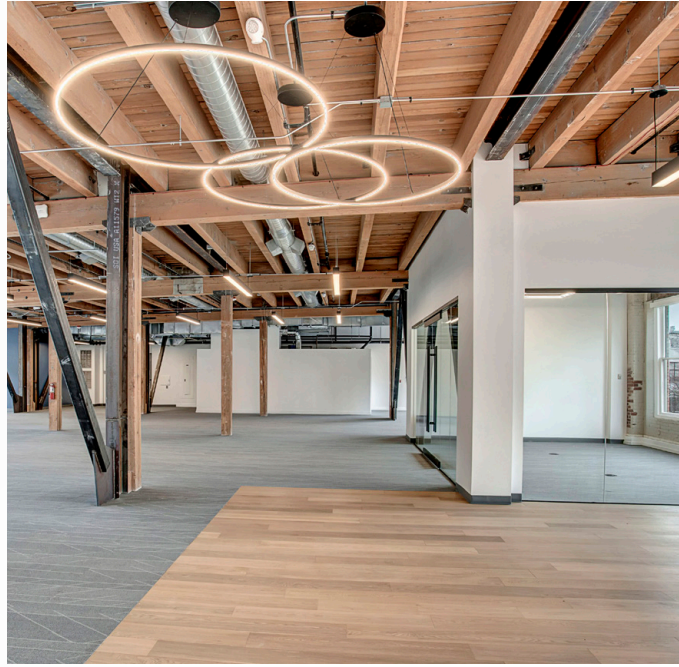
AVAILABILITIES

220 SECOND AVE S

▶ Suite 400	8,432 SF	\$22/SF NNN	View Floor Plan
▶ Suite 300	8,308 SF	\$22/SF NNN	View Floor Plan
▶ Suite 200	8,236 SF	\$22/SF NNN	View Floor Plan
Suite 100	8,624 SF	\$22/SF NNN	View Floor Plan
Suite LL	1,509 SF	\$22/SF NNN	View Floor Plan
Full Building	35,109 SF		

240 SECOND AVE S

▶ Suite 500	6,611 SF	\$22/SF NNN	View Floor Plan
▶ Suite 400	6,611 SF	\$22/SF NNN	View Floor Plan
▶ Suite 300	7,240 SF	\$22/SF NNN	View Floor Plan
▶ Suite 201	7,279 SF	\$22/SF NNN	View Floor Plan



220 SECOND AVE S

SUITE 400 | 8,432 SF | TEST FIT














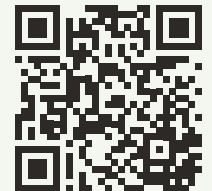
VIEW VIRTUAL TOUR

MASIN BLOCK

— SEATTLE, WA —

220-240 Second Ave S

	
 Open Office	52
Total Work Seats	52
	
 Conference	10
 Open Collaboration	10
Total Collab Seats	20
	
 Break Room	1
 Conference	1
 Open Collaboration	3
 Reception Guest Seating	1
 IDF Room	1



MASINBLOCKSEATTLE.COM

BRANDON BURMEISTER

Senior Director

+1 206 215 9702

brandon.burmeister@cushwake.com

LEAH MASSON

Senior Director

+1 206 215 9803

leah.masson@cushwake.com



**CUSHMAN &
WAKEFIELD**

rubicon
point
partners

220 SECOND AVE S

SUITE 300 | 8,308 SF

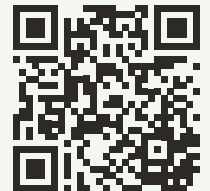
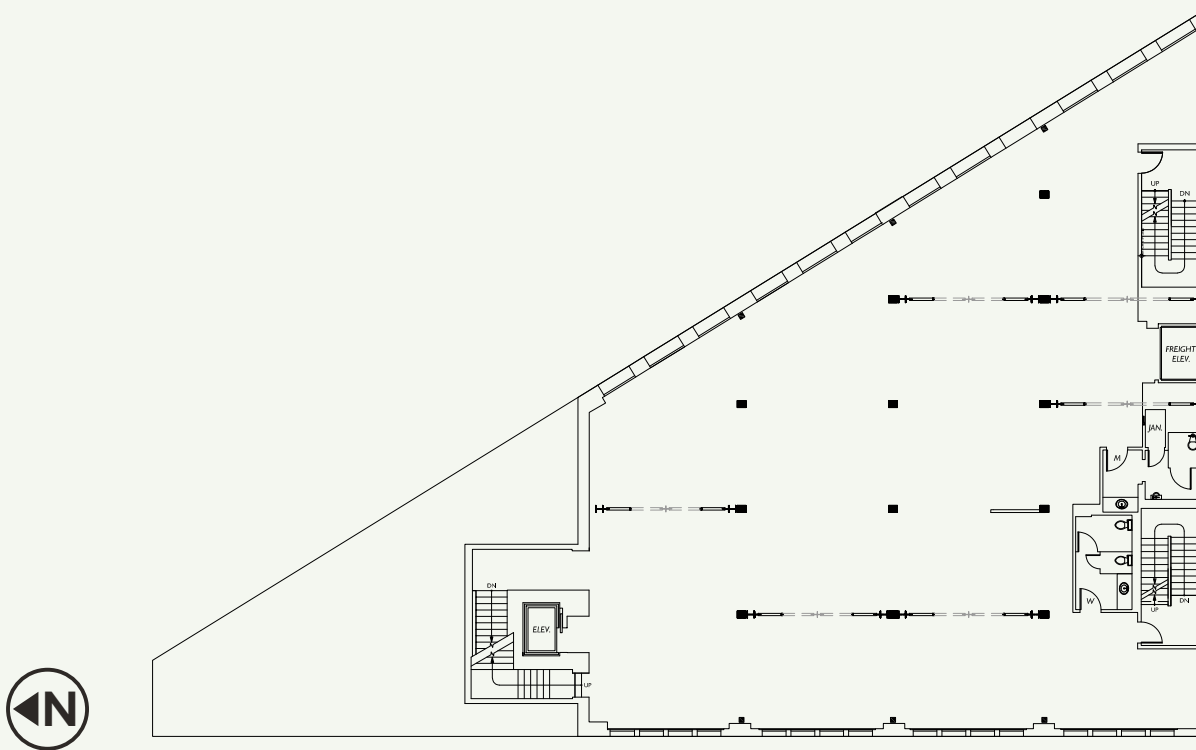


VIEW VIRTUAL TOUR

MASIN BLOCK

— SEATTLE, WA —

220-240 Second Ave S



MASINBLOCKSEATTLE.COM

BRANDON BURMEISTER

Senior Director
+1 206 215 9702
brandon.burmeister@cushwake.com

LEAH MASSON

Senior Director
+1 206 215 9803
leah.masson@cushwake.com



rubicon
point
partners

220 SECOND AVE S

SUITE 200 | 8,236 SF

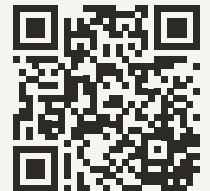
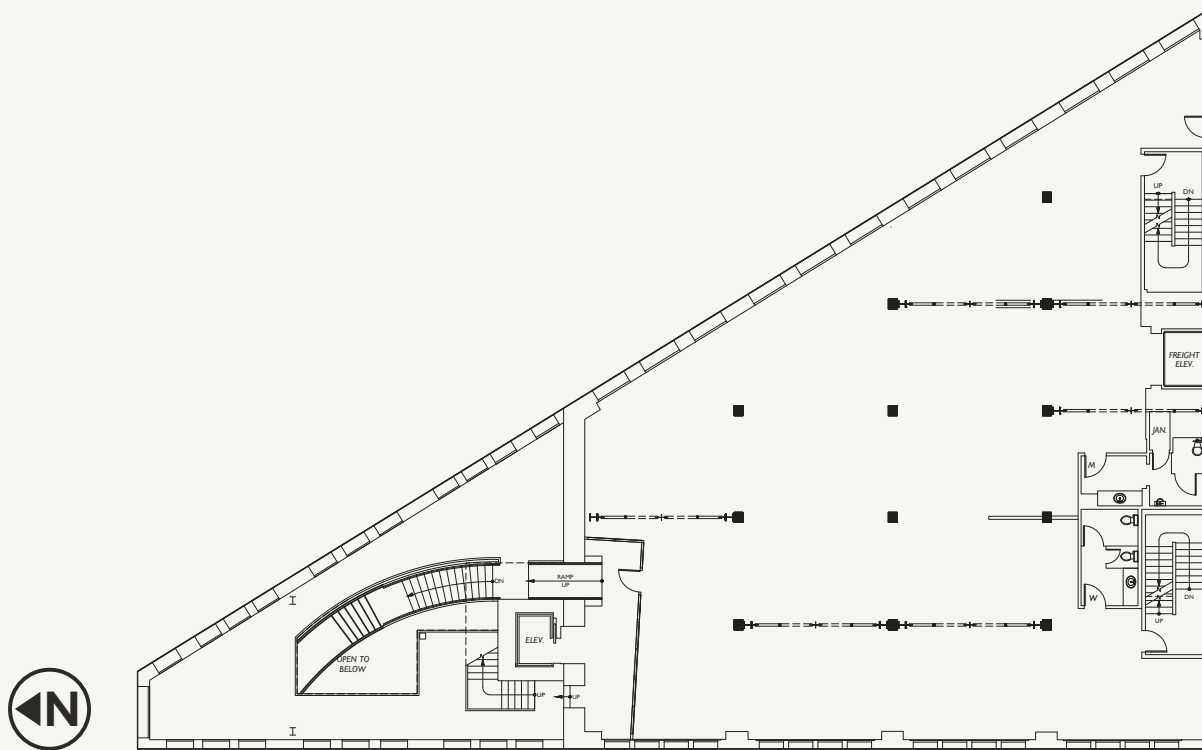


VIEW VIRTUAL TOUR

MASIN BLOCK

— SEATTLE, WA —

220-240 Second Ave S



MASINBLOCKSEATTLE.COM

BRANDON BURMEISTER

Senior Director

+1 206 215 9702

brandon.burmeister@cushwake.com

LEAH MASSON

Senior Director

+1 206 215 9803

leah.masson@cushwake.com



**CUSHMAN &
WAKEFIELD**

rubicon
point
partners

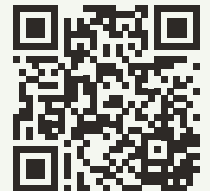
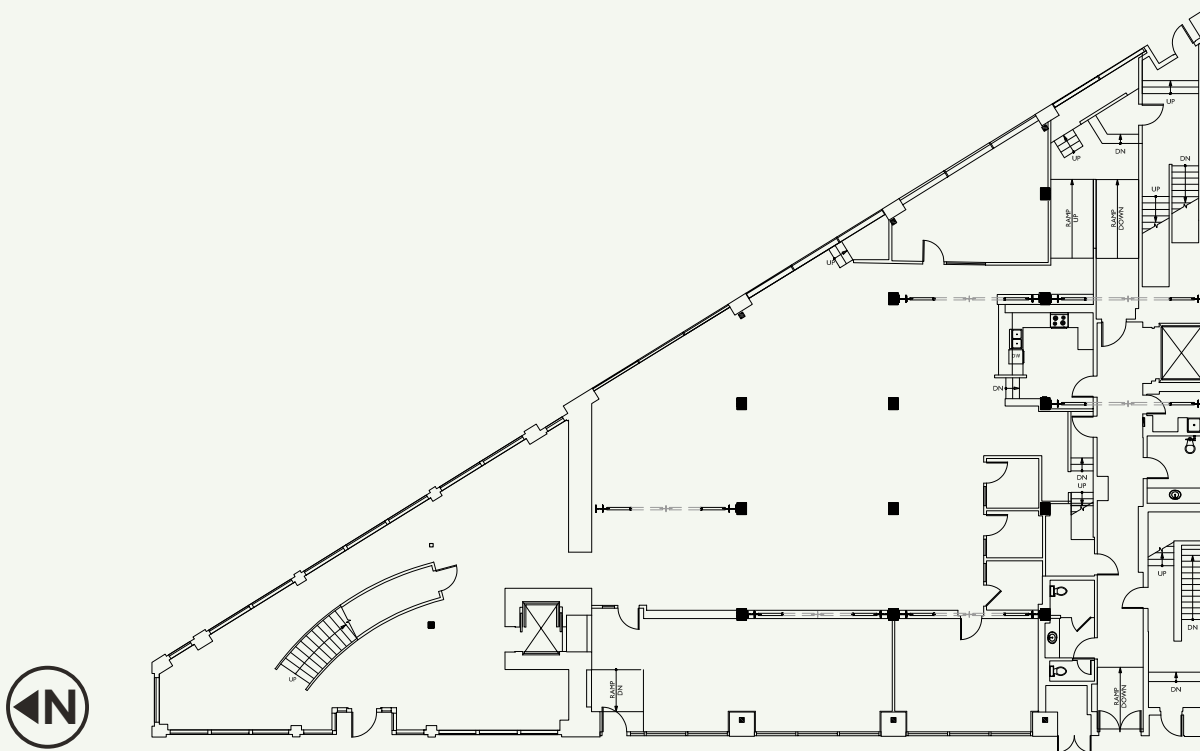
220 SECOND AVE S

SUITE 100 | 8,624 SF

MASIN BLOCK

— SEATTLE, WA —

220-240 Second Ave S



MASINBLOCKSEATTLE.COM

BRANDON BURMEISTER

Senior Director

+1 206 215 9702

brandon.burmeister@cushwake.com

LEAH MASSON

Senior Director

+1 206 215 9803

leah.masson@cushwake.com



rubicon
point
partners

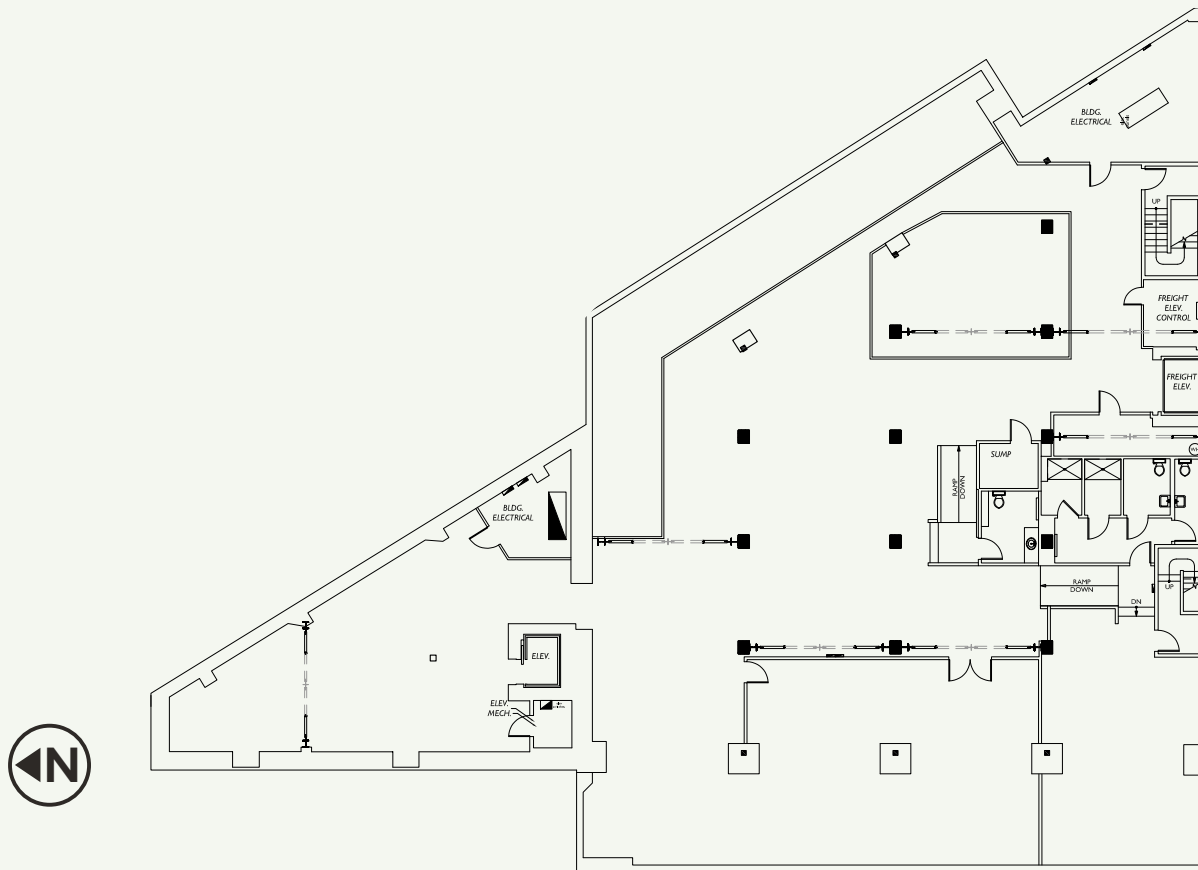
220 SECOND AVE S

SUITE LL | 1,509 SF

MASIN BLOCK

— SEATTLE, WA —

220-240 Second Ave S



MASINBLOCKSEATTLE.COM

BRANDON BURMEISTER

Senior Director

+1 206 215 9702

brandon.burmeister@cushwake.com

LEAH MASSON

Senior Director

+1 206 215 9803

leah.masson@cushwake.com



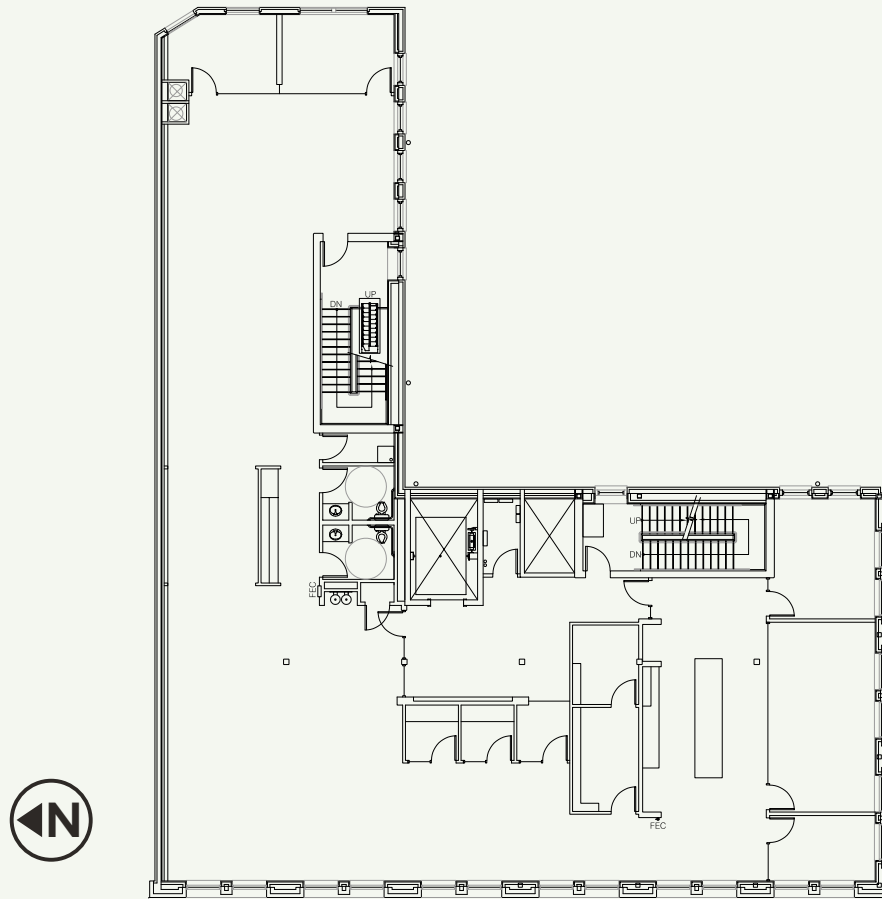
rubicon
point
partners

240 SECOND AVE S

SUITE 500 | 6,611 SF



VIEW VIRTUAL TOUR



MASIN BLOCK

— SEATTLE, WA —

220-240 Second Ave S



MASINBLOCKSEATTLE.COM

BRANDON BURMEISTER

Senior Director

+1 206 215 9702

brandon.burmeister@cushwake.com

LEAH MASSON

Senior Director

+1 206 215 9803

leah.masson@cushwake.com



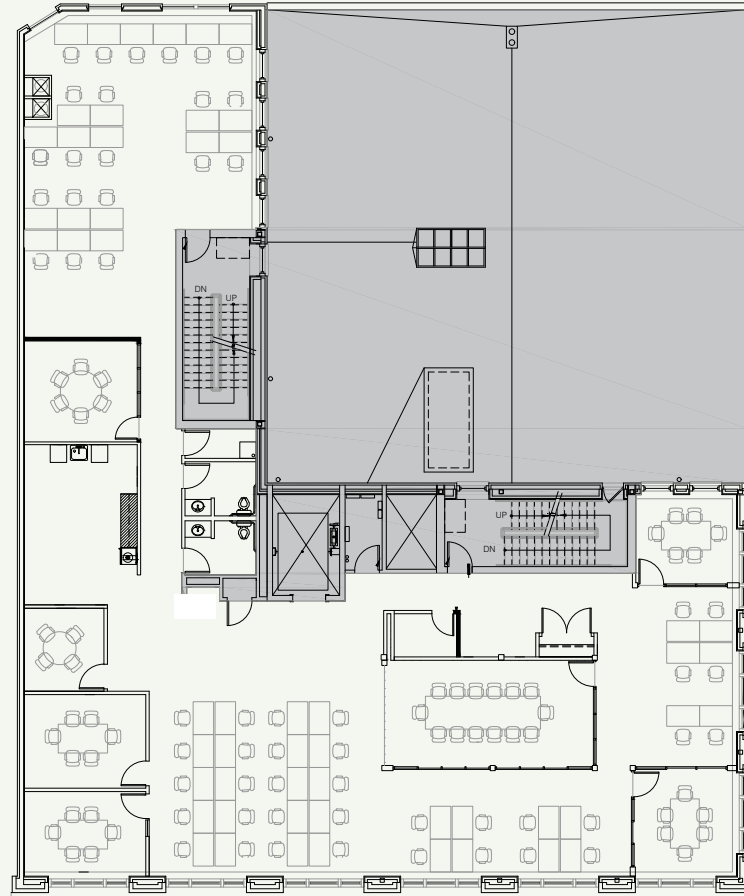
rubicon
point
partners

240 SECOND AVE S

SUITE 400 | 6,611 SF



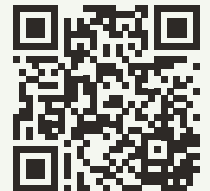
VIEW VIRTUAL TOUR



MASIN BLOCK

— SEATTLE, WA —

220-240 Second Ave S



MASINBLOCKSEATTLE.COM

BRANDON BURMEISTER

Senior Director

+1 206 215 9702

brandon.burmeister@cushwake.com

LEAH MASSON

Senior Director

+1 206 215 9803

leah.masson@cushwake.com



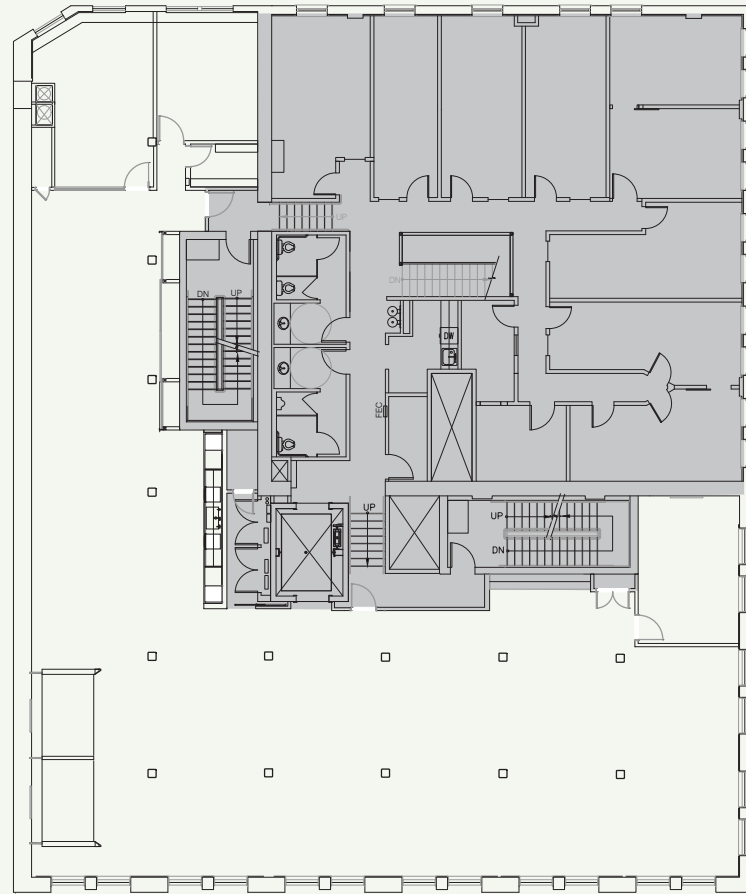
rubicon
point
partners

240 SECOND AVE S

SUITE 300 | 7,240 SF



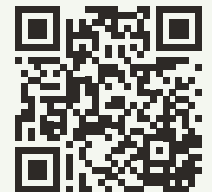
VIEW VIRTUAL TOUR



MASIN BLOCK

— SEATTLE, WA —

220-240 Second Ave S



MASINBLOCKSEATTLE.COM

BRANDON BURMEISTER

Senior Director

+1 206 215 9702

brandon.burmeister@cushwake.com

LEAH MASSON

Senior Director

+1 206 215 9803

leah.masson@cushwake.com



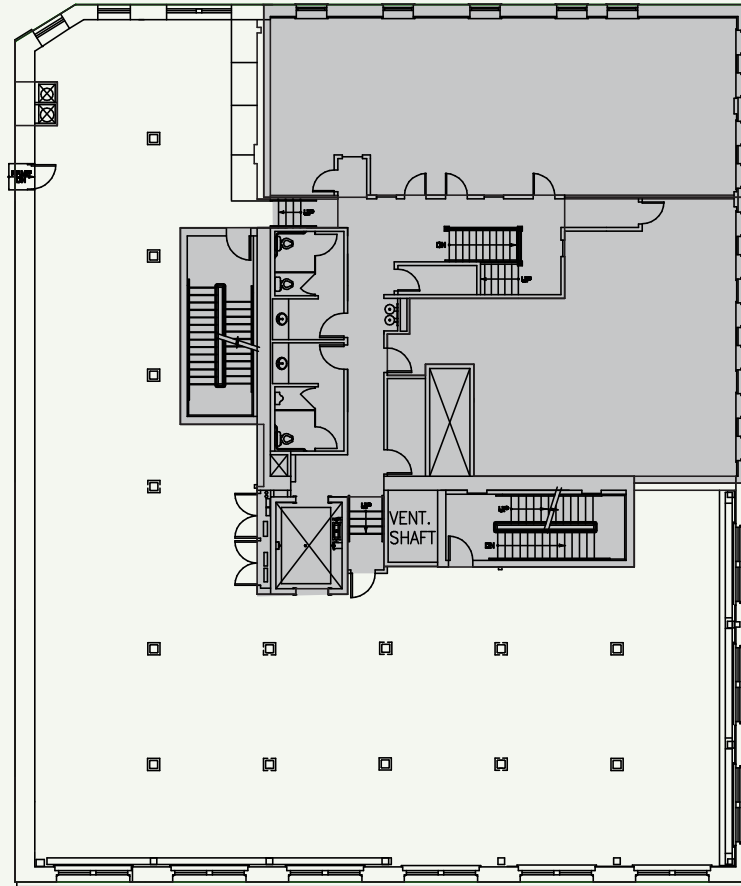
rubicon
point
partners

240 SECOND AVE S

SUITE 201 | 7,279 SF



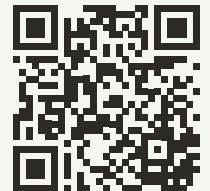
VIEW VIRTUAL TOUR



MASIN BLOCK

— SEATTLE, WA —

220-240 Second Ave S



MASINBLOCKSEATTLE.COM

BRANDON BURMEISTER

Senior Director

+1 206 215 9702

brandon.burmeister@cushwake.com

LEAH MASSON

Senior Director

+1 206 215 9803

leah.masson@cushwake.com



**CUSHMAN &
WAKEFIELD**

rubicon
point
partners