

Wonderful logistics center™

5104 EXPRESS AVENUE, SHAFTER, CA 93263

FOR LEASE / ±1,088,047 Sq. Ft.
NOW COMPLETE



For more information, please contact:

Phil Lombardo

+1 909 942 4678

phil.lombardo@cushwake.com

Lic. #00892477

Andrew Starnes

+1 909 942 4667

andrew.starnes@cushwake.com

Lic. #01799801

Cruise Adams

+1 909-942 4641

cruise.adams@cushwake.com

Lic. #02075368

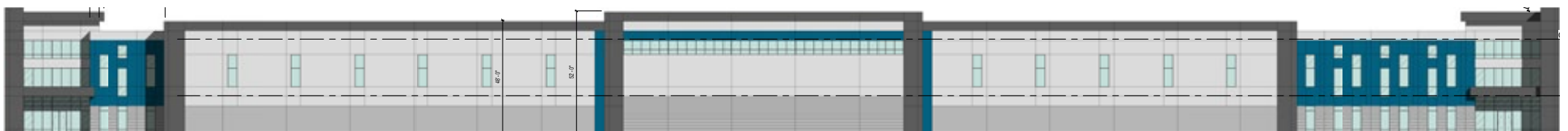


Wonderfulreal estate
DEVELOPMENT™

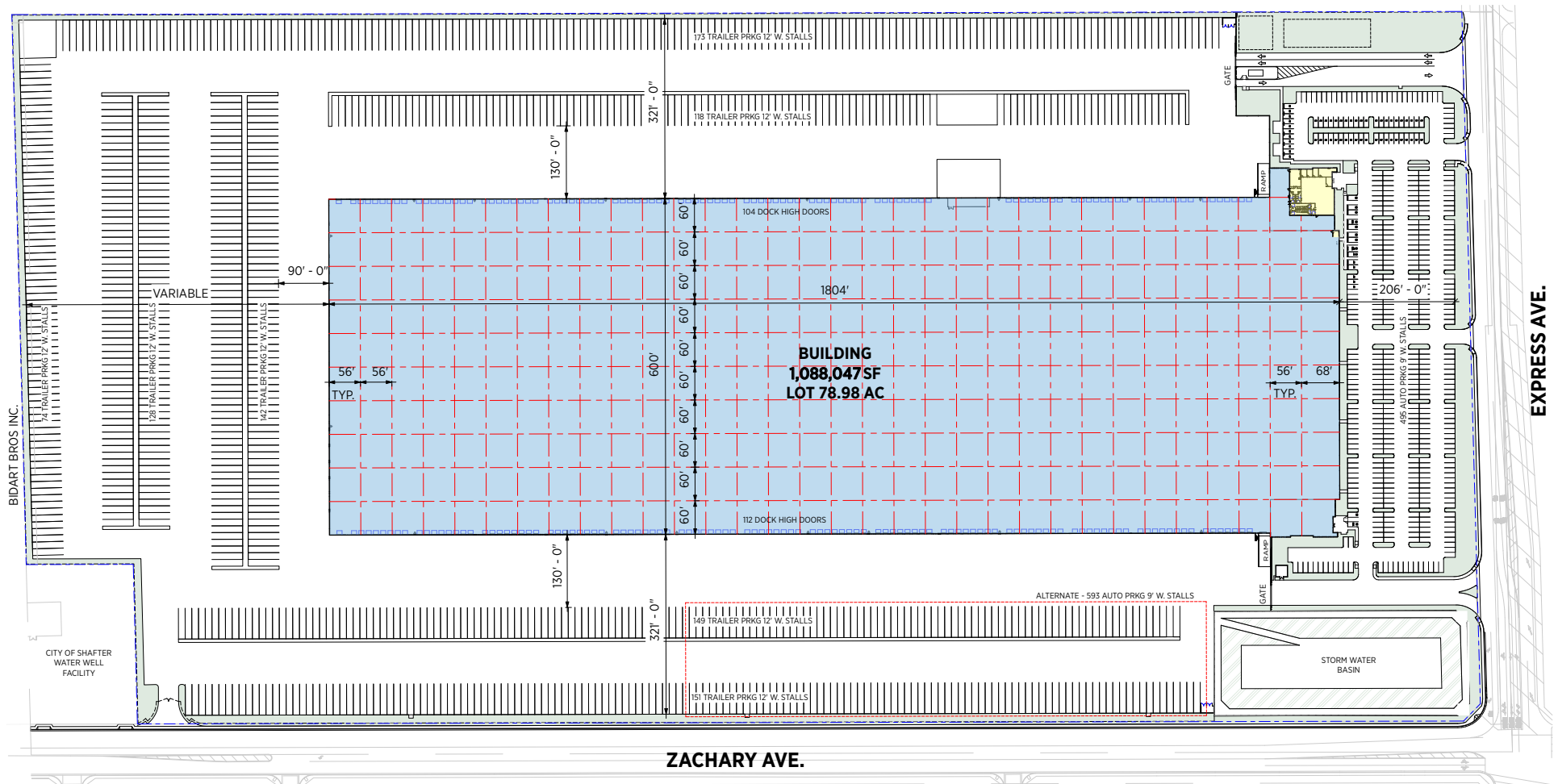
Building Specifications

Location:	<ul style="list-style-type: none"> ■ Shafter / Bakersfield, CA 	Loading Doors:	<ul style="list-style-type: none"> ■ 216 Dock High Doors (86 Doors w/ 40k lb Levelers) ■ 3 (12'w x 15'h) Grade Level Doors
Address:	<ul style="list-style-type: none"> ■ 5104 Express Avenue, Shafter, CA 93263 	Total Parking:	<ul style="list-style-type: none"> ■ 495 Auto Stalls ■ 935 Trailer Stalls
Building Size:	<ul style="list-style-type: none"> ■ ±1,088,047 Sq. Ft. 	Fire Suppression:	<ul style="list-style-type: none"> ■ ESFR
Site:	<ul style="list-style-type: none"> ■ ±74.10 Acres Net 	Truck Court:	<ul style="list-style-type: none"> ■ 321' on each side and 552' rear court; 7" Thick ■ 3,500 PSI Concrete ■ 100% Secure Truck Yards with 3 Gated Entrances
Construction:	<ul style="list-style-type: none"> ■ Concrete Tilt-up 	Floors:	<ul style="list-style-type: none"> ■ 7" Thick, 4,000 PSI; Flatness/Levelness - OAFF- 50 / OAFL-35 MLFF-35 / MLFL-25
Office:	<ul style="list-style-type: none"> ■ 6,200 Sq. Ft. Spec Office 	Warehouse Lighting:	<ul style="list-style-type: none"> ■ To Suit
Clear Height:	<ul style="list-style-type: none"> ■ 40' Clear to Underside of Joists/Girders ■ 37'-4" Clear in Loading Bays 	Electric:	<ul style="list-style-type: none"> ■ Guaranteed In-place 4,000 amp UGPS/4,000 amp main service panel ■ Expandable to 8,000 amps Guaranteed
Column Spacing:	<ul style="list-style-type: none"> ■ 60' x 56' Loading Bays ■ 60' x 56' Interior Bays 	Jurisdiction	<ul style="list-style-type: none"> ■ Kern County, City of Shafter

Elevation



Site Plan

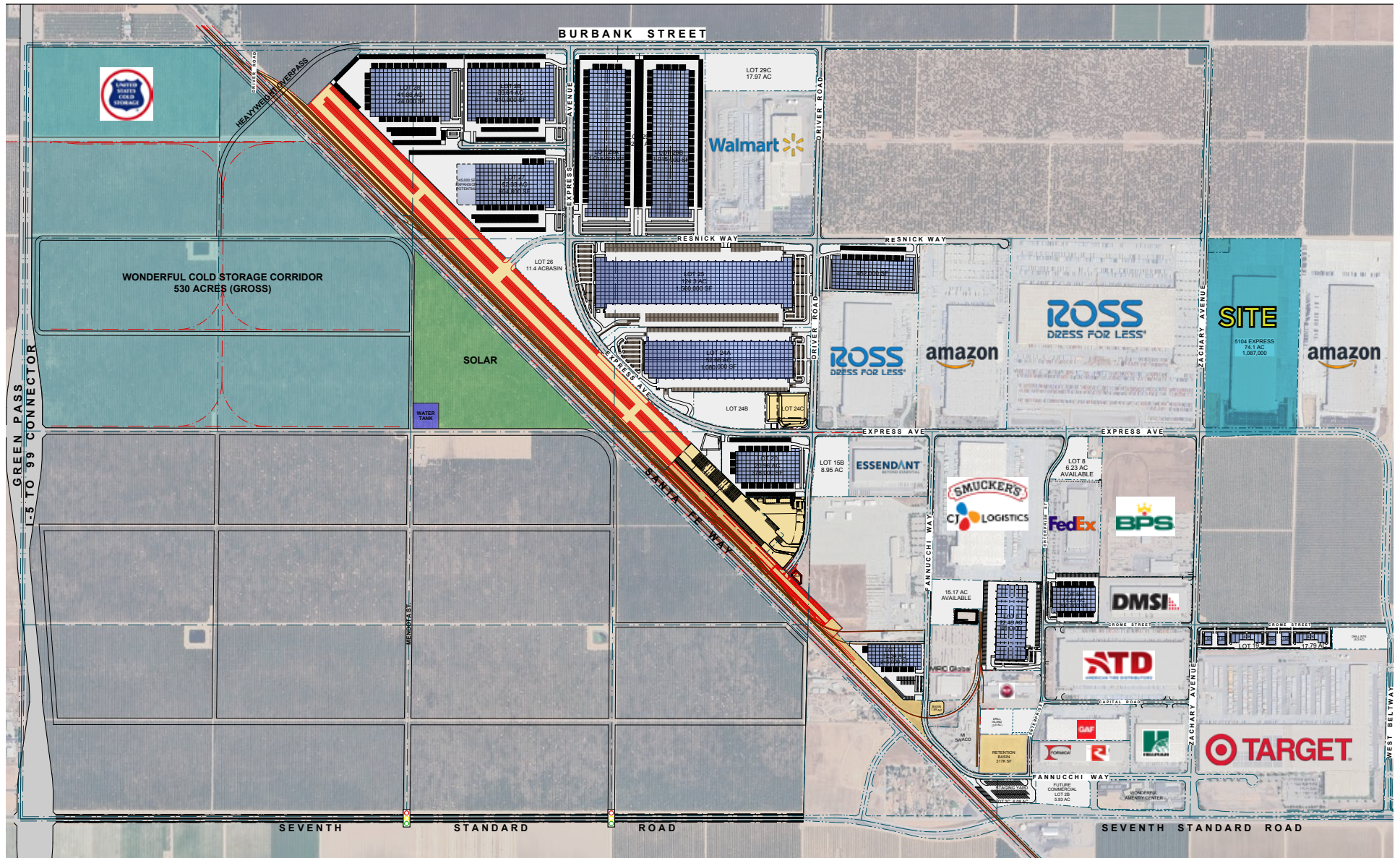


Wonderful logistics center™

5104 EXPRESS AVENUE, SHAFTER, CA 93263

FOR LEASE / ±1,088,047 SQ. FT.
NOW COMPLETE

Location





Transportation

Less than 1-day truck service to >60MM customers, 7 states and 3 major ports. 2-day truck service to 11 states.



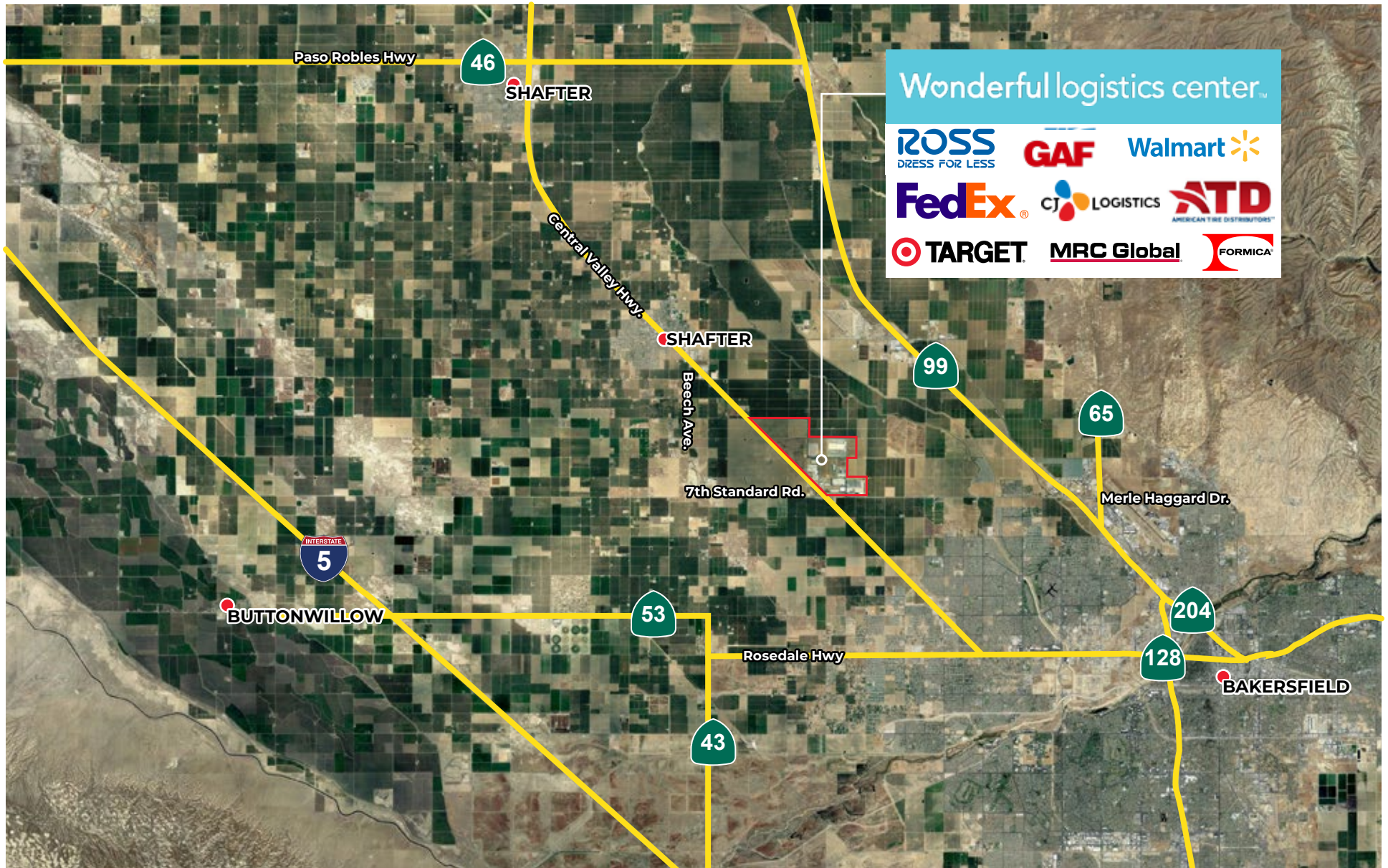
About the County

Kern County's transportation, logistics and advanced manufacturing industry has grown significantly in the past decade, thanks to companies like **Frito-Lay, Amazon, Target, Ross, American Tire Distributors, IKEA** and **Famous Footwear**. The industry employs over 14,000 people in key segments of distribution across 50 different distribution centers. Kern County's location provides for an easy, one-day turnaround trip to California's largest population concentrations, which include San Diego, Los Angeles, Sacramento and the Bay Area, as well as Las Vegas.

Wonderful logistics center™

5104 EXPRESS AVENUE, SHAFTER, CA 93263

FOR LEASE / ±1,088,047 SQ. FT.
NOW COMPLETE



Wonderful logistics center™

5104 EXPRESS AVENUE, SHAFTER, CA 93263

FOR LEASE / ±1,088,047 Sq. Ft.
NOW COMPLETE

For more information, please contact:

Phil Lombardo

+1 909 942 4678

phil.lombardo@cushwake.com

Lic. #00892477

Andrew Starnes

+1 909 942 4667

andrew.starnes@cushwake.com

Lic. #01799801

Cruise Adams

+1 909-942 4641

cruise.adams@cushwake.com

Lic. #02075368

Cushman & Wakefield of California | 901 Via Piemonte, Suite 200 | Ontario, CA 91764 | cushmanwakefield.com



**CUSHMAN &
WAKEFIELD**

Wonderfulrealestate
DEVELOPMENT™

CUSHMAN & WAKEFIELD OF CALIFORNIA + WONDERFUL REAL ESTATE DEVELOPMENT

©2025 Cushman & Wakefield. All rights reserved. The information contained in this communication is strictly confidential. This information has been obtained from sources believed to be reliable but has not been verified. NO WARRANTY OR REPRESENTATION, EXPRESS OR IMPLIED, IS MADE AS TO THE CONDITION OF THE PROPERTY (OR PROPERTIES) REFERENCED HEREIN OR AS TO THE ACCURACY OR COMPLETENESS OF THE INFORMATION CONTAINED HEREIN, AND SAME IS SUBMITTED SUBJECT TO ERRORS, OMISSIONS, CHANGE OF PRICE, RENTAL OR OTHER CONDITIONS, WITHDRAWAL WITHOUT NOTICE, AND TO ANY SPECIAL LISTING CONDITIONS IMPOSED BY THE PROPERTY OWNER(S). ANY PROJECTIONS, OPINIONS OR ESTIMATES ARE SUBJECT TO UNCERTAINTY AND DO NOT SIGNIFY CURRENT OR FUTURE PROPERTY PERFORMANCE. COE-PM-WEST-04/08/2025