

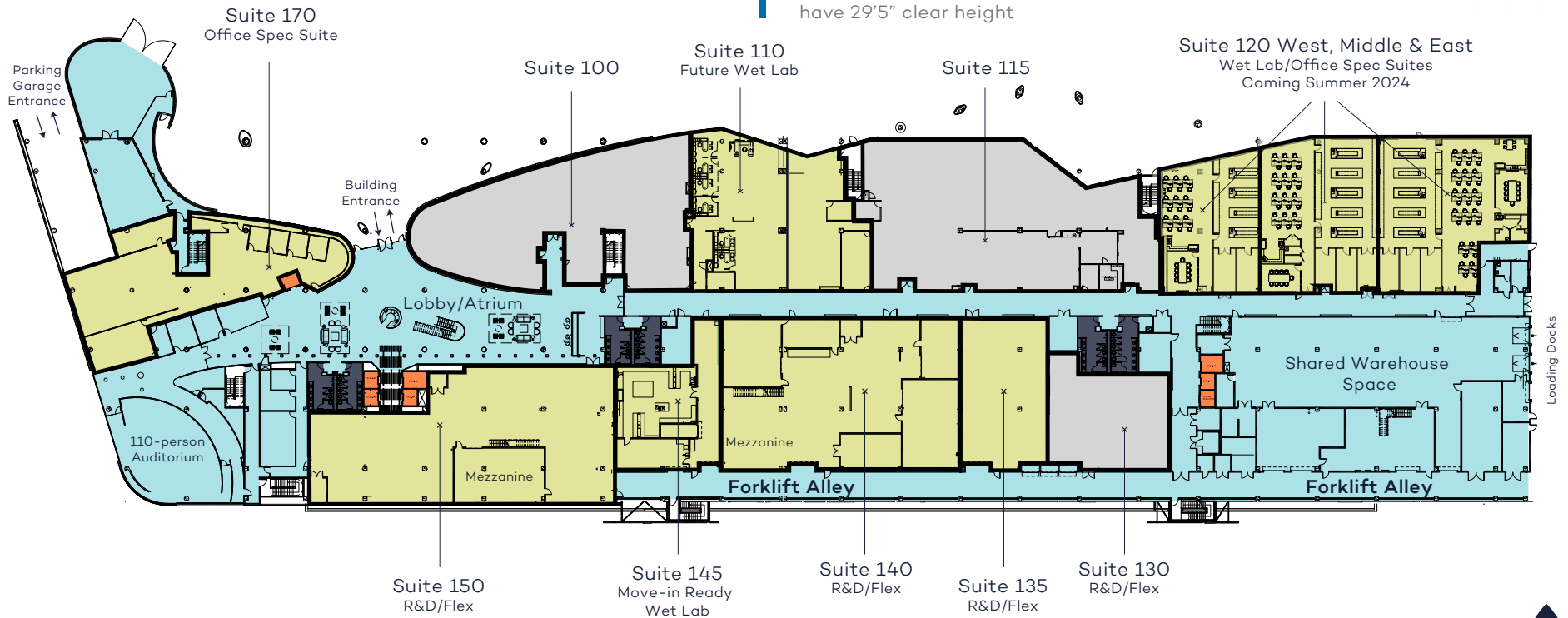
# Level 1

- + ±113,757 RSF
- + 110-person lecture-sized auditorium
- + Lobby and atrium
- + Lab suites
- + R&D flex suites
- + Garage access
- + Tenant storage/warehousing

## AVAILABLE SUITES

- Suite 110 | 8,120 RSF
- Suite 120 West | 4,058 RSF
- Suite 120 Middle | 5,819 RSF
- Suite 120 East | 6,850 RSF
- Suite 135 | 4,420 RSF
- Suite 140 | 15,260 RSF
- Suite 145 | 4,022 RSF
- Suite 150 | 13,642 RSF
- Suite 170 | 8,341 RSF

\*Suites 135, 140, 145, & 150 are contiguous to 37,344 SF and have 29'5" clear height



### LEGEND

- Available
- Common Areas
- Elevators
- Leased
- Restrooms



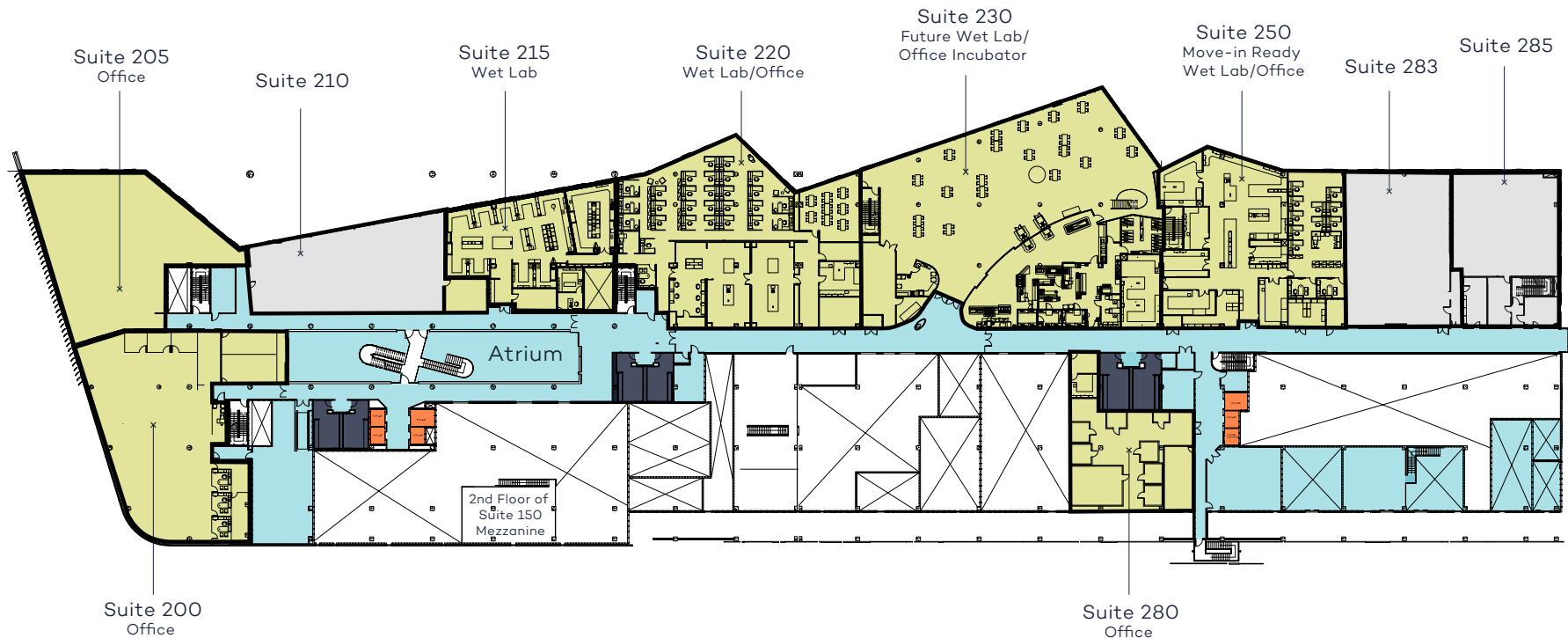
# Level 2

- + ±89,872 RSF
- + Wet labs
- + Office space

## AVAILABLE SUITES

- Suite 200 | 9,767 RSF
- Suite 205 | 7,351 RSF
- Suite 215 | 5,800 RSF
- Suite 220 | 11,732 RSF
- Suite 230 | 21,301 RSF
- Suite 250 | 7,406 RSF
- Suite 280 | 4,470 RSF

\*Suites 220, 230, & 250 are contiguous to 40,439 SF



### LEGEND

- Available
- Common Areas
- Elevators
- Leased
- Restrooms



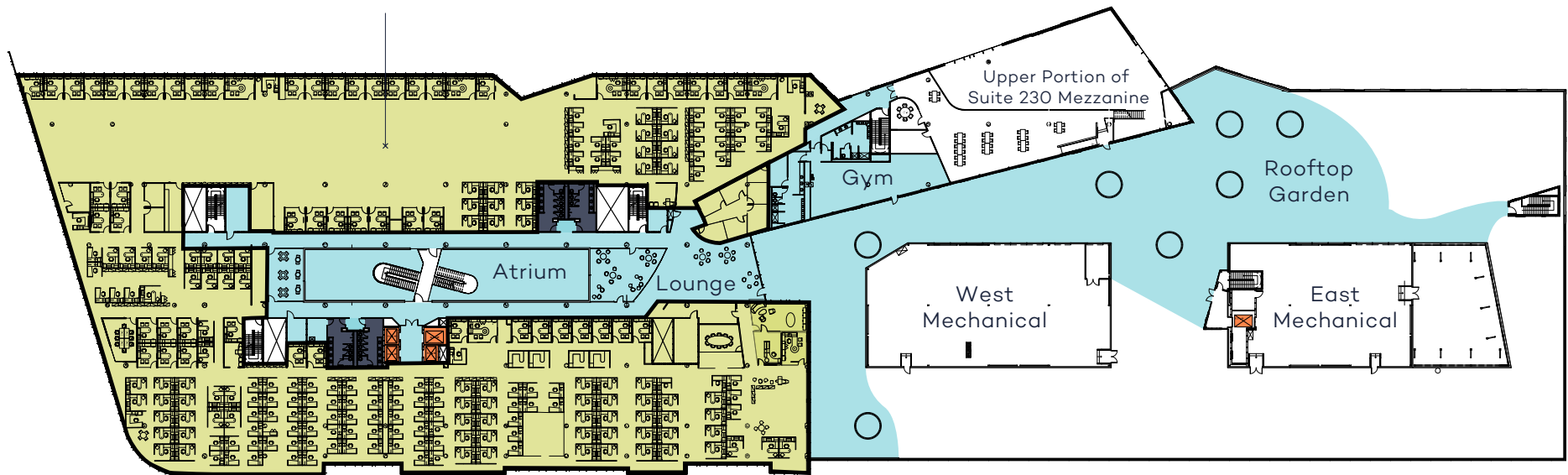
# Level 3

- + ±70,443 RSF
- + Rooftop park access
- + Fitness center
- + Creative office suites

## AVAILABLE SUITES

Suite 300 | 10,000-70,443 RSF

Suite 300  
Move-in Ready Office  
Suite with 352 cubicles



### LEGEND

- Available
- Common Areas
- Elevators
- Leased
- Restrooms

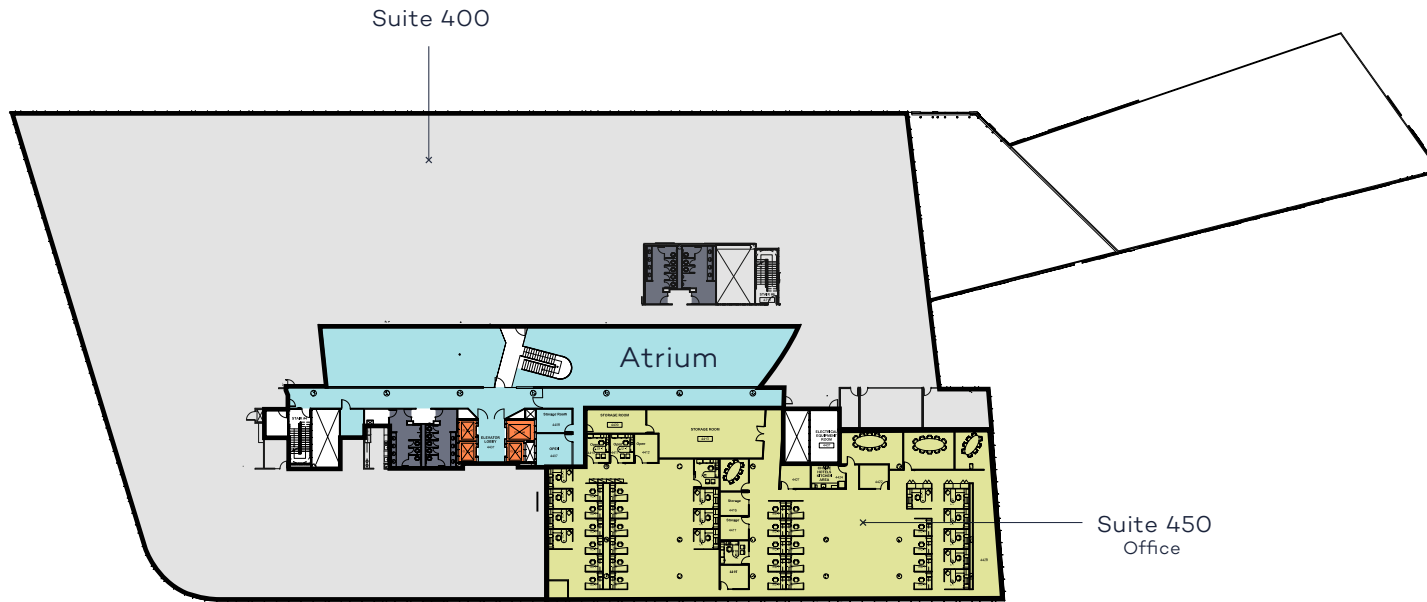


# Level 4

- + ±78,209 RSF
- + Creative office space

## AVAILABLE SUITES

Suite 450 | 18,664 RSF (Divisible to 5,000 RSF)



### LEGEND

- Available
- Common Areas
- Elevators
- Leased
- Restrooms

